

T. 2, N. R. 34, E. W. No.

PLAT OF Road No. 750

CAVUSE
R.
No. 750

1 NC

2 NC

3 NC

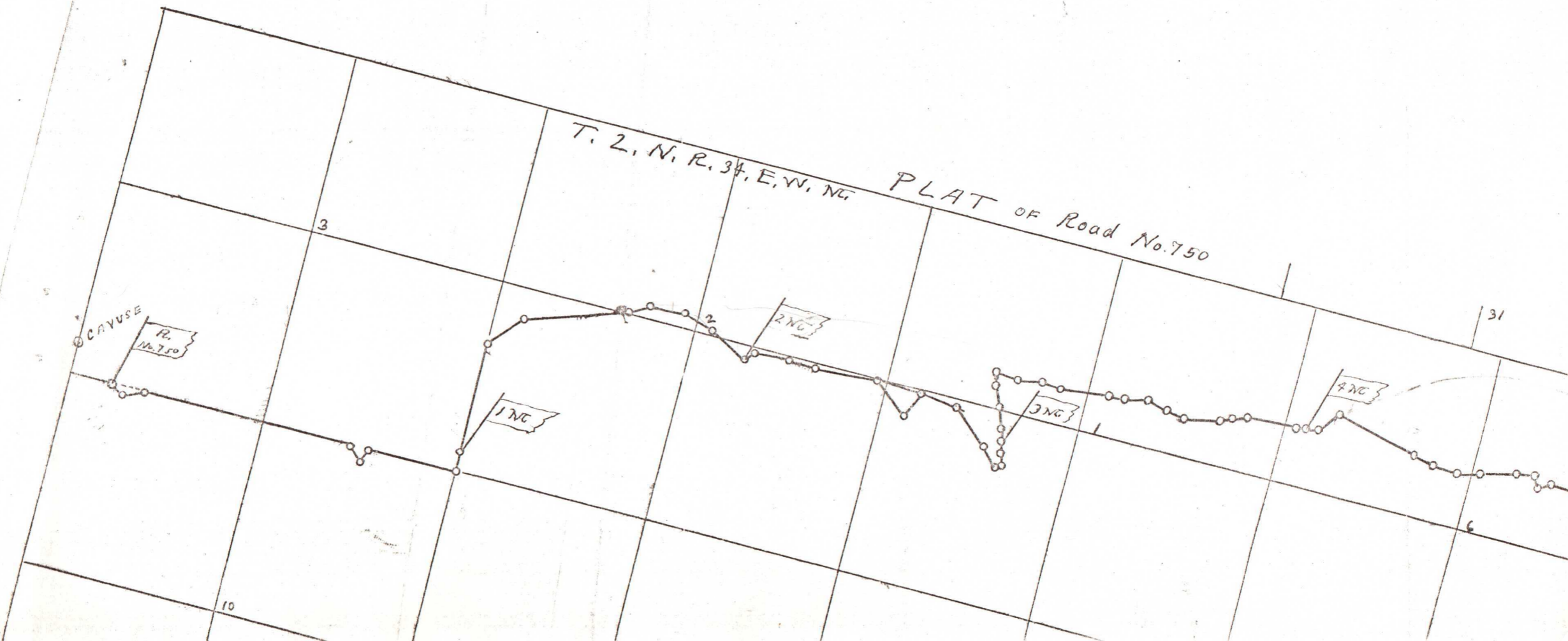
4 NC

3

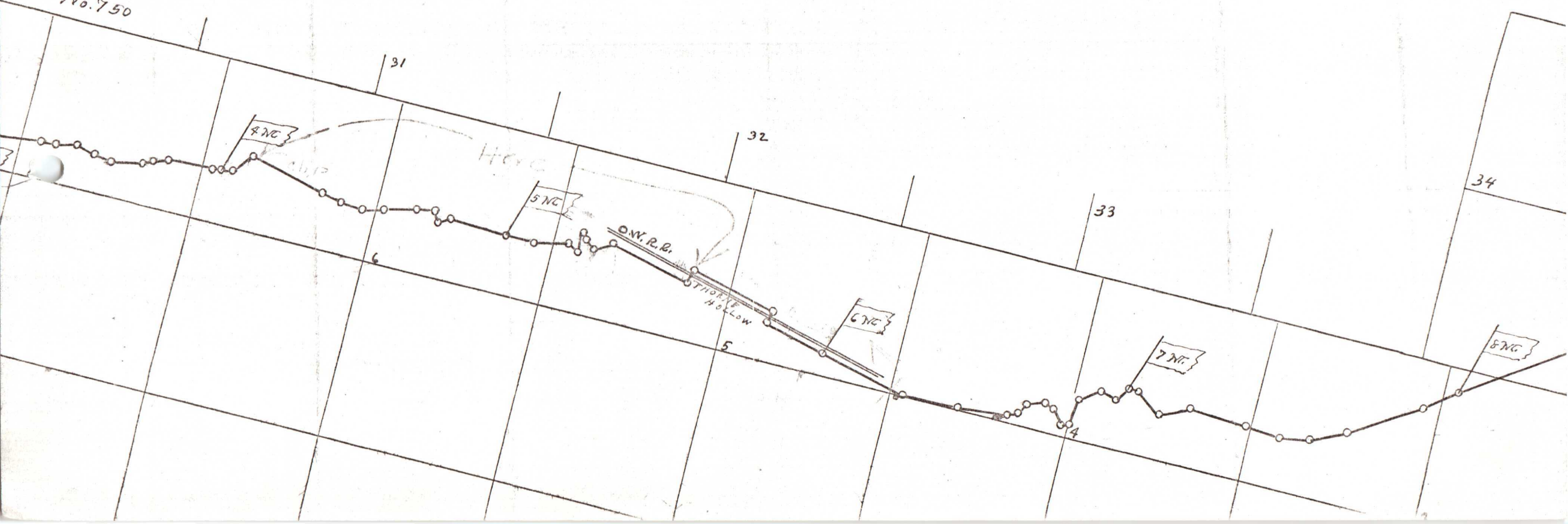
31

6

10



Road No. 750



31

32

33

34

4 NC

5 NC

6 NC

7 NC

8 NC

Here

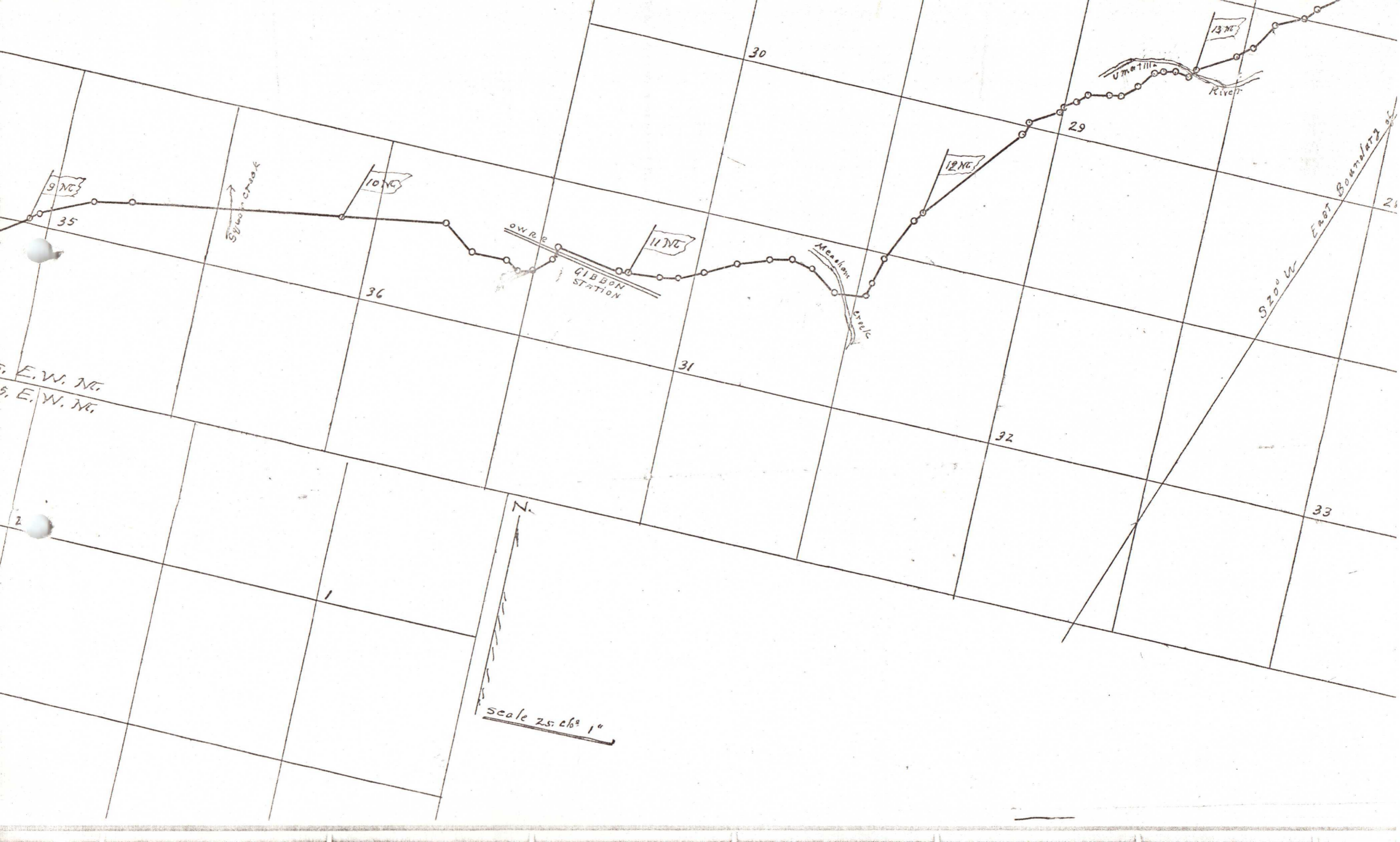
D.W. R.R.

TIDE HOLLOW

6

5

4



9 NC

35

Saw Creek

10 NC

36

owr

GIBBON STATION

11 NC

31

Mesa Creek

12 NC

29

13 NC

River

S 20° W East Boundary of

32

33

E. W. N.

S. E. W. N.

N.
scale 25: 1"