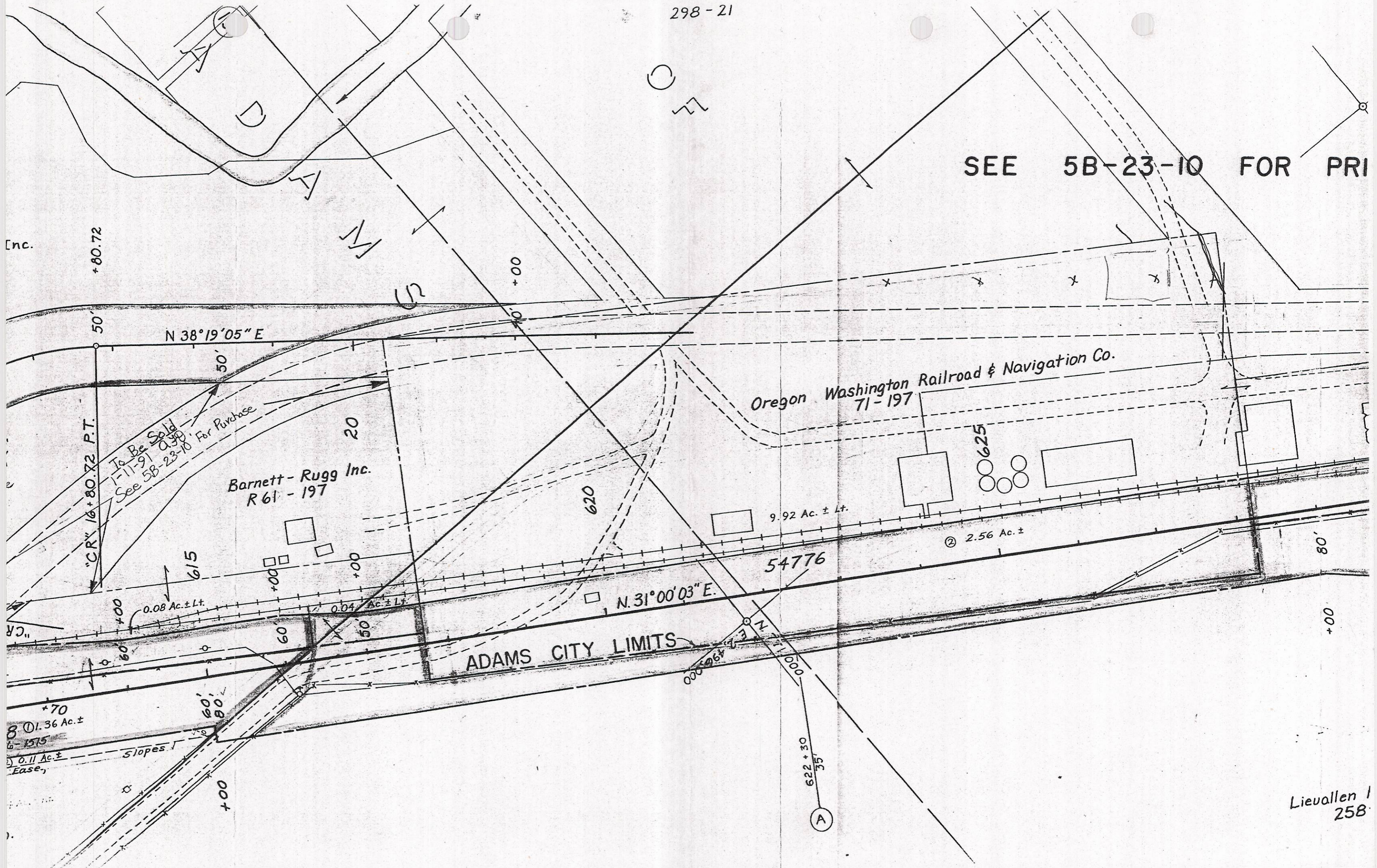


SEE 5B-23-10 FOR PRI

Enc.



N 38°19'05" E

Oregon Washington Railroad & Navigation Co.
71-197

Barnett-Rugg Inc.
R 61-197

ADAMS CITY LIMITS

N. 31°00'03" E.

54776

9.92 Ac. ± Lt.

② 2.56 Ac. ±

01.36 Ac. ±

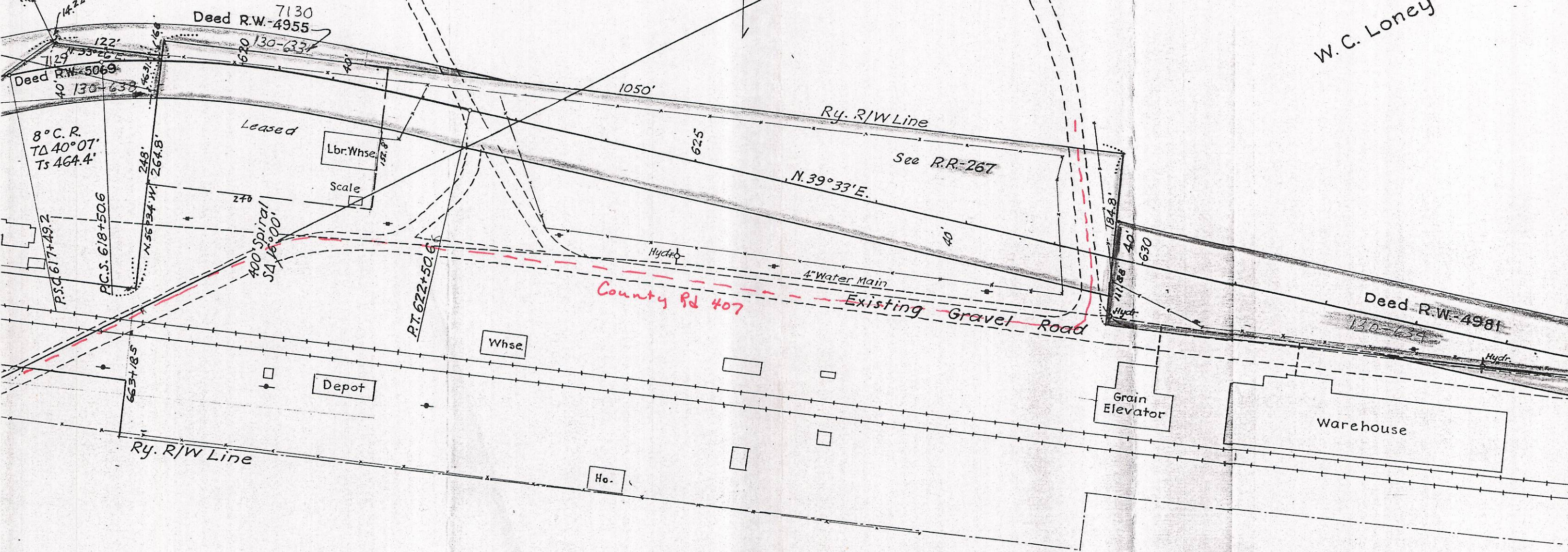
0.11 Ac. ±

Lievallan /
258

F.W. Carothers et ux
~~W.F. Crothers~~

Charles Schatz

W.C. Loney



Deed R.W. 4955

Deed R.W. 5069

Deed R.W. 4981

8° C.R.
TD 40° 07'
Ts 464.4'

Ry. R/W Line

See R.R. 267

N. 39° 33' E.

County Rd 407

Existing Gravel Road

Depot

Whse.

Grain Elevator

Warehouse

Ho.

113° 30' E.

14.22'

7130

122'

620

130-633'

1050'

625'

40'

40'

40'

40'

40'

40'

40'

40'

40'

P.S. 617+49.2

P.C.S. 618+50.6

248'

N. 56° 34' W.

264.8'

400 Spiral
S 41° 16' 00'

P.T. 622+50.6

663+78.5

Ry. R/W Line

Hydro

4" Water Main

Hydr.

Hydr.