

See Page 24

**ROAD 800**  
WIDTH = 60'

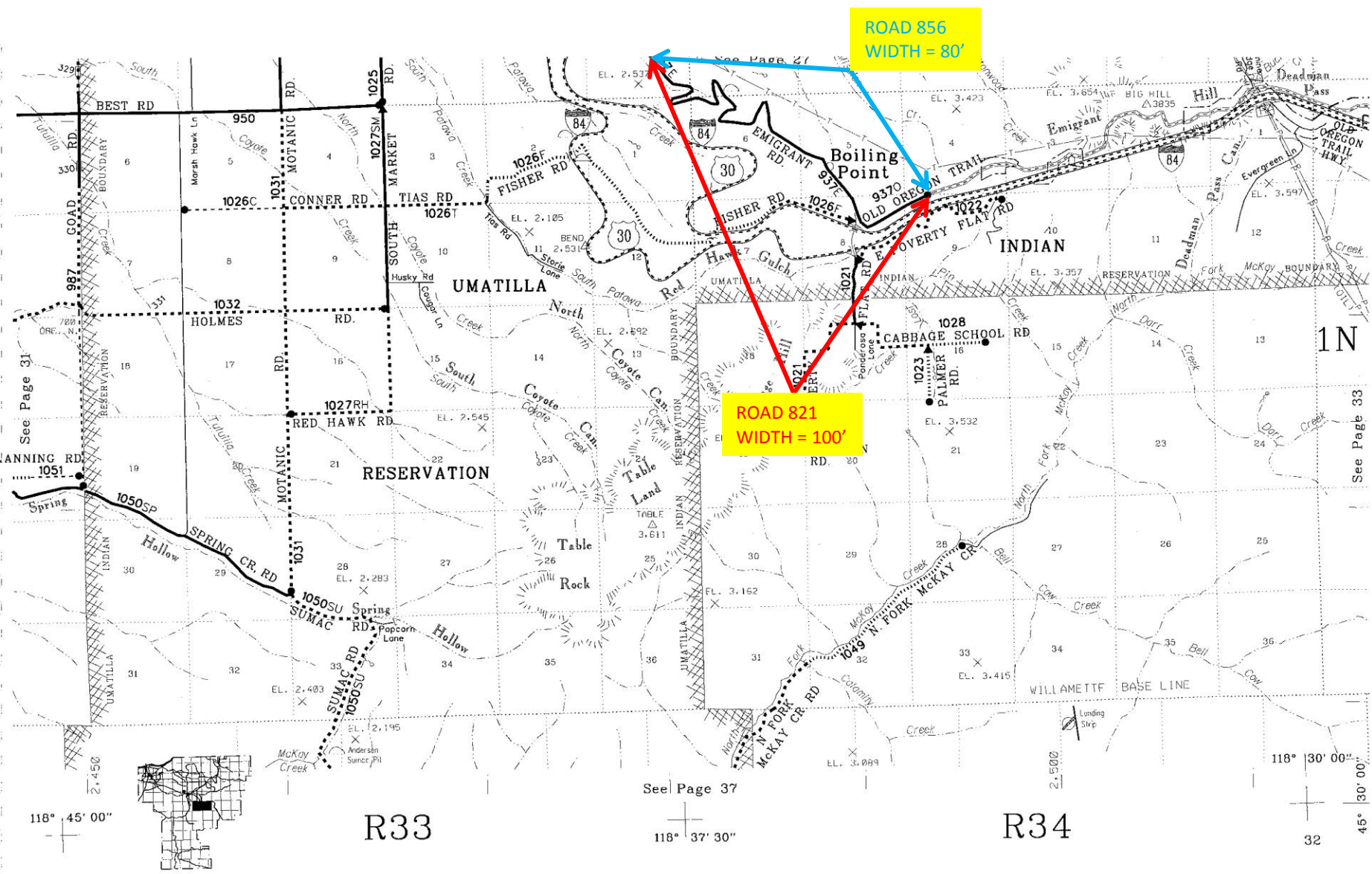
**ROAD 856**  
WIDTH = 80'

**ROAD 821**  
WIDTH = 100'

R33

See Page 32

R34



ROAD 856  
WIDTH = 80'

ROAD 821  
WIDTH = 100'

See Page 31

See Page 33

See Page 37

118° 45' 00"

R33

118° 37' 30"

R34

118° 30' 00"

32

45° 30' 00"

