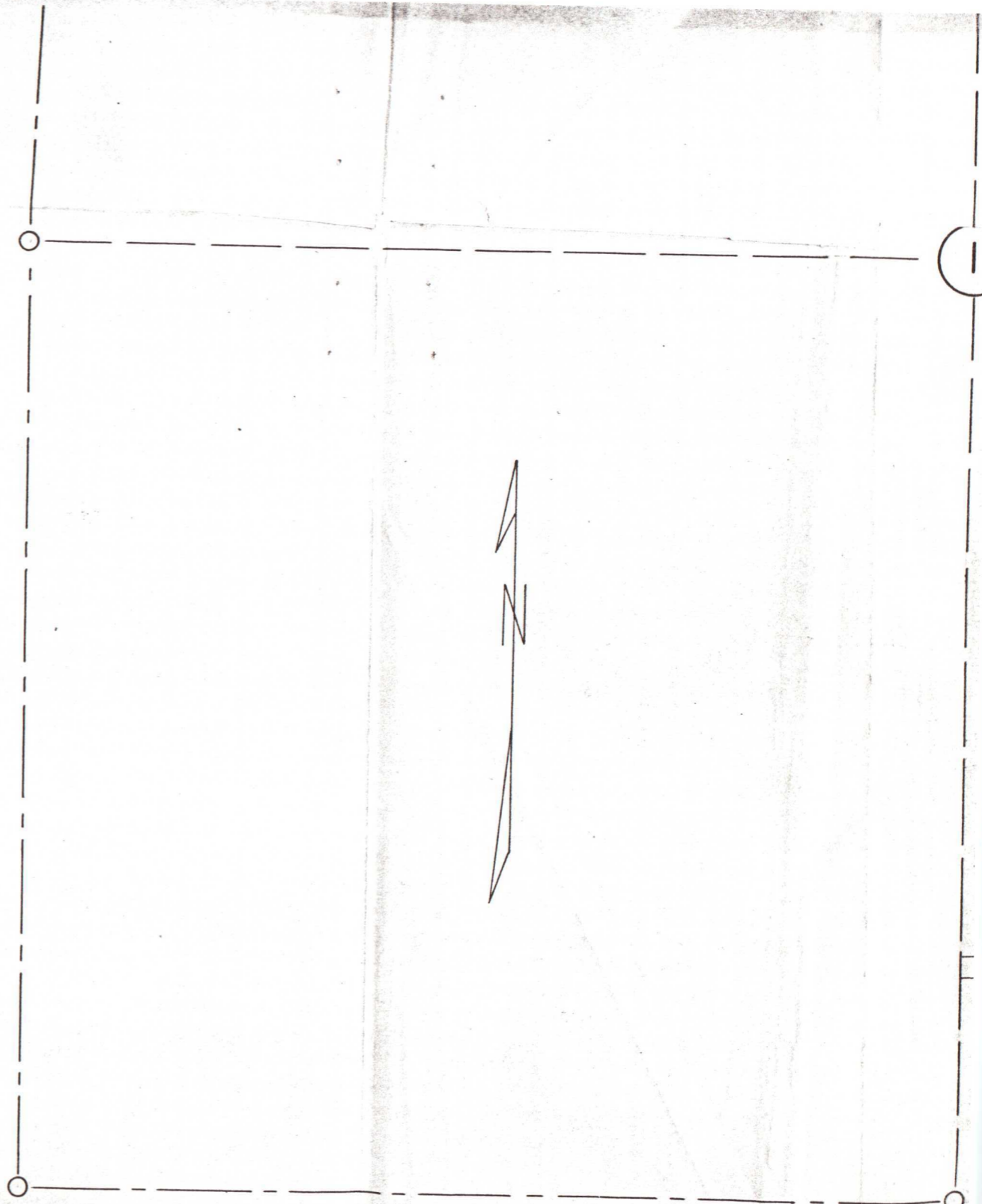


UMATILLA COUNTY OREGON
COUNTY ENGINEERS OFFICE
COUNTY ROAD NO. 817
SCALE 1 IN. = 400 FT. T. 2 N. R. 32. E. W. M





BEGINNING OF PROJECT

ORE. WASH. HIGH.

$N87^{\circ}45'E$ $S75^{\circ}15'E$
335' 338'

1010'
SOUTH

20° 20°

RIVERSIDE AVE.

END OF PROJE