

See Page 30

See Page 14

See Detail Map
Page 67

See Page 32

See Page 36

119° 00' 00"

R31

118° 52' 30"

R32

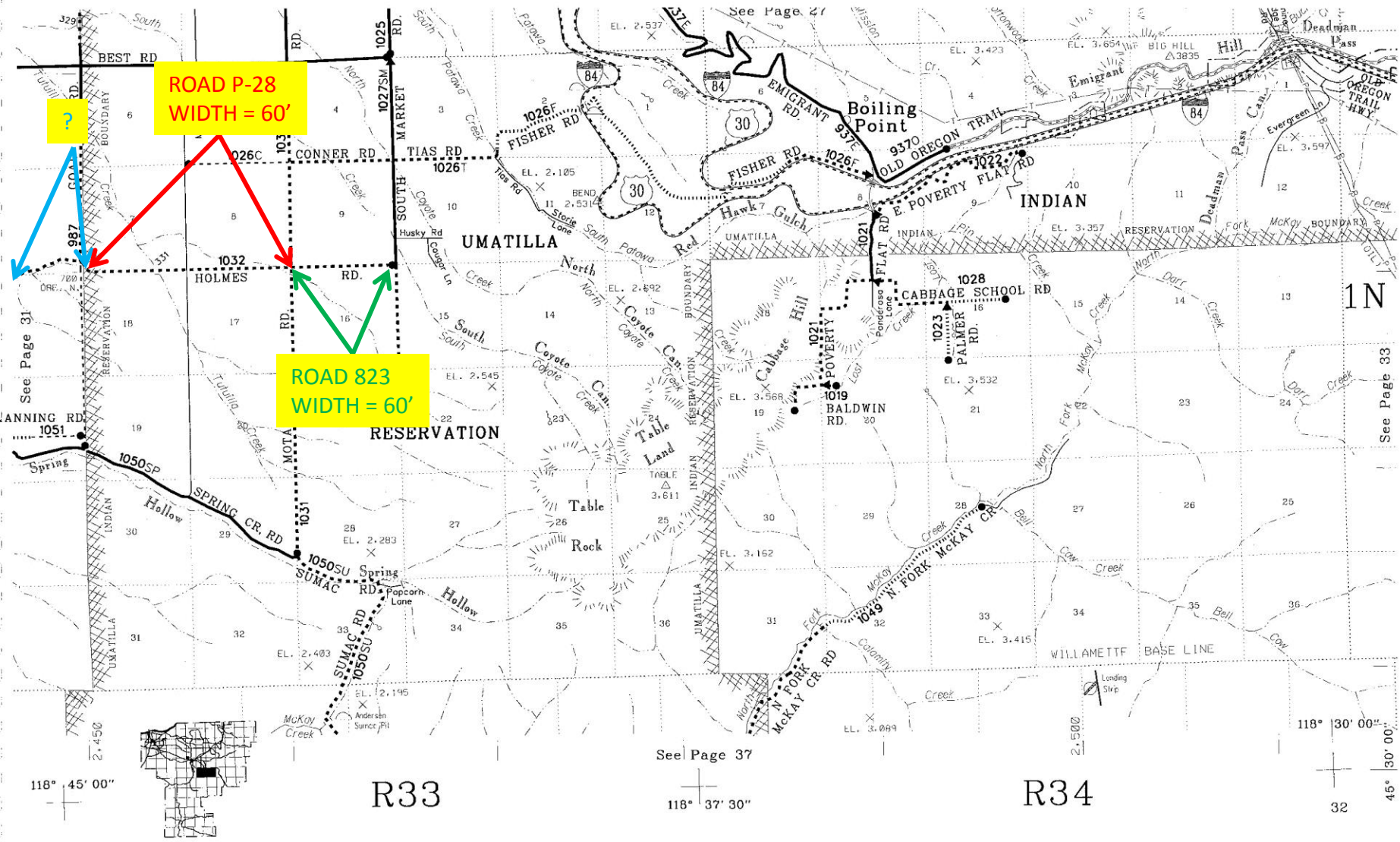
118° 45' 00"

45° 30' 00"

31

**ROAD 409
WIDTH = 60'**

?



?

ROAD P-28
WIDTH = 60'

ROAD 823
WIDTH = 60'

See Page 31

See Page 33

See Page 37

118° 45' 00"

R33

118° 37' 30"

R34

118° 30' 00"

32

45° 30' 00"