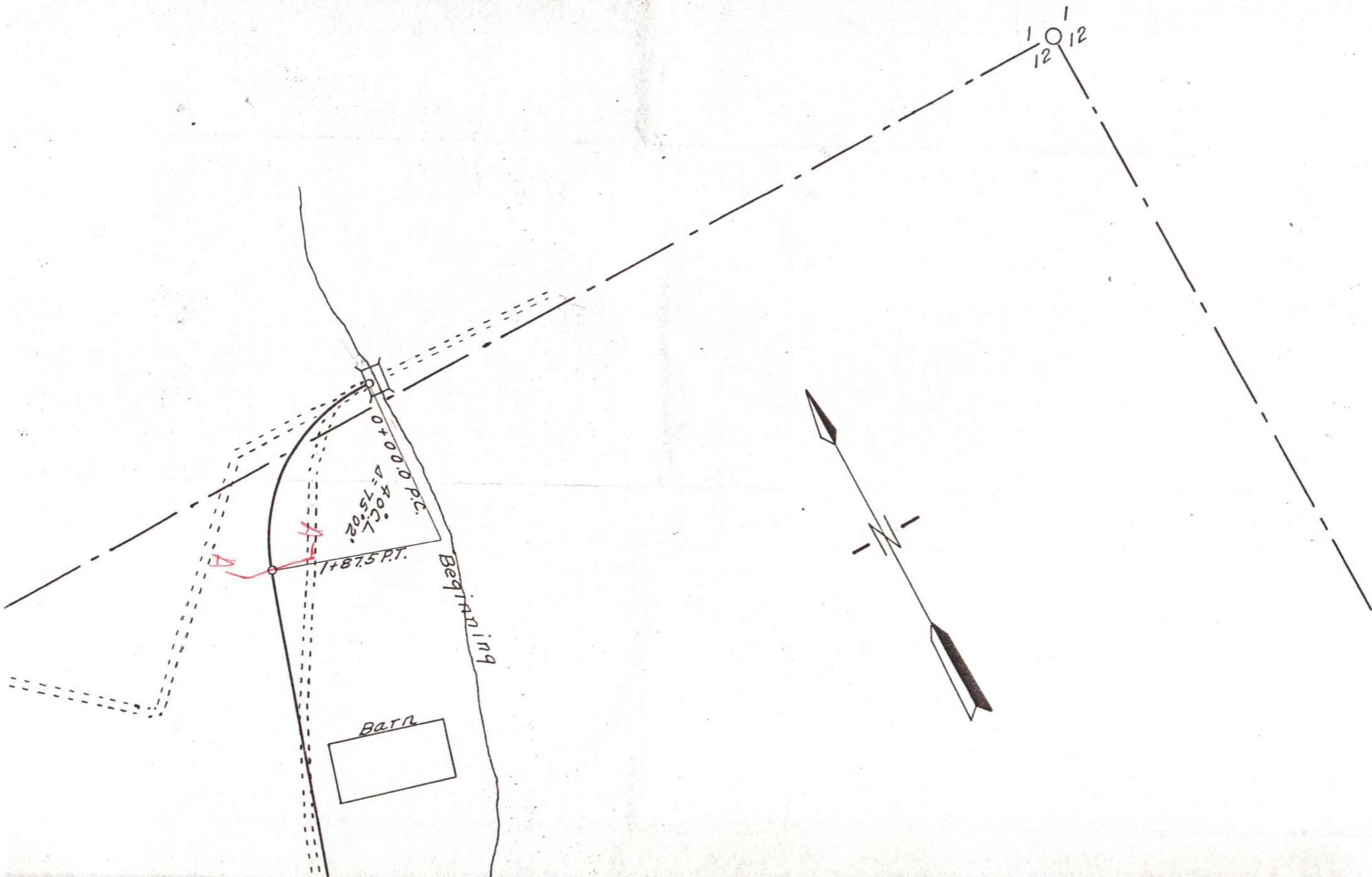
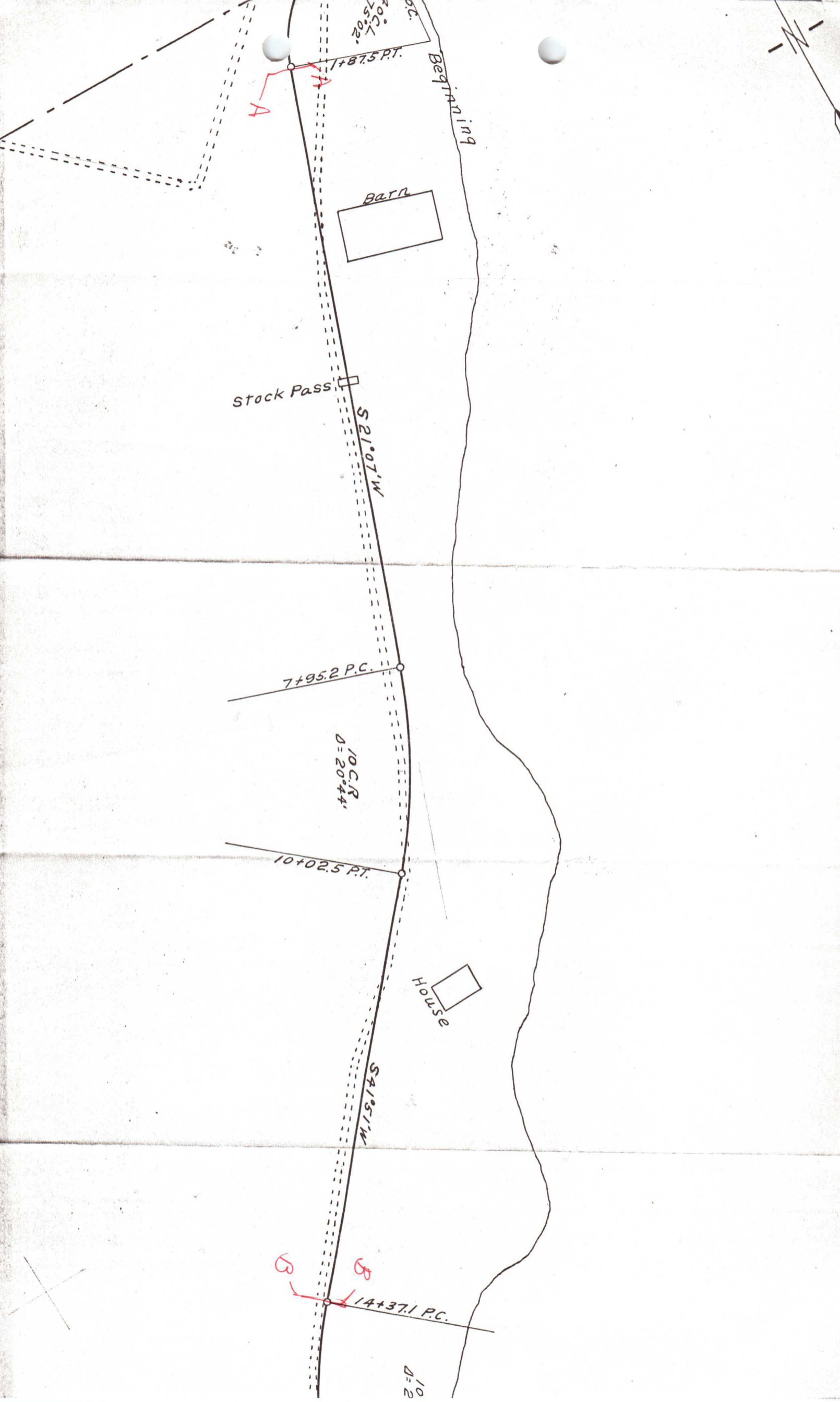


UMATILLA COUNTY OREGON
COUNTY ENGINEERS OFFICE
COUNTY ROAD NO. 871
SCALE 1 IN. = 100 FT. T.1 S. R. 32 E. W. M.







10 C.R.
D=20°44'

1+87.5 P.T.

Beginning

BARR

Stock Pass

S 21° 07' W

7+95.2 P.C.

10 C.R.
D=20°44'

10+02.5 P.T.

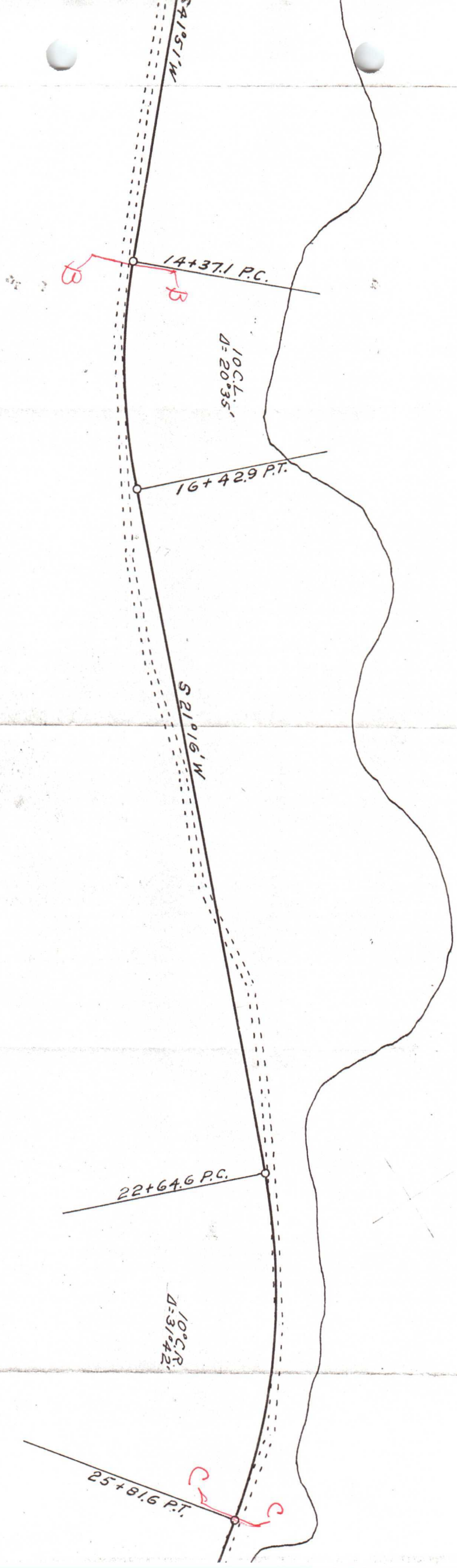
SMOH

S 41° 51' W

B

14+37.1 P.C.

10 C.R.
D=2



S 21° 51' W

14+37.1 P.C.

10° C.L.
D=20° 35'

16+42.9 P.T.

S 21° 16' W

22+64.6 P.C.

10° C.R.
D=31° 42'

25+81.6 P.T.



