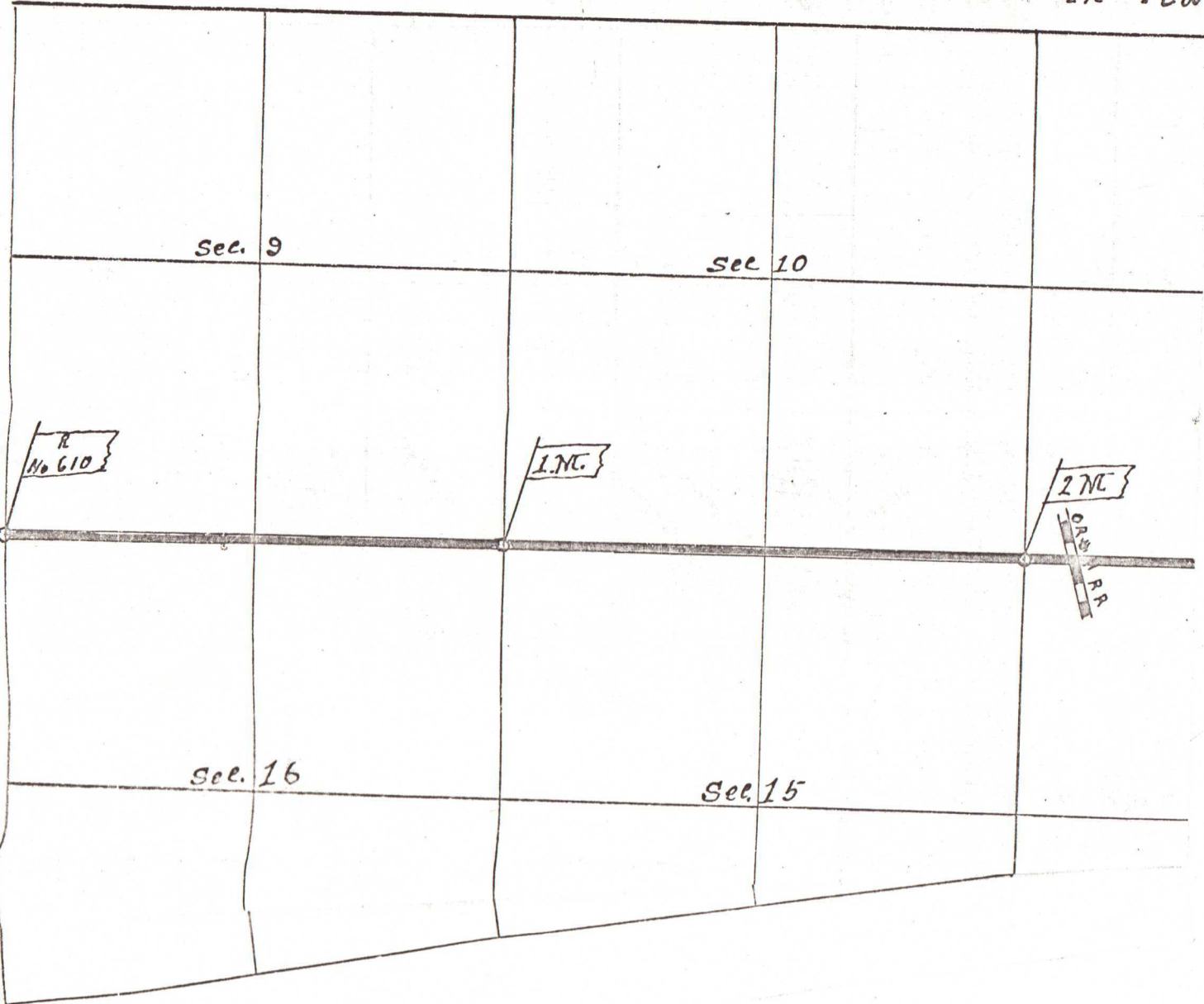


610

in Tow



Sec. 9

Sec 10

R  
No 610

I.N.C.

2 N.E.

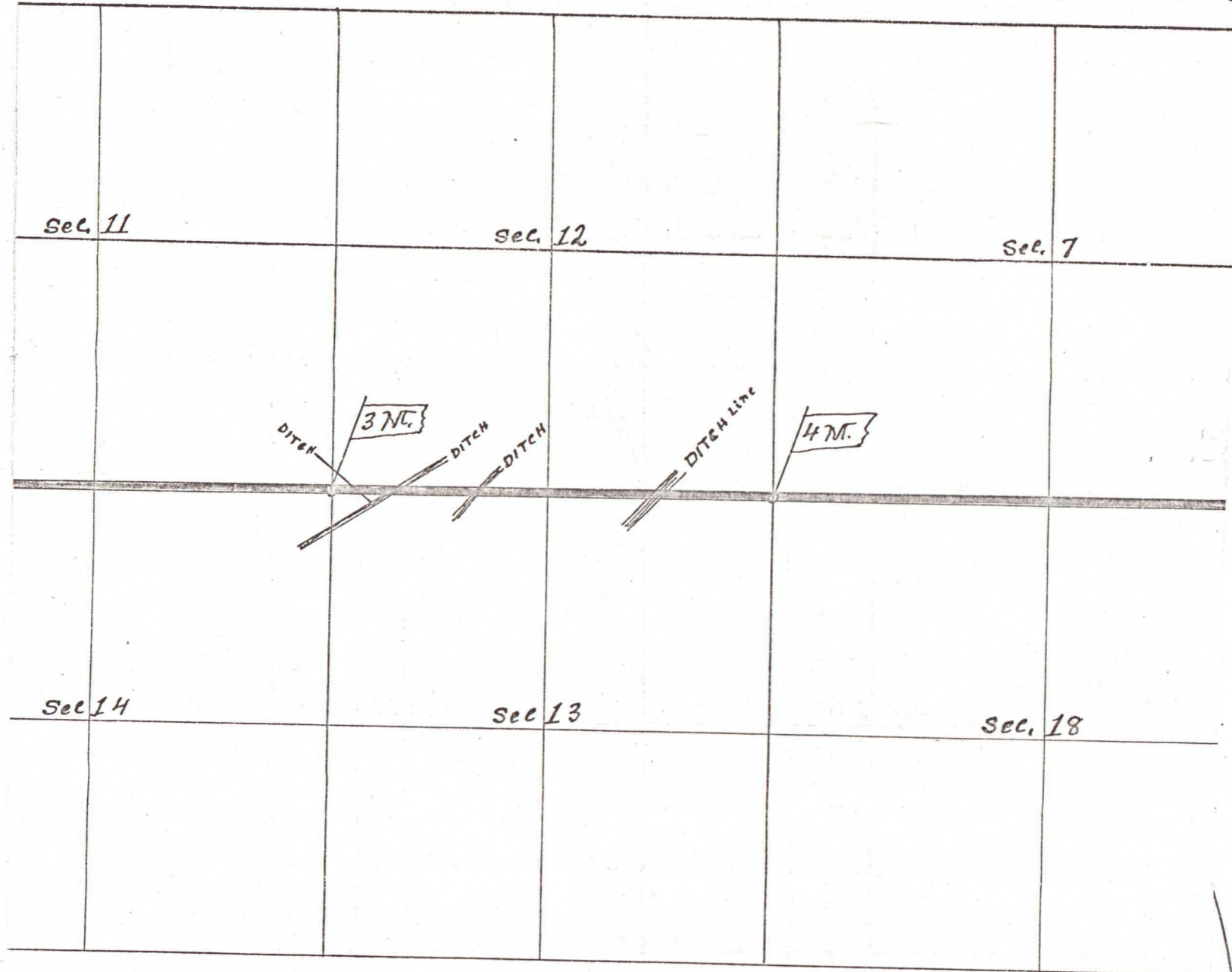
P.P.

Sec. 16

Sec. 15

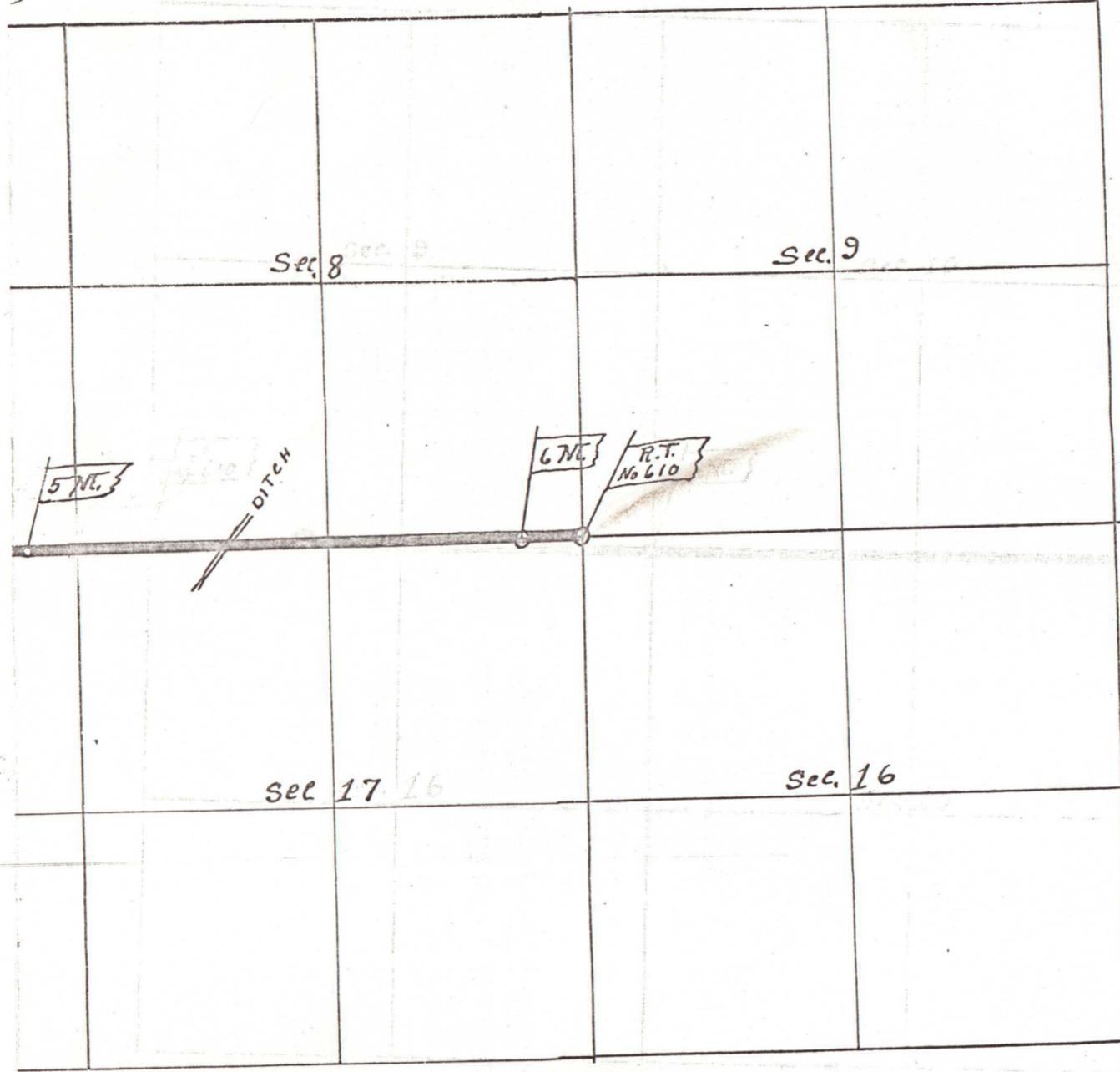
Plat of Road No. 610

Township 4 North Ranges 28<sup>and</sup> 29 East Willamette Meridian C



610

75



True Meridian ↑  
 Var. 21° E ↑  
 Scale 25 ch. 1