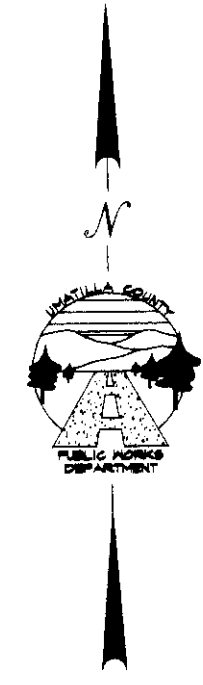
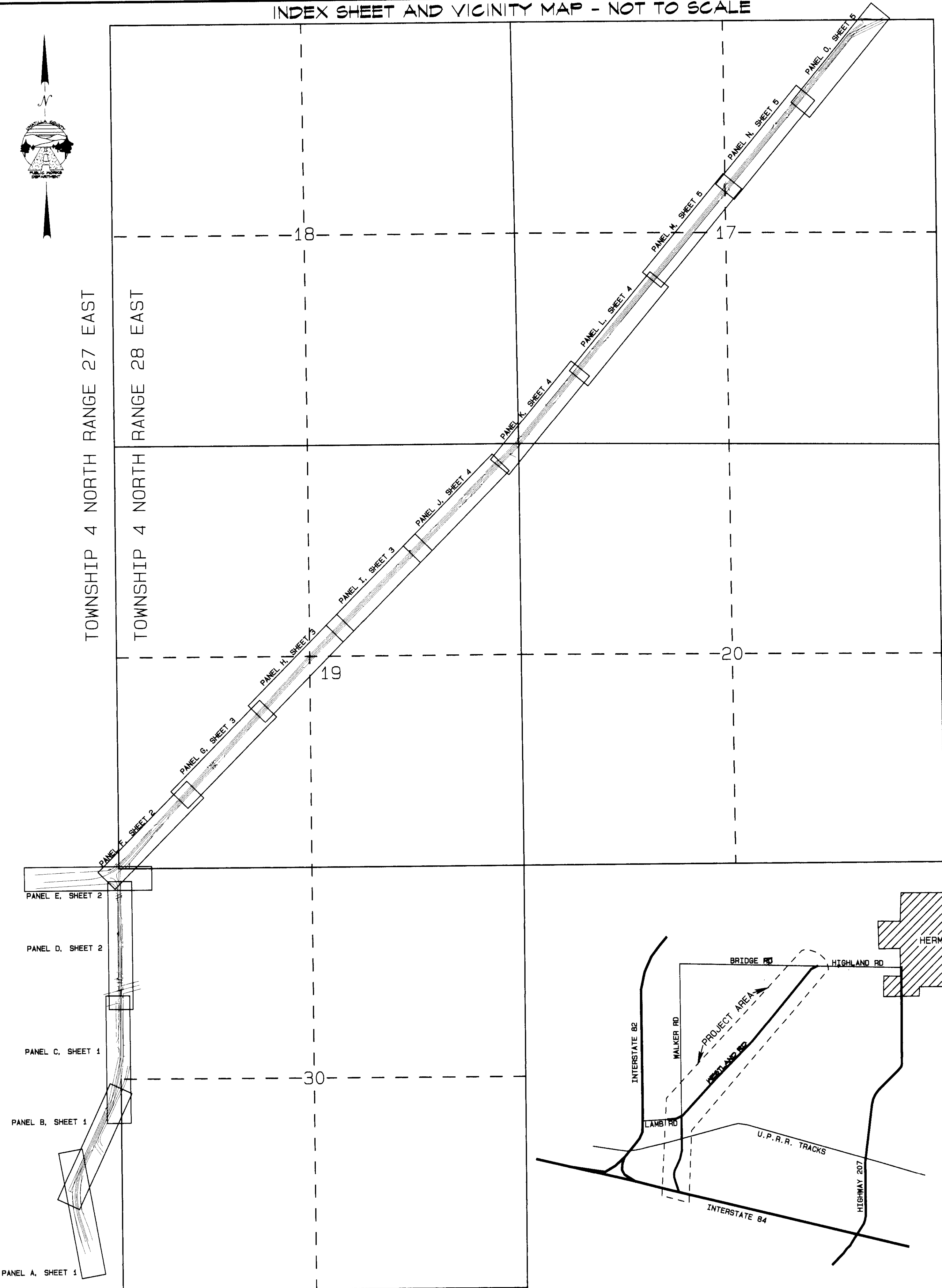


INDEX SHEET AND VICINITY MAP - NOT TO SCALE



TOWNSHIP 4 NORTH RANGE 27 EAST

TOWNSHIP 4 NORTH RANGE 28 EAST



SURVEY NARRATIVE

THE PURPOSE OF THIS SURVEY IS TO MONUMENT THE RIGHT OF WAY LINES OF PORTIONS OF COUNTY ROAD 1215, WESTLAND ROAD. SOME OF THE ROAD FROM THE NEW WALKER ROAD-WESTLAND ROAD INTERSECTION NORTH TO BRIDGE ROAD MAY REQUIRE LEGALIZATION PROCEEDINGS IN THE FUTURE, AS THERE HAS BEEN SOME DISAGREEMENT OVER THE YEARS AS TO THE CORRECT LOCATION OF THE SECTION CORNERS WHICH CONTROL THE ROAD LOCATION (COUNTY ROAD NO. 849). THE ALIGNMENT SHOWN IS A "BEST-FIT" WITH THE EXISTING TRAVELED ROAD AND SURVEY MONUMENTS SET OVER THE YEARS. THE LOCATION OF THE PORTION OF THE WALKER ROAD-WESTLAND ROAD INTERSECTION IS A COMBINATION OF ROAD 849, ROAD 651, AND DEEDS. IT HAS BEEN WELL MONUMENTED IN SURVEYS WHICH AGREE WITH EACH OTHER AND IS SHOWN ON THIS MAP FOR INFORMATION PURPOSES.

VIVA GPS SYSTEM OPERATING IN R.T.K. MODE. BEARINGS ARE GEODETIC AND ARE FROM OBSERVATIONS TAKEN AT THE BASE STATION LOCATED APPROXIMATELY 500 FEET WESTWESTERLY OF THE NORTH 1/4 CORNER OF SECTION 25, TOWNSHIP 4 NORTH, RANGE 27 E.W.M. FOR RECORD MEASUREMENTS ALONG SECTION LINES NOT SHOWN, SEE SURVEY NO. 12-142-C.

FOUND MONUMENTS COORDINATE TABLE

POINT NO.	LOCAL NORTHING	LOCAL EASTING
1	49966.55	53038.34
2	49961.00	53039.70
3	50134.83	52999.39
4	50156.06	53034.80
5	50151.93	53118.93
6	50130.51	53138.93
7	50203.63	53104.01
8	50154.44	53161.63
9	50154.83	53156.51
10	50224.00	53143.99
11	50226.74	53162.30
12	50508.63	53409.37
13	50569.06	53565.84
14	50573.15	53612.24
15	50529.15	53521.34
16	50726.84	53612.39
17	50729.74	53612.39
18	51131.01	53988.83
19	51090.13	54032.74
20	51304.86	54223.43
21	52791.41	55560.32
22	52790.83	55552.52
23	53640.27	55777.46
24	53580.54	55631.47
25	54109.51	55843.75
26	54041.21	55816.28
27	54907.07	57719.99
28	55152.09	57973.95
29	55295.93	58101.63
30	55253.26	58172.81
31	55427.23	58202.07
32	55427.04	58232.07
33	55511.84	58227.19
34	55897.58	58549.23
35	56029.44	58736.69
36	56359.93	58935.19
37	56704.66	59223.28
38	56740.02	59331.69
39	57051.03	59512.94
40	58052.51	60349.83
41	58052.51	60460.88
42	58633.17	60833.46
43	58604.63	60810.83
44	58950.30	60952.62
45	59342.56	61429.52
46	59678.55	61787.67
47	59638.08	61917.73
48	45328.97	52641.79
49	45584.1	52694.27
50	45611.59	52550.99
51	45764.97	52643.19
52	45824.91	52620.92
53	45973.32	52602.94
54	46054.82	52604.63
55	46054.82	52488.45
56	46335.60	52608.76
57	46382.50	52627.90
58	46500.27	52700.87
59	46590.46	52774.05
60	46655.76	52791.23
61	46571.06	52817.04
62	46736.50	52795.86
63	47151.91	52926.84
64	47200.50	52965.47
65	47190.79	53006.59
66	47792.80	53087.50
67	47971.26	53216.66
68	47948.00	52998.30
69	48471.21	53094.67
70	48781.04	53216.66
71	48829.44	53135.11
72	48933.86	53137.71
73	49461.63	53136.40
74	49765.94	53136.40
75	49935.52	53136.60
76	49515.84	52973.71
77	50065.62	52965.81

DEED RECORDS

BARGAIN AND SALE DEED, FRANK N. SWAYZE AND M. ADELAIDE SWAYZE AND ROGER J. BOUNDS AND DORIS S. BOUNDS TO THE UMATILLA COUNTY ROAD DEPARTMENT, BOOK 228 PAGE 639.

WARRANTY DEED, DORIS SWAYZE BOUNDS TO STATE OF OREGON FOR ROAD RIGHT-OF-WAY, BOOK 284 PAGE 222.

VACATION ORDER, VACATION OF MEADOW VALLEY COUNTY ROAD, REEL 209 PAGE 391.

SEE SURVEY NO. 12-142-C (R-1) FOR DEED RECORDS NEAR THE NEW LAMB-WESTLAND INTERSECTION.

COUNTY ROAD, STATE HIGHWAY, AND RAILROAD RECORDS

PLAT AND FIELD NOTES OF OLD COUNTY ROAD NO. 849 (NEW NO. 1215, WESTLAND ROAD) BY THE UMATILLA COUNTY ENGINEERS OFFICE, DATED JULY 1926.

PLAT AND FIELD NOTES OF OLD COUNTY ROAD NO. 651 (NEW NO. 1239, AGNEW ROAD) BY JOHN KIMBRELL, COUNTY SURVEYOR, DATED APRIL 25, 1908.

PLAT AND FIELD NOTES OF OLD COUNTY ROAD NO. 650 (NEW NO. 1225, POWERLINE ROAD) BY JOHN KIMBRELL, COUNTY SURVEYOR, DATED APRIL 22, 1908.

PLAT AND FIELD NOTES OF OLD COUNTY ROAD NO. 652 (NEW NO. 1200, BRIDGE ROAD) BY JOHN KIMBRELL, COUNTY SURVEYOR, DATED APRIL 23, 1908.

PLAT AND FIELD NOTES OF OLD COUNTY ROAD NO. 653 (COTTONWOOD BEND ROAD AND LEWIS ROAD) BY JOHN KIMBRELL, COUNTY SURVEYOR.

OREGON-WASHINGTON RAILROAD & NAVIGATION COMPANY RIGHT-OF-WAY AND TRACK MAP NO. V.ORE.4-40 (MAIN LINE-MESSNER TO HINKLE) DATED JUNE 30, 1916 AND REVISED DECEMBER 31, 1927

OREGON STATE HIGHWAY DEPARTMENT MAP NO. 56-29-12 (INTERSTATE 84)

CALCULATED POINTS

POINT NO.	STATION	OFFSET	LOCAL NORTHING (ft)	LOCAL EASTING (ft)
49	"M2"12+39.47 P.O.T.	70.00' LT.	45,494.58	52,735.61
57	"M2"5+91.65 P.O.C.	0.00'	46,103.17	52,539.41
58	"M2"6+00.00 P.O.C.	50.00' LT.	46,092.00	52,588.77
59	"M2"6+01.04 P.O.C.	50.00' RT.	46,096.59	52,486.88
60	"M2"5+91.61 P.O.C.	74.91' RT.	46,108.08	52,464.65
61	"M2"5+81.67 P.O.C.	102.82' RT.	46,120.93	52,437.55
71	"M1"107+02.61 P.O.T.	0.00'	47,193.65	52,979.48
73	"M1"112+87.14 P.O.C.	0.00'	47,757.67	53,116.71
75	"M1"113+21.96 P.T.	0.00'	47,792.48	53,117.49
76	"M1"113+21.96 P.T.	30.00' RT.	47,792.17	53,147.49
77	"M1"114+38.34 P.O.T.	30.00' LT.	47,909.17	53,088.71
78	"M1"114+74.56 P.O.T.	30.00' LT.	47,945.38	53,089.09
82	"M1"121+20.44 P.O.T.	30.00' RT.	48,590.60	53,155.82
83	"M2"122+18.61 P.O.T.	20.00' RT.	48,689.16	53,137.57
92	"M3"20+84.71 P.O.T.	100.15' LT.	50,085.49	52,064.76
93	"M3"22+00.00 P.O.T.	0.00'	49,991.09	52,175.26
94	"M3"27+52.68 P.C.	0.00'	50,020.49	52,727.15
95	"M3"31+58.35 P.O.C.	0.00'	50,155.02	53,103.88
	"M2"136+84.44 P.O.T.	15.04' LT.		
96	"M3"31+77.22 P.O.C.	0.00'	50,166.37	53,118.94
	"M2"136+95.81 P.O.T.	0.00'		
97	"M3"32+90.05 P.T.	0.00'	50,242.40	53,202.14
98	"M3"32+90.05 P.T.	30.00' LT.	50,262.84	53,180.19
99	"M3"44+76.49 P.O.T.	0.00'	51,110.56	54,010.80
100	"M3"49+72.03 P.I.	0.00'	51,473.17	54,348.56
101	"M3"49+72.03 P.I.	30.00' LT.	51,493.61	54,326.59
102	"M3"49+72.03 P.I.	30.00' RT.	51,452.74	54,370.52
103	"M3"58+54.64 P.O.T.	0.00'	52,119.70	54,949.39
104	"M3"58+54.64 P.O.T.	30.00' LT.	52,140.12	54,927.42
105	"M3"58+54.64 P.O.T.	30.00' RT.	52,099.27	54,971.37
106	"M3"67+37.25 P.I.	0.00'	52,766.22	55,550.23
107	"M3"67+37.25 P.I.	30.00' LT.	52,787.01	55,528.59
108	"M3"67+37.25 P.I.	30.00' RT.	52,745.43	55,571.86
109	"M3"67+72.66 P.O.T.	0.00'	52,791.34	55,575.19
110	"M3"72+82.05 P.O.T.	0.00'	53,152.69	55,934.21
111	"M3"72+82.05 P.O.T.	30.00' LT.	53,173.83	55,912.93
112	"M3"72+82.05 P.O.T.	30.00' RT.	53,131.54	55,955.49
113	"M3"86+25.59 P.O.T.	5.04' LT.	54,109.32	56,877.61
114	"M3"87+18.65 P.O.T.	0.00'	54,171.78	56,946.77
115	"M3"87+18.65 P.O.T.	30.00' LT.	54,192.93	56,925.49
116	"M3"87+18.65 P.O.T.	30.00' RT.	54,150.64	56,968.05
117	"M3"101+84.08 P.O.T.	0.00'	55,211.33	57,979.65
118	"M3"101+84.08 P.O.T.	30.00' LT.	55,232.48	57,958.37
119	"M3"101+84.08 P.O.T.	30.00' RT.	55,190.19	58,000.93
120	"M3"104+88.47 P.O.T.	0.00'	55,427.25	58,194.19
121	"M3"105+00.46 P.I.	0.00'	55,435.76	58,202.64
122	"M3"105+00.46 P.I.	30.03' LT.	55,455.99	58,180.45
123	"M3"105+00.46 P.I.	30.03' RT.	55,415.53	58,224.84
124	"M3"116+67.65 P.O.T.	0.00'	55,331.40	58,951.08
125	"M3"116+67.65 P.O.T.	30.00' LT.	56,350.64	58,928.06
126	"M3"116+67.65 P.O.T.	30.00' RT.	56,312.16	58,974.10
127	"M3"131+79.92 P.O.T.	0.00'	57,491.84	59,920.80
128	"M3"131+79.92 P.O.T.	30.00' LT.	57,511.08	59,897.78
129	"M3"131+79.92 P.O.T.	30.00' RT.	57,472.61	59,943.82
130	"M3"146+02.51 P.O.T.	0.00'	58,583.46	60,833.00
131	"M3"146+02.51 P.O.T.	30.00' LT.	58,602.70	60,809.98
132	"M3"146+02.51 P.O.T.	30.00' RT.	58,564.22	60,856.02
133	"M3"180+82.32 P.O.T.	0.00'	59,718.99	61,781.90
134	"M3"180+82.32 P.O.T.	30.00' LT.	59,738.23	61,758.88
135	"M3"180+82.32 P.O.T.	30.00' RT.	59,699.75	61,804.92
136	"M3"170+86.53 P.C.	0.00'	60,489.57	62,425.84
137	"M3"170+86.53 P.C.	30.00' LT.	60,508.81	62,402.82
138	"M3"170+86.53 P.C.	30.00' RT.	60,470.34	62,448.86
139	"M3"175+82.36 P.T.	0.00'	60,691.77	62,861.16
140	"M3"175+82.36 P.T.	30.00' LT.	60,721.77	62,861.31
141	"M3"175+82.36 P.T.	30.00' RT.	60,661.78	62,861.00
142	"M2"121+61.83 P.O.T.	0.00'	48,632.40	53,117.52
	"M1"121+61.83 P.O.T.	8.73' LT.		
143	"M1"121+64.17 P.O.T.	0.00'	48,634.64	53,126.27
	"M2"121+64.08 P.O.T.	8.75' RT.		
144	"M3"139+10.12 P.O.T.	0.00'	58,052.16	60,389.02
145	"M1"101+02.08 P.O.T.	30.00' RT.	46,638.18	52,749.25

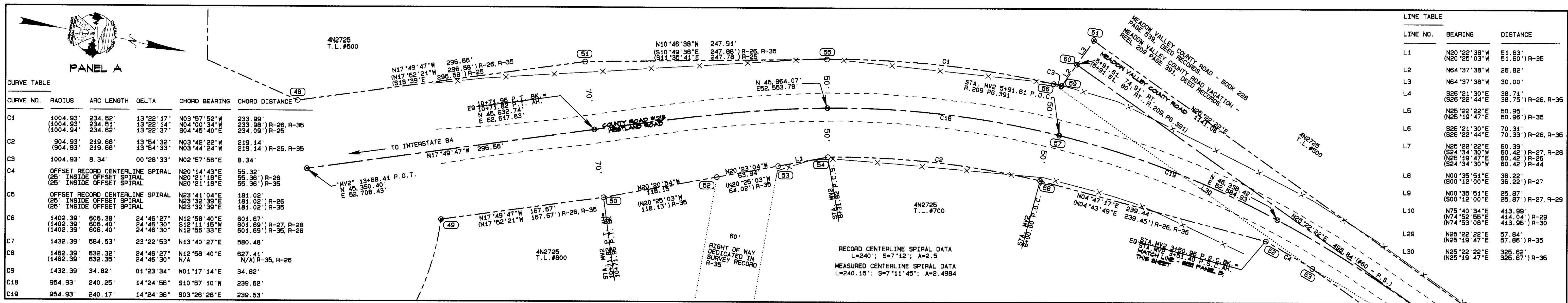
SURVEY RECORDS

R-1	SURVEY NO. 12-142-C BY GARY ROBERTS, LS 2627, FOR UMATILLA COUNTY ROAD DEPARTMENT
R-2	SURVEY NO. 91-040-C BY WALTER SULLIVAN, LS 1746, FOR OREGON DEPARTMENT OF TRANSPORTATION
R-3	SURVEY NO. 98-005-B BY JOHN BAALMAN, LS 02735, FOR HERMISTON GENERATING COMPANY
R-4	SURVEY NO. M-007-A BY DAVID KRUMBEIN, LS 933, FOR LOIS AND ROBERT SMITH
R-5	SURVEY NO. P-062-C BY WAYNE HARRIS, LS 346, FOR LAMB WESTON
R-6	SURVEY NO. 09-006-C BY DENNIS EDWARDS, LS 951, FOR VALMONT NORTHWEST INC.
R-7	SURVEY NO. F-007-C BY DONALD STAEBLER, PE 05408, FOR MALCOM-ADRIAN SKINNER
R-8	BOOK 13 PAGE 15 (REPLAT OF BLOCK 4 & FIRST ADDITION TO WESTLAND ESTATES-PHASE I) BY RONALD MCKINNIS, LS 2431.
R-9	SURVEY NO. 95-036-B BY GARY ROBERTS, LS 2627, FOR UMATILLA COUNTY ROAD DEPARTMENT
R-10	SURVEY NO. 00-094-B BY JUDDSON COPPOCK, LS 2850, FOR COLUMBIA BASIN STORAGE
R-11	BOOK 10 PAGE 5 (WESTLAND ESTATES) BY DONALD STAEBLER, PE 05408.
R-12	PARTITION PLAT 2012-14 BY DENNIS EDWARDS, LS 951, FOR C.P. ENTERPRISES, INC.
R-13	SURVEY NO. 01-125-B BY DENNIS EDWARDS, LS 951, FOR WESTLAND IRRIGATION DISTRICT.
R-14	SURVEY NO. 11-137-B BY DENNIS EDWARDS, LS 951, FOR G.D. EDWARDS.
R-15	PARTITION PLAT 2012-01 BY DENNIS EDWARDS, LS 951, FOR HSG-D, LLC.
R-16	SURVEY NO. 84-028-B BY DAVID KRUMBEIN, LS 933, FOR MARTIN PITNEY.
R-17	SURVEY NO. 00-184-B BY GARY WAGNER, LS 02817, FOR NEW BEGINNINGS CHURCH.
R-18	SURVEY NO. 04-105-B BY DENNIS EDWARDS, LS 951, FOR LYLE POTTER.
R-19	REMONUMENTATION RECORD NO. 98-097-R BY GARY WAGNER, LS 02817.
R-20	SURVEY NO. 02-160-B BY DENNIS EDWARDS, LS 951, FOR U.E.C.
R-21	SURVEY NO. 05-044-C BY DENNIS EDWARDS, LS 951, FOR LINDA SEAVERT.
R-22	SURVEY NO. 00-060-B BY DENNIS EDWARDS, LS 951, FOR BILL BREWER.
R-23	SURVEY NO. 00-097-C BY GARY ROBERTS, LS 2627, FOR UMATILLA COUNTY ROAD DEPARTMENT.
R-24	SURVEY NO. H-142-B BY DONALD STAEBLER, PE 05408, FOR WESTLAND ESTATES SUBDIVISION.
R-25	SURVEY NO. E-009-B BY DONALD STAEBLER, PE 05408, FOR DORIS BOUNDS AND ED JOHNSON.
R-26	SURVEY NO. 99-255-C BY WILLIAM WELLS, LS 1106, FOR ROGER BOUNDS.
R-27	SURVEY NO. 89-070-B BY WILLIAM WELLS, LS 1106, FOR THE PORT OF UMATILLA.
R-28	SURVEY NO. S-141-C BY DONALD STAEBLER, LS 1333, FOR ROGER BOUNDS.
R-29	SURVEY NO. 12-112-B BY DENNIS EDWARDS, LS 951, FOR JASON EVANS.
R-30	SURVEY NO. 84-098-A BY DENNIS EDWARDS, LS 951, FOR ROGER BOUNDS.
R-31	SURVEY NO. 95-131-C BY WILLIAM WELLS, LS 1106, FOR U.S. GENERATING COMPANY.
R-32	SURVEY NO. 93-051-C BY WILLIAM WELLS, LS 1106, FOR LAMB WESTON, INC.
R-33	SURVEY NO. Q-0697-C BY DAVID KRUMBEIN, LS 933, FOR THE PORT OF UMATILLA.
R-34	SURVEY NO. 06-458-B BY BRIT PRIMM, LS 48509, FOR ROMONA VERDEGAN.
R-35	PARTITION PLAT 2000-47 BY WILLIAM WELLS, PLS 1106, FOR BOUNDS/MEDELEZ.
R-36	SURVEY NO. 10-074-B BY GARY WAGNER, LS 02817, FOR THE HERMISTON GENERATING PLANT.
R-37	SURVEY NO. 89-030-A BY DENNIS EDWARDS, LS 951, FOR R. LAMB.
R-38	SURVEY NO. 85-145-B BY DAVID KRUMBEIN, LS 933, FOR ROBERT LAMB.
R-39	SURVEY NO. 99-074-C BY WILLIAM WELLS, LS 1106, FOR ROBERT C. HALE.
R-40	PARTITION PLAT 2002-25 BY WILLIAM WELLS, PLS 1106, FOR PG&E NATIONAL ENERGY GROUP.
R-41	SURVEY NUMBERS 89-234-C AND I-161-C (SAME) BY DAVID KRUMBEIN, PLS 933, FOR THE PORT OF UMATILLA.
R-42	SURVEY NO. 13-141-B BY DENNIS EDWARDS, LS 951, FOR MALCOM SKINNER.
R-43	SURVEY NO. 13-145-A BY DENNIS EDWARDS, LS 951, FOR MALCOM SKINNER.
R-44	PARTITION PLAT 1998-03 BY WILLIAM WELLS, LS 1106, FOR PORT OF UMATILLA.

LEGEND

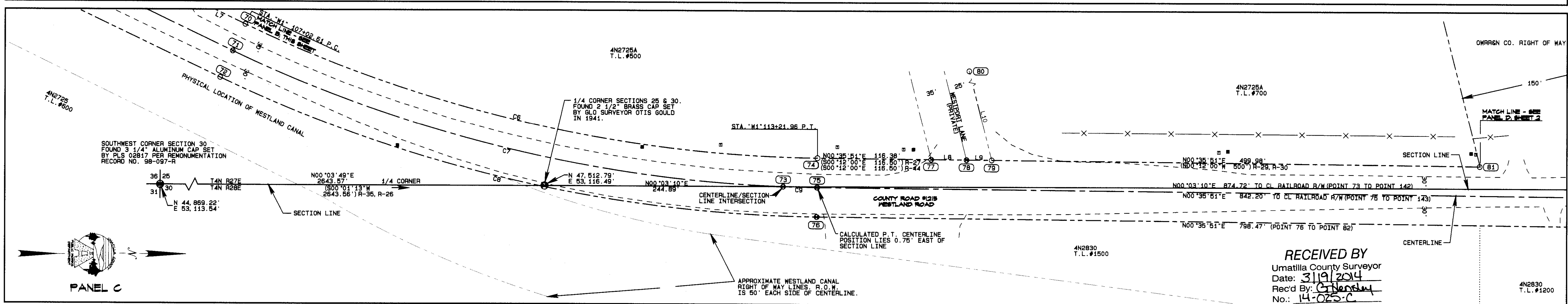
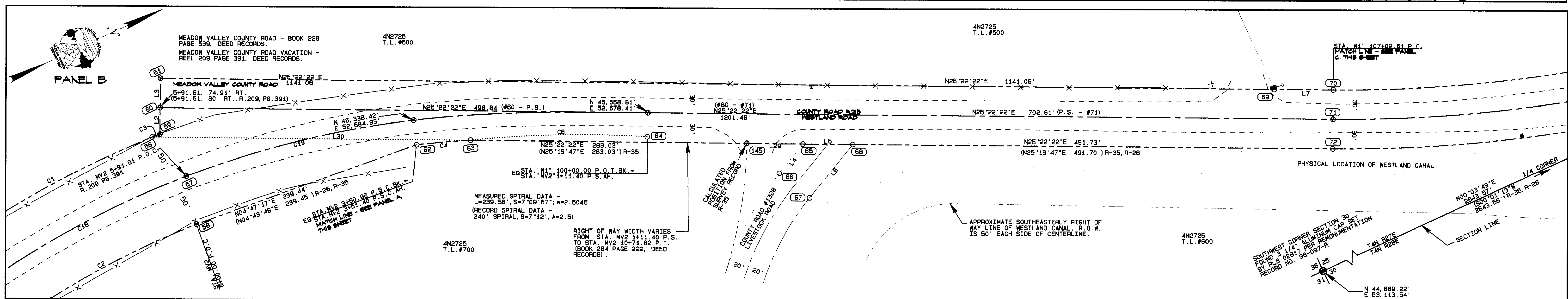
- ⊙ FOUND SECTION CORNER MONUMENT AS NOTED
- FOUND MONUMENT AS NOTED
- ⊗ CALCULATED POSITION (NOTHING FOUND OR SET)
- POWER POLE
- GUY WIRE AND ANCHOR
- ▣ TELEPHONE PEDESTAL
- ◇ WATER VALVE
- CENTERLINE
- - - RIGHT OF WAY LINES
- · - · EDGE OF PAVEMENT OR GRAVEL
- X- FENCE LINE
- +— GUARDRAIL
- (xxx) FOUND MONUMENT OR CALCULATED POSITION (SEE DESCRIPTIONS AND COORDINATE TABLES)

RECEIVED BY
Umatilla County Surveyor
Date: 03/19/2014



LINE TABLE

LINE NO.	BEARING	DISTANCE
L1	N20°22'38"W	51.63' (N20°25'03"W) R-35
L2	N64°37'38"W	26.82'
L3	N64°37'38"W	30.00'
L4	S26°21'30"E	38.71' (S26°22'44"E) R-26, R-35
L5	N25°22'22"E	50.95' (N25°19'47"E) R-35
L6	S26°21'30"E	70.31' (S26°22'44"E) R-26, R-35
L7	N25°22'22"E	60.39' (S24°34'30"W) R-27, R-28
L8	N00°35'51"E	36.22' (S00°12'00"E) R-27
L9	N00°35'51"E	25.87' (S00°12'00"E) R-27, R-29
L10	N75°40'34"E	413.99' (N74°52'55"E) R-29
L29	N25°22'22"E	67.84' (N25°19'47"E) R-35
L30	N25°22'22"E	325.62' (N25°19'47"E) R-35



MONUMENT TABLE

MONUMENT	STATION	OFFSET	DESCRIPTION AND SURVEY FROM WHICH MONUMENT WAS SET
48	"W/2"13+68.41 P.O.T.	70.00' RT.	5/8" IRON PIN WITH ALUMINUM CAP (ODOT MAP 58-29-12)
50	"W/2"10+71.82 P.T.	70.00' LT.	5/8" REBAR WITH YELLOW PLASTIC CAP "OR PLS 1106 WA PLS 17372" (R-26)
51	"W/2"10+71.82 P.T.	70.00' RT.	5/8" REBAR WITH YELLOW PLASTIC CAP "TOMKINS" (ORIGIN UNKNOWN)
52	"W/2"9+51.87 P.O.S.	63.59' LT.	5/8" REBAR WITH YELLOW PLASTIC CAP "OR PLS 1106 WA PLS 17372" (R-26)
53	"W/2"8+85.57 P.O.S.	57.43' LT.	5/8" REBAR WITH YELLOW PLASTIC CAP "OR PLS 1106 WA PLS 17372" (R-26)
54	"W/2"8+31.82 P.C.S.	50.00' LT.	5/8" REBAR WITH YELLOW PLASTIC CAP "OR PLS 1106 WA PLS 17372" (R-26)
55	"W/2"8+31.82 P.C.S.	50.00' RT.	1/2" IRON PIN (R-25)
56	"W/2"6+08.97 P.O.C.	50.00' RT.	1/2" IRON PIN (R-25)

MONUMENT TABLE (CONT.)

MONUMENT	STATION	OFFSET	DESCRIPTION AND SURVEY FROM WHICH MONUMENT WAS SET
62	"W/2"3+51.40 P.S.C.	25.07' LT.	5/8" REBAR WITH YELLOW PLASTIC CAP "OR PLS 1106 WA PLS 17372" (R-26)
63	"W/2"2+94.30 P.O.S.	25.53' LT.	5/8" REBAR WITH YELLOW PLASTIC CAP "OR PLS 1106 WA PLS 17372" (R-26)
64	"W/2"1+11.40 P.S.	24.58' LT.	5/8" IRON PIN (ODOT MAP 58-29-12)
65	"W/1"101+59.92 P.O.T.	30.00' RT.	5/8" REBAR WITH YELLOW PLASTIC CAP "OR PLS 1106 WA PLS 17372" (R-26)
66	"W/1"101+35.95 P.O.T.	60.36' RT.	5/8" REBAR WITH YELLOW PLASTIC CAP "OR PLS 1106 WA PLS 17372" (R-26)
67	"W/1"101+67.34 P.O.T.	85.18' RT.	5/8" REBAR WITH YELLOW PLASTIC CAP "OR PLS 1106 WA PLS 17372" (R-26)
68	"W/1"102+10.87 P.O.T.	30.00' RT.	5/8" REBAR WITH YELLOW PLASTIC CAP "OR PLS 1106 WA PLS 17372" (R-26)
69	"W/1"106+42.22 P.O.T.	30.00' LT.	5/8" REBAR WITH YELLOW PLASTIC CAP "W.R. WELLS PLS 1106" (R-27)
70	"W/1"107+02.61 P.O.T.	30.00' LT.	1/2" IRON PIN (R-28)

MONUMENT TABLE (CONT.)

MONUMENT	STATION	OFFSET	DESCRIPTION AND SURVEY FROM WHICH MONUMENT WAS SET
72	"W/1"107+02.61 P.O.T.	30.00' RT.	5/8" REBAR WITH YELLOW PLASTIC CAP "OR PLS 1106 WA PLS 17372" (R-28)
74	"W/1"113+21.96 P.T.	30.00' LT.	1/2" IRON PIN (R-28)
79	"W/1"115+00.43 P.O.T.	30.00' LT.	RAILROAD SPIKE STAMPED "951" (R-29)
80	"W/1"113+93.83 P.O.T.	430.03' LT.	1/2" IRON PIN (R-30)
81	"W/1"120+00.42 P.O.T.	30.00' LT.	1/2" IRON PIN (R-28)

*SEE INDEX SHEET FOR COORDINATES OF CALCULATED POINTS AND FOUND MONUMENTS, NARRATIVE, LEGEND, SURVEY RECORDS, AND DEED RECORDS.

SCALE 1"=50'

0 50 100

REGISTERED PROFESSIONAL LAND SURVEYOR
GARY R. ROBERTS
RENEWS 12/31/2014

UMATILLA COUNTY ROAD DEPARTMENT
3920 WESTGATE
PENDLETON, OR 97801

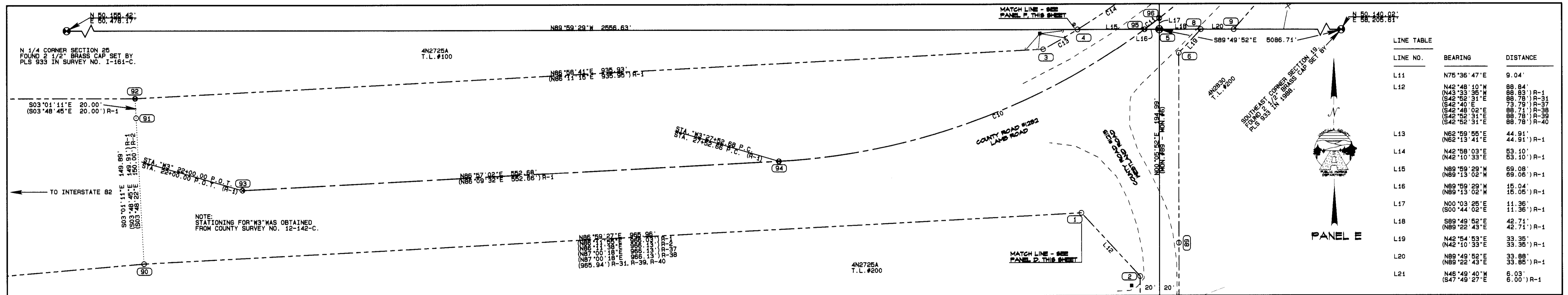
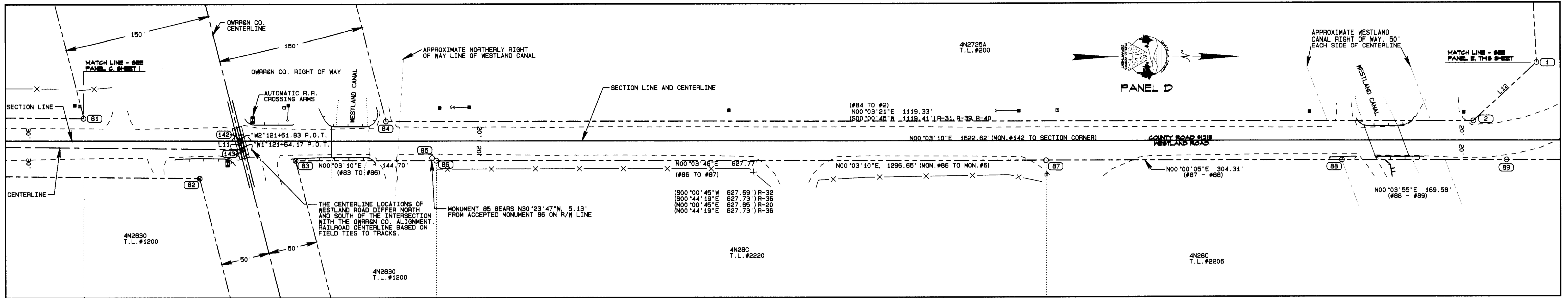
LEGALIZATION SURVEY FOR COUNTY ROAD #1215 WESTLAND ROAD

LOCATED IN SECTIONS 17, 18, 19, 20 & 30 TOWNSHIP 4 NORTH, RANGE 28 EAST, WM.

AND TOWNSHIP 4 NORTH RANGE 27 EAST, WM.

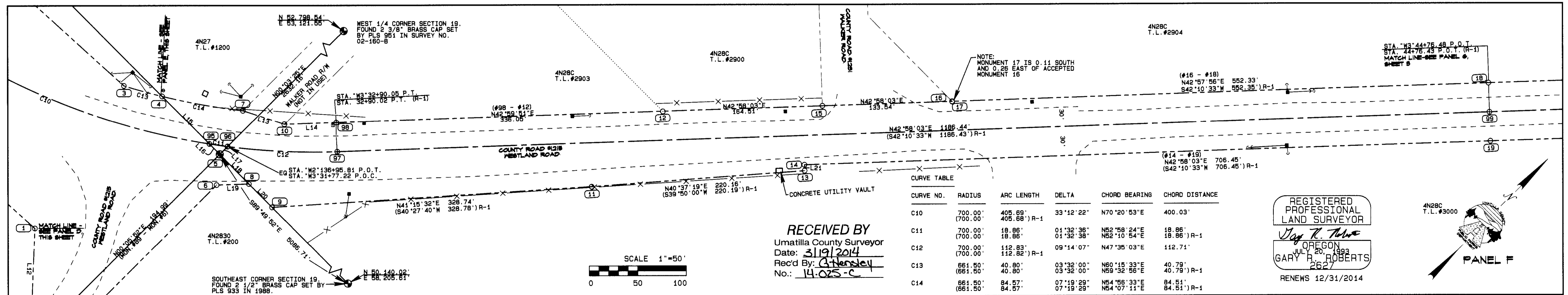
DATE OF SURVEY: APRIL, 2013

DRAWN BY: MPK CHECKED BY: GRR SHEET 1 OF 5



LINE TABLE

LINE NO.	BEARING	DISTANCE
L11	N75°36'47"E	9.04'
L12	N42°48'10"W (N43°33'38"E (S42°52'31"E	88.84' 88.83' 88.78' R-1 R-31 R-37
L13	N62°59'55"E (N62°13'41"E	44.91' 44.91' R-1
L14	N42°58'03"E (N42°10'33"E	53.10' 53.10' R-1
L15	N89°59'29"W (N89°13'02"W	69.08' 69.08' R-1
L16	N89°59'29"W (S00°44'02"E	15.04' 15.06' R-1
L17	N00°03'25"E (S00°44'02"E	11.36' 11.36' R-1
L18	S89°49'52"E (N89°22'43"E	42.71' 42.71' R-1
L19	N42°54'53"E (N42°10'33"E	33.35' 33.35' R-1
L20	N89°49'52"E (N89°22'43"E	33.88' 33.88' R-1
L21	N46°49'40"W (S47°48'27"E	6.03' 6.00' R-1



CURVE TABLE

CURVE NO.	RADIUS	ARC LENGTH	DELTA	CHORD BEARING	CHORD DISTANCE
C10	700.00' (700.00'	405.69' 405.68' R-1	33°12'22"	N70°20'53"E	400.03'
C11	700.00' (700.00'	18.86' 18.86' R-1	01°32'36" 01°32'38"	N62°58'24"E N62°10'54"E	18.86' 18.86' R-1
C12	700.00' (700.00'	112.83' 112.82' R-1	09°14'07"	N47°35'03"E	112.71'
C13	661.50' (661.50'	40.80' 40.80'	03°32'00" 03°32'00"	N60°15'33"E N69°32'56"E	40.79' 40.79' R-1
C14	661.50' (661.50'	84.57' 84.57'	07°19'29" 07°19'29"	N54°56'33"E N64°07'11"E	84.51' 84.51' R-1

MONUMENT TABLE

MONUMENT	STATION	OFFSET	DESCRIPTION AND SURVEY FROM WHICH MONUMENT WAS SET
1	"W3°30+18.81 P.O.C. "W2°134+95.91 P.O.C.	129.95' RT. 80.41' LT.	ODOT ALUM CAP (R-2)
2	"W3°30+39.79 P.O.C. "W2°134+30.79 P.O.C.	214.57' RT. 20.00' LT.	5/8" REBAR WITH BLUE PLASTIC CAP "UCPWD LS2627" (R-1)
3	"W3°30+56.20 P.O.C.	38.48' LT.	5/8" REBAR WITH BLUE PLASTIC CAP "UCPWD LS2627" (R-1)
4	"W3°30+99.37 P.O.C.	38.54' LT.	5/8" REBAR WITH BLUE PLASTIC CAP "UCPWD LS2627" (R-1)
5	"W3°31+70.34 P.O.C. "W2°136+84.45 P.O.C.	9.00' RT. 0.00'	SM COR. SEC. 19, NAIL AND WASHER STAMPED "LS 2627" (R-1)
6	"W3°31+71.38 P.O.C. "W2°136+59.97 P.O.C.	40.62' RT. 20.00' LT.	5/8" REBAR WITH BLUE PLASTIC CAP "UCPWD LS2627" (R-1)
7	"W3°31+88.90 P.O.C.	38.49' LT.	5/8" REBAR WITH BLUE PLASTIC CAP "UCPWD LS2627" (R-1)
8	"W3°32+02.66 P.O.C.	35.70' RT.	5/8" REBAR WITH BLUE PLASTIC CAP "UCPWD LS2627" (R-1)

MONUMENT TABLE (CONT.)

MONUMENT	STATION	OFFSET	DESCRIPTION AND SURVEY FROM WHICH MONUMENT WAS SET
9	"W3°32+26.61 P.O.C.	57.94' RT.	5/8" REBAR WITH BLUE PLASTIC CAP "UCPWD LS2627" (R-1)
10	"W3°32+34.69 P.O.C.	27.92' LT.	5/8" REBAR WITH BLUE PLASTIC CAP "UCPWD LS2627" (R-1)
11	"W3°35+50.04 P.O.C.	45.03' RT.	5/8" REBAR WITH BLUE PLASTIC CAP "UCPWD LS2627" (R-1)
12	"W3°36+26.10 P.O.C.	29.82' LT.	5/8" REBAR WITH YELLOW PLASTIC CAP "RSI-JAB 02796 LS" (R-3)
13	"W3°37+70.02 P.O.C.	36.02' RT.	5/8" REBAR WITH BLUE PLASTIC CAP "UCPWD LS2627" (R-1)
14	"W3°37+70.04 P.O.C.	29.99' RT.	5/8" REBAR WITH BLUE PLASTIC CAP "UCPWD LS2627" (R-1)
15	"W3°37+90.61 P.O.C.	30.03' LT.	5/8" REBAR WITH BLUE PLASTIC CAP "UCPWD LS2627" (R-1)
16	"W3°39+24.15 P.O.C.	30.00' LT.	5/8" REBAR WITH BLUE PLASTIC CAP "UCPWD LS2627" (R-1)
17	"W3°39+24.25 P.O.C.	29.73' LT.	5/8" REBAR (R-4)
18	"W3°44+76.48 P.O.C.	30.01' LT.	5/8" REBAR WITH BLUE PLASTIC CAP "UCPWD LS2627" (R-1)

MONUMENT TABLE (CONT.)

MONUMENT	STATION	OFFSET	DESCRIPTION AND SURVEY FROM WHICH MONUMENT WAS SET
19	"W3°44+76.48 P.O.C.	29.98' RT.	5/8" REBAR WITH BLUE PLASTIC CAP "UCPWD LS2627" (R-1)
84	"W2°123+11.46 P.O.C.	20.05' LT.	5/8" REBAR WITH YELLOW PLASTIC CAP "OR PLS 1106 MA PLS 17372" (R-31)
85	"W2°123+58.89 P.O.C.	17.41' RT.	5/8" REBAR (R-33)
86	"W2°123+63.31 P.O.C.	20.00' RT.	5/8" REBAR WITH YELLOW PLASTIC CAP "W.R. WELLS PLS 1106" (R-32)
87	"W2°129+91.08 P.O.C.	20.11' RT.	1" DISK WITH PUNCH MARKED "SURVEY MARKER" FLUSH WITH PAVEMENT (ORIGIN UNKNOWN)
88	"W2°132+95.39 P.O.C.	19.84' RT.	5/8" REBAR (R-33)
89	"W2°134+64.97 P.O.C.	19.87' RT.	5/8" REBAR (R-34)
90	"W3°20+94.60 P.O.C.	69.74' RT.	5/8" IRON PIN WITH ALUMINUM CAP (R-2)
91	"W3°20+94.67 P.O.C.	80.15' LT.	5/8" IRON PIN WITH ALUMINUM CAP (R-2)

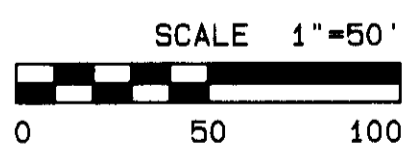
UMATILLA COUNTY ROAD DEPARTMENT
 3920 WESTGATE
 PENDELTON, OR 97801

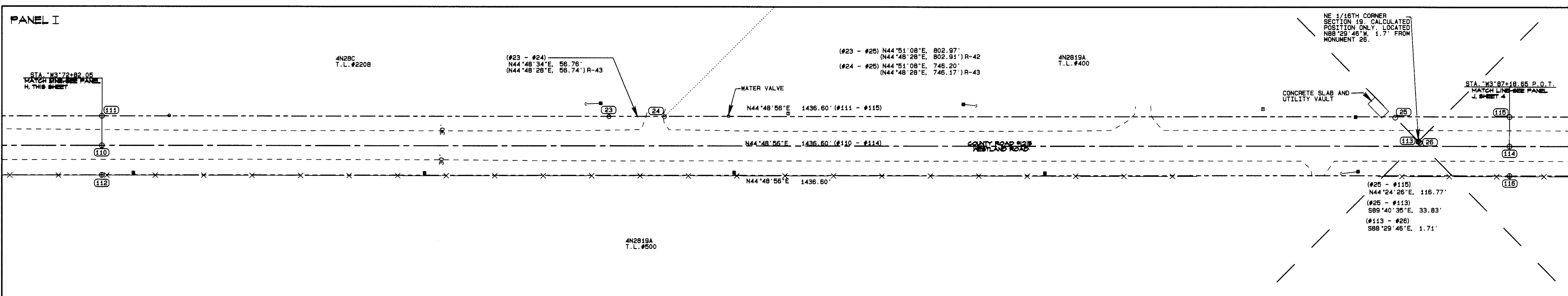
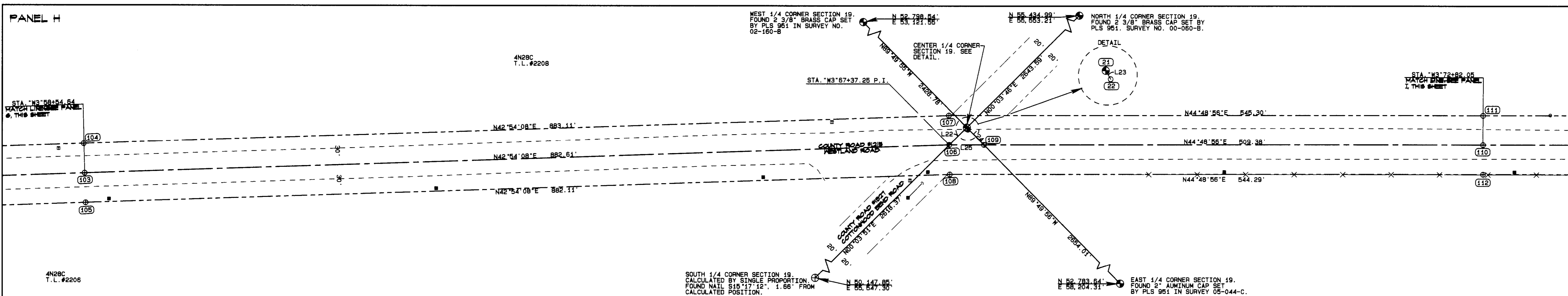
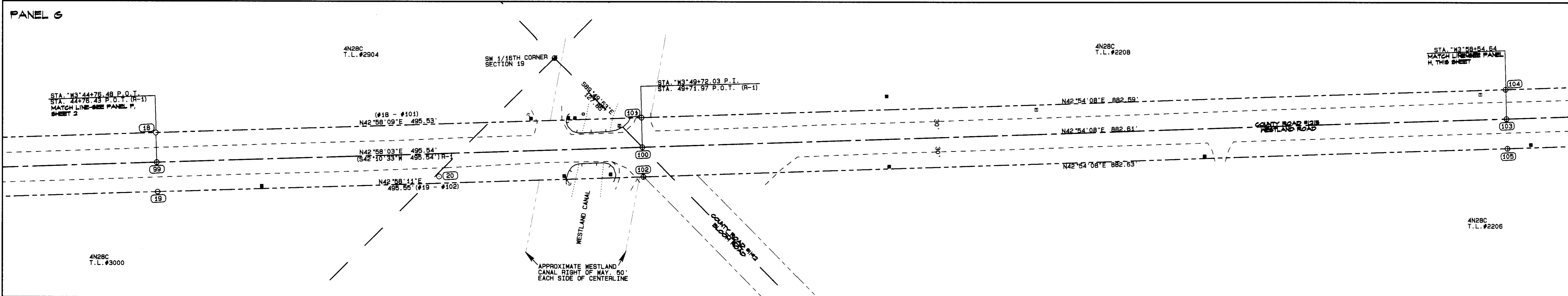
LEGALIZATION SURVEY FOR COUNTY ROAD #1218
 WESTLAND ROAD
 LOCATED IN SECTIONS 17, 18, 19, 20 & 30
 TOWNSHIP 4 NORTH RANGE 28 EAST, WM.
 AND
 SECTIONS 24 & 25 TOWNSHIP 4 NORTH
 RANGE 27 EAST, WM.

DATE OF SURVEY: APRIL, 2013
 DRAWN BY: MPK CHECKED BY: GRR SHEET 2 OF 5

REGISTERED PROFESSIONAL
 LAND SURVEYOR
 Jay R. Tolva
 OREGON
 JUL 20, 1983
 GARY R. ROBERTS
 2627
 RENEWS 12/31/2014

RECEIVED BY
 Umatilla County Surveyor
 Date: 3/19/2014
 Rec'd By: G. Hensley
 No.: 14-025-C





MONUMENT TABLE

MONUMENT	STATION	OFFSET	DESCRIPTION AND SURVEY FROM WHICH MONUMENT WAS SET
18	W3'44+76.48 P.O.T.	30.01' LT.	5/8" REBAR WITH BLUE PLASTIC CAP "UCPMD L92627" (R-1)
19	W3'44+76.49 P.O.T.	29.98' RT.	5/8" REBAR WITH BLUE PLASTIC CAP "UCPMD L92627" (R-1)
20	W3'47+63.61 P.O.T.	23.13' RT.	5/8" REBAR (R-5)
21	W3'67+55.18 P.O.T.	17.69' LT.	CENTER 1/4 CORNER SECTION 19. 5/8" REBAR WITH YELLOW PLASTIC CAP "951" (R-6)
22	W3'67+56.32 P.O.T.	15.71' LT.	STAEBLER'S CENTER 1/4 CORNER SECTION 19 (NOT USED). 5/8" IRON ROD (R-7)
23	W3'77+98.92 P.O.T.	29.68' LT.	5/8" REBAR WITH YELLOW PLASTIC CAP "951" (R-42)
24	W3'78+55.68 P.O.T.	29.69' LT.	5/8" REBAR WITH YELLOW PLASTIC CAP "951" (R-43)
25	W3'86+01.98 P.O.T.	29.17' LT.	5/8" REBAR, BENT (R-42)
26	W3'86+26.76 P.O.T.	3.79' LT.	STAEBLER'S NE 1/16TH CORNER SECTION 19 (NOT USED). 5/8" IRON ROD (R-7)

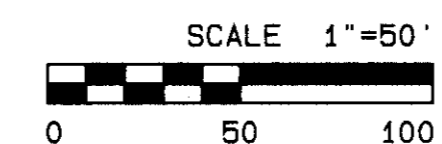
LINE TABLE

LINE NO.	BEARING	DISTANCE
L22	S00°12'17"N	25.18'
L23	S75°16'55"E	2.28'
L24	S89°51'15"E	24.87'
L25	N44°48'56"E	35.41'

RECEIVED BY

Umatilla County Surveyor
 Date: 3/19/2014
 Rec'd By: *Chenley*
 No.: 14-025-C

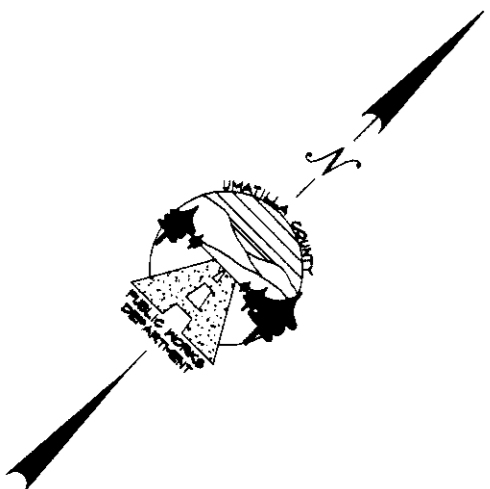
*SEE INDEX SHEET FOR COORDINATES OF CALCULATED POINTS AND FOUND MONUMENTS. NARRATIVE, LEGEND, SURVEY RECORDS, AND DEED RECORDS.

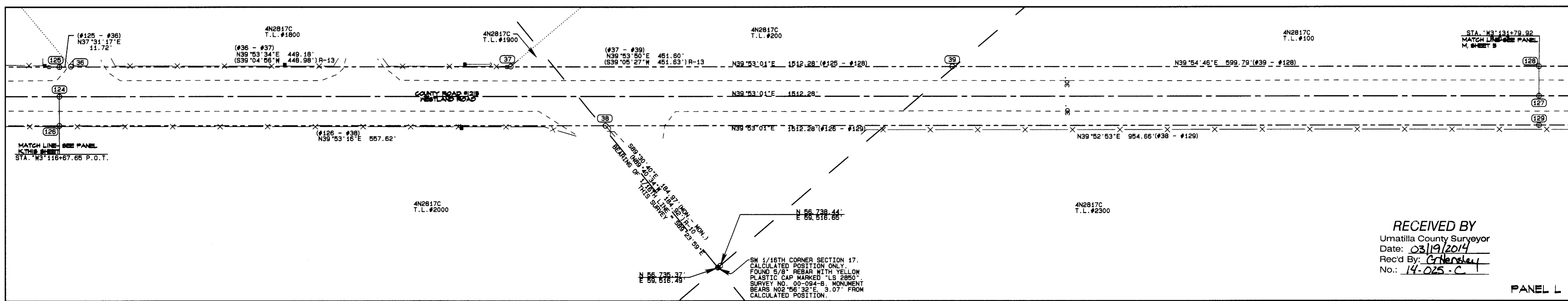
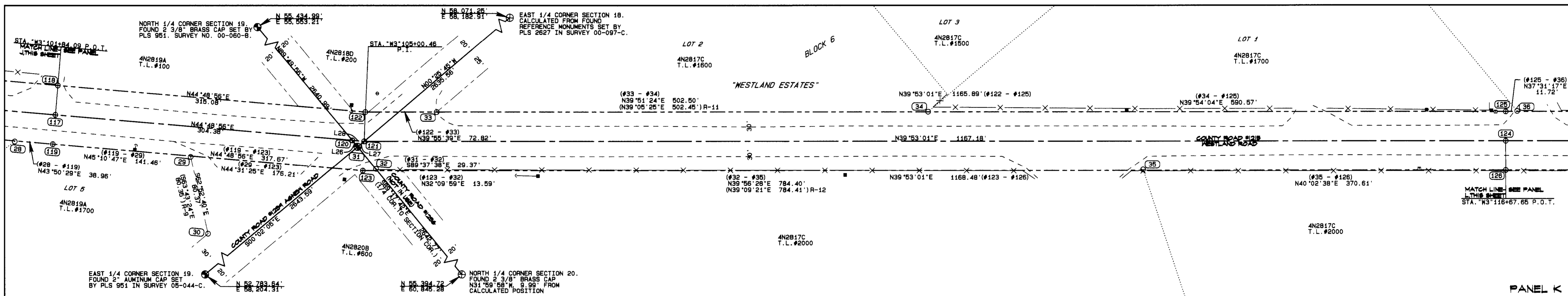
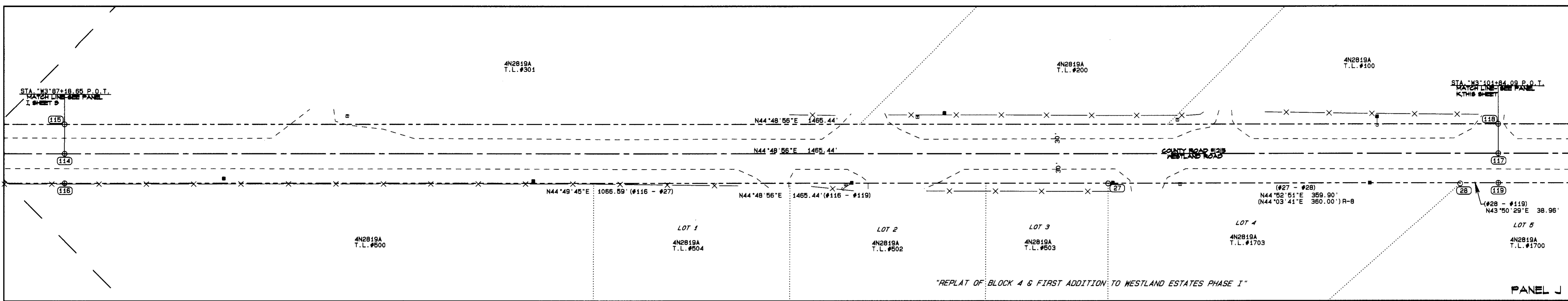


REGISTERED PROFESSIONAL LAND SURVEYOR
Gary R. Roberts
 GARY R. ROBERTS
 2627
 OREGON
 JUL 20 1993
 RENEWS 12/31/2014

UMATILLA COUNTY ROAD DEPARTMENT
3920 WESTGATE
PENDLETON, OR 97801

LEGALIZATION SURVEY FOR COUNTY ROAD #1215 WESTLAND ROAD
 LOCATED IN SECTIONS 17, 18, 19, 20 & 30 TOWNSHIP 4 NORTH RANGE 28 EAST, WM.
 AND SECTIONS 24 & 25 TOWNSHIP 4 NORTH RANGE 27 EAST, WM.
 DATE OF SURVEY: APRIL, 2013
 DRAWN BY: MPK CHECKED BY: GRR SHEET 3 OF 5

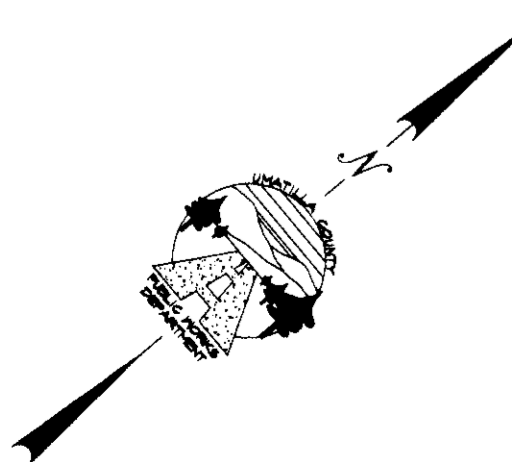




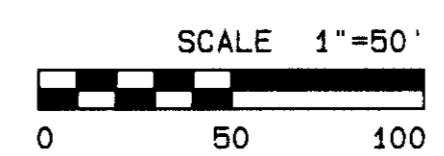
MONUMENT	STATION	OFFSET	DESCRIPTION AND SURVEY FROM WHICH MONUMENT WAS SET
26	"W3°86+26.76 P.O.T.	3.79' LT.	STAEBLER'S NE 1/16TH CORNER SECTION 19 (NOT USED), 5/8" IRON ROD (R-7)
27	"W3°97+85.23 P.O.T.	30.25' RT.	5/8" REBAR WITH YELLOW PLASTIC CAP "L.S. #2431" (R-8)
28	"W3°101+45.13 P.O.T.	30.66' RT.	5/8" REBAR WITH YELLOW PLASTIC CAP "L.S. #2431" (R-8)
29	"W3°103+25.54 P.O.T.	30.90' RT.	5/8" REBAR WITH YELLOW PLASTIC CAP "UMA. CO. RD. LS 2627" (R-9)
30	"W3°103+49.97 P.O.T.	107.47' RT.	5/8" REBAR WITH YELLOW PLASTIC CAP "UMA. CO. RD. LS 2627" (R-9)
31	"W3°104+94.45 P.O.T.	6.06' RT.	NE CORNER OF SECTION 19. 2" IRON PIPE WITH NAIL IN THE CENTER (R-7)
32	"W3°105+12.64 P.O.T.	28.17' RT.	5/8" REBAR WITH YELLOW PLASTIC CAP "LS 2850" (R-10)
33	"W3°105+74.58 P.O.T.	29.94' LT.	2" IRON PIPE (R-11)
34	"W3°110+77.08 P.O.T.	30.18' LT.	1" IRON ROD (R-11)

MONUMENT	STATION	OFFSET	DESCRIPTION AND SURVEY FROM WHICH MONUMENT WAS SET
35	"W3°112+97.04 P.O.T.	28.96' RT.	5/8" REBAR WITH YELLOW PLASTIC CAP "951" (R-12)
36	"W3°116+79.35 P.O.T.	30.48' LT.	5/8" REBAR WITH YELLOW PLASTIC CAP "951" (NOT RECORDED)
37	"W3°121+28.53 P.O.T.	30.41' LT.	5/8" REBAR WITH YELLOW PLASTIC CAP "951" (NOT RECORDED)
38	"W3°122+25.26 P.O.T.	30.04' RT.	5/8" REBAR WITH YELLOW PLASTIC CAP "LS 2850" (R-10)
39	"W3°125+80.14 P.O.T.	30.30' LT.	5/8" REBAR WITH YELLOW PLASTIC CAP "951" (R-13)

LINE NO.	BEARING	DISTANCE
L26	N89°49'56"W	8.52'
L27	N00°25'45"W	8.53'
L28	N44°48'56"E	11.99'



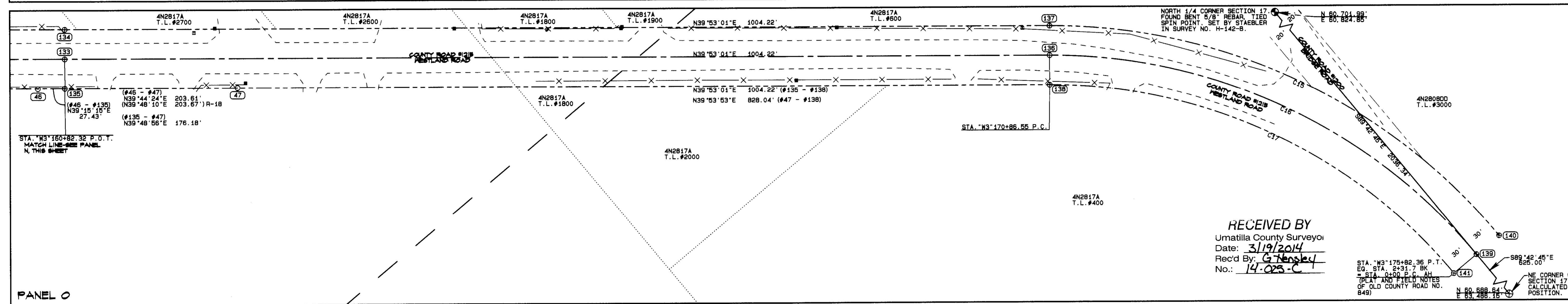
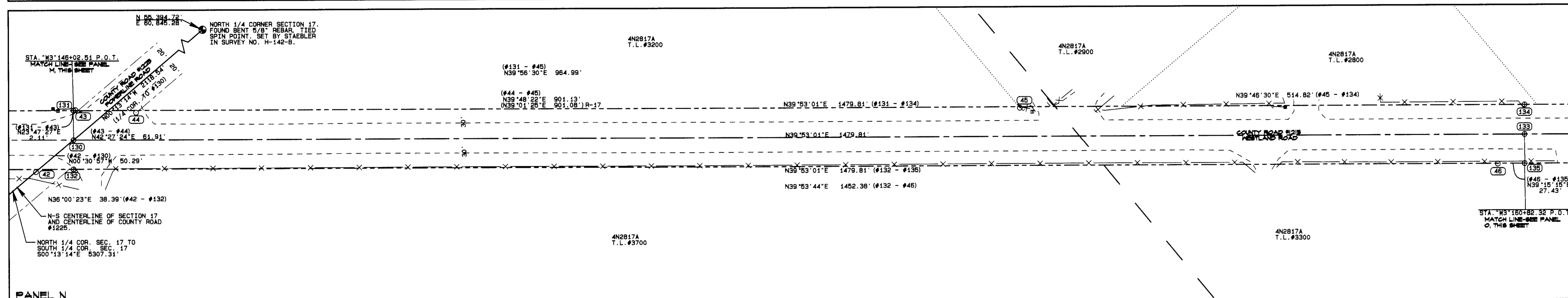
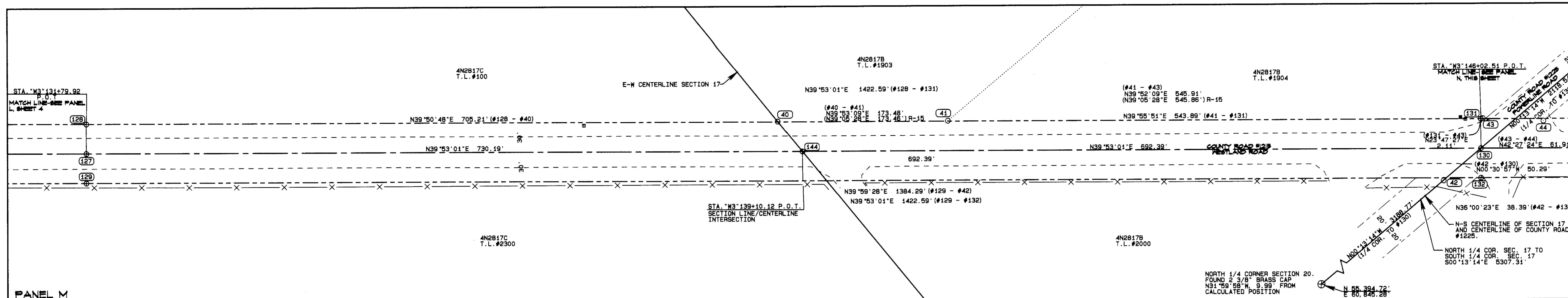
*SEE INDEX SHEET FOR COORDINATES OF CALCULATED POINTS AND FOUND MONUMENTS, NARRATIVE LEGEND, SURVEY RECORDS, AND DEED RECORDS.



REGISTERED PROFESSIONAL LAND SURVEYOR
 GARY R. ROBERTS
 JULY 20, 1993
 2627
 RENEWS 12/31/2014

RECEIVED BY
 Umatilla County Surveyor
 Date: 03/19/2014
 Recd By: G. Hensley
 No.: 14-025-C

UMATILLA COUNTY ROAD DEPARTMENT
 3920 WESTGATE
 PENDLETON, OR 97801
 LEGALIZATION SURVEY FOR COUNTY ROAD #1215
 WESTLAND ROAD
 LOCATED IN SECTIONS 17, 18, 19, 20 & 30
 TOWNSHIP 4 NORTH RANGE 28 EAST, WM.
 AND
 SECTIONS 24 & 25 TOWNSHIP 4 NORTH
 RANGE 27 EAST, WM.
 DATE OF SURVEY: APRIL, 2013
 DRAWN BY: MPK CHECKED BY: GRR SHEET 4 OF 5



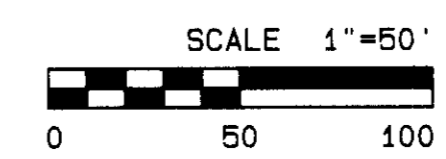
MONUMENT TABLE

MONUMENT	STATION	OFFSET	DESCRIPTION AND SURVEY FROM WHICH MONUMENT WAS SET
40	"W3"138+85.14 P.O.T.	30.45' LT.	5/8" REBAR WITH YELLOW PLASTIC CAP "951" (R-14)
41	"W3"140+58.62 P.O.T.	30.45' LT.	5/8" REBAR WITH YELLOW PLASTIC CAP "951" (R-15)
42	"W3"145+64.21 P.O.T.	32.60' RT.	5/8" REBAR WITH ALUMINUM CAP, BENT (R-16)
43	"W3"146+04.53 P.O.T.	30.58' LT.	5/8" REBAR WITH YELLOW PLASTIC CAP "951" (R-16)
44	"W3"146+66.38 P.O.T.	27.81' LT.	5/8" REBAR WITH YELLOW PLASTIC CAP "RS1-GBW 02817LS" (R-17)
45	"W3"155+67.50 P.O.T.	29.02' LT.	5/8" REBAR WITH YELLOW PLASTIC CAP "RS1-GBW 02817LS" (R-17)
46	"W3"160+54.89 P.O.T.	30.30' RT.	5/8" REBAR WITH YELLOW PLASTIC CAP "951" (R-18)
47	"W3"162+58.49 P.O.T.	29.79' RT.	5/8" REBAR WITH YELLOW PLASTIC CAP "951" (R-18)

CURVE TABLE

CURVE NO.	RADIUS	ARC LENGTH	DELTA	CHORD BEARING	CHORD DISTANCE
C15	593.61'	522.21'	50°24'15"	N65°05'09"E	505.54'
C16	563.61'	495.82'	50°24'15"	N65°05'09"E	479.99'
C17	533.61'	469.43'	50°24'15"	N65°05'09"E	454.44'

*SEE INDEX SHEET FOR COORDINATES OF CALCULATED POINTS AND FOUND MONUMENTS, NARRATIVE LEGEND, SURVEY RECORDS, AND DEED RECORDS.



RECEIVED BY
Umatilla County Surveyor
Date: 3/19/2014
Rec'd By: G. Hensley
No.: 14-025-C

REGISTERED PROFESSIONAL LAND SURVEYOR
JAY R. HENSLY
OREGON
JULY 20, 1993
GARY R. ROBERTS
2627
RENEWS 12/31/2014

UMATILLA COUNTY ROAD DEPARTMENT
3920 WESTGATE
PENDLETON, OR 97001
LEGALIZATION SURVEY FOR COUNTY ROAD #1215 WESTLAND ROAD
LOCATED IN SECTIONS 17, 18, 19, 20 & 30 TOWNSHIP 4 NORTH RANGE 28 EAST, WM. AND SECTIONS 24 & 25 TOWNSHIP 4 NORTH RANGE 27 EAST, WM.
DATE OF SURVEY: APRIL, 2013
DRAWN BY: MPK CHECKED BY: GRR SHEET 5 OF 5

