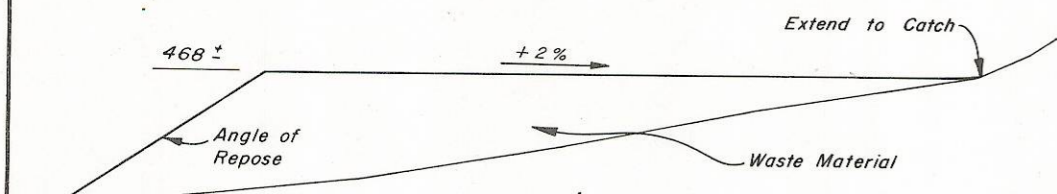
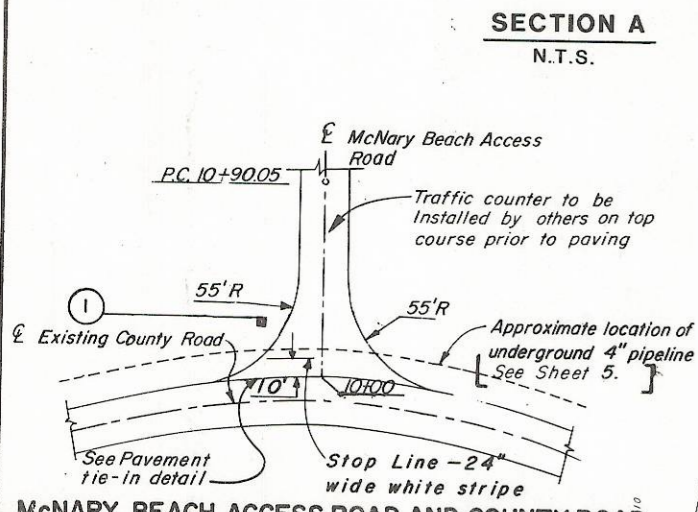


SIGN NUMBER	STATION L OR R	SIGN CODE	
		CONTROL	GUIDE
1	10+30 L	R1-1	W13-1 (25 MPH)
2	17+50 R	WT-3L	(25 MPH)
3	22+50 R	R2-1	(15 MPH)
4	36+40 L	WT-3L	W13-1 (25)
5	35+10 L	R1-1	

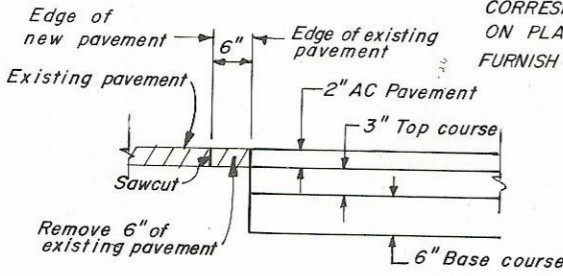
[NOTE: SIGNS WILL BE GOVERNMENT FURNISHED AND NUMBERED TO CORRESPOND WITH NUMBERS ON PLAN. CONTRACTOR SHALL FURNISH POSTS AND HARDWARE.]



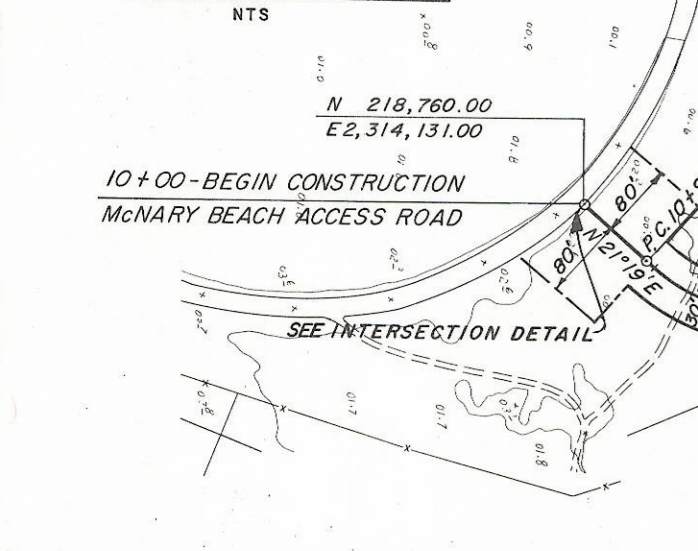
SECTION A
N.T.S.



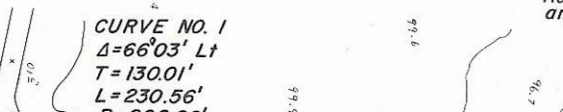
McNARY BEACH ACCESS ROAD AND COUNTY ROAD NO. 625 INTERSECTION INTERSECTION DETAIL
NTS



PAVEMENT TIE-IN DETAIL
NOT TO SCALE



10+00-BEGIN CONSTRUCTION McNARY BEACH ACCESS ROAD



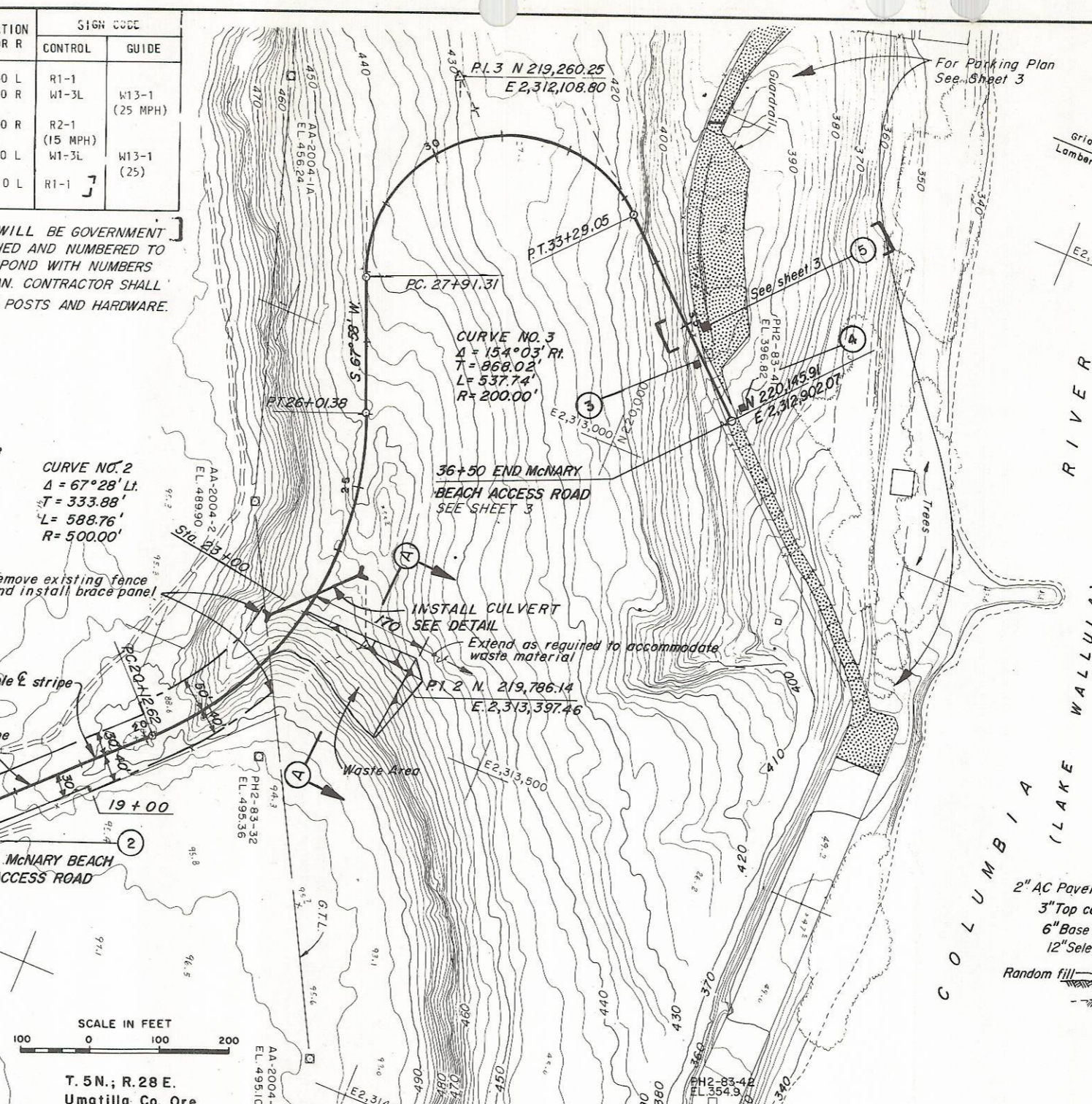
CURVE NO. 1



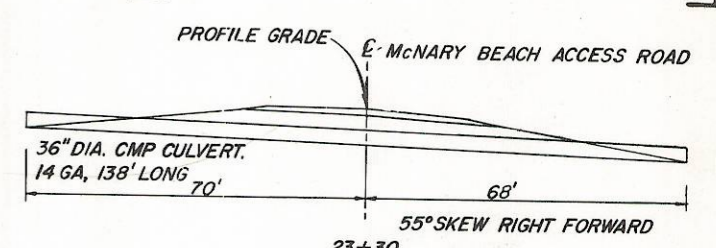
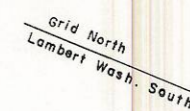
CURVE NO. 2



CURVE NO. 3

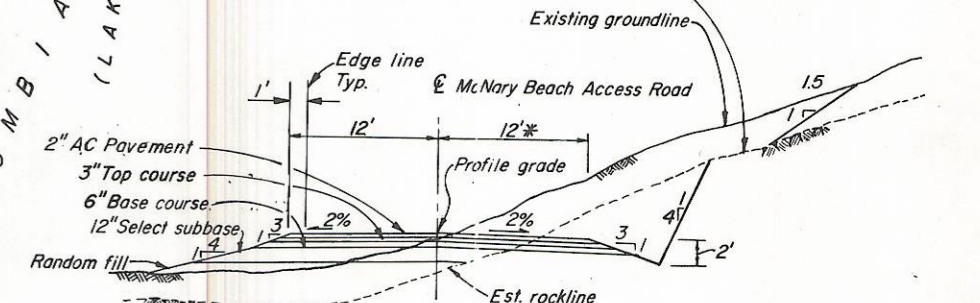


SCALE IN FEET
100 0 100 200
T. 5N.; R. 28 E.
Umatilla Co. Ore.



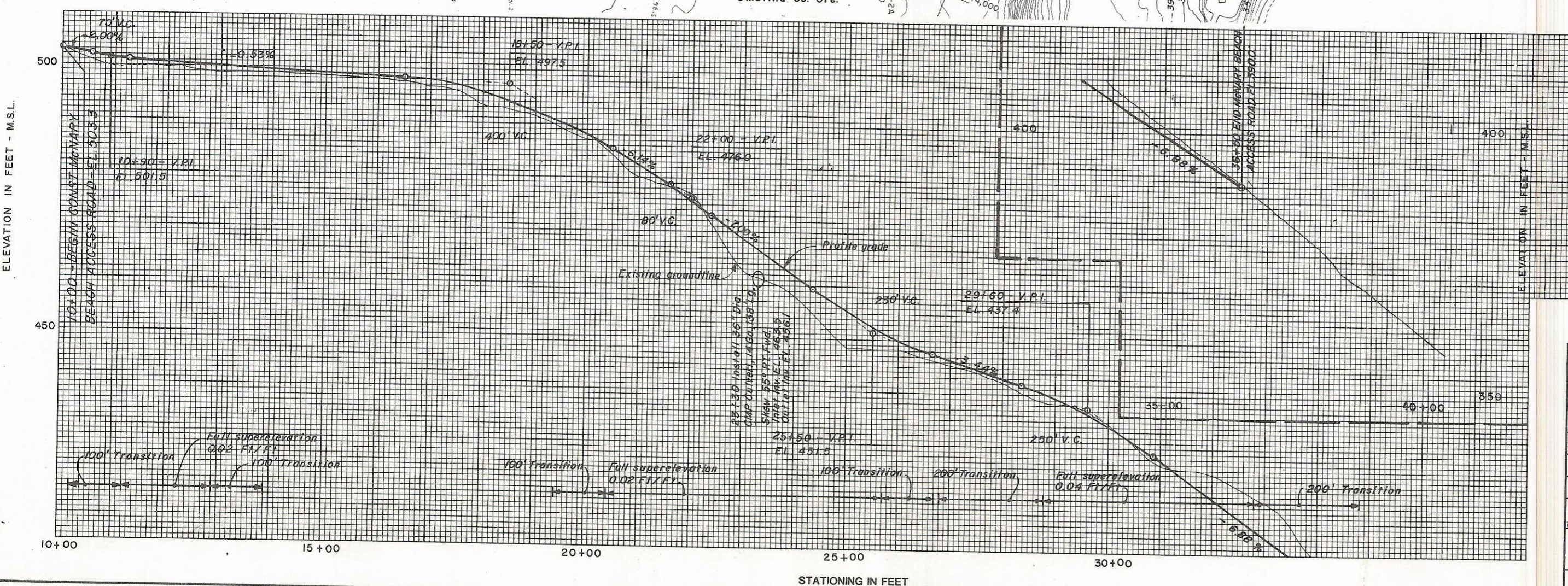
CULVERT DETAIL
20 0 20 40

LEGEND
PAVEMENT OVERLAY, SEE DETAIL SHEET 3.
SIGN NUMBER - SEE SPECS. FOR SIGN INSTALLATION DETAIL



TYPICAL SECTION
NTS

*Widen to 18' from Sta. 27+91.31 to 33+29.05. Transition 50' at the beginning and ending of roadway widening.
*Widen to 35' at Sta. 35+50. Transition 70' at the beginning and 41' at the ending of the roadway widening.



METHOD FOR SUPERELEVATING THE ROADWAY

S=0.02	S=0.02	P.C. - 1/2 Trans. Lg. Normal Crown
S=0.00	S=0.02	P.C.
Full Super	Full Super	P.C. + 1/2 Trans. Lg.
Full Super	Full Super	P.T. - 1/2 Trans. Lg.
S=0.00	S=0.02	P.T.
S=0.02	S=0.02	P.T. + 1/2 Trans. Lg. Normal Crown

NOTE: Reverse slope direction for curve left.

REVISION	DATE	DESCRIPTION	BY
A	85 Aug 02	Misc. revisions.	

U. S. ARMY ENGINEER DISTRICT
WALLA WALLA, WASHINGTON

McNARY LOCK AND DAM (LAKE WALLULA)
COLUMBIA RIVER, OREGON AND WASHINGTON
BEACH ACCESS ROAD AND BEACH AREA PAVING PLAN, PROFILE, SECTION AND DETAILS

DESIGNED: R. Harwood
DRAWN: E. Johnson
CHECKED: D. Knudson
SUPERVISED: [Signature]
SUBMITTED: [Signature]
RECOMMENDED: [Signature]
CHIEF, ENGINEERING DIVISION

APPROVED: [Signature]
DATE: 85 JUNE 28
COLONEL, U. S. DISTRICT ENGINEER
SCALE AS SHOWN INV. NO. ENG. 85-B-54
FILE NO.
SHEET 2 MDG-1-0-9/38