

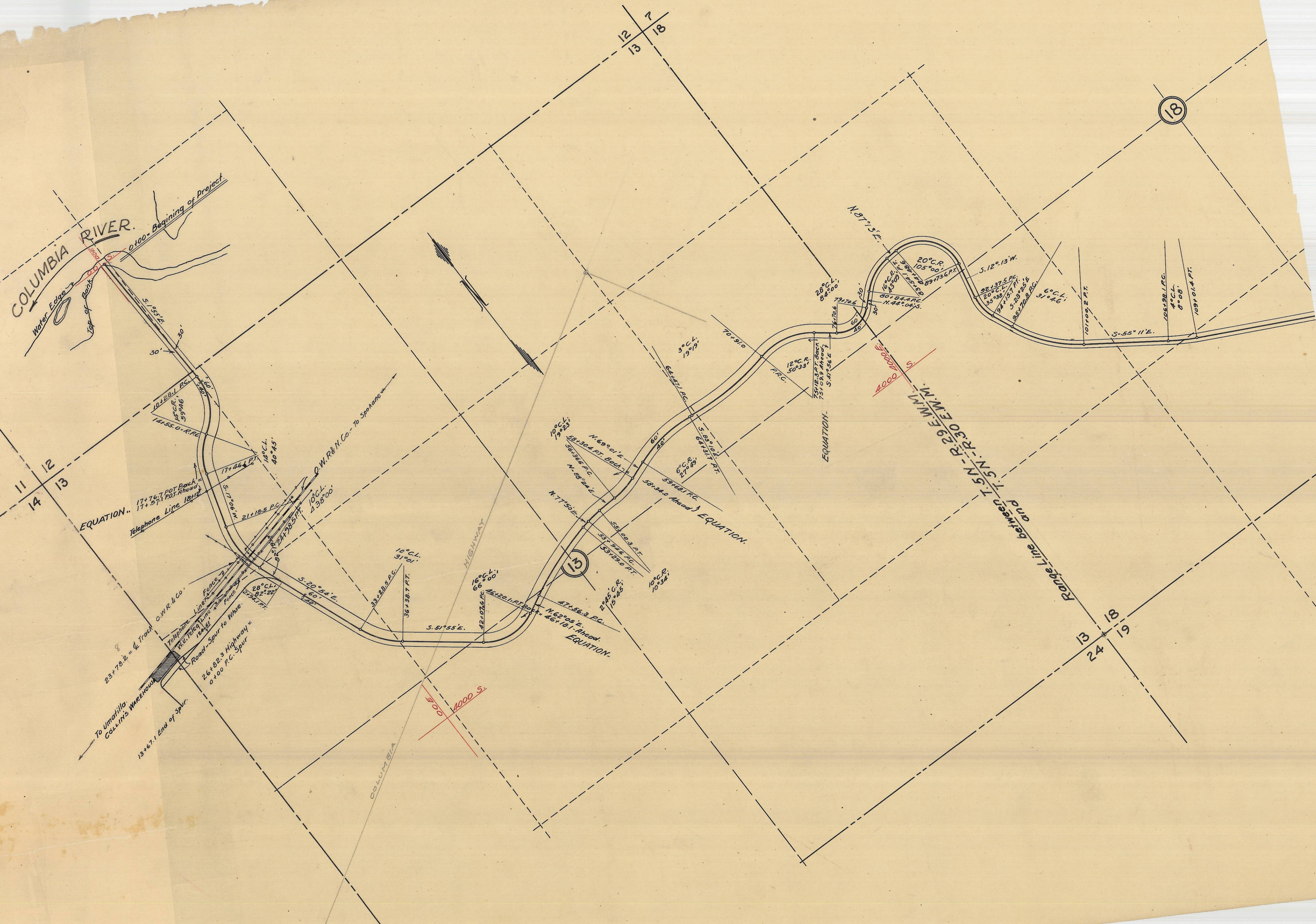
UMATILLA COUNTY
 ROADMASTER'S OFFICE.
COLD SPRINGS - HARP'S RANCH.
 CONSTRUCTED LINE.

Scale 1 inch = 400 feet.
 Dec. 1923.

Cold Springs to Harp's Ranch 19.20 miles
 Harp's Ranch 2.01 or 30.2 miles.

Box 11

1/2 mi. - Tam & 1000' Sta. on 3F-7-16
 Holdman - Harp's detail.
 1923 - 1924



COLD SPRINGS TO HARP'S RANCH