

UMATILLA COUNTY ROAD DEPT.  
**ECHO~UMATILLA HWY.**  
 Sec 9 T.3N. R.29 E.W.M.  
 Scale 1"=400'  
 Traced Dec. 19, 1958

ECHO - UMATILLA HWY. DISTRICT

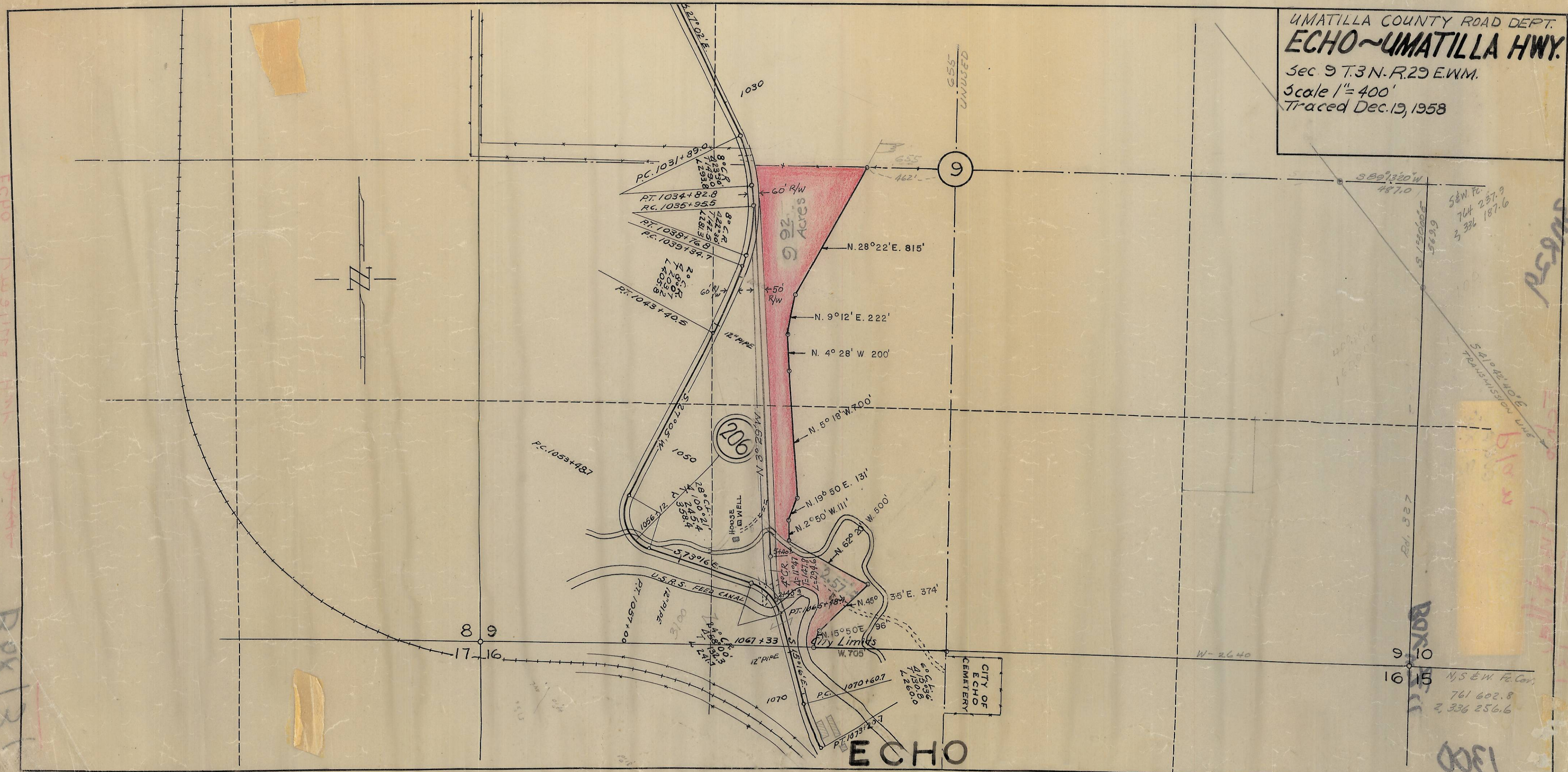
R2929

S 24° 42' 40" E  
 TRANSMISSION LINE

BOX 131

N. 5 E.W. Co. Cor.  
 761 602.8  
 2, 336 256.6

1300



**ECHO**

CITY OF  
 ECHO  
 CEMETERY

8 9

9 10  
 16 15

9

206

1067+33

1070+60.7

P.C. 1031+89.0

P.T. 1034+82.8

P.C. 1035+95.5

P.T. 1038+76.8

P.C. 1039+34.7

P.T. 1043+40.5

P.C. 1055+48.7

P.T. 1057+00

P.C. 1065+78.7

P.T. 1065+78.7

P.C. 1070+60.7

P.T. 1073+20.7

P.C. 1073+20.7

P.T. 1073+20.7

P.C. 1073+20.7

P.T. 1073+20.7

P.C. 1073+20.7