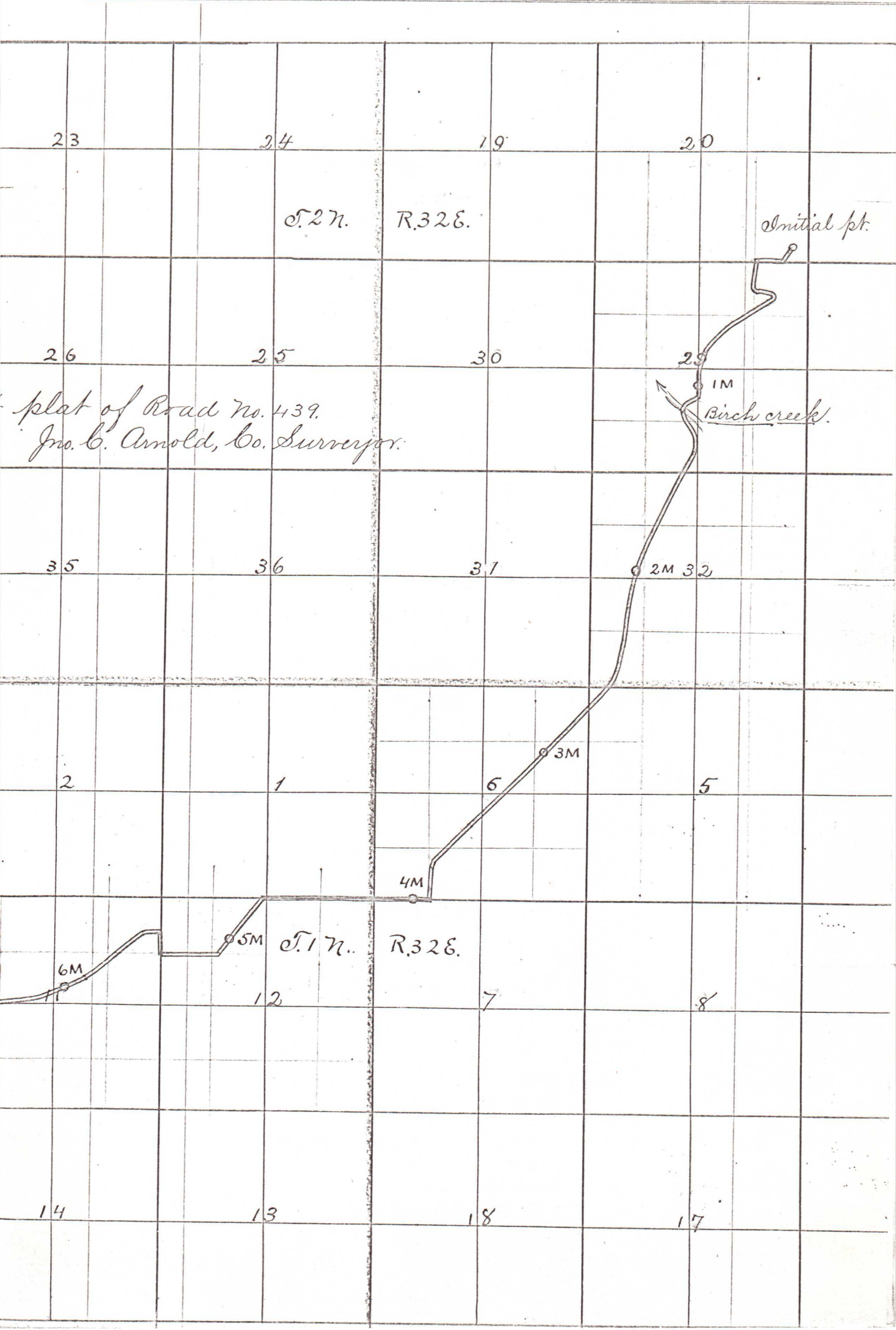


439

ad no. 439



S. 27. R. 32 E.

Initial pt.

plat of Road No. 439.
Jno. C. Arnold, Co. Surveyor.

Birch creek.

S. 17. R. 32 E.

Plat of County R

19

20

21

22

T. 27. R. 31 E.

30

29

28

27

I hereby certify the following to be a correct

31

32

33

34

6

5

4

3

T. 17. R. 31 E.

7

8

9

10

Terminus

10M

9M

8M

7M

18

17.

16

15