

BK 14 P. 04 193

SURVEYOR'S CERTIFICATE

FACE SHEET & INDEX PAGE
SUBDIVISION PLAT # _____, SHEET 1 OF 3

I, Douglas M. Ferguson, Professional Land Surveyor registered in the State of Oregon, hereby certify that I have surveyed and monumented the parcels as shown on this subdivision plat in accordance with O.R.S. 92, the exterior boundary of which is referenced to Umatilla County Map of Survey No. 98-176-C, and Umatilla County Deed Reel 222, page 317, more particularly described as follows:

Commencing at the 1/4 corner common to Sections 8 and 9, T.3N., R.29E., W.M., said point being marked with a galv. iron pipe with a 2-1/4" Brass Cap,

Thence S00°22'09"W along the east line of said Section 8, 15.00 ft. to the TRUE POINT OF BEGINNING, said point being designated as the INITIAL POINT for the Echo Heights Subdivision and is marked with a 5/8"x30" iron pin with a 1-1/2" aluminum capped stamped "INITIAL POINT, ECHO HEIGHTS, 2000, PLS 848";

Thence S00°22'09"W along the east line of said Section 8, 1148.88 ft. to a 5/8" iron pin with yellow plastic cap marked "OR PLS 1106 WA PLS 17372" (referred to hereafter as PLS 1106 pin, see Umatilla County Map of Survey No. 98-176-C);

Thence along a 72.50 ft. radius curve left, 193.88 ft.(the long chord of which bears S49°28'32"E, 141.06 ft.) to a PLS 1106 pin;

Thence S27°06'03"W, 63.13 ft. to a 5/8"x30" iron pin with a yellow plastic cap marked "PLS 848" set this survey(referred to hereafter as a DFSE pin);

Thence S30°38'43"W, 89.24 ft. to a DFSE pin;

Thence S36°54'15"W, 74.71 ft. to a DFSE pin;

Thence S36°54'15"W, 23.38 ft. to a DFSE pin;

Thence S25°01'41"W, 80.40 ft. to a DFSE pin;

Thence S15°28'39"W, 144.87 ft. to a PLS 1106 pin;

Thence S12°44'45"W, 231.12 ft. to a DFSE pin;

Thence S23°19'55"W, 166.14 ft. to a DFSE pin;

Thence S31°58'47"W, 108.68 ft. to a DFSE pin;

Thence S36°57'26"W, 99.05 ft. to a DFSE pin;

Thence S28°13'55"W, 45.85 ft. to a PLS 1106 pin;

Thence along a 22.00 ft. radius curve left, 26.07 ft.(the long chord of which bears S05°42'50"E, 24.57 ft.) to a PLS 1106 pin;

Thence S39°38'36"E, 14.03 ft. to a PLS 1106 pin;

Thence along an 80.00 radius curve left, 65.34 ft.(the long chord of which bears S63°03'36"E, 63.54 ft.) to a PLS 1106 pin;

Thence S86°27'35"E, 56.17 ft. to a DFSE pin;

Thence S89°31'50"E, 94.69 ft. to a DFSE pin;

Thence N83°01'50"E, 109.38 ft. a point on the East line of said Section 8, said point being South 2285.24 ft. and West 14.73 ft. from the said 1/4 corner common to Sections 8 & 9, said point marked with a DFSE pin;

Thence N83°01'50"E, 23.19 ft. to a PLS 1106 pin;

Thence along a 115.00 ft. radius curve left, 70.70 ft.(the long chord of which bears N65°25'02"E, 69.60 ft.) to a PLS 1106 pin;

Thence N47°48'14"E, 37.66 ft. to a DFSE pin;

Thence N37°44'48"E, 27.42 ft. to a DFSE pin;

Thence N23°23'10"E, 105.73 ft. to a DFSE pin;

Thence N31°24'11"E, 56.23 ft. to a DFSE pin;

Thence N36°38'26"E, 69.67 ft. to a DFSE pin;

Thence N22°53'34"E, 116.92 ft. to a DFSE pin;

Thence N30°46'54"E, 71.19 ft. to a DFSE pin;

Thence N29°53'54"E, 105.76 ft. to a DFSE pin;

Thence N45°19'38"E, 128.26 ft. to a DFSE pin;

Thence N40°05'14"E, 98.54 ft. to a DFSE pin;

Thence N44°39'23"E, 134.74 ft. to a DFSE pin;

Thence N37°36'37"E, 75.82 ft. to a PLS 1106 pin;

Thence N44°48'17"E, 121.10 ft. to a DFSE pin;

Thence N49°34'27"E, 69.80 ft. to a DFSE pin;

Thence N45°41'38"E, 108.78 ft. to a DFSE pin;

Thence N52°44'34"E, 78.80 ft. to a DFSE pin;

Thence N53°12'21"E, 88.06 ft. to a PLS 1106 pin;

Thence along a 75.00 ft. radius right, 111.67 ft. (the long chord of which bears S84°08'17"E, 101.64 ft.) to a DFSE pin;

Thence S41°28'55"E, 17.46 ft. to a DFSE pin;

Thence S21°39'16"E, 12.46 ft. to a PLS 1106 pin;

Thence N90°00'00"E, 160.29 ft. to a PLS 1106 pin;

Thence N27°18'22"E, 217.46 ft. to a PLS 1106 pin;

Thence along a 2894.79 ft. radius left, 410.08 ft. (the long chord of which bears N23°14'52"E, 409.74 ft.) to a DFSE pin;

Thence N19°11'22"E, 57.90 ft. to a DFSE pin;

Thence along a 746.20 ft. radius left, 24.42 ft. (the long chord of which bears N19°15'07"E, 24.42 ft.) to a DFSE pin;

Thence N03°14'41"W, 252.77 ft. to a DFSE pin;

Thence S88°57'13"W, 12.54 ft. to a PLS 1106 pin;

Thence along a 886.20 ft. radius left, 9.58 ft. (the long chord of which bears N02°54'37"W, 9.58 ft.) to a PLS 1106 pin;

Thence N03°18'38"W, 112.70 ft. to a PLS 1106 pin;

Thence along a 886.20 ft. radius left, 122.46 ft. (the long chord of which bears N08°29'23"W, 122.29 ft.) to a DFSE pin;

Thence S89°44'39"W, 1523.04 ft. to the TRUE POINT OF BEGINNING.

PLAT FOR ECHO HEIGHTS SUBDIVISION LOCATED IN THE SW 1/4 OF SECTION 9 AND IN THE SE 1/4 OF SECTION 8, T.3N., R.29E., W.M. UMATILLA COUNTY, OREGON

Ferguson Surveying



P.O. Box 919, 210 E. Main
MT. Tabor, OR 97865
PHONE (541) 882-4680
FAX (541) 882-4450
EMAIL DFM@GON.COM

REGISTERED PROFESSIONAL LAND SURVEYOR

OREGON JUL 15 1988 DOUGLAS M. FERGUSON 848

RENEWAL DATE: 12/31/01

I, Douglas M. Ferguson, PLS, do hereby certify that this is a true and exact copy.

Douglas M. Ferguson, PLS

Douglas M. Ferguson, P.L.S.
President, Ferguson Surveying & Engineering

OWNER DECLARATION

Know all men by these presents that we, Paul H. and Natalie S. Lapp, have caused said lands to be surveyed and partitioned as shown herein in accordance with O.R.S. Chapter 92, subject to the following:

An easement to Pacific Telephone and Telegraph recorded in Book 261, Page 120 of the Umatilla County Deed Records;

An easement to Pacific Power and Light, recorded in Book 299, Page 558 of the Umatilla County Deed Records;

An easement to Pacific Power and Light, recorded in Book 337, Page 253 of the Umatilla County Deed Records;

Easements to U.S. Department of the Interior, Bureau of Reclamation, recorded as Document No.'s 1998-3360231 and 1999-3490881, Office of County Records, Umatilla County.

Also subject to any existing easements, water rights and road rights of way.

I hereby dedicate the streets shown herein as Joyce Way, Cutter Way and Bailey Way, and the area shown as "COMMON PROPERTY, GREENWAY" to the Homeowners Associations as defined in and subject to the "Declaration of Covenants, Conditions and Restrictions for Echo Heights" as filed with the Umatilla County Clerk in conjunction with and referenced to this plat. These street rights of way may also be used by public utilities as required and subject to the above said "Declaration". I also hereby dedicated a strip of ground lying southerly of the existing Bowman Road(County Road No. 419) right of way and a strip of ground located westerly of the existing County Road 1300 right of way, both as shown herein, to Umatilla County as Public Ways.

In recognition of an agreement with The Oregon Department of Water Resources, which states: "There are advisories of water resource issues by the Oregon Department of Water Resources that are to be recorded in the 'Deed Records', the pertinent language as recorded in the 'Declaration of Covenants, Conditions and Restrictions For Echo Heights' shall apply to all Deed transactions.

Paul H. Lapp, Owner

Natalie S. Lapp, Owner

Donna E. Branner, Santiam Properties LLC, Contract Purchaser

SUBSCRIBED AND SWORN BY ME THIS 30 DAY OF March, 2000

Notary Public for the State of Oregon, My Commission Expires 11-11-2001

TAX COLLECTOR'S CERTIFICATE

I hereby certify that All taxes for the year 99 against the property shown have been paid.

Paul Chelms to Tax Collector, Deputy Date 4/4/00

Shirley Smith, Tax Collector, Deputy Date 4-4-2000

APPROVALS

Approved this day of _____, 2000 in accordance with the Umatilla County Development Ordinance.

William F. Howard, 4/13/00, UMATILLA COUNTY BOARD OF COMMISSIONERS

Umatilla County Board of Commissioners, Date 4-11-00

KE Thompson, 4-7-2000, UMATILLA COUNTY PLANNING COMMISSION CHAIRMAN

David H. Krumben, 4-4-2000, UMATILLA COUNTY SURVEYOR



POST MONUMENTATION

I, Douglas M. Ferguson, Professional Land Surveyor registered in the State of Oregon, hereby certify that the monuments designated for post monumentation as shown herein will be set on or before August 1, 2000, in accordance with Oregon Revised Statutes.

Douglas M. Ferguson, P.L.S.

I, David H. Krumben, Umatilla County Surveyor, hereby certify that the monuments designated for post monumentation as shown herein have been set and approved by me, and that the affidavit required by O.R.S. Chapter 92.070(3b) has been recorded in the records of Umatilla County, Umatilla County Courthouse, Pendleton, Oregon, as Instrument No. _____

Date: _____ David H. Krumben, Umatilla County Surveyor

STATE OF OREGON, COUNTY OF UMATILLA } I certify that this instrument was received and recorded

ON May 9, 2000 at 3:50 o'clock P.m., in the record of PLATS of said County, BOOK 14 PAGE 04 Slide

OFFICE OF COUNTY RECORDS

By: GEORGIA DUNAWAY Records Officer

Fees \$ 50.00 No. 2000-3690560

DEVELOPERS

SANTIAM PROPERTIES, LLC, 1840 Pacific Ct., STAYTON, OR. 97383, Don Branner, Phone (503) 769-8305 Fax (503) 769-7840

PLAT FOR ECHO HEIGHTS SUBDIVISION
 LOCATED IN THE SW 1/4 OF SECTION 9 AND IN THE SE 1/4 OF SECTION 8, T.3N., R.29E., W.M. UMATILLA COUNTY, OREGON

REGISTERED PROFESSIONAL LAND SURVEYOR
 OREGON
 DOUGLAS M. FERGUSON
 848
 RENEWAL DATE: 12/31/01

STATE OF OREGON,
 COUNTY OF UMATILLA }
 I certify that this instrument was received and recorded
 ON May 9, 2000
 at 3:50 o'clock P.m., in the record of
 PLATS of said County.
 BOOK PAGE Slide
 14 04

OFFICE OF COUNTY RECORDS
 By: GEORGIA DUNAWAY Records Officer
 Fees \$ 50.00 No. 2000-3690560



P.O. Box 518, 210 E. Main
 MT. VERNON, OR 97865
 PHONE (541) 832-1250
 FAX (541) 832-4430
 EMAIL DFERGUSON@COM

Line Table

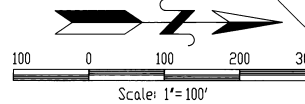
NUMBER	DIRECTION	DISTANCE
L1	N 27°08'03" E	6310
L2	S 30°38'43" W	6567
L3	S 36°54'15" W	7471
L4	S 36°54'15" W	2338
L5	N 25°01'41" E	6640
L6	S 19°29'39" W	6585
L7	S 15°28'39" W	7903
L8	N 12°44'45" E	15125
L9	N 12°44'45" E	7987
L10	S 30°38'43" W	357
L11	S 36°57'26" W	9905
L12	N 28°13'55" E	4585
L13	N 39°39'36" W	1403
L14	N 86°27'35" W	5617
L15	S 89°31'30" E	9469
L16	S 83°01'50" W	10938
L17	N 82°01'50" E	2319
L18	N 47°48'14" E	3766
L19	N 37°44'48" E	2742
L20	N 31°24'11" E	5623
L21	N 36°38'26" E	6967
L22	S 22°53'54" W	437
L23	N 22°53'54" E	11255
L24	N 30°46'54" E	7119
L25	N 29°53'54" E	6649
L26	N 29°53'54" E	3927
L27	S 40°05'14" W	5349
L28	S 40°05'14" W	4395
L29	S 44°39'23" W	7650
L30	N 44°39'23" E	5824
L31	N 37°36'37" E	7582
L32	S 44°48'17" W	3872
L33	S 44°48'17" W	8238
L34	N 44°39'23" E	6985
L35	S 45°41'38" W	2969
L36	N 45°41'38" E	7909
L37	N 52°44'34" E	7880
L38	S 53°12'21" W	3683
L39	S 53°12'21" W	3724
L40	N 44°28'55" W	1748
L41	S 21°39'16" E	1246
L42	N 90°00'00" E	4860
L43	N 90°00'00" E	4417
L44	N 27°18'22" E	8786
L45	N 27°18'22" E	13486
L46	S 27°18'22" W	2571
L47	S 05°51'13" W	8053
L48	N 03°18'38" W	3395
L49	S 03°18'38" W	7875
L50	S 88°57'13" W	1254
L51	S 19°11'22" W	5795
L52	N 90°00'00" E	16629
L53	N 90°00'00" E	6752
L57	S 19°11'22" W	936

Street Centerline Curve Table

NUMBER	DELTA ANGLE	RADIUS	ARC LENGTH	TANGENT	CHORD LENGTH	CHORD DIRECTION
C42	48°07'47"	300.00	252.01	133.98	244.66	N 24°26'03" E
C43	22°35'27"	500.00	197.14	99.87	195.87	S 37°12'13" W

Curve Table

NUMBER	DELTA ANGLE	RADIUS	ARC LENGTH	TANGENT	CHORD LENGTH	CHORD DIRECTION
C1	84°35'04"	72.50	107.03	65.95	97.57	N 83°47'00" E
C2	68°38'06"	72.50	86.85	49.49	81.75	S 07°11'00" E
C3	67°53'31"	22.00	26.07	14.81	24.57	S 05°42'50" E
C4	46°47'58"	80.00	63.34	34.62	63.54	S 69°03'36" E
C5	35°13'36"	115.00	73.70	36.51	69.60	N 53°29'28" E
C6	85°18'43"	75.00	111.67	69.10	101.64	S 84°08'17" E
C7	03°12'54"	2724.63	152.89	76.46	152.87	S 25°58'50" W
C8	04°45'02"	2724.63	225.91	113.02	225.85	N 21°59'30" W
C9	02°21'26"	2724.63	112.09	56.05	112.08	S 18°26'38" W
C10	08°53'28"	686.20	106.48	53.35	106.38	N 12°07'46" E
C11	03°29'00"	686.20	41.52	20.76	41.51	S 05°57'00" E
C12	00°48'01"	686.20	9.58	4.79	9.58	S 02°54'37" E
C13	07°39'30"	686.20	91.78	45.96	91.72	N 07°08'33" W
C14	90°37'30"	30.00	47.45	30.33	42.66	N 44°56'36" W
C15	89°22'30"	30.00	46.80	29.67	42.19	N 45°02'24" E
C16	143°07'49"	50.00	124.90	150.00	94.87	S 18°09'56" E
C17	73°51'24"	50.00	64.45	37.58	60.88	S 23°26'27" E
C18	69°16'24"	50.00	60.45	34.54	56.84	N 18°07'27" W
C19	90°37'30"	30.00	47.45	30.33	42.66	S 44°56'36" E
C20	89°22'30"	30.00	46.80	29.67	42.19	S 45°03'24" W
C21	11°18'49"	270.00	53.31	26.74	53.23	N 06°01'34" E
C27	17°52'47"	330.00	102.98	51.91	102.36	N 09°18'38" E
C28	22°44'59"	330.00	131.03	66.39	130.17	S 29°07'25" W
C29	36°48'58"	270.00	173.49	89.86	170.52	S 30°05'27" W
C30	07°30'00"	330.00	43.20	21.63	43.17	S 44°44'56" E
C31	06°52'28"	530.00	63.59	31.83	63.55	N 45°03'43" E
C32	01°31'05"	470.00	12.45	6.23	12.45	N 47°44'24" E
C33	29°49'28"	470.00	172.86	87.42	171.89	S 30°04'24" W
C34	15°42'59"	330.00	145.38	73.15	144.92	S 22°14'52" E
C35	00°32'52"	50.00	70.29	42.36	64.64	S 38°45'52" E
C36	106°24'18"	50.00	92.86	66.84	80.08	S 54°42'42" E
C37	99°18'27"	50.00	86.66	58.86	76.21	S 22°23'46" W
C38	101°32'29"	686.20	122.46	61.29	122.29	S 08°29'29" E
C39	01°52'01"	746.20	24.42	12.21	24.42	S 01°52'01" E
C40	08°07'00"	2894.79	410.08	205.39	405.74	S 23°14'52" E
C41	153°31'01"	72.50	193.88	304.55	141.06	N 49°28'22" W
C44	02°33'40"	686.20	30.67	15.34	30.67	S 12°19'30" E
C45	10°19'22"	2724.63	490.89	246.11	490.23	S 22°23'36" W
C46	12°21'27"	686.20	148.00	74.29	147.71	S 10°23'46" W

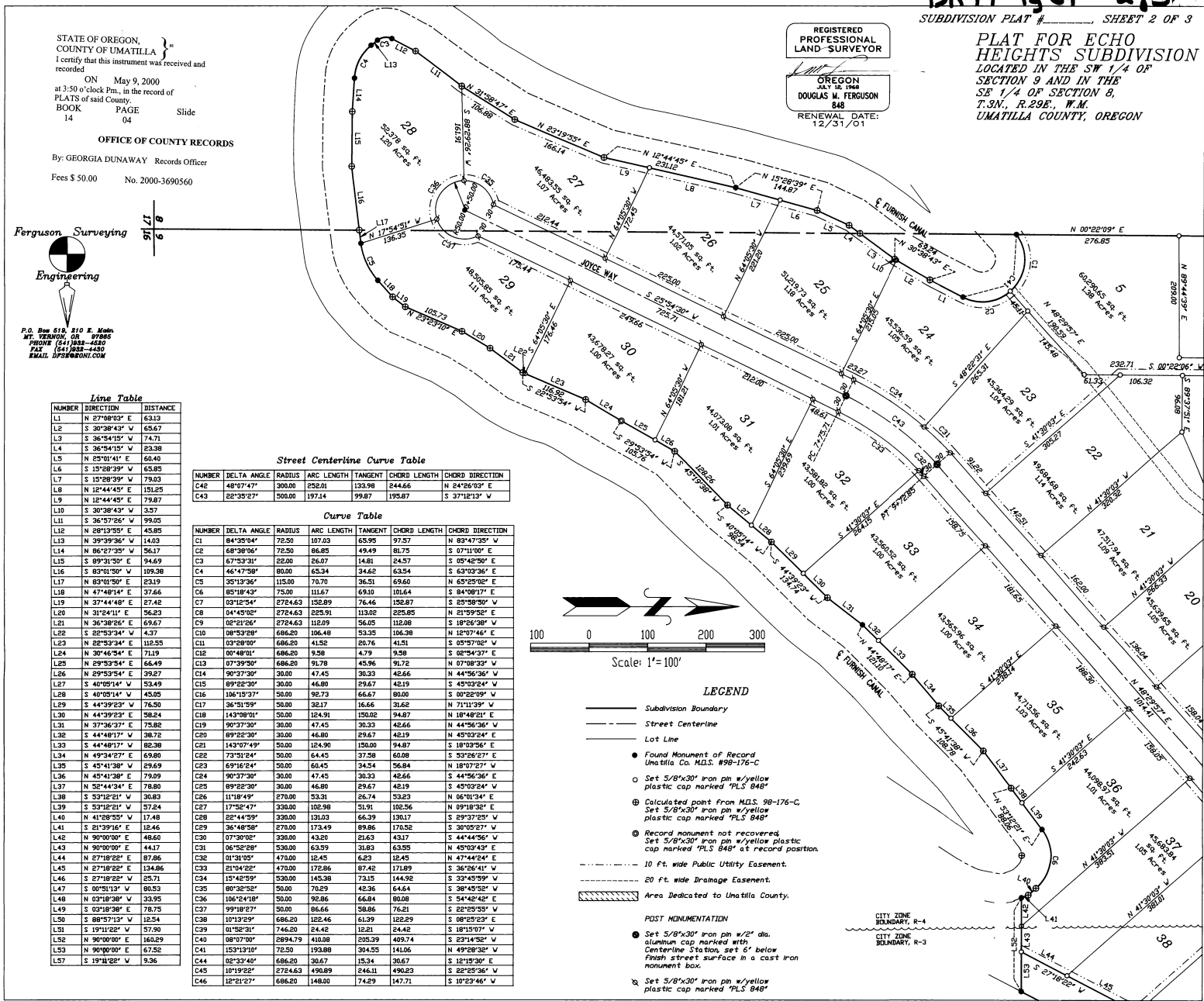


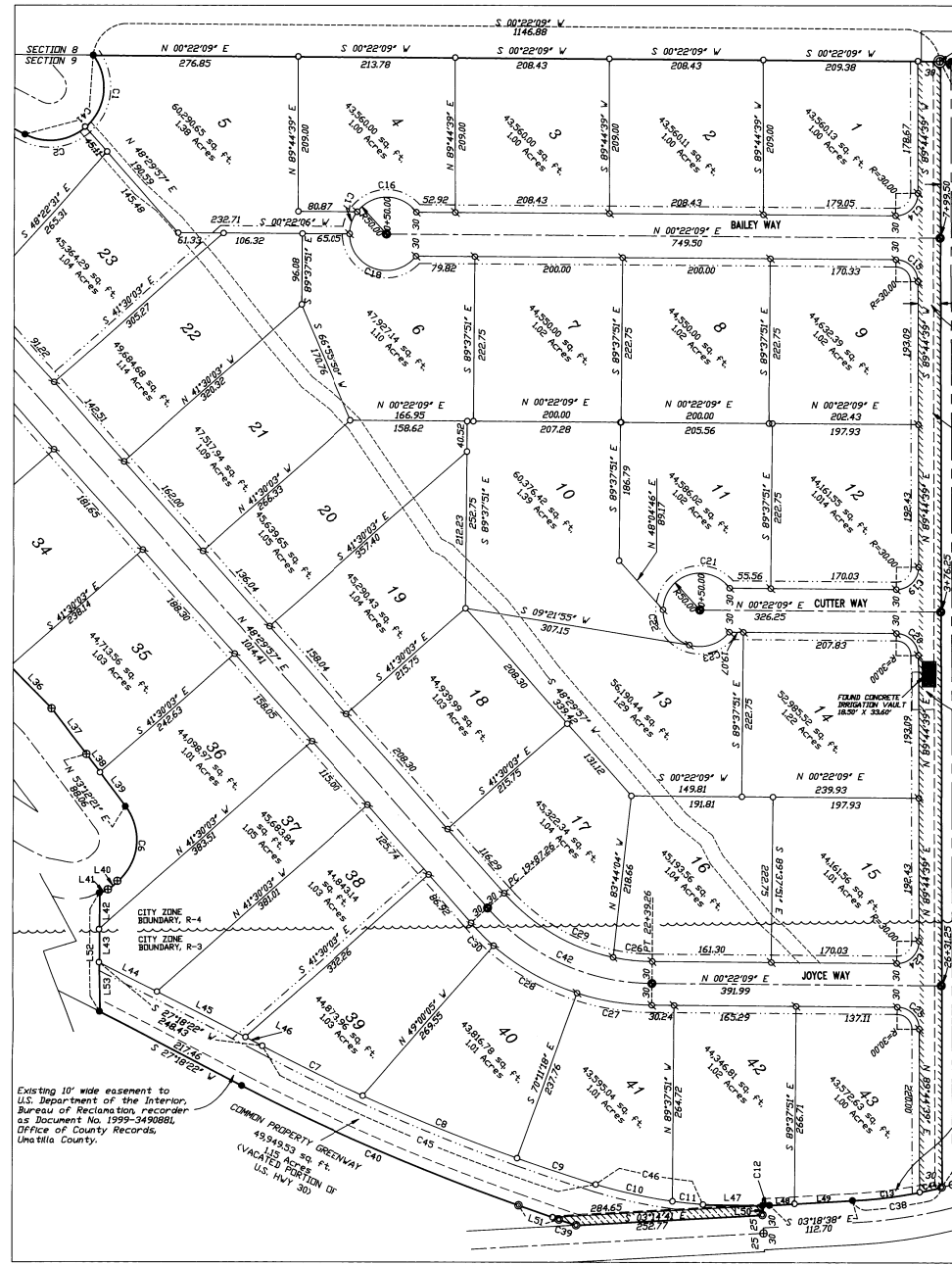
LEGEND

- Subdivision Boundary
- - - Street Centerline
- Lot Line
- Found Monument of Record Umatilla Co. M.D.S. #98-176-C
- Set 5/8"x30" iron pin w/yellow plastic cap marked "PLS 848"
- ⊙ Calculated point from M.D.S. #98-176-C. Set 5/8"x30" iron pin w/yellow plastic cap marked "PLS 848"
- ⊙ Record monument not recovered. Set 5/8"x30" iron pin w/yellow plastic cap marked "PLS 848" at record position.
- - - 10 ft. wide Public Utility Easement.
- - - 20 ft. wide Drainage Easement.
- ▨ Area Dedicated to Umatilla County.

POST MONUMENTATION

- ⊙ Set 5/8"x30" iron pin w/2" dia. aluminum cap marked with Centerline Station, set 6" below finish street surface in a cast iron monument box.
- ⊙ Set 5/8"x30" iron pin w/yellow plastic cap marked "PLS 848"





WEST 1/4 CORNER SECTION 9
 FOUND 2 1/4" BRASS CAP from
 Survey No. 98-155-C,
 See Survey No. 98-176-C

PLAT FOR ECHO HEIGHTS SUBDIVISION
 LOCATED IN THE SW 1/4 OF SECTION 9 AND IN THE SE 1/4 OF SECTION 8,
 T.3N., R.29E., W.M.
 UMATILLA COUNTY, OREGON

Ferguson Surveying
 Engineering

P.O. Box 619, 210 E. Main
 ST. YVES, OR 97686
 PHONE (541) 833-4280
 FAX (541) 833-4280
 EMAIL DF@FSONI.COM

REGISTERED PROFESSIONAL LAND SURVEYOR

OREGON
 JULY 18, 1998
 DOUGLAS M. FERGUSON
 848
 RENEWAL DATE:
 12/31/01

Scale: 1"=100'

LEGEND

- Subdivision Boundary
- Street Centerline
- Lot Line
- Found Monument of Record Umatilla Co. M.S. #98-176-C
- Set 5/8"x30" iron pin w/yellow plastic cap marked "PLS 848"
- Calculated point from M.S. 98-176-C. Set 5/8"x30" iron pin w/yellow plastic cap marked "PLS 848"
- Record monument not recovered. Set 5/8"x30" iron pin w/yellow plastic cap marked "PLS 848" at record position.
- 10 Ft. wide Public Utility Easement.
- 20 Ft. wide Drainage Easement.
- Area Dedicated to Umatilla County.

STATE OF OREGON, COUNTY OF UMATILLA

I certify that this instrument was received and recorded.

ON May 9, 2000
 at 3:50 o'clock P.m., in the record of PLATS of said County.

BOOK PAGE Slide
 14 04

OFFICE OF COUNTY RECORDS

By: GEORGIA DUNAWAY Records Officer
 Fees \$ 50.00 No. 2000-3690560

Existing 10' wide easement to U.S. Department of the Interior, Bureau of Reclamation, recorder as Document No. 1998-336293L, Office of County Records, Umatilla County.

DEVELOPERS

SANTIAM PROPERTIES, LLC
 1840 Pacific CL
 STATION, OR 97389
 Phone (503) 759-4999
 Fax (503) 759-7940