

**ROAD 116  
WIDTH = 60'**

**ECHO-BUTTER CREEK HWY  
WIDTH = 60'**

?

R27

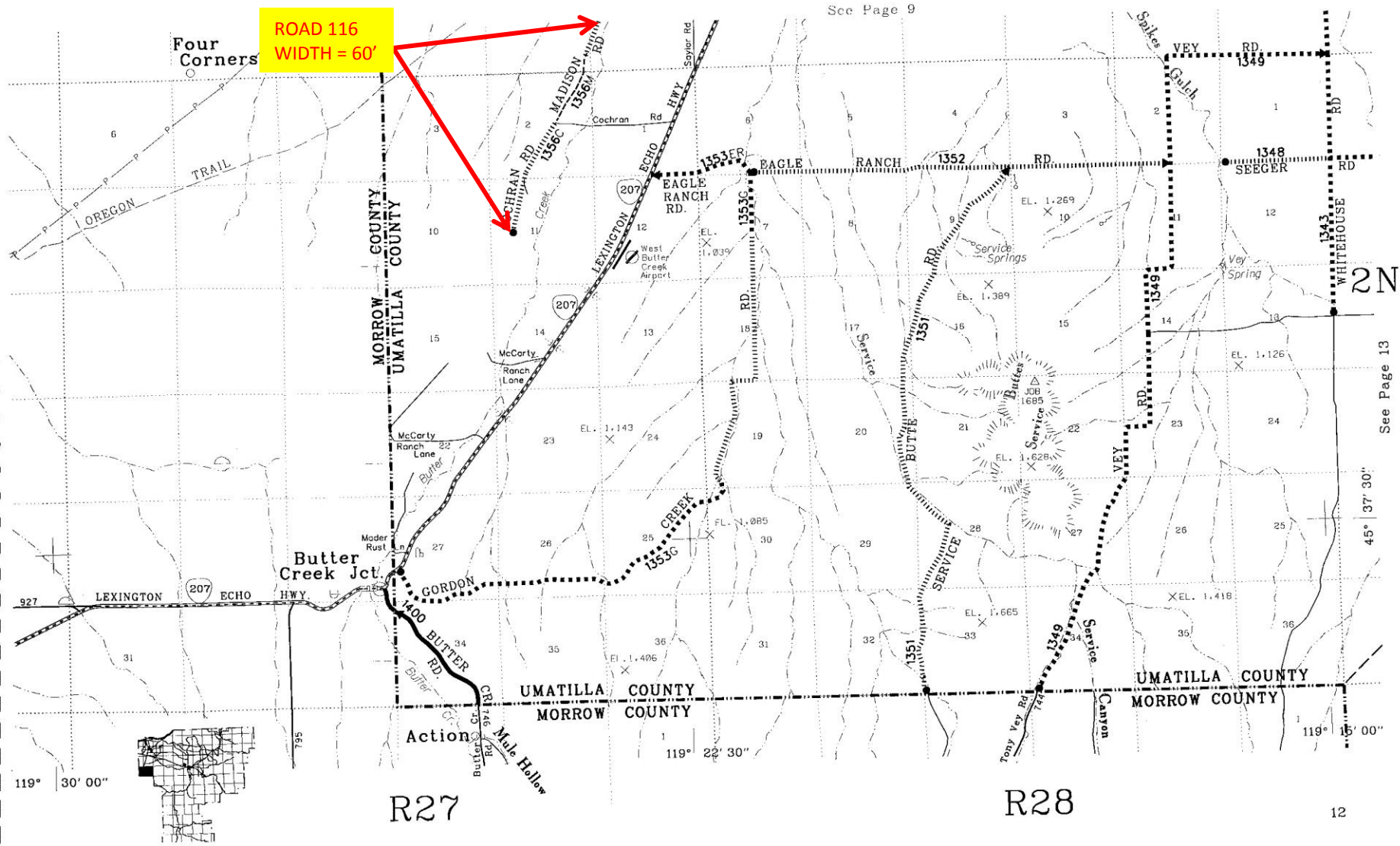
R28

See Page 12

See Page 10

ROAD 116  
WIDTH = 60'

See Page 9



2N

See Page 13

45° 37' 30"

119° 15' 00"

119° 30' 00"

R27

R28

12