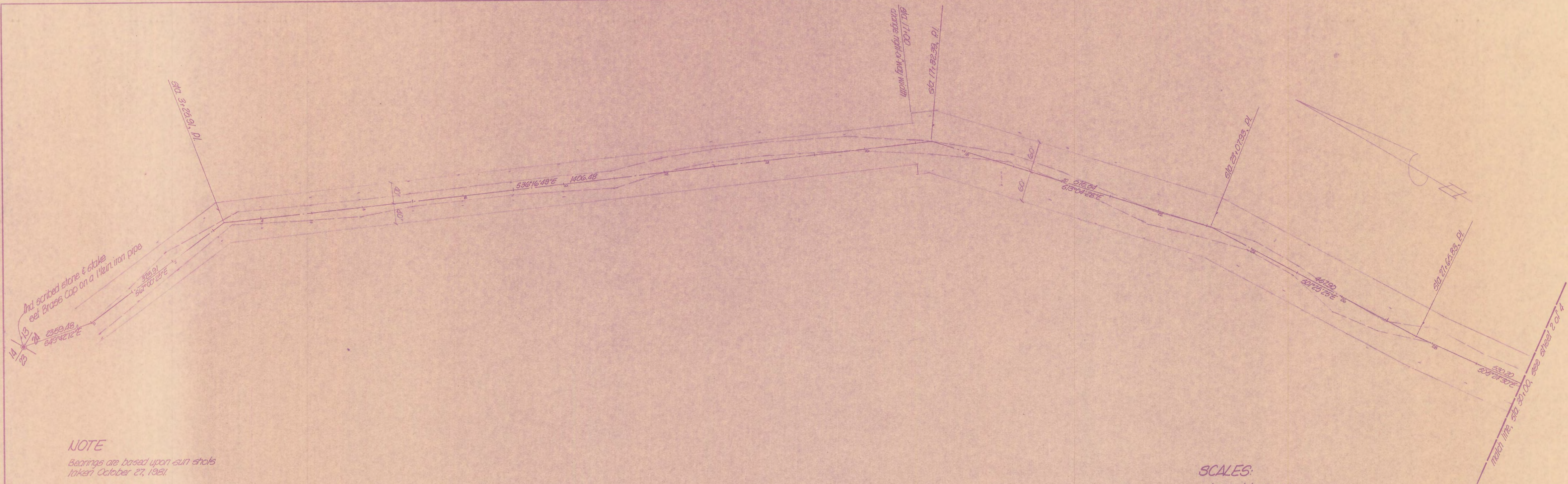
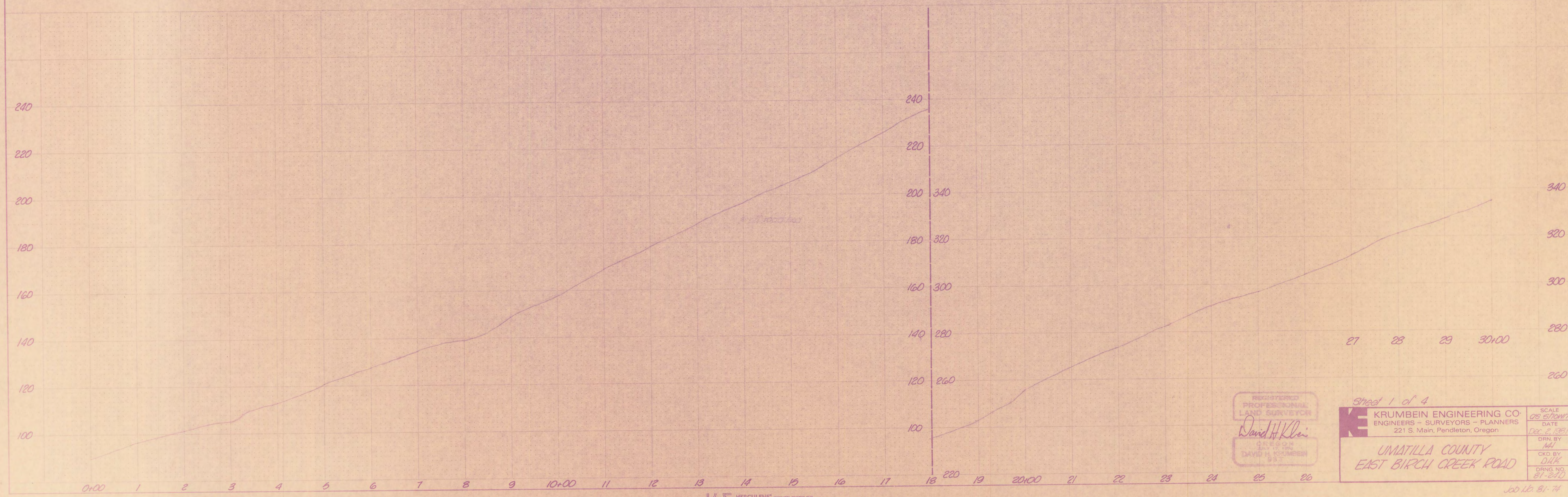


DATE	
BY	
CHKD.	
REV.	
PLAN	
NO.	
DATE	
BY	
CHKD.	
REV.	
PROFILE	
NO.	



**NOTE**  
Bearings are based upon sun shots taken October 27, 1981.

**SCALES:**  
horizontal: 1" = 100'  
vertical: 1" = 20'



DATE	
BY	
CHKD.	
REV.	
PROFILE	
NO.	
DATE	
BY	
CHKD.	
REV.	
PLAN	
NO.	

REGISTERED PROFESSIONAL LAND SURVEYOR  
*David H. Klein*  
DAVID H. KRUMBEIN  
P.S.

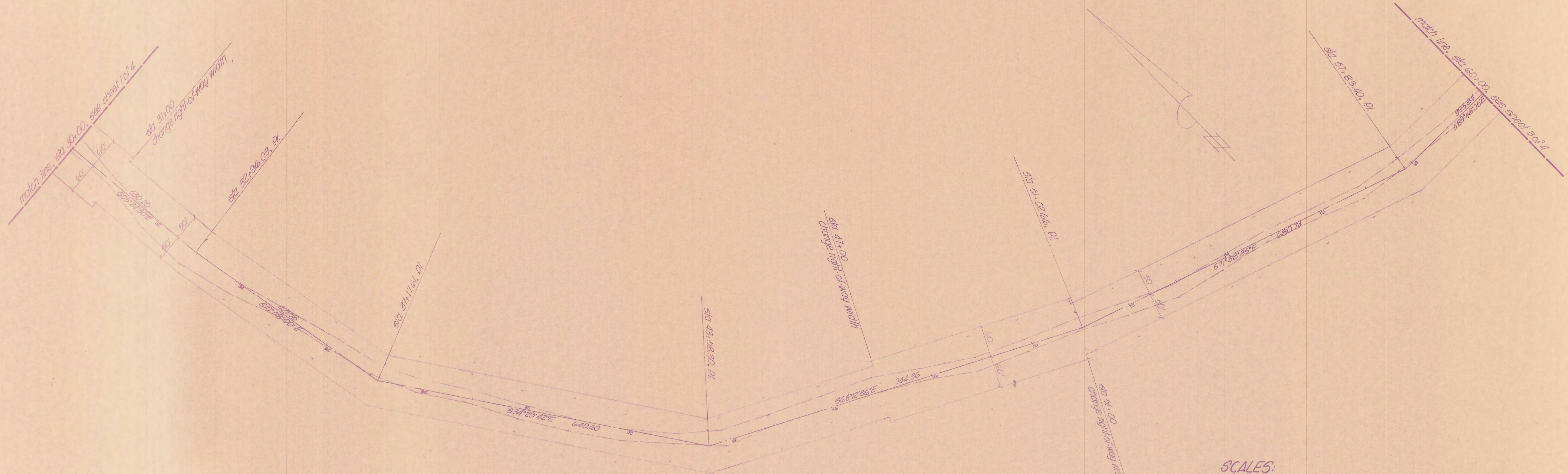
Sheet 1 of 4  
**KRUMBEIN ENGINEERING CO.**  
ENGINEERS - SURVEYORS - PLANNERS  
221 S. Main, Pendleton, Oregon

**UMATILLA COUNTY**  
**EAST BIRCH CREEK ROAD**

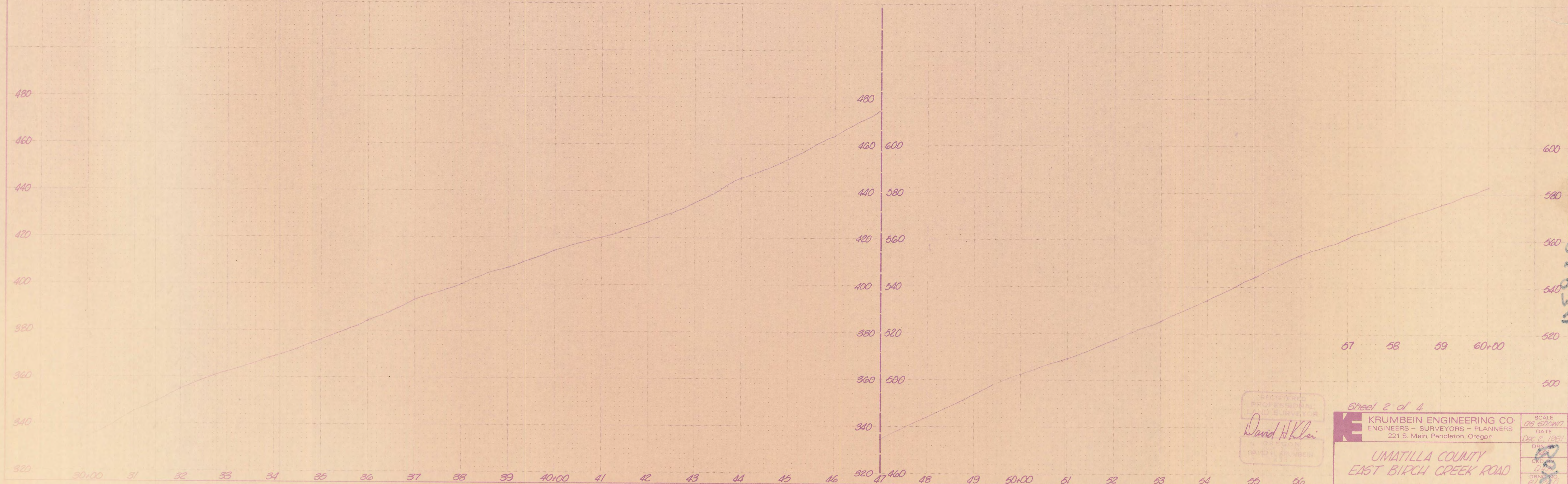
SCALE	AS SHOWN
DATE	Dec 2, 1981
DRN. BY	MH
CKD. BY	DHK
DRNG. NO.	81-240

PLAN	DATE	BY
NO. 1		
NO. 2		
NO. 3		
NO. 4		
NO. 5		
NO. 6		
NO. 7		
NO. 8		
NO. 9		
NO. 10		

PROFILE	DATE	BY
NO. 1		
NO. 2		
NO. 3		
NO. 4		
NO. 5		
NO. 6		
NO. 7		
NO. 8		
NO. 9		
NO. 10		



SCALES:  
 horizontal: 1" = 100'  
 vertical: 1" = 20'



REGISTERED PROFESSIONAL SURVEYOR  
 David H. Klein

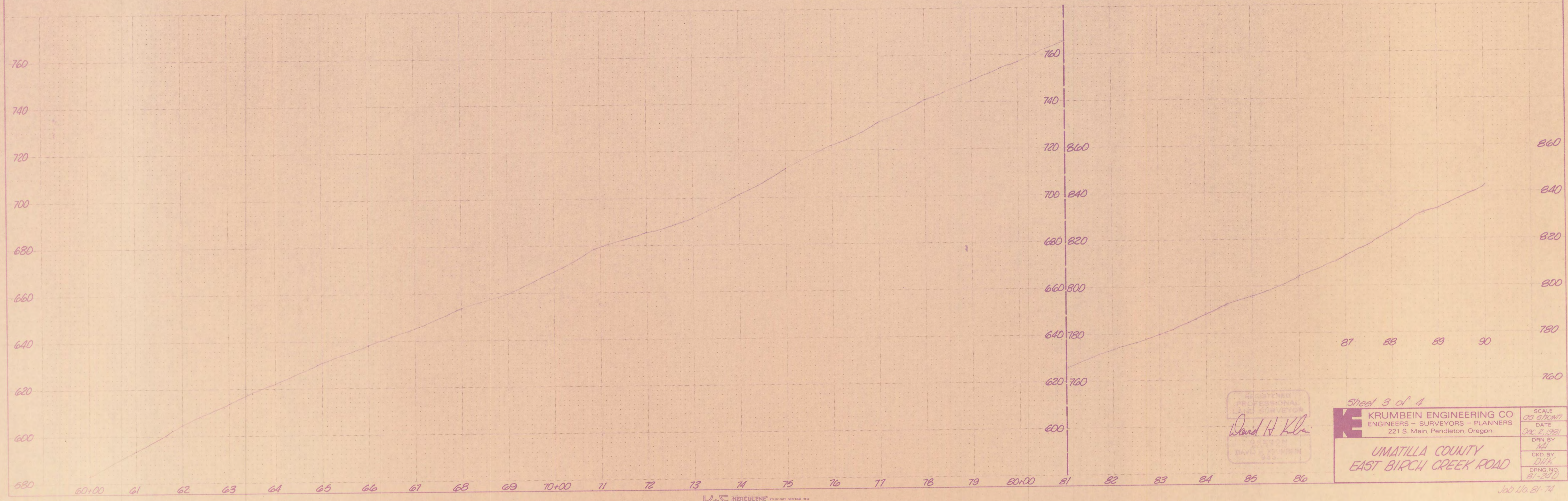
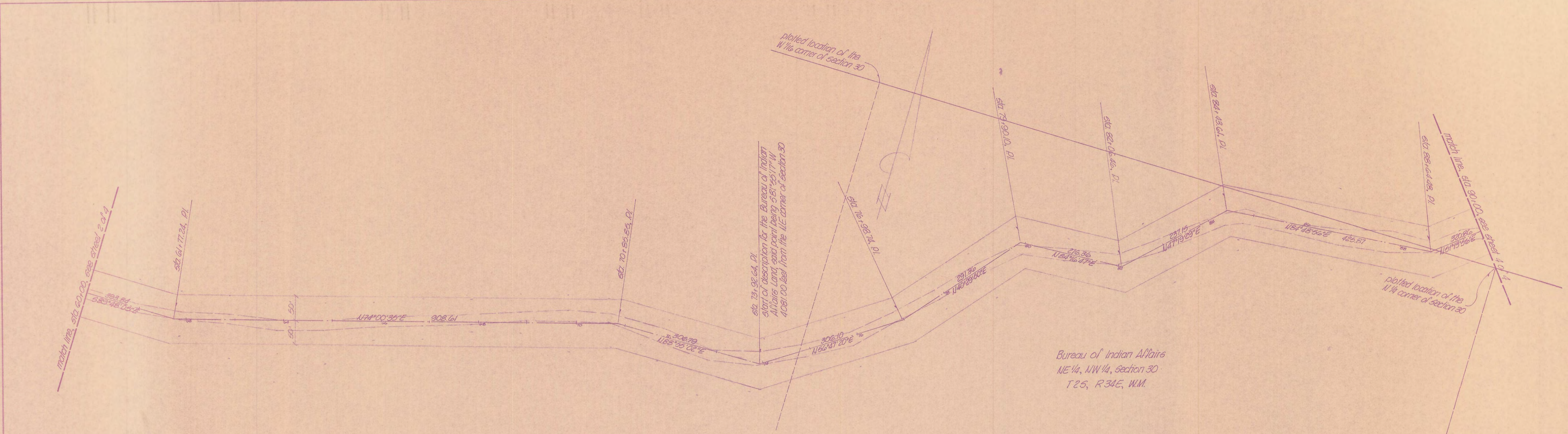
Sheet 2 of 4  
 KRUMBEIN ENGINEERING CO  
 ENGINEERS - SURVEYORS - PLANNERS  
 221 S. Main, Pendleton, Oregon  
 UMATILLA COUNTY  
 EAST BIRCH CREEK ROAD

SCALE	DATE
1" = 100'	Dec 6, 1951
1" = 20'	
DRG. NO.	
DRG. NO.	
DRG. NO.	

Job 16-51-74  
 11  
 11

DATE	
BY	
REVISIONS	
NO.	
PLAN	
NOTE BOOK	
NO.	

DATE	
BY	
REVISIONS	
NO.	
PROFILE	
NOTE BOOK	
NO.	



SCALES:  
horizontal: 1" = 100'  
vertical: 1" = 20'

REGISTERED PROFESSIONAL SURVEYOR  
David H. Klein  
No. 533

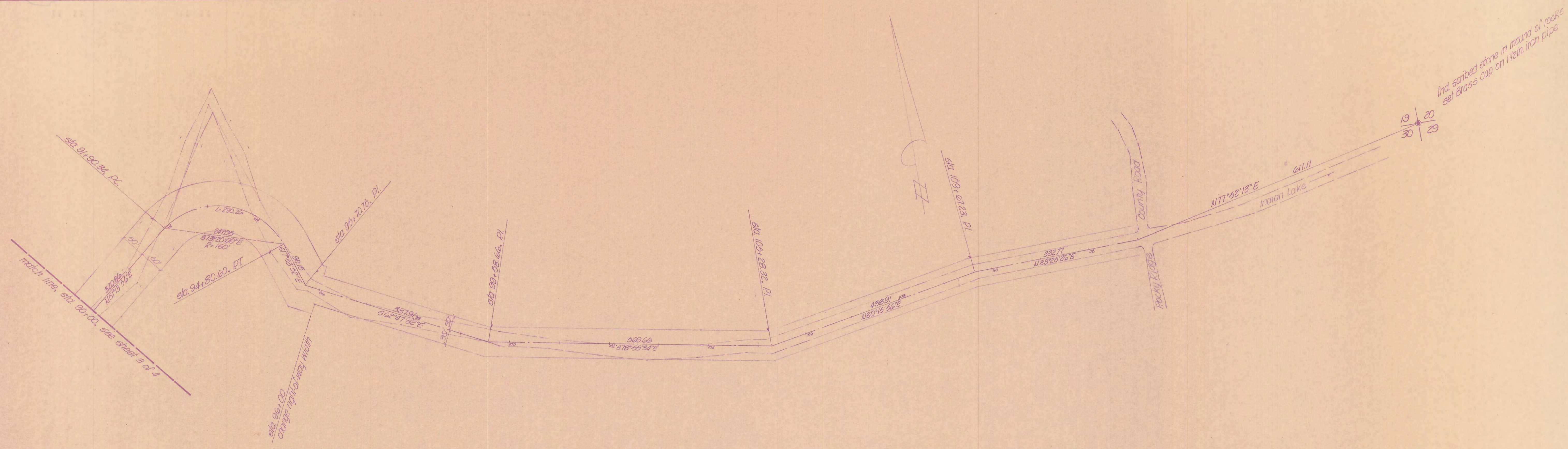
Sheet 3 of 4  
K KRUNBEIN ENGINEERING CO  
ENGINEERS - SURVEYORS - PLANNERS  
221 S. Main, Pendleton, Oregon  
UMATILLA COUNTY  
EAST BIRCH CREEK ROAD

SCALE	AS SHOWN
DATE	Dec. 2, 1991
DRN BY	DK
CKD BY	DK
DRNG NO.	81-230

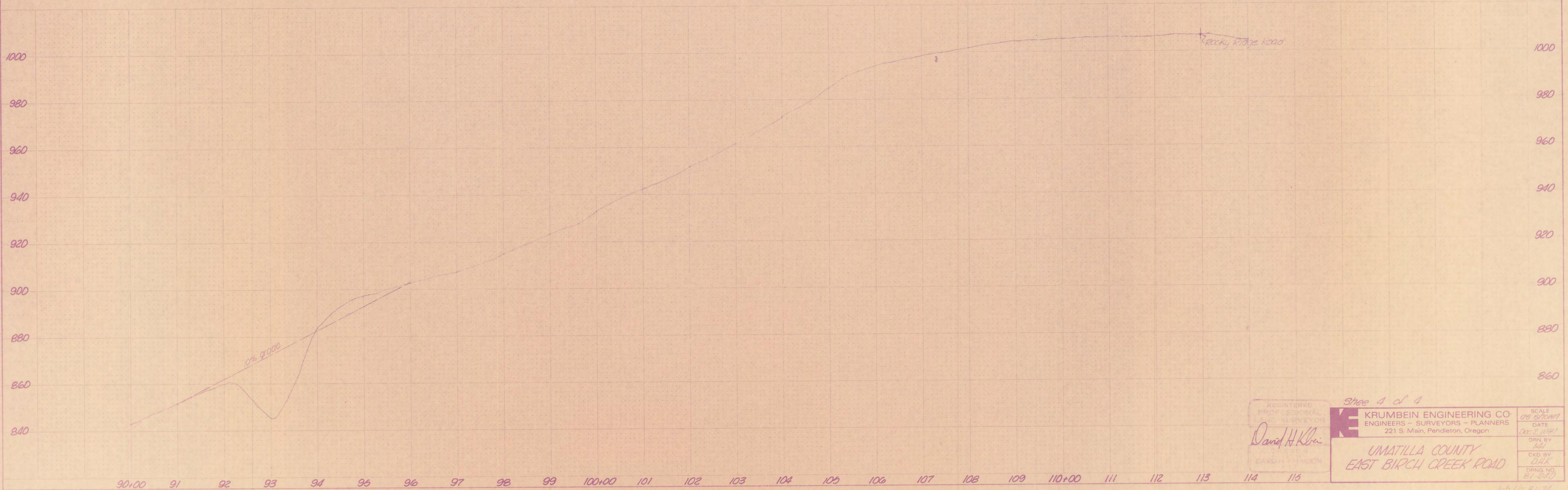
Job No. 81-74

K<sup>®</sup> E HERCULENE<sup>®</sup> CRYSTALENE II  
MADE IN U.S.A. FROM RECYCLED PAPER  
SPECIAL FINISH FOR PATTERNS 80-1

17.19



SCALES:  
 horizontal: 1" = 100'  
 vertical: 1" = 20'



Site 4 of 4

REGISTERED PROFESSIONAL SURVEYOR  
 David H. Krumben  
 CARD NO. 11500

KRUMBEIN ENGINEERING CO  
 ENGINEERS - SURVEYORS - PLANNERS  
 221 S. Main, Pendleton, Oregon

UMATILLA COUNTY  
 EAST BIRCH CREEK ROAD

SCALE 1/8" = 50' (HORIZ)  
 DATE Dec 2, 1981  
 DRN BY JHJ  
 CKD BY DAK  
 DRNG NO. 87-240

Job No. 81-74