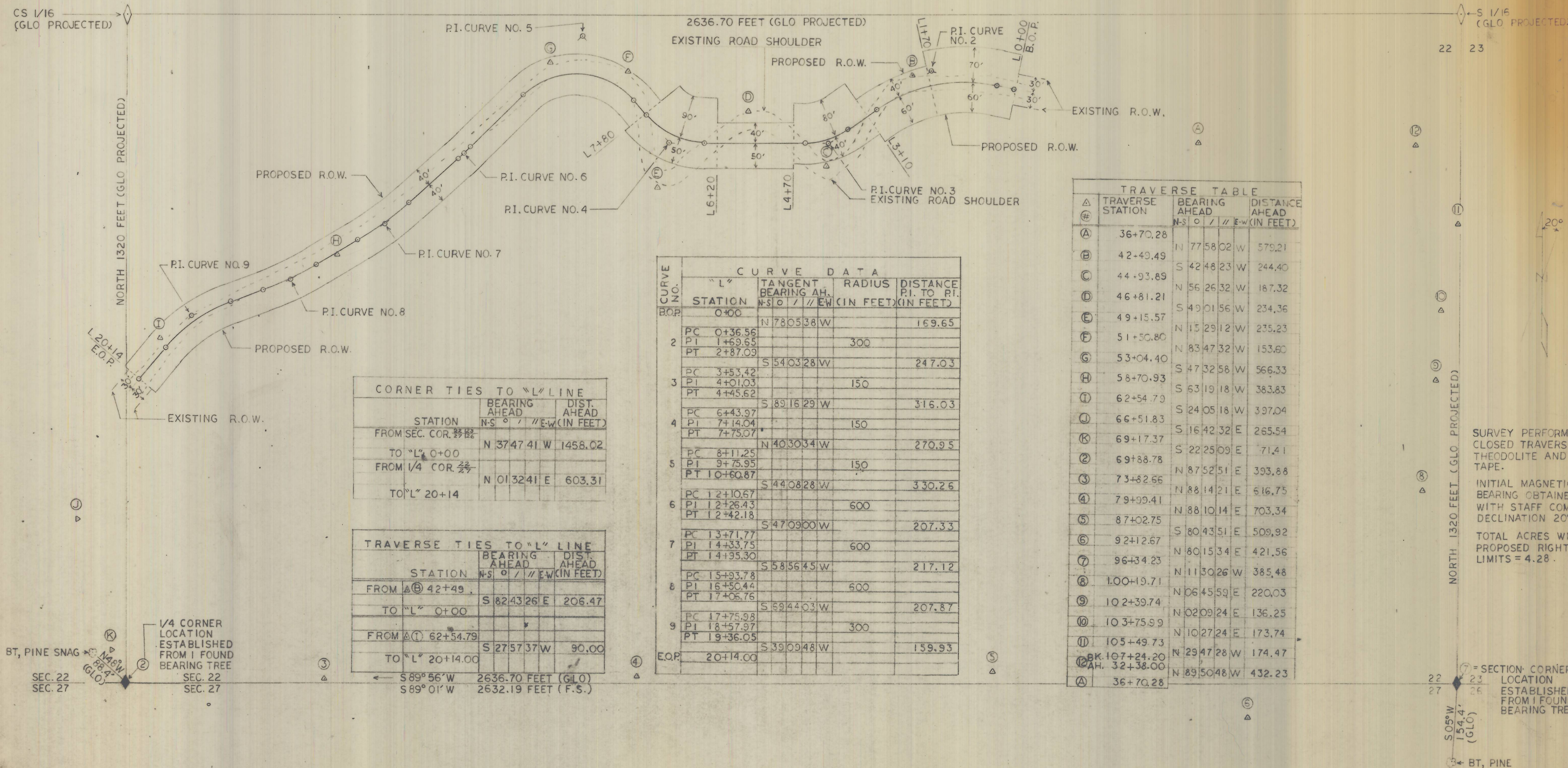


1732

S 1/2, SE 1/4, SEC. 22, T5S, R31E, W.M.
 A PORTION OF UMATILLA COUNTY TAX LOT 4100
 RUTH M. & ROBIN A. FLETCHER



CORNER TIES TO "L" LINE

STATION	BEARING AHEAD	DIST. AHEAD
	N-S ° / ° E-W	(IN FEET)
FROM SEC. COR. 22/27	N 37°47'41" W	1458.02
TO "L" 0+00		
FROM 1/4 COR. 22/27	N 01°32'41" E	603.31
TO "L" 20+14		

TRAVERSE TIES TO "L" LINE

STATION	BEARING AHEAD	DIST. AHEAD
	N-S ° / ° E-W	(IN FEET)
FROM Δ 42+49	S 82°43'26" E	206.47
TO "L" 0+00		
FROM Δ 62+54.79	S 27°57'37" W	90.00
TO "L" 20+14.00		

CURVE DATA

CURVE NO.	"L" STATION	TANGENT BEARING	RADIUS	DISTANCE P.I. TO P.T.
		N-S ° / ° E-W	(IN FEET)	(IN FEET)
2	PC 0+36.56 PI 1+69.65 PT 2+87.09	N 78°05'38" W	300	169.65
3	PC 3+53.42 PI 4+01.03 PT 4+45.62	S 54°03'28" W	150	247.03
4	PC 6+43.97 PI 7+14.04 PT 7+75.07	S 89°16'29" W	150	316.03
5	PC 8+11.25 PI 9+75.95 PT 10+60.87	N 40°30'34" W	150	270.95
6	PC 12+10.67 PI 12+26.43 PT 12+42.18	S 44°08'28" W	600	330.25
7	PC 13+71.77 PI 14+33.75 PT 14+95.30	S 47°09'00" W	600	207.33
8	PC 15+93.78 PI 16+50.44 PT 17+05.75	S 58°56'45" W	600	217.12
9	PC 17+75.98 PI 18+57.97 PT 19+36.05	S 59°44'03" W	300	207.87
EQP.	20+14.00	S 39°09'48" W		159.93

TRAVERSE TABLE

TRAVERSE STATION	BEARING AHEAD	DISTANCE AHEAD
	N-S ° / ° E-W	(IN FEET)
Δ A	36+70.28	N 77°58'02" W 579.21
B	42+49.49	S 42°48'23" W 244.40
C	44+93.89	N 56°26'32" W 187.32
D	46+81.21	S 49°01'56" W 234.36
E	49+15.57	N 15°29'12" W 235.23
F	51+50.80	N 83°47'32" W 153.60
G	53+04.40	S 47°32'58" W 566.33
H	58+70.93	S 63°19'18" W 383.83
I	62+54.79	S 24°05'18" W 397.04
J	66+51.83	S 16°42'32" E 265.54
K	69+17.37	S 22°25'09" E 71.41
①	69+88.78	N 87°52'51" E 393.88
②	73+82.66	N 88°14'21" E 616.75
③	79+09.41	N 88°10'14" E 703.34
④	87+02.75	S 80°43'51" E 509.92
⑤	92+12.67	N 80°15'34" E 421.56
⑥	96+34.23	N 11°30'26" W 385.48
⑦	100+10.71	N 06°45'59" E 220.03
⑧	102+39.74	N 02°09'24" E 136.25
⑨	103+75.99	N 10°27'24" E 173.74
⑩	105+49.73	N 29°47'28" W 174.47
Δ BK	107+24.20	N 89°50'48" W 432.23
Δ AH	32+38.00	
Δ A	36+70.28	

SURVEY PERFORMED BY CLOSED TRAVERSE WITH THEODOLITE AND STEEL TAPE.
 INITIAL MAGNETIC BEARING OBTAINED WITH STAFF COMPASS. DECLINATION 20° EAST.
 TOTAL ACRES WITHIN PROPOSED RIGHT-OF-WAY LIMITS = 4.28.

R. O. APPROVAL: _____ TITLE _____

APPROVED: _____ FOREST SUPERVISOR _____

U. S. DEPARTMENT OF AGRICULTURE FOREST SERVICE THE PACIFIC NORTHWEST REGION

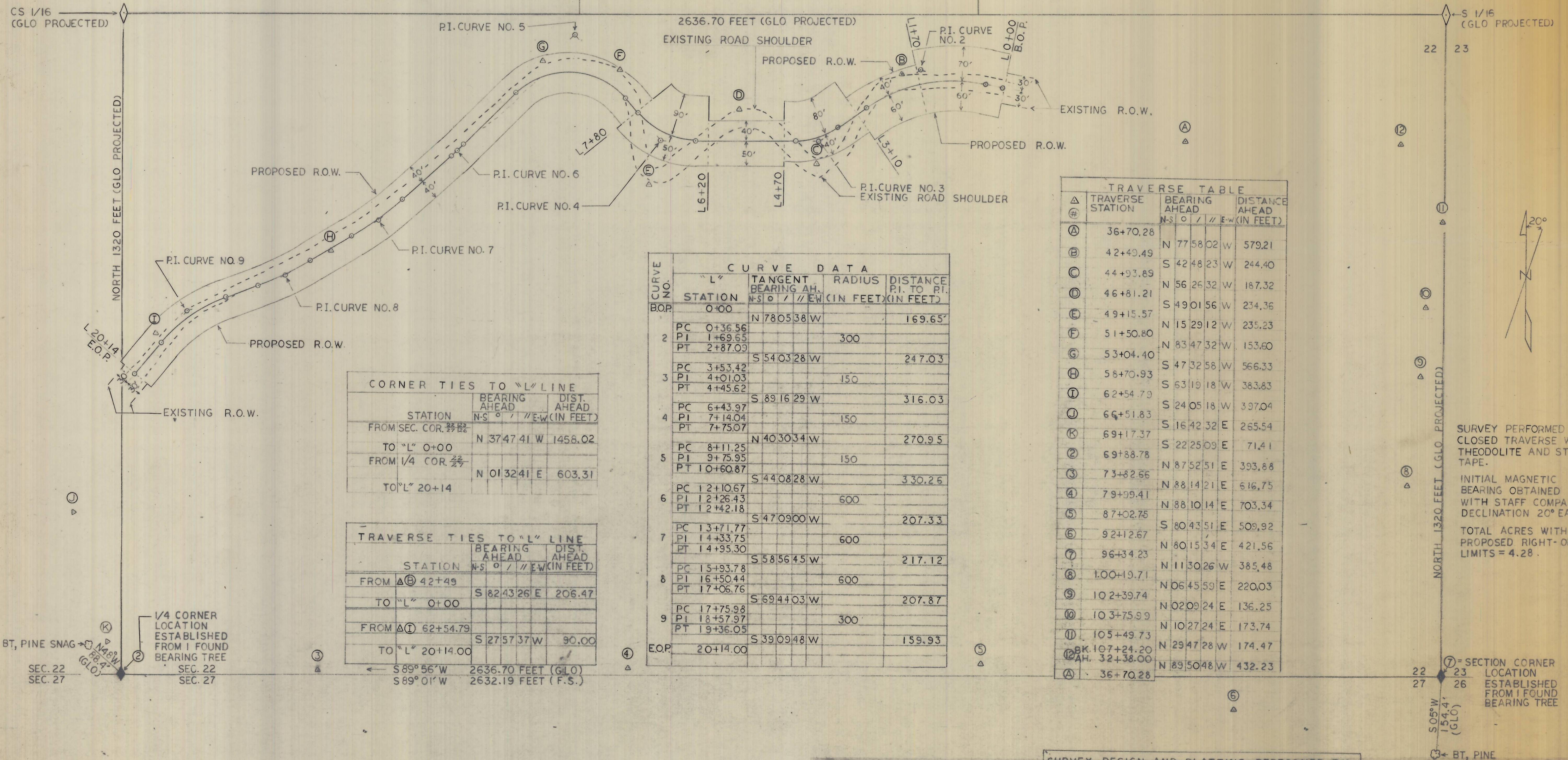
R. O. STAFF RECOMMENDATION	E	FOREST ENGINEER	DESIGNED <i>T. Holloman</i> DATE: 2-2-78
	R	RECREATION STAFF	DATE: 1-27-78
	O	DISTRICT RANGER	CHECKED <i>W. Dwyer</i> DATE: 1-27-78
			SUBMITTED _____ DATE: _____

SH. _____ of _____

22621
 Box "A" 108

UMATILLA DEPARTMENT
OF PUBLIC ROADS
CARLOS VAN ELSBERG, DIRECTOR

S 1/2, SE 1/4, SEC. 22, T5S, R31E, W.M.
A PORTION OF UMATILLA COUNTY TAX LOT 4100
RUTH M. & ROBIN A. FLETCHER



CORNER TIES TO "L" LINE

STATION	BEARING AHEAD	DIST. AHEAD
	N-S ° / // E-W (IN FEET)	(IN FEET)
FROM SEC. COR. 22 1/2	N 37 47 41 W	1458.02
TO "L" 0+00		
FROM 1/4 COR. 22 1/4	N 01 32 41 E	603.31
TO "L" 20+14		

TRAVERSE TIES TO "L" LINE

STATION	BEARING AHEAD	DIST. AHEAD
	N-S ° / // E-W (IN FEET)	(IN FEET)
FROM A 42+49	S 82 43 26 E	206.47
TO "L" 0+00		
FROM A 62+54.79	S 27 57 37 W	90.00
TO "L" 20+14.00		

CURVE DATA

CURVE NO.	"L" STATION	TANGENT BEARING AHEAD	RADIUS	DISTANCE P.I. TO P.T.
		N-S ° / // E-W (IN FEET)	(IN FEET)	(IN FEET)
B.O.P.	0+00	N 78 05 38 W		169.65'
2	PC 0+36.56 PI 1+69.65 PT 2+87.03		300	
3	PC 3+53.42 PI 4+01.03 PT 4+45.62	S 54 03 28 W	150	247.03
4	PC 6+43.97 PI 7+14.04 PT 7+75.07	S 89 16 29 W	150	316.03
5	PC 8+11.25 PI 9+75.95 PT 10+60.87	N 40 30 34 W	150	270.95
6	PC 12+10.67 PI 12+26.43 PT 12+42.18	S 44 08 28 W	600	330.26
7	PC 13+71.77 PI 14+33.75 PT 14+95.30	S 47 09 00 W	600	207.33
8	PC 15+93.78 PI 16+50.44 PT 17+06.76	S 58 56 45 W	600	217.12
9	PC 17+75.98 PI 18+57.97 PT 19+36.05	S 69 44 03 W	300	207.87
E.O.P.	20+14.00	S 39 09 48 W		159.93

TRAVERSE TABLE

TRAVERSE STATION	BEARING AHEAD	DISTANCE AHEAD
	N-S ° / // E-W (IN FEET)	(IN FEET)
A	36+70.28	
B	42+40.49	N 77 58 02 W 579.21
C	44+93.89	S 42 48 23 W 244.40
D	46+81.21	N 56 25 32 W 187.32
E	49+15.57	S 49 01 56 W 234.36
F	51+50.80	N 15 29 12 W 235.23
G	53+04.40	N 83 47 32 W 153.60
H	58+70.93	S 47 32 58 W 566.33
I	62+54.79	S 63 19 18 W 383.83
J	66+51.83	S 24 05 18 W 397.04
K	69+17.37	S 16 42 32 E 265.54
L	69+88.78	S 22 25 09 E 71.41
M	73+82.66	N 87 52 51 E 393.88
N	79+99.41	N 88 14 21 E 616.75
O	87+02.75	N 88 10 14 E 703.34
P	92+12.67	S 80 43 51 E 509.92
Q	96+34.23	N 80 15 34 E 421.56
R	100+19.71	N 11 30 26 W 385.48
S	102+39.74	N 06 45 59 E 220.03
T	103+75.99	N 02 09 24 E 136.25
U	105+49.73	N 10 27 24 E 173.74
V	BK 107+24.20 AH. 32+38.00	N 29 47 28 W 174.47
W	36+70.28	N 83 50 48 W 432.23

SURVEY DESIGN AND PLATTING PERFORMED BY:
U. S. DEPARTMENT OF AGRICULTURE
FOREST SERVICE
UMATILLA NATIONAL FOREST

SURVEYED K. Chamberlain DATE 12/77
DESIGNED Thomas G. Holloman DATE 1-7-78
DRAWN Thomas G. Holloman DATE 1-7-78
CHECKED William K. Guryer DATE 1-8-78

SURVEY PERFORMED BY
CLOSED TRAVERSE WITH
THEODOLITE AND STEEL
TAPE.
INITIAL MAGNETIC
BEARING OBTAINED
WITH STAFF COMPASS.
DECLINATION 20° EAST.
TOTAL ACRES WITHIN
PROPOSED RIGHT-OF-WAY
LIMITS = 4.28.

1/4 CORNER
LOCATION
ESTABLISHED
FROM 1 FOUND
BEARING TREE

BT, PINE SNAG

SEC. 22
SEC. 27

SECTION CORNER
LOCATION
ESTABLISHED
FROM 1 FOUND
BEARING TREE

BT, PINE