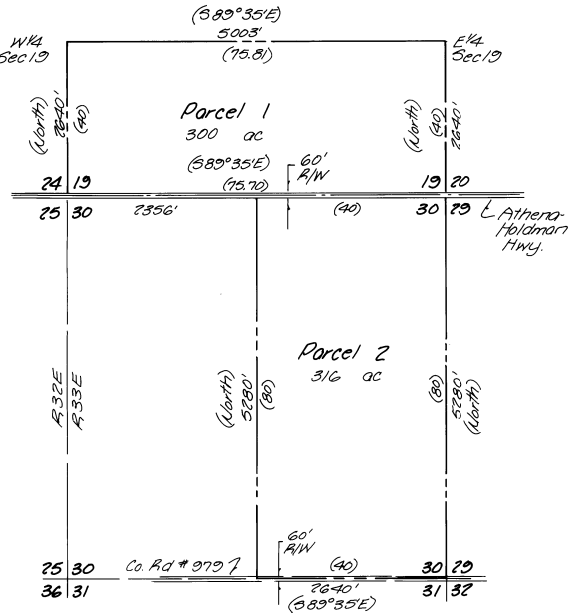


1990-8

Umatilla County
PARTITION PLAT 1990-08

in the South one-half of Sec 19 and the East one-half of Sec 30, T4N, R33E, W.M., Umatilla County, Oregon, Land Division # LD-4U-528-90

STATE OF OREGON }
COUNTY OF UMATILLA }
I, JOYCE GERDES County Clerk,
certify that this instrument was received and
recorded
ON AUG. 30, 1990
at 1:28 o'clock P.M. in the record
of Partition Plats of said County in
Book Page
FP 3
JOYCE GERDES
County Clerk
By Betty Jo Browning Deputy
Fees \$ 15.00 No. 156926



APPROVALS

This partition plat is hereby approved this 30th day of August, 1990.

Dennis O'Brien
Planning Dept.

This partition plat is hereby approved this 22nd day of August, 1990.

J. Dennis Elwood
County Surveyor
Morrow County

() denotes original GLO plat bearings and distances

LEGAL DESCRIPTION

A parcel of land being the South one-half of Section 19, T4N, R33E, W.M. and the East one-half of Section 30, T4N, R33E, W.M., All being in Umatilla County, Oregon.

This is a true and exact copy.

David H. Krumbin

SURVEYOR'S NARRATIVE

The purpose of this Partition Plat is to partition into two parcels that land belonging to Martindale as recorded on Roll 190, Page 1442. Since both parcels are 300 acres or more, no survey was done. Bearings and distances are taken from the original GLO plat for T4N, R33E.

David H. Krumbin
David H. Krumbin
PLS 933



KRUMBEIN ENGINEERING LTD. ENGINEERS - SURVEYORS - PLANNERS 361 S.E. Second Pendleton, Oregon	Scale	Drn. By	Drng. No.	Revision 1
	1"=1000'	MCO	9004C	
	Date	Ckt. By	Job No.	Revision 2
	8-19-90	DHS	90-13	
Partition Plat for MARTINDALE 6 1/2 of Sec 19 & E 1/2 of Sec 30 T4N, R33E, W.M.				