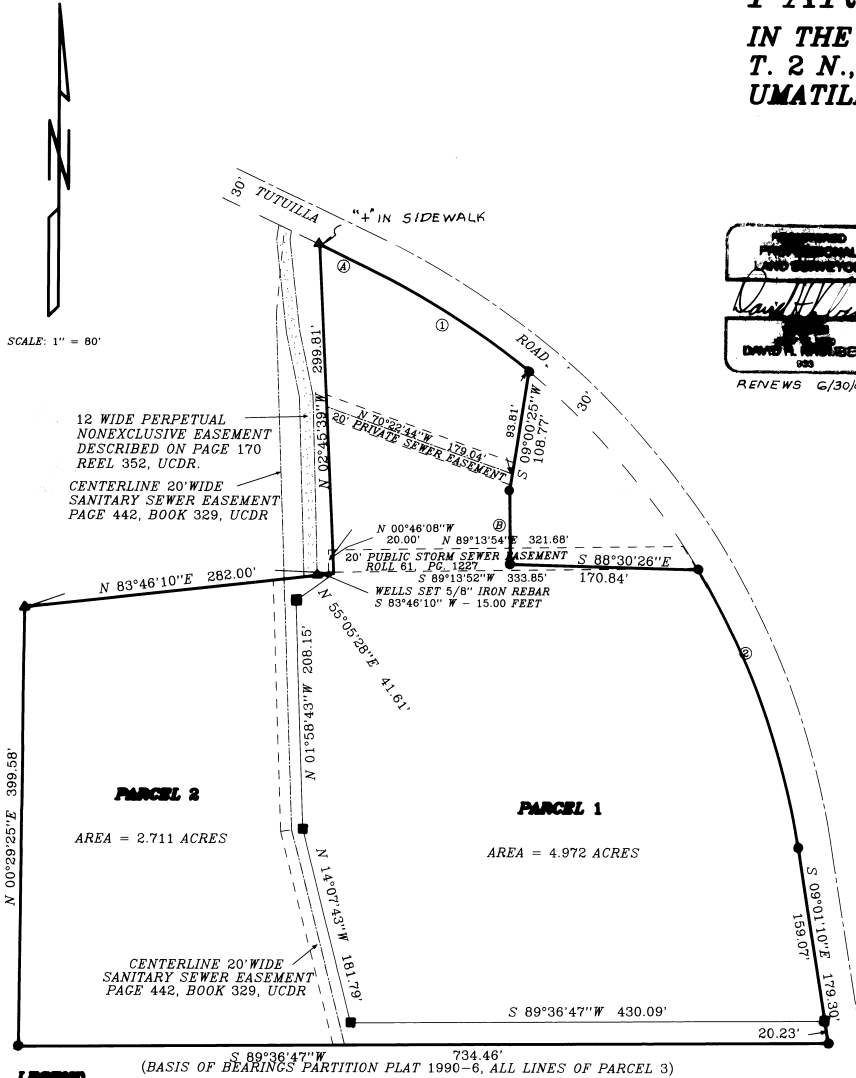


PARTITION PLAT NO. 2002 - 29

IN THE NE 1/4, NW 1/4 SECTION 15
T. 2 N., R.32 E.W.M., CITY OF PENDLETON
UMATILLA COUNTY, STATE OF OREGON



SURVEYORS CERTIFICATE AND NARRATIVE

I CERTIFY THAT I HAVE CORRECTLY SHOWN PARCELS 1 AND 2 OF THIS PARTITION IN ACCORDANCE WITH ORS CHAPTER 92, AS REVISED AND THE SUBDIVISION ORDINANCE OF THE CITY OF PENDLETON. THIS SURVEY WAS MADE AT THE REQUEST OF KENNETH A. AND BEATTA L. HEER, OWNERS OF PARCEL 2. PARTITION PLAT 1990-6. MONUMENTS FROM THE PREVIOUS PARTITION WERE FOUND AS SHOWN AND THE DIVIDING LINE BETWEEN PARCELS 1 AND 2 IS THE EASTERLY ROW LINE OF THE SANITARY SEWER EASEMENT AS SHOWN AND AS DESCRIBED ON PAGE 442 OF BOOK 329 OF THE UMATILLA COUNTY DEED RECORDS. BEARINGS ARE BASED UPON THE PREVIOUS PARTITION PLAT.

LEGAL DESCRIPTION

PARCEL 2 OF PARTITION PLAT NO. 1990-6, RECORDED JULY 31, 1990 IN THE UMATILLA COUNTY CLERKS OFFICE. SUBJECT TO THE EASEMENTS AS SHOWN. AREA = 7.683 ACRES. ALL BEING IN THE CITY OF PENDLETON, UMATILLA COUNTY, OREGON.

TRUSTEES DECLARATION

WE, KENNETH A. AND BEATTA L. HEER, DO HEREBY ACKNOWLEDGE THIS PARTITION PLAT WAS PREPARED WITH OUR KNOWLEDGE AND CONSENT, IN ACCORDANCE WITH ORS 92, AS REVISED, AND THE CITY OF PENDLETON SUBDIVISION ORDINANCE, AND DO HEREBY ACKNOWLEDGE THE EXISTING EASEMENTS AS SHOWN ON THIS PLAT.

Kenneth A. Heer Beatta L. Heer
KENNETH A. HEER, TRUSTEES BEATTA L. HEER, TRUSTEES
KENNETH A. HEER TRUST AND THE BEATTA L. HEER TRUST

SUBSCRIBED AND SWORN TO BEFORE ME THIS 27th DAY OF JULY 2002.
August

Cary J. Hollen
NOTARY PUBLIC FOR THE STATE OF OREGON
MY COMMISSION EXPIRES Feb. 14th 2006

CITY OF PENDLETON APPROVALS

EXAMINED AND APPROVED Aug 30, 2002
DATE

Ronald Schell
CITY OF PENDLETON PLANNING DIRECTOR

EXAMINED AND APPROVED 08/30/02
DATE

David H. Krumbeln
CITY OF PENDLETON SURVEYOR

COUNTY APPROVALS

EXAMINED AND APPROVED Aug 26, 2002
DATE

TAXES ARE PAID IN FULL AS OF 9/4/02
DATE

▲ INDICATES FND. 5/8" IRON REBAR, W/ PLASTIC CAP PLS 1106, C.S. NO. 89-71C.

● INDICATES FND. 5/8" IRON REBAR W/ ALUMINUM CAP, PLS 933, PARTITION PLAT 1990-6.

■ INDICATES SET 5/8" X 30" IRON REBAR W/ ALUMINUM CAP, STAMPED PLS 933

COURSE	BEARING	DISTANCE
A	S 64°09'10"E	53.02'
B	S 00°45'05"E	68.18'

CURVE	RADIUS	TANGENT	LENGTH	DELTA	DEGREE	CHORD	CH BEARING
1	705.70'	85.47'	170.11'	13°48'41"	8°07'08"	169.70'	S 57°14'49"E
2	705.70'	136.92'	270.47'	21°57'35"	8°07'08"	268.82'	S 19°59'57"E

THIS IS A TRUE AND EXACT COPY

David H. Krumbeln
DAVID H. KRUMBELN, PLS

David H. Krumbeln
MORROW COUNTY SURVEYOR

David H. Krumbeln
UMATILLA COUNTY TAX COLLECTOR