

2007-17

PARTITION REPLAT FOR LARRY DAVIS PARTITION PLAT NO. 2007-17

A PARTITION REPLAT OF PARCELS 1 AND 2
 UMATILLA COUNTY PARTITION PLAT NO. 1998-45.
 LOCATED IN THE NORTHWEST QUARTER OF SECTION 6, TOWNSHIP 4 NORTH,
 RANGE 29 EAST, W.M., UMATILLA COUNTY, OREGON.

APRIL, 2007

N.W. CORNER SEC. 6
 FD. 2 1/2" BRASS CAP
 MONUMENT PER SURVEY
 NO. 95-59-B. SEE
 PARTITION PLAT NO.
 1996-23 FOR TIE TO
 N. 1/4 CORNER SEC. 6.

OWNER'S DECLARATION &
 EASEMENT DESIGNATION

I, LARRY DEAN DAVIS, OWNER, DO HEREBY
 ACKNOWLEDGE THAT THIS PARTITION REPLAT
 WAS PREPARED WITH MY KNOWLEDGE AND
 CONSENT AND PARTITIONED IN ACCORDANCE
 WITH ORS CHAPTER 92, AS REVISED AND
 THE UMATILLA COUNTY DEVELOPMENT ORDINANCE.

I HEREBY DESIGNATE THE NEW 30 FOOT INGRESS-
 EGRESS AND UTILITY EASEMENT AND 10 FOOT UTILITY
 EASEMENT SHOWN ON THIS REPLAT AS EASEMENTS
 RESERVED FROM PARCEL 1 AND APPURTENANT TO PARCEL 2.

Larry Dean Davis
 LARRY DEAN DAVIS, OWNER

ACKNOWLEDGED BEFORE ME THIS

23 DAY OF April 23, 2007.

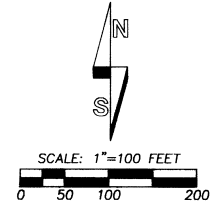
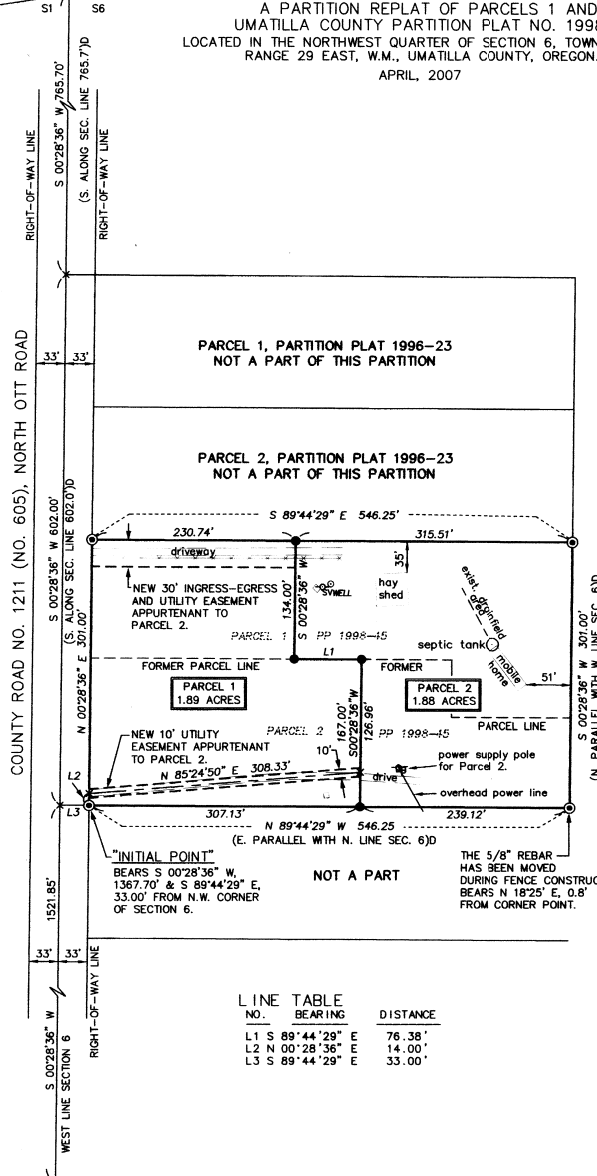
Dawn M. Tubbs #385199
 NOTARY PUBLIC FOR THE STATE OF OREGON

MY COMMISSION EXPIRES 10-14-08



LEGEND

- - SET 5/8" BY 30" IRON REBAR WITH A 1 1/4" RED PLASTIC CAP MARKED "OR PLS 1106, WA PLS 17372".
- ⊙ - FOUND 5/8" IRON PIN WITH 1 1/4" YELLOW PLASTIC CAP MARKED "OR PLS 1639", FROM UMATILLA COUNTY PARTITION PLAT NO. 1996-23.
- - FOUND MONUMENT AS NOTED.
- (XOX) - RECORD DIMENSION FROM DEED DESCRIPTION, INSTRUMENT NO. 2004-4600450, OFFICE OF COUNTY RECORDS.
- L1 - LINE TOO SHORT TO ANNOTATE, SEE LINE TABLE.



"BASIS OF BEARINGS": PARTITION PLAT NO. 1998-45.
 NOTE: COMMON DIMENSIONS SHOWN ON THIS REPLAT ARE IDENTICAL WITH THOSE OF RECORD SHOWN ON PARTITION PLAT NO. 1996-23 AND NO. 1998-45.
 SEE PARTITION PLAT NO. 1996-23 FOR SURVEY CONTROL DATA.

SURVEYOR'S CERTIFICATE AND NARRATIVE

I HEREBY CERTIFY THAT I HAVE CORRECTLY SHOWN AND MARKED WITH PROPER MONUMENTS, PARCELS 1 AND 2 OF THIS PARTITION REPLAT IN ACCORDANCE WITH ORS CHAPTER 92, AS REVISED AND THE UMATILLA COUNTY DEVELOPMENT ORDINANCE.

THE BOUNDARIES OF PARCELS 1 AND 2 ARE MONUMENTED AS SHOWN. THIS SURVEY WAS MADE AT THE REQUEST OF LARRY DAVIS. THE RECONFIGURED BOUNDARIES OF PARCELS 1 AND 2 ARE WITHIN THE BOUNDARY OF PARTITION PLAT NO. 1998-45. MONUMENTS SET UNDER PARTITION PLAT NO. 1996-23 AND 1998-45 WERE USED FOR CONTROL.

THE SURVEY WAS MADE WITH A 2 PERSON CREW USING A SOKKIA SET 4-B FIVE SECOND TOTAL STATION. MEASUREMENTS WERE MADE BY A COMBINATION OF RADIAL TIES AND CLOSED TRAVERSES. MONUMENTS WERE ESTABLISHED BY RADIAL METHODS AND VERIFIED BY SEPARATE OBSERVATIONS.

REAL PROPERTY DESCRIPTION OF PARTITIONED LANDS:

PARCELS 1 AND 2 OF UMATILLA COUNTY PARTITION PLAT NO. 1998-45, LOCATED IN THE NORTHWEST QUARTER OF SECTION 6, TOWNSHIP 4 NORTH, RANGE 29 EAST, W.M., UMATILLA COUNTY, OREGON, RECORDED AS INSTRUMENT NO. 1998-3410004, UMATILLA COUNTY OFFICE OF RECORDS.

REGISTERED PROFESSIONAL LAND SURVEYOR

William R. Wells
 WILLIAM R. WELLS, PLS

William R. Wells
 OREGON
 JULY 22, 1977
 WILLIAM R. WELLS
 1106
 RENEWS 6/30/08

I CERTIFY THAT THIS IS AN EXACT COPY OF PARTITION PLAT NO. 2007-17

William R. Wells
 WILLIAM R. WELLS, PLS

APPROVALS

UMATILLA COUNTY PLANNING COMMISSION EXAMINED AND APPROVED THIS

3rd DAY OF MAY 2007.

APPROVAL NUMBER LD-7N-B58-06

Samuel Smith
 CHAIRPERSON SECRETARY
 EXAMINED AND APPROVED THIS

26 DAY OF April 2007.

David H. Kline
 UMATILLA COUNTY SURVEYOR
 EXAMINED AND APPROVED THIS

26th DAY OF April 2007.

James Wilcox
 HERMISTON IRRIGATION DISTRICT

TAXES ARE PAID IN FULL, THIS

21st DAY OF April 2007.

Bettina Ewing
 UMATILLA COUNTY TAX COLLECTOR

RECORDING INFORMATION
 UMATILLA COUNTY CLERK:

STATE OF OREGON, COUNTY OF UMATILLA }

I certify that this instrument was received and recorded

ON May 3, 2007
 at 3:45 o'clock P.m., in the record of
 PLATS of said County.
 YEAR NUMBER Slide
 2007 17

OFFICE OF COUNTY RECORDS

By: *Jean Hemphill*, Records Officer

Fees \$ 50.00 No. 2007-5190112

WILLIAM R. WELLS, PLS
 357 N.E. HWY. 11
 P.O. BOX 1696
 PENDLETON, OR 97801
 PHONE: (541) 276-6362

DATE: 08/06 DR. BY: DMT
 CK. BY: WRW NO: 06-1088

PROJECT: VLDAMS3
 PARTITION REPLAT FOR:
 LARRY DAVIS
 A REPLAT OF PARCELS 1 & 2
 OF UMATILLA COUNTY PARTITION
 PLAT NO. 1998-45.
 LOCATED IN THE NW 1/4, SECTION 6,
 T4N., R29E., W.M.,
 UMATILLA COUNTY, OREGON.

Umatilla County Surveyor
 Date: 5-07
 Issued by: *WRW*
 No. 02-403-B