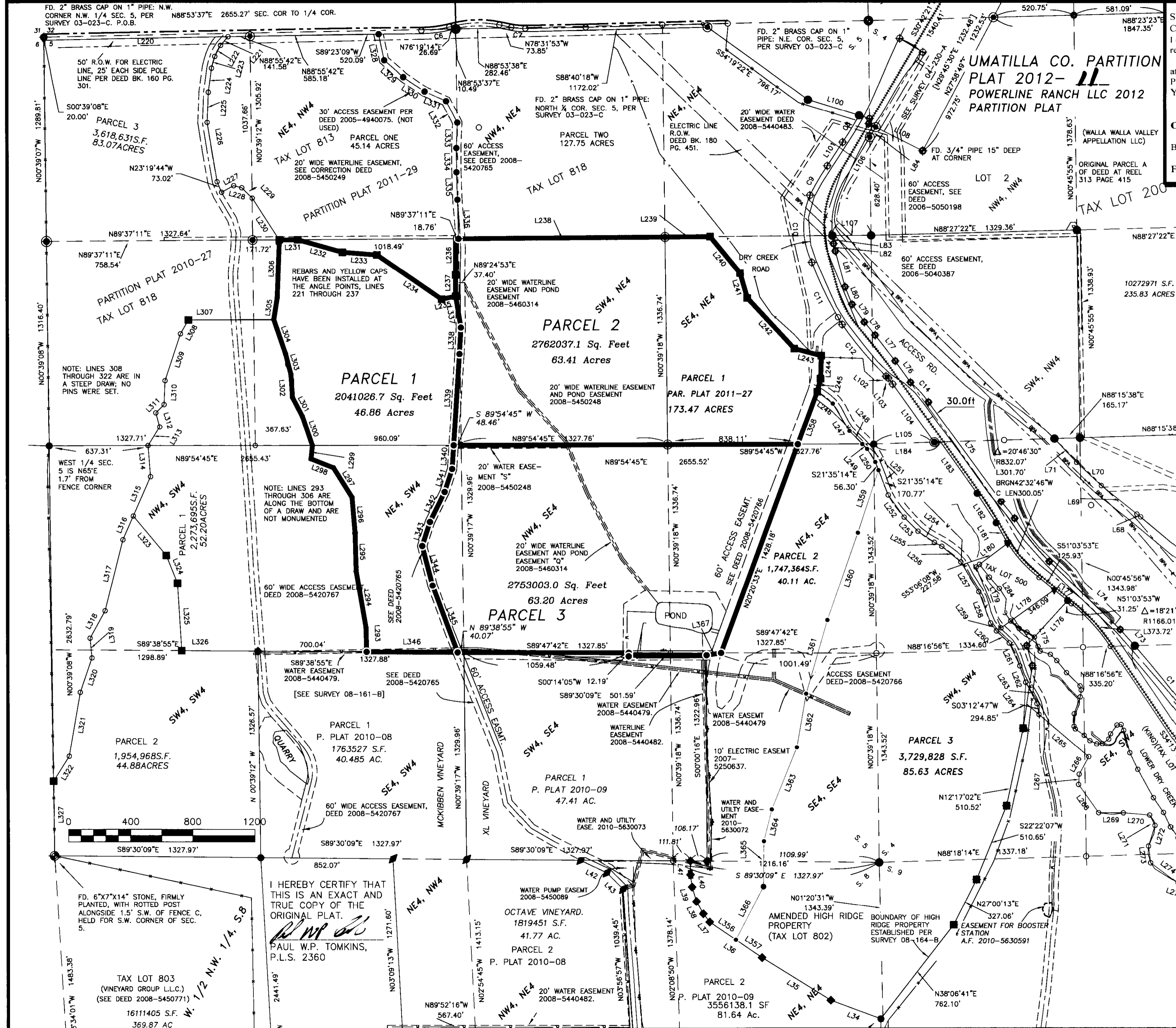


2012-11 1 of 2



STATE OF OREGON, COUNTY OF UMATILLA }
 I certify that this instrument was received and recorded ON June 1, 2012 at 1:00 o'clock P.m., in the record of PLATS of said County. YEAR NUMBER Slide 2012 11
OFFICE OF COUNTY RECORDS
 By: ...JEAN HEMPHILL...Records Officer
 Fees \$ 65.00 No. 2012-5920436

USKH
 SHARED VISION. UNIFIED APPROACH.
 Architecture • Engineering
 Land Surveying • Planning
 Environmental Services
 www.uskh.com

5 North Colville
 Walla Walla, WA 99362
 (509) 522-4843

REGISTERED PROFESSIONAL LAND SURVEYOR

[Signature]

OREGON
 JULY 26, 1988
 PAUL W.P. TOMKINS
 2360
 renew 6/19/12

Date Stamped: 5/24/12

Project:
 A PARTITION PLAT OF PARCEL 1 OF PARTITION PLAT 2011-27, BEING LOCATED IN THE SE 1/4 OF THE NW 1/4, THE NE 1/4 OF THE SW 1/4, THE SW 1/4 OF THE NE 1/4, THE SE 1/4 OF THE SE 1/4, THE NW 1/4 OF THE SE 1/4, THE SW 1/4 OF THE SE 1/4, AND THE SE 1/4 OF THE SE 1/4, ALL IN SEC. 5, T5N, R35E, W.M., UMATILLA CO. OREGON

Client
 NORM MCKIBBEN
 SEVEN VINEYARDS
 83501 LOWER DRY CR. RD.
 MILTON FREEWATER, OR

SECTION INDEX, T.5N, R.35E

	S.5	
X	X	X
X	X	X
	X	X

Project Mgr.	PWPT
Drawn	PWPT
Checked	GEF
Date	04-05-2012
Scale	1" = 400'
CAD File:	POWERLINE KLM PARTITION.DWG
Sheet Contents:	POWERLINE KLM PARTITION.DWG
Sheet No.:	1 OF 2
U.S.K.H. W.O.	1363200

I HEREBY CERTIFY THAT THIS IS AN EXACT AND TRUE COPY OF THE ORIGINAL PLAT.
[Signature]
 PAUL W.P. TOMKINS, P.L.S. 2360

RECEIVED BY
 Umatilla County Surveyor
 Date: 6/25/2012
 Recd By: J. Orla
 No: 12-091-8

UMATILLA CO. PARTITION PLAT 2012-11 POWERLINE RANCH LLC 2012 PARTITION PLAT

STATE OF OREGON, COUNTY OF UMATILLA } I certify that this instrument was received and recorded ON June 1, 2012 at 1:00 o'clock Pm., in the record of PLATS of said County. YEAR 2012 NUMBER 11 Slide 2012

OFFICE OF COUNTY RECORDS By: JEAN HEMPHILL...Records Officer Fees \$ 65.00 No. 2012-5920436

Table with columns: LINE, BEARING, DISTANCE. Contains survey data for lines L1 through L120.

Table with columns: LINE, BEARING, DISTANCE. Contains survey data for lines L121 through L219.

Table with columns: LINE, BEARING, DISTANCE. Contains survey data for lines L220 through L306.

Table with columns: LINE, BEARING, DISTANCE. Contains survey data for lines L307 through L346.

NARRATIVE: I, PAUL W.P. TOMKINS, DO HEREBY CERTIFY THAT THE SURVEY MAP HEREIN IS A TRUE AND ACCURATE SURVEY OF THOSE LANDS DESCRIBED IN THE LEGAL DESCRIPTION BELOW.

LEGAL DESCRIPTION: PARCEL 1 OF UMATILLA COUNTY PARTITION PLAT 2011-27, SAID PARTITION PLAT HAVING BEEN FILED IN THE RECORDS OF THE UMATILLA COUNTY RECORDER ON DECEMBER 16, 2011 UNDER RECORDING NO. 2011-5860151.

Table with columns: LINE, BEARING, DISTANCE. Contains survey data for lines L356 through L367.

- LEGEND: PROPOSED NEW PARCEL BOUNDARY WITH 5/8"x30" REBAR WITH YELLOW CAP "USKH-OR-2360" AT ANGLE POINT. PARCEL BOUNDARY WITH 5/8"x30" REBAR WITH YELLOW CAP "USKH-OR-2360" AT ANGLE POINT.

APPROVALS: APPROVED THIS 29 DAY OF June, 2012, IN ACCORDANCE WITH UMATILLA COUNTY DEVELOPMENT CODE. UMATILLA COUNTY PLANNING DIRECTOR. APPROVED THIS 29 DAY OF May, 2012, IN ACCORDANCE WITH THE UMATILLA COUNTY DEVELOPMENT CODE. UMATILLA COUNTY SURVEYOR.

TAX COLLECTOR'S CERTIFICATE: I HEREBY CERTIFY THAT ALL TAXES FOR THE YEAR 2011 AGAINST THE PROPERTY SHOWN HEREIN HAVE BEEN PAID.

Signature: Bettine Enright, UMATILLA COUNTY TAX COLLECTOR, DATE 5/29/2012.

OWNERS' DECLARATION: KNOW ALL MEN BY THESE PRESENTS THAT I, NORM MCKIBBEN, MANAGING PARTNER FOR POWERLINE RANCH, L.L.C., OWNER, HAVE CAUSED THESE LANDS TO BE SURVEYED AND SUBDIVIDED AS SHOWN, AND DO HEREBY DEDICATE THE PARTITION PLAT TO UMATILLA COUNTY, OREGON. Signature: Norm Mckibben, DATE 5/25/2012.

ACKNOWLEDGEMENT

STATE OF WASHINGTON COUNTY OF WALLA WALLA BEFORE ME THIS 25 DAY OF May, 2012 APPEARED NORM MCKIBBEN, MANAGING PARTNER FOR POWERLINE RANCH, L.L.C., TO ME PERSONALLY KNOWN, WHO ACKNOWLEDGED THE FOREGOING PARTITIONING OF LAND TO BE A FREE AND VOLUNTARY ACT AND DEED. WITNESS MY HAND AND OFFICIAL SEAL THIS 25 DAY OF May, 2012. My Commission Expires June 4, 2012. Signature: Paula M. Sautter-Morgan, NOTARY PUBLIC FOR THE STATE OF WASHINGTON, RESIDING IN Umatilla, OR



I HEREBY CERTIFY THAT THIS IS AN EXACT AND TRUE COPY OF THE ORIGINAL PLAT. Signature: Paul W.P. Tomkins, P.L.S. 2360

RECEIVED BY Umatilla County Surveyor Date: 6/25/2012 Rec'd By: A. Oles No.: 12-091-B

Table with columns: CURVE, RADIUS, ARC LENGTH, CHORD LENGTH, CHORD BEARING, DELTA ANGLE. Contains curve data for C1 through C14.

USKH SHARED VISION. UNIFIED APPROACH. Architecture • Engineering Land Surveying • Planning Environmental Services. 5 North Colville Walla Walla, WA 99362 (509) 522-4843. REGISTERED PROFESSIONAL LAND SURVEYOR. OREGON JULY 26, 1988 PAUL W.P. TOMKINS 2360. Date Stamped: 5/24/12.

Project: A PARTITION PLAT OF PARCEL 1 OF PARTITION PLAT 2011-27, BEING LOCATED IN THE SE 1/4 OF THE NW 1/4, THE NE 1/4 OF THE SW 1/4, THE SW 1/4 OF THE NE 1/4, THE SE 1/4 OF THE NE 1/4, THE NW 1/4 OF THE SE 1/4, THE NE 1/4 OF THE SE 1/4, AND THE SE 1/4 OF THE SE 1/4, ALL IN SEC. 5, T5N, R35E, W.M., UMATILLA CO. OREGON. Client: NORM MCKIBBEN SEVEIN VINEYARDS 83501 LOWER DRY. CR. RD. MILTON FREEWATER, OR SECTION INDEX, T.5N, R.35E

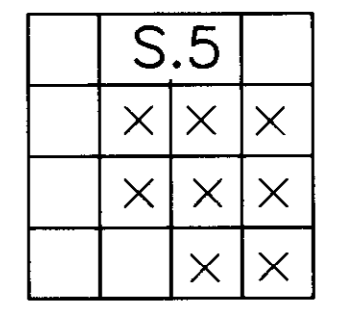


Table with columns: Project Mgr., PWPT, Drawn, PWPT, Checked, GEF, Date, 04-05-2012, Scale, 1"= 400', CAD File, POWERLINE KLM PARTITION.DWG, Sheet Contents, POWERLINE KLM PARTITION.DWG, Sheet No., 2 OF 2, U.S.K.H. W.O. 1363200