

STATE OF OREGON,
COUNTY OF UMATILLA }
I certify that this instrument was received and recorded
ON September 18, 2012
at 11:30 o'clock Am., in the record of
PLATS of said County.
YEAR NUMBER Slide
2012 16
OFFICE OF COUNTY RECORDS
By: ...JEAN HEMPHILL...Records Officer
Fees \$ 73.00 No. 2012-5960255

BASIS OF BEARINGS
BEARINGS SHOWN ARE GRID, BASED ON THE OREGON STATE PLANE COORDINATE SYSTEM, NORTH ZONE, AND DISTANCES SHOWN HAVE BEEN EXPANDED TO REPRESENT TRUE GROUND LENGTH.

UMATILLA CO. PARTITION PLAT 2012- 16
POWERLINE RANCH, LLC PARTITION PLAT

DRY CREEK COURSES AT THE TIME OF THIS SURVEY

L175	L161	L147	L133
L174	L160	L146	L132
L173	L159	L145	L131
L172	L158	L144	L130
L171	L157	L143	L129
L170	L156	L142	L128
L169	L155	L141	L127
L168	L154	L140	L126
L167	L153	L139	L125
L166	L152	L138	L124
L165	L151	L137	L123
L164	L150	L136	
L163	L149	L135	
L162	L148	L134	

USKH
SHARED VISION. UNIFIED APPROACH.
Architecture • Engineering
Land Surveying • Planning
Environmental Services
www.USKH.com

5 North Colville
Walla Walla, WA 99362
(509) 522-4843

REGISTERED PROFESSIONAL LAND SURVEYOR

Paul W.P. Tomkins

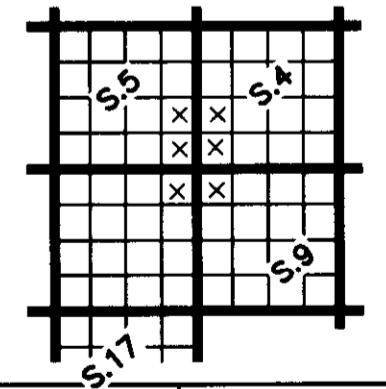
OREGON
JULY 26, 1988
PAUL W.P. TOMKINS
2360

renewed 6/30/14

Date Stamped: 9/5/12

Project:
A REPLAT OF PARCEL 3, PART. PLAT 2011-27 OF MAP 5N 35, BEING LOCATED IN THE NW 1/4 OF THE SW 1/4 AND THE SW 1/4 OF THE SW 1/4 OF SECTION 4, THE NE 1/4 OF THE SE 1/4 AND THE SE 1/4 OF THE SE 1/4 OF SECTION 5, THE NE 1/4 OF THE NE 1/4 OF SECTION 8 AND THE NW 1/4 OF SECTION 9, T5N, R35E, W.M., UMATILLA CO. OR

Client
NORM MCKIBBEN
SEVIN VINEYARDS
83501 LOWER DRY. CR. RD.
MILTON FREEWATER, OR

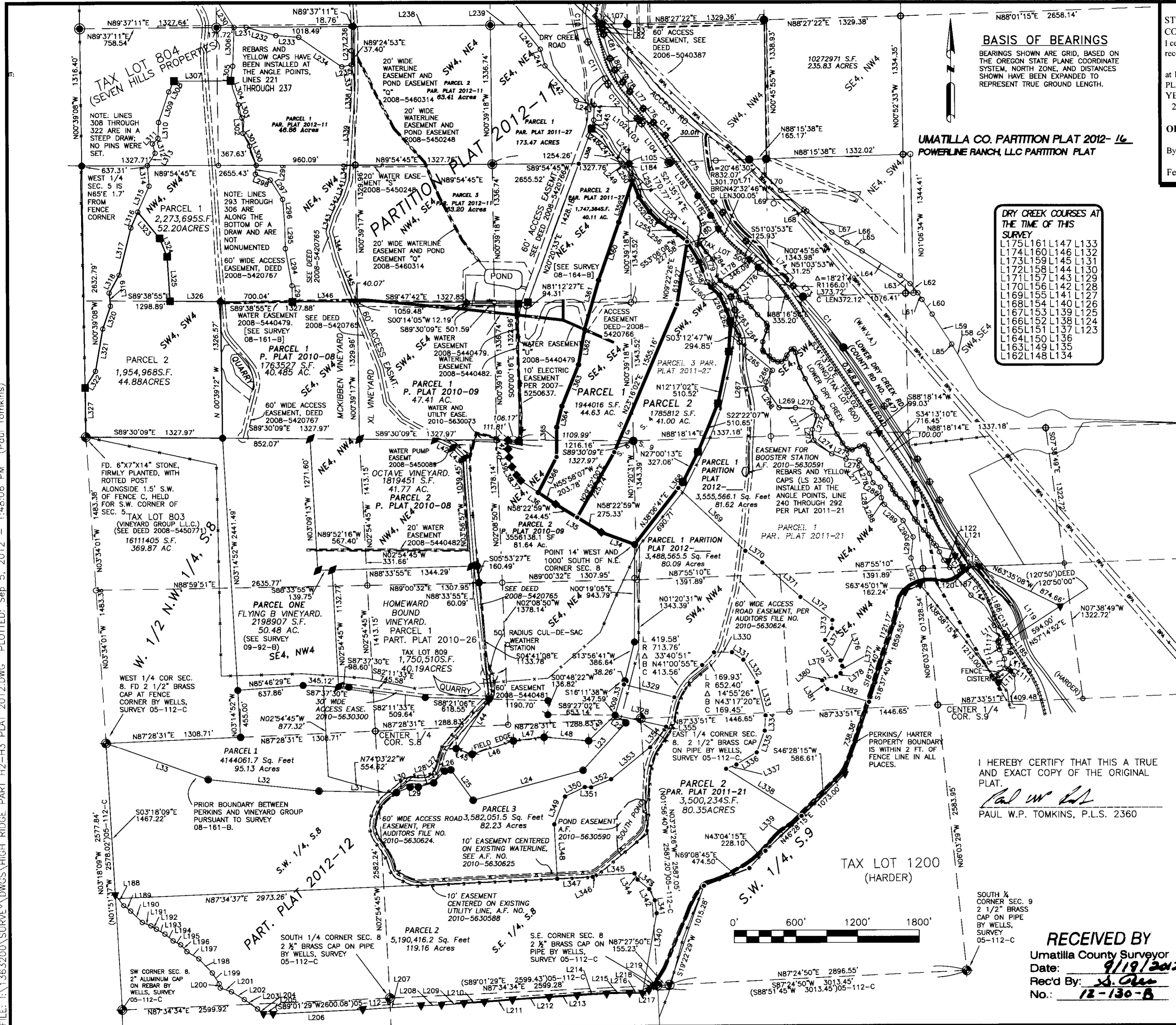


I HEREBY CERTIFY THAT THIS A TRUE AND EXACT COPY OF THE ORIGINAL PLAT.

Paul W.P. Tomkins
PAUL W.P. TOMKINS, P.L.S. 2360

RECEIVED BY
Umatilla County Surveyor
Date: 9/19/2012
Rec'd By: *S. Allen*
No.: 12-130-B

Project Mgr.	PWPT
Drawn	GEF
Checked	PWPT
Date	07-12-2012
Scale	1" = 600'
CAD File:	HIGH RIDGE PART H2-H3 PLAT 2012.DWG
Sheet Contents:	HIGH RIDGE PART H2-H3 PLAT 2012.DWG
Sheet No.:	1 OF 2
U.S.K.H. W.O.	1363200



FILE: I:\1363200\SURVEY\DWGS\HIGH RIDGE PART H2-H3 PLAT 2012.DWG PLOTTED: Sep 5, 2012 - 1:48:06 PM (Paul Tomkins)

UMATILLA CO. PARTITION PLAT 2012- 16
POWERLINE RANCH, LLC PARTITION PLAT

STATE OF OREGON, }
COUNTY OF UMATILLA }
I certify that this instrument was received and recorded

ON September 18, 2012
at 11:30 o'clock Am., in the record of
PLATS of said County.
YEAR NUMBER Slide
2012 16

OFFICE OF COUNTY RECORDS

By: ...JEAN HEMPHILL...Records Officer

Fees \$ 73.00 No. 2012-5960255



SHARED VISION. UNIFIED APPROACH.
Architecture • Engineering
Land Surveying • Planning
Environmental Services
www.USKH.com

5 North Colville
Walla Walla, WA 99362
(509) 522-4843

REGISTERED
PROFESSIONAL
LAND SURVEYOR

OREGON
JULY 26, 1988
PAUL W.P. TOMKINS
2360

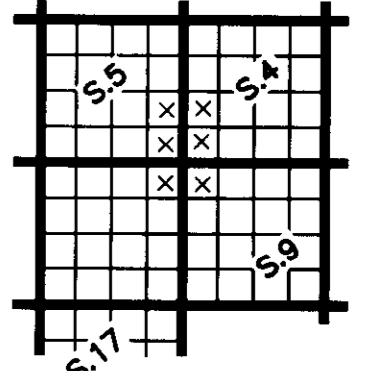
renewed 5/30/19

Date Stamped: 9/5/12

Project:
A REPLAT OF PARCEL 3, PART.
PLAT 2011-27 OF MAP 5N 35,
BEING LOCATED IN THE NW 1/4
OF THE SW 1/4 AND THE SW
1/4 OF THE SW 1/4 OF
SECTION 4, THE NE 1/4 OF
THE SE 1/4 AND THE SE 1/4 OF
THE SE 1/4 OF SECTION 5, THE
NE 1/4 OF THE NE 1/4 OF
SECTION 8 AND THE NW 1/4 OF
THE NW 1/4 OF SECTION 9,
T5N, R35E, W.M., UMATILLA CO.
OR

Client
NORM MCKIBBEN
SEVEIN VINEYARDS
83501 LOWER DRY. CR. RD.
MILTON FREEWATER, OR

SECTION INDEX, T5N, R35E



Project Mgr.	PWPT
Drawn	GEF
Checked	PWPT
Date	07-12-12
Scale	1" = 600'
CAD File:	HIGH RIDGE PART H2-H3 PLAT 2012.DWG
Sheet Contents:	HIGH RIDGE PART H2-H3 PLAT 2012.DWG
Sheet No.:	2 OF 2
U.S.K.H. W.O.	1332700

LINE	BEARING	DISTANCE
L22	S54°25'27"E	127.65'
L23	S42°12'47"W	620.64'
L24	S75°03'42"W	1104.76'
L25	N36°08'11"W	364.07'
L26	S78°49'17"W	61.10'
L27	S43°29'39"W	155.57'
L28	S75°03'48"W	153.58'
L29	S88°47'43"W	80.11'
L30	S68°40'56"W	142.37'
L31	N88°46'12"W	748.70'
L32	N84°03'33"W	1083.69'
L33	N70°26'17"W	1052.10'
L34	S69°52'31"E	342.77'
L35	S58°22'59"E	519.78'
L36	S55°58'07"E	406.93'
L37	S37°36'26"E	67.42'
L38	S28°40'47"E	91.37'
L39	S17°12'51"E	96.99'
L40	S07°23'28"E	80.10'
L41	S00°06'30"W	86.91'
L42	N64°28'17"W	187.07'
L43	N45°07'09"W	147.98'
L44	S33°47'43"W	575.64'
L45	S69°42'42"E	164.18'
L46	N71°57'52"E	422.35'
L47	N83°31'45"E	299.34'
L48	S85°15'42"E	433.93'
L49	N46°12'52"E	357.13'
L51	N70°06'32"W	40.16'
L52	N65°10'08"W	37.96'
L53	N56°44'45"W	117.29'
L54	N52°23'37"W	73.54'
L55	N49°26'47"W	34.91'
L56	N44°46'01"W	52.06'
L57	N30°17'07"W	264.60'
L58	N30°42'11"W	231.24'
L59	N33°04'10"W	341.07'
L60	N34°19'37"W	171.84'
L61	N31°59'39"W	77.26'
L62	N40°50'51"W	117.66'
L63	N49°53'41"W	125.11'
L64	N57°02'37"W	439.84'
L65	N60°31'15"W	169.01'
L66	N56°15'08"W	176.79'
L67	N50°11'52"W	317.79'
L68	N53°45'10"W	30.65'
L69	N51°34'41"W	293.08'
L70	N47°02'20"W	218.81'
L71	N43°19'48"W	209.18'
L73	N42°06'23"W	142.02'
L74	N46°19'59"W	631.53'
L75	N36°19'04"W	792.11'
L76	N35°43'08"W	168.88'
L77	N37°58'45"W	209.99'
L78	N39°35'46"W	108.67'
L79	N34°41'34"W	137.87'
L80	N21°56'36"W	121.39'
L81	N15°06'56"W	240.19'
L82	N13°19'20"W	48.52'
L83	N08°22'29"W	53.02'
L84	S30°42'19"W	74.69'
L85	S33°04'10"E	6.89'
L86	N89°39'03"W	519.68'
L87	N88°25'06"W	337.66'
L88	S83°53'06"W	120.00'
L89	S29°46'55"W	131.20'
L90	S18°46'34"W	88.45'
L91	S49°33'02"W	88.54'
L92	S68°36'38"W	96.41'
L93	S83°51'05"W	97.54'
L94	N68°05'17"W	85.10'
L95	S84°10'26"E	142.53'
L96	S71°16'39"W	60.49'
L97	S64°31'25"W	529.18'
L98	S31°11'00"E	1017.13'
L99	S87°55'28"W	381.41'
L100	S72°49'22"E	344.80'
L101	S33°10'00"W	181.08'
L102	S51°36'42"E	19.11'
L103	S35°50'31"E	47.79'
L104	S35°35'22"E	460.83'
L105	S88°15'38"W	391.08'
L106	N30°42'19"E	266.40'
L107	N89°37'11"E	249.51'
L108	S63°20'11"E	338.59'

LINE	BEARING	DISTANCE
L307	S89°37'11"W	549.81'
L308	S29°38'07"W	102.90'
L309	S18°26'06"W	316.94'
L310	S02°20'14"W	153.60'
L311	S44°59'59"W	75.30'
L312	S15°25'20"E	94.22'
L313	S31°53'27"W	142.11'
L314	S04°28'36"E	199.42'
L315	S23°50'20"W	275.18'
L316	S23°50'19"W	166.54'
L317	S14°13'15"W	471.73'
L318	S28°58'04"W	200.48'
L319	S05°31'39"E	127.59'
L320	S18°52'16"W	234.35'
L321	S09°54'34"W	415.79'
L322	S32°28'17"W	189.62'
L323	S39°56'11"E	329.38'
L324	S21°58'28"E	192.51'
L325	S03°34'35"E	434.89'
L326	S89°38'55"E	490.51'
L327	N00°39'08"W	479.80'

L110	N46°20'15"E	154.36'
L111	S50°29'22"E	26.93'
L112	S76°06'47"E	34.19'
L113	S03°57'51"E	91.02'
L114	S25°34'01"E	99.16'
L115	S14°57'43"E	20.83'
L116	N08°15'30"W	43.58'
L117	N07°02'03"E	14.32'
L118	N57°14'52"E	89.49'
L119	S32°48'20"E	46.20'
L120	S87°55'28"W	163.73'
L121	N32°45'08"W	62.77'
L122	S53°13'25"W	112.50'
L123	N38°56'42"W	31.98'
L124	N27°16'26"W	92.41'
L125	N27°43'00"W	66.44'
L126	N48°35'30"W	35.56'
L127	N24°55'15"W	54.30'
L128	N41°50'52"W	42.90'
L129	N43°53'16"W	65.31'
L130	N37°22'45"W	96.10'
L131	N43°22'38"W	42.44'
L132	N31°39'34"W	132.97'
L133	N26°10'46"W	48.76'
L134	N49°04'57"W	56.03'
L135	N46°33'06"W	70.04'
L136	N33°45'29"W	49.72'
L137	N22°54'57"W	51.21'
L138	N37°31'21"W	88.75'
L139	N38°00'24"W	112.65'
L140	N38°30'43"W	95.83'
L141	N26°10'59"W	71.91'
L142	N13°49'17"W	46.79'
L143	N32°14'58"W	48.87'
L144	S76°47'24"W	50.52'
L145	S65°02'48"W	79.44'
L146	N78°20'46"W	47.93'
L147	N40°40'37"W	70.85'
L148	N31°04'03"W	102.86'
L149	N27°57'15"W	113.00'
L150	N33°03'08"W	83.58'
L151	N25°49'44"W	102.53'
L152	N34°29'49"W	114.13'
L153	N29°04'55"W	208.55'
L154	N25°36'34"W	118.29'
L155	N15°12'22"W	150.50'
L156	N24°04'04"W	40.43'
L157	S83°03'01"W	27.24'
L158	S36°14'18"W	70.29'
L159	S19°30'37"W	35.90'
L160	S54°41'22"W	50.40'
L161	S86°57'44"W	36.65'
L162	N64°32'26"W	48.92'
L163	N46°57'24"W	49.53'
L164	N54°08'09"W	71.52'
L165	N25°57'12"W	18.43'
L166	N00°57'43"E	80.89'
L167	N19°46'49"E	114.70'
L168	N07°50'11"E	44.03'
L169	N14°21'21"W	28.00'
L170	N45°49'13"W	121.96'
L171	N38°45'17"W	100.28'
L172	N46°15'33"W	57.83'
L173	N72°36'38"W	69.26'
L174	N23°53'48"W	33.41'
L175	N20°51'33"W	64.30'
L176	N42°30'43"E	317.30'
L177	N51°03'53"W	110.65'
L178	S54°36'41"W	422.37'
L179	N22°23'56"W	423.04'
L180	N53°06'08"E	255.96'
L181	N29°31'53"W	149.88'
L182	N33°02'24"W	225.42'
L183	N35°35'22"W	403.99'
L184	S88°15'38"W	431.41'
L185	N32°48'20"W	442.70'
L186	N21°59'08"W	135.30'
L187	N42°19'08"W	73.90'
L188	S37°47'05"E	131.62'
L189	S51°03'44"E	86.45'
L190	S45°51'25"E	157.39'
L191	S68°26'18"E	89.35'
L192	S58°44'55"E	63.29'
L193	S60°04'06"E	94.52'
L194	S50°19'40"E	103.33'
L195	S63°02'44"E	82.38'
L196	S42°57'29"E	88.85'
L197	S58°49'59"E	134.64'
L198	S43°54'23"E	189.02'
L199	S32°55'19"E	122.81'
L200	S13°48'39"E	41.92'
L201	S71°00'00"E	114.81'
L202	S59°19'44"E	145.54'
L203	S54°36'02"E	157.50'
L204	S50°16'50"E	74.13'
L205	N90°00'00"E	93.65'
L206	N87°22'50"E	869.87'
L207	N86°27'26"E	566.98'
L208	N87°49'39"E	197.94'
L209	N86°34'03"E	218.51'
L210	N86°56'06"E	197.92'
L211	N85°40'45"E	273.29'
L212	N86°24'01"E	356.22'
L213	N86°25'07"E	273.22'
L214	N86°56'25"E	286.58'
L215	N88°29'32"E	223.71'
L216	S88°40'30"E	124.86'
L217	N64°17'07"E	70.08'
L218	N45°23'15"E	62.15'
L219	N87°34'34"E	38.33'

L220	N88°55'27"E	1186.05'
L221	N40°53'26"E	73.38'
L222	N27°54'44"E	79.95'
L223	N15°40'43"E	77.71'
L224	N07°55'19"E	152.29'
L225	N02°16'33"E	197.20'
L226	N09°27'08"W	386.74'
L227	S61°41'57"W	88.42'
L228	N75°31'47"W	53.65'
L229	N45°33'23"W	94.37'
L230	N33°03'22"W	318.70'
L231	S89°37'11"W	118.67'
L232	N74°24'06"W	299.21'
L233	N85°38'18"W	222.63'
L234	N55°36'04"W	506.14'
L235	S78°12'43"W	92.91'
L236	N00°16'17"E	234.21'
L237	S00°35'07"E	136.91'
L238	S89°37'11"W	1327.71'
L239	S89°37'11"W	290.58'
L240	N39°18'24"W	304.58'
L241	N15°56'43"W	167.13'
L242	N42°54'17"W	443.99'
L243	N75°11'10"W	180.41'
L244	N02°04'05"E	147.15'
L245	N14°02'39"E	86.67'
L246	N52°39'20"W	125.15'
L247	N31°13'45"W	207.62'
L248	N44°24'40"W	118.09'
L249	N44°24'40"W	43.76'
L250	N32°01'16"W	98.99'
L251	N21°35'14"W	227.06'
L252	N35°49'16"W	175.06'
L253	N44°36'17"W	128.96'
L254	N55°59'58"W	126.76'
L255	N61°35'15"W	54.46'
L256	N50°46'36"W	158.38'
L257	N31°02'27"W	223.91'
L258	N20°46'38"W	214.27'
L259	N36°02'37"W	63.74'
L260	N47°04'49"W	113.44'
L261	N24°39'46"W	162.95'
L262	N19°46'09"W	112.40'
L263	N27°53'06"W	155.32'
L264	N10°40'06"W	70.10'
L265	N49°48'13"W	420.54'
L266	N28°52'21"E	128.57'
L267	N03°37'58"E	66.42'
L268	N35°34'09"W	222.49'
L269	N89°37'23"W	159.94'
L270	N85°24'43"W	171.01'
L271	N27°38'45"W	74.83'
L272	N17°36'45"E	139.10'
L273	N07°15'48"W	108.19'
L274	N53°27'46"W	217.39'
L275	N69°29'31"W	147.17'
L276	N84°22'57"W	128.99'
L277	N38°25'41"W	162.52'
L278	N20°02'14"W	95.20'
L284	S32°40'53"E	81.97'
L286	N60°15'19"W	84.83'
L287	N04°05'08"W	103.38'
L288	N25°04'03"W	72.02'
L289	N49°17'21"W	238.76'
L290	N31°31'20"W	185.15'
L291	N05°54'59"E	204.16'
L292	N19°02'37"W	272.50'
L293	N01°23'50"W	156.89'
L294	N09°51'57"W	367.08'
L295	N01°29'14"W	246.06'
L2		