

Approved this 1<sup>st</sup> day of July, 1905.  
 O. P. Strain  
 County Assessor.

Approved this 1<sup>st</sup> day of July, 1905.  
 John W. Kimball  
 County Surveyor,  
 for Umatilla County, Oregon.

State of Oregon } ss.  
 County of Umatilla }

I, Frank Salving, County Clerk of Umatilla County, State of Oregon, and ex-officio Clerk of the County Court, do hereby certify that the within plat has been approved by the County Court.  
 In testimony whereof, I have set my hand and the seal of said Court, this the 1<sup>st</sup> day of July, 1905.

County Court  
 Umatilla County,  
 State of Oregon

Frank Salving, Clerk  
 By T. H. Powers, Deputy

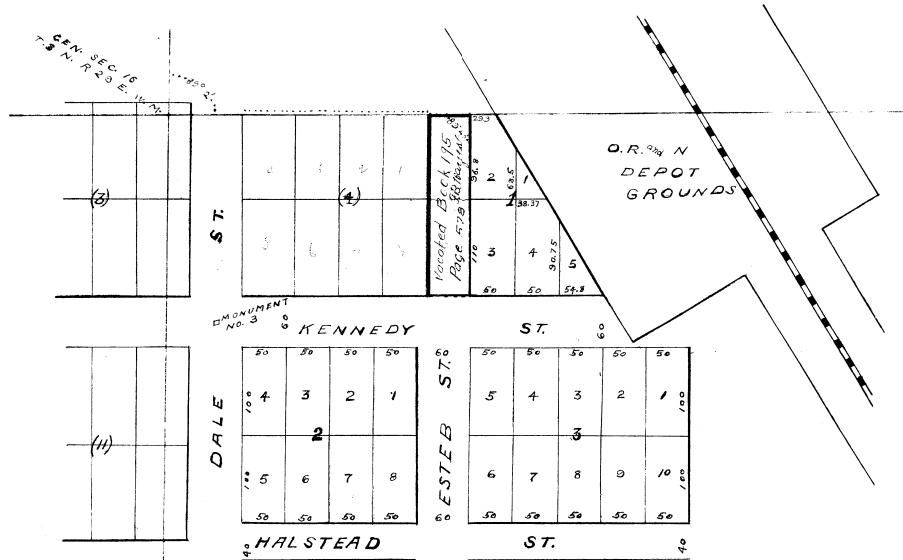
MAP OF  
**HALSTEAD'S SECOND ADDITION**

TO THE  
 TOWN OF **ECHO**, OREGON

MAY 30<sup>TH</sup> 1905

Scale 100 Ft. = 1 Inch

GEARY KIMBRELL CIV. ENG.



Know all men by these presents that I, Joel Halstead and wife, Emma Halstead do grant and convey to the City of Echo a corporation for public use all streets marked on this plat, to have and to hold for the use of the public as highways -

In witness whereof we have hereunto set our hand and seal, this the 13<sup>th</sup> day of June, 1905.

Signed and sealed and delivered in presence of

John Darr  
 Mona Houser } Witnesses

Joel Halstead  
 Emma Halstead

State of Oregon } ss.  
 County of Umatilla }

This certifies that on this the 13<sup>th</sup> day of June 1905, before me the undersigned a Justice of the Peace in the said County and State personally appeared the within Joel Halstead and wife Emma Halstead who are known to me to be the identical persons described in and who executed the within instrument, and acknowledged to me that they executed the same freely and voluntarily for the uses and purposes therein named. In testimony whereof I have hereunto set my hand and official seal this day and year last above written.

John Darr  
 Justice of the Peace for Oregon

STATE OF OREGON, } ss.  
 County of Umatilla, }

This instrument was filed for record on the 2<sup>nd</sup> day of July, A. D. 1905, at 11:00 clock A. M. and duly recorded in Vol. 2 of Plat.

Page 65

By *John Darr* Recorder  
 By *John W. Kimball* Surveyor