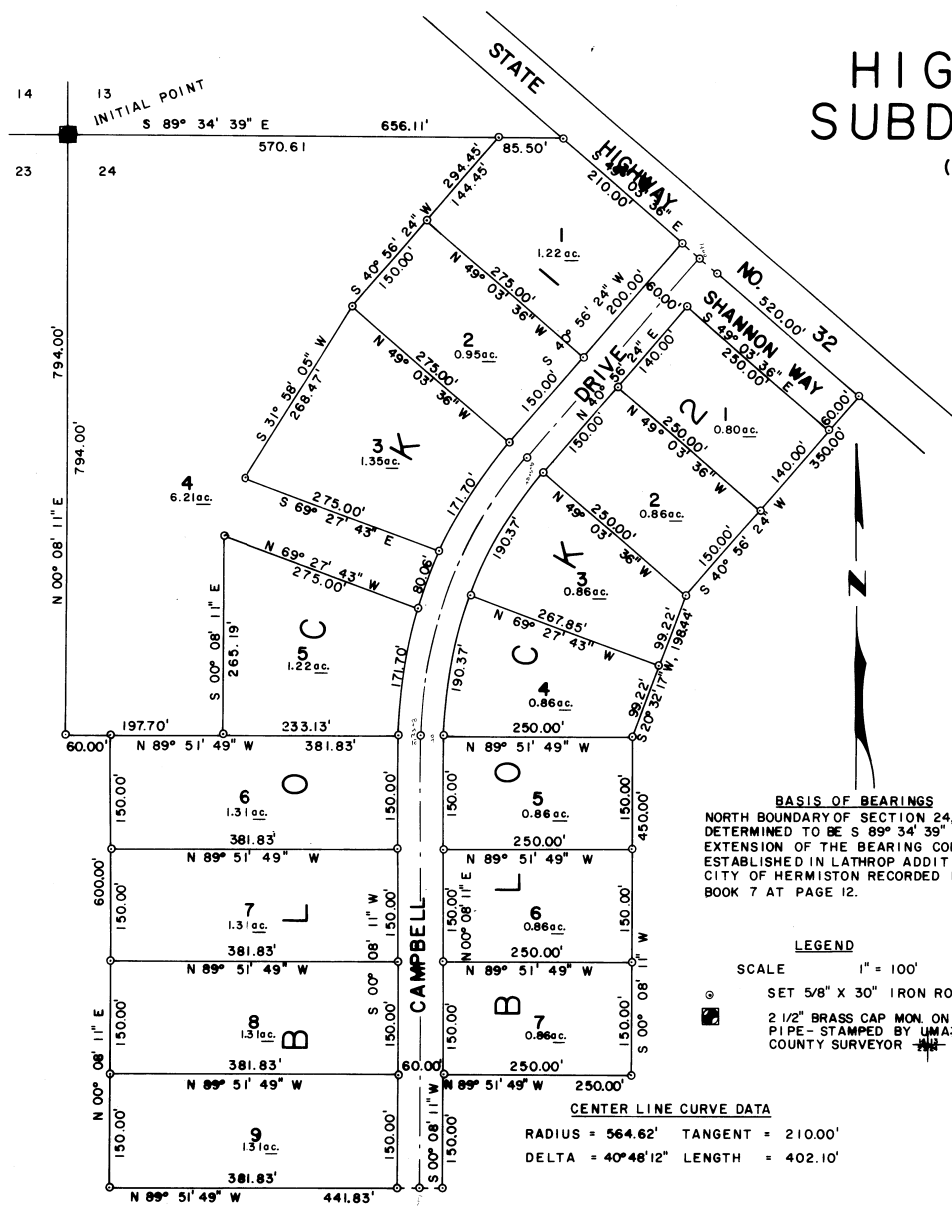


HIGHLANDER CENTER SUBDIVISION — UNIT ONE

(A PLANNED UNIT DEVELOPMENT TO THE CITY OF HERMISTON, UMATILLA COUNTY, OREGON)

STATE OF OREGON,
COUNTY OF UMATILLA, } ss
I, Jessie M. Bell, County Clerk, certify that
this instrument was received and recorded
ON Apr. 12, 1975
at 11:22 a.m. o'clock P.M. in the record
of Umatilla County of said County in
Book 10 Page 28

JESSIE M. BELL
County Clerk
By Notary (Signature) Deputy
Fees \$ 10.00 No. 208990



BASIS OF BEARINGS
NORTH BOUNDARY OF SECTION 24, T2N R30E DETERMINED TO BE S 89° 34' 39" E BY THE EXTENSION OF THE BEARING CONTROL AS ESTABLISHED IN LATHROP ADDITION TO CITY OF HERMISTON RECORDED IN PLAT BOOK 7 AT PAGE 12.

LEGEND
SCALE 1" = 100'
○ SET 5/8" X 30" IRON RODS.
■ 2 1/2" BRASS CAP MON. ON 1 1/2" PIPE - STAMPED BY UMATILLA COUNTY SURVEYOR

CENTER LINE CURVE DATA
RADIUS = 564.62' TANGENT = 210.00'
DELTA = 40° 46' 12" LENGTH = 402.10'

DEDICATION:

KNOW ALL MEN BY THESE PRESENTS: THAT THE UNDERSIGNED, OFFICERS, FOR CAMPBELL DEVELOPMENT INC., OWNERS OF THE LAND SHOWN ON THE ACCOMPANYING PLAT, DO HEREBY DEDICATE TO THE USE OF THE PUBLIC FOREVER THE STREETS, DRIVES AND WAYS DESIGNATED ON SAID PLAT AND A 5' UTILITY EASEMENT ADJACENT TO ALL LOT LINES. THAT THE UNDERSIGNED OFFICERS DO HEREBY ESTABLISH AND ACKNOWLEDGE THE ACCOMPANYING PLAT AS THE OFFICIAL MAP AND PLAT OF HIGHLANDER CENTER SUBDIVISION — UNIT ONE, UMATILLA COUNTY, OREGON.

amy d. campbell
PRESIDENT

STATE OF OREGON, } ss
COUNTY OF UMATILLA, }
ON THIS 10 DAY OF September, 1975, APPEARED PERSONALLY THE OFFICERS OF CAMPBELL DEVELOPMENT INC., WHO ARE KNOWN TO ME TO BE THE IDENTICAL INDIVIDUALS WHO EXECUTED THE PLAT DEDICATION AND ACKNOWLEDGED TO ME THAT THEY EXECUTED THE SAME FREELY AND VOLUNTARILY.

Theresa E. Owen MY COMMISSION EXPIRES: 4/19/79
NOTARY PUBLIC FOR OREGON

ENGINEER'S CERTIFICATE

I, THOMAS F. LAGIER, BEING FIRST DULY SWORN, DO DEPOSE AND SAY THAT I AM A DULY REGISTERED ENGINEER OF THE STATE OF OREGON, AND THAT I HAVE CORRECTLY SURVEYED AND MARKED WITH LEGAL MONUMENTS THE LAND REPRESENTED ON THE ACCOMPANYING PLAT, THE BOUNDARIES DESCRIBED AS: BEGINNING AT THE NORTHWEST CORNER OF SECTION 24, T4N, R20E, W.M.; THENCE S 89° 34' 39" E ALONG THE NORTH LINE OF SAID SECTION 24, 656.11 FEET TO THE INTERSECTION WITH THE SOUTHWESTERLY BOUNDARY OF OREGON STATE HIGHWAY NO. 32 RIGHT OF WAY; THENCE S 49° 03' 36" E ALONG THE STATE HIGHWAY RIGHT OF WAY BOUNDARY 520.00 FEET; THENCE S 40° 56' 24" W, 350.00 FEET; THENCE S 20° 32' 17" W, 198.44 FEET; THENCE S 00° 08' 11" W, 450.00 FEET; THENCE S 89° 51' 49" W, 250.00 FEET; THENCE S 00° 08' 11" W, 150.00 FEET; THENCE N 89° 51' 49" W, 441.83 FEET; THENCE N 00° 08' 11" E, 600.00 FEET; THENCE N 89° 51' 49" W, 60.00 FEET; THENCE N 00° 08' 11" E, 794.00 FEET TO THE POINT OF BEGINNING.

REGISTERED PROFESSIONAL SURVEYOR
THOMAS F. LAGIER

Thomas F. Lagier
THOMAS F. LAGIER

SUBSCRIBED AND SWORN TO BEFORE ME THIS 10 DAY OF Dec., 1975
Theresa E. Owen
NOTARY PUBLIC FOR OREGON
MY COMMISSION EXPIRES 4/19/79

CITY OF HERMISTON PLANNING COMMISSION

THE ACCOMPANYING PLAT IS HEREBY APPROVED BY RESOLUTION AND ADOPTED ON THIS
10TH DAY OF DECEMBER, 1975, AND APPROVAL DULY FILED.

James M. Cooper
CHAIRMAN

Arthur J. Mulhouse
SECRETARY

CITY ENGINEER

APPROVED THIS 30TH DAY OF DECEMBER,

Richard S. Matthews PE
CITY ENGINEER

HERMISTON CITY COUNCIL

THE ACCOMPANYING PLAT IS HEREBY APPROVED BY RESOLUTION AND ADOPTED ON THIS
10TH DAY OF DECEMBER, 1975, AND APPROVAL DULY FILED.

L. P. Gray
MAYOR

UMATILLA COUNTY ASSESSOR AND TAX COLLECTOR

I, RODNEY W. ESSELSTYN AND I, D. L. BRAAT, RESPECTIVELY ASSESSOR AND TAX COLLECTOR
OF UMATILLA COUNTY, OREGON, EACH HEREBY CERTIFY THAT WE HAVE EXAMINED THE TAX
RECORDS RELATIVE TO THE LAND COVERED BY THE ACCOMPANYING PLAT, AND THAT ALL
MONIES DUE FOR STATE AND COUNTY TAXES AND ASSESSMENTS THAT COULD NOW CONSTITUTE
A LIEN ON SAID LAND HAVE BEEN PAID AND WE HEREBY APPROVE SAID PLAT, DATED THIS
9TH DAY OF April, 1976.

Rodney W. Esselstyn
COUNTY ASSESSOR

D. L. Braat
COUNTY TAX COLLECTOR

UMATILLA COUNTY COMMISSION

THIS IS TO CERTIFY THAT THE ACCOMPANYING PLAT IS APPROVED FOR FILING AND
PLACED IN THE RECORD OF TOWN PLATS OF UMATILLA COUNTY, OREGON, BY THE UNDERSIGNED BY
ITS ORDER DATED THE 9TH DAY OF April, 1976, AND RECORDED IN THE COUNTY JOURNAL
PAGE .

Conrad K. Smith
CHAIRMAN

Barbara Lynch
COMMISSIONER

COMMISSIONER

UMATILLA COUNTY CLERK

ATTEST:
I, JESSIE M. BELL, COUNTY CLERK OF UMATILLA COUNTY, OREGON DO HEREBY CERTIFY
THAT THE ABOVE NAMED WERE ON THE DATE OF SAID ORDER ABOVE SPECIFIED AND ARE
NOW THE DULY QUALIFIED, ELECTED, SWORN AND ACTING CHAIRMAN AND COMMISSIONERS OF
SAID COUNTY; THAT THE ABOVE SIGNATURES ARE THE GENUINE SIGNATURES THEREOF AND
THE SEAL HERETO AFFIXED IS THE SEAL OF MY OFFICE

Jessie M. Bell
COUNTY CLERK

