

STATE OF OREGON, COUNTY OF UMATILLA, I, Jesse M. Bell, County Clerk, certify that this instrument was received and recorded on DEC. 13, 1977

at 01:24 o'clock A.M. in the record of Town Plats of said County in Book 11 Page 24

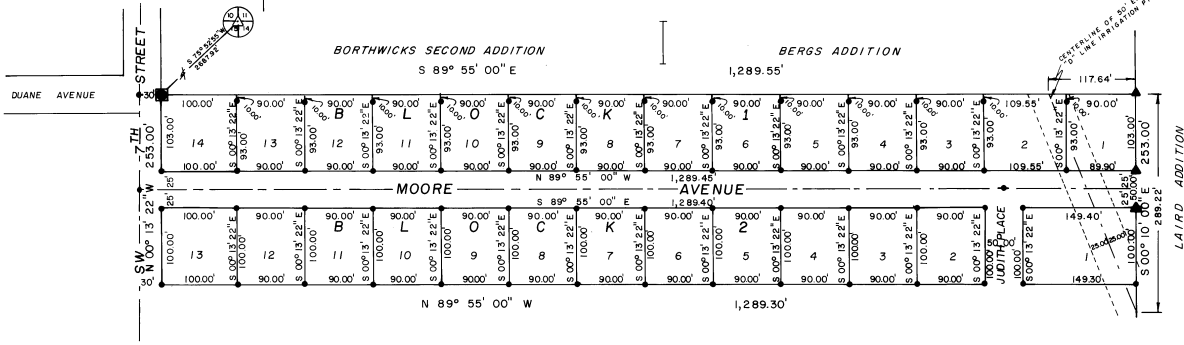
JESSIE M. BELL County Clerk By Betty Browning Deputy Fees \$11.50 No. 31988

LINDA ESTATES SUBDIVISION TO THE CITY OF HERMISTON, UMATILLA COUNTY, OREGON

BASIS OF BEARING North boundary of NE1/4 of Section 15 is assumed to bear N 89° 55' 00" W as established in LAIRD and BERGS ADDITIONS. SCALE 1" = 100'

- LEGEND Set 5/8" X 30" Iron rods. Found 5/8" Iron rod monument of record. INITIAL POINT 6" X 6" X 24" concrete monument with a 2" brass cap.

APPROVALS CITY OF HERMISTON PLANNING COMMISSION The accompanying plat is hereby approved by resolution and adopted on this 14th day of SEPTEMBER, 1977 and approval duly filed. Bernard D. Cooper, Chairman. CITY ENGINEER Approved this 21st day of SEPTEMBER, 1977. Patrick D. McArthur, City Engineer. HERMISTON CITY COUNCIL The accompanying plat is hereby approved by resolution and adopted on this 26th day of SEPTEMBER, 1977 and approval duly filed. L.P. Gray, Mayor. HERMISTON IRRIGATION DISTRICT The accompanying plat is hereby approved by resolution and adopted on this 11th day of October, 1977 and approval duly filed. Eugene A. Thompson, Chairman.



ENGINEERS CERTIFICATE

STATE OF OREGON) COUNTY OF UMATILLA) SS I, Thomas F. Lagier, being first duly sworn, do depose and say that I am a duly registered engineer of the State of Oregon, and that I have correctly surveyed and marked with legal monuments the land represented on the above plat:

Commencing at the NW corner of the NE1/4 of Section 15, T4N, R28E, W4; Thence S 00° 13' 22" E, 655.44 feet to the NW corner of the S1/2 of the NW1/4 of the NE1/4; Thence S 89° 55' 00" E, 30.00 feet to the actual point of beginning which is the INITIAL POINT; Thence S 89° 55' 00" E, 1289.55 feet; Thence S 00° 10' 00" E, 253.00 feet; Thence N 89° 55' 00" W, 1289.30 feet; Thence N 00° 13' 22" W, 253.00 feet to the INITIAL POINT; said INITIAL POINT being located S 75° 52' 55" W, 2687.92 feet from the NE corner of said Section 15.



Thomas F. Lagier

Subscribed and sworn before me this 13 day of December, 1977.

Notary Public for Oregon My commission expires 4/9/79

DEDICATION

STATE OF OREGON) COUNTY OF UMATILLA) SS Be it hereby known by these presents that the undersigned does hereby establish and acknowledge the accompanying plat as the official map and plat of LINDA ESTATES SUBDIVISION to the City of Hermiston, Umatilla County, Oregon, and that the undersigned owner of the land on the accompanying plat does hereby dedicate to the use of the public forever the streets and avenues designated on said plat, together with a 6.00 foot utility easement adjacent to said street and avenue rights of way.

Roland Haertl Ethel F. Neace

STATE OF OREGON) COUNTY OF UMATILLA) SS Be it remembered that on this 9th day of December, 1977 personally appeared before me Ethel F. Neace, who is known to me to be the identical person described in and who executed the above instrument and who acknowledged to me that she executed the same freely and voluntarily.

Be it remembered that on this 12 day of December, 1977 personally appeared before me Roland Haertl, who is known to me to be the identical person described in and who executed the above instrument and who acknowledged to me that he executed the same freely and voluntarily.

Notary Public of Oregon My commission expires 8-25-1979

UMATILLA COUNTY ASSESSOR AND TAX COLLECTOR I, James T. White Sr. and I, D. L. Bratt, respectively Assessor and Tax Collector of Umatilla County, Oregon, each hereby certify that we have examined the tax records relative to the land covered by the accompanying plat, and that all monies due for state and county taxes and assessments that could now constitute a lien on said land have been paid and we hereby approve said plat, dated this 12th day of DECEMBER, 1977.

James T. White Sr. Assessor D. L. Bratt Tax Collector

UMATILLA COUNTY COMMISSION This is to certify that the accompanying plat is approved for filing and placed in the record of town plats of Umatilla County, Oregon, by the undersigned by its order dated the 12 day of December, 1977, and recorded in the County Journal, page 24.

Chairman Commissioner Commissioner

UMATILLA COUNTY CLERK ATTEST: I, Jesse M. Bell, County Clerk of Umatilla County, Oregon, do hereby certify that the above named were on the date of said order above specified and are now the duly qualified, elected, sworn and acting chairman and commissioners of said county; that the signatures are the genuine signatures thereof and the seal hereto affixed is the seal of my office.

Jesse M. Bell, County Clerk

