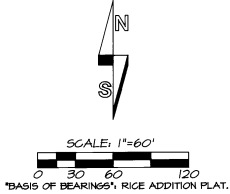


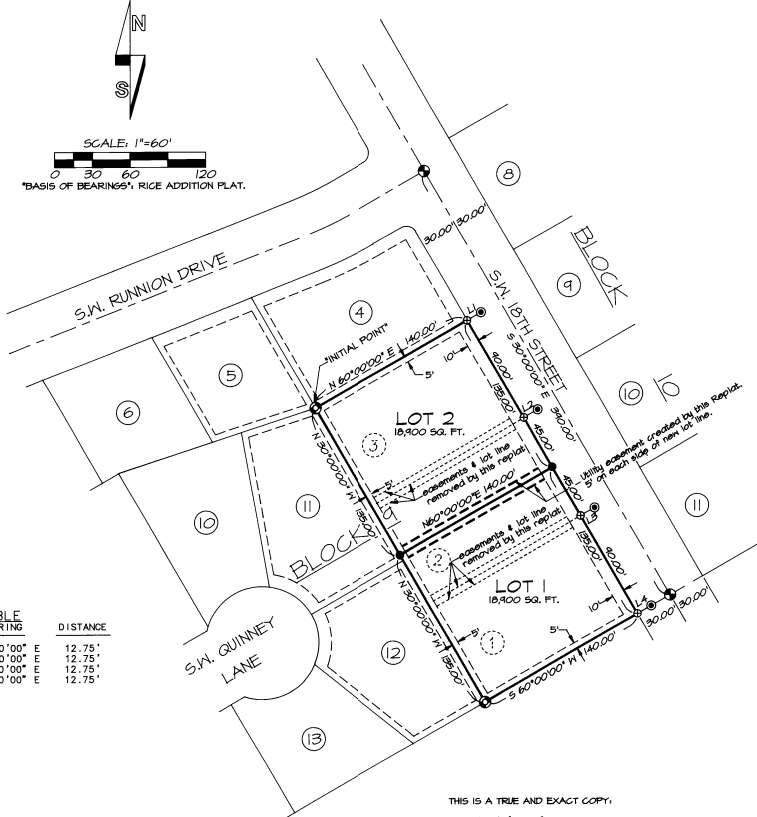
R & H ADDITION
 A REPLAT OF LOTS 1, 2 AND 3, BLOCK 9, RICE ADDITION,
 CITY OF PENDELTON, UMATILLA COUNTY, OREGON.
 LOCATED IN THE SOUTHWEST 1/4 OF SECTION 15, TOWNSHIP 2 NORTH, RANGE 32 EAST, 11M.
 FEBRUARY, 2001

LEGEND

- - SET 5/8" BY 30" IRON REBAR WITH 1/2" YELLOW PLASTIC CAP MARKED "OR PLS 1106, WA PLS 17812".
- ⊕ - FOUND RAILROAD SPIKE MARKED "106" IN STREET, FROM UMATILLA COUNTY SURVEY NO. 96-176-C.
- ⊙ - FOUND 5/8" IRON REBAR WITH 1/2" YELLOW PLASTIC CAP MARKED "OR PLS 1106 WA PLS 17812", FROM UMATILLA COUNTY SURVEY NO. 96-176-C.
- ⊙ - FOUND LEAD PLUG IN GUTTER LINE WITH 3/4" BRASS WASHER STAMPED "PLS 1106", FROM UMATILLA COUNTY SURVEY NO. 96-176-C.
- ⊕ - CALCULATED POINT ONLY, NOT SET OR FOUND.
- Ⓢ - INDICATE LOT NUMBERS, BLOCKS 4 & 10, RICE ADDITION PLAT.
- Ⓢ - INDICATES OLD LOT NUMBERS IN BLOCK 9, REPLACED BY THIS REPLAT.
- easement line
- - - INDICATES UTILITY EASEMENT TO REMAIN AFTER REPLAT, WIDTH INDICATED.
- L6 - LINE TOO SHORT TO ANNOTATE, SEE LINE TABLE.



LINE NO.	BEARING	DISTANCE
L1	N 60°00'00" E	12.75'
L2	N 60°00'00" E	12.75'
L3	N 60°00'00" E	12.75'
L4	N 60°00'00" E	12.75'



THIS IS A TRUE AND EXACT COPY.
William R. Wells
 WILLIAM R. WELLS, PLS

OWNER'S DECLARATION & DEDICATION:

R & H LEASING, A PARTNERSHIP, AND KATHRYN R. CAVALLO, OWNERS OF THE LAND SHOWN IN THE ACCOMPANYING REPLAT, DO HEREBY ESTABLISH AND ACKNOWLEDGE THIS PLAT AS THE OFFICIAL MAP AND PLAT OF R & H ADDITION, A REPLAT OF LOTS 1, 2, AND 3, BLOCK 9, OF THE RICE ADDITION TO THE CITY OF PENDELTON. UTILITY EASEMENTS INDICATED ON THE PLAT OF RICE ADDITION ARE TO REMAIN IN PLACE WITH THE FOLLOWING EXCEPTIONS:
 THE 5 FOOT UTILITY EASEMENTS ALONG THE LOT LINE COMMON TO LOTS 1 AND 2, BLOCK 9, RICE ADDITION, AND LOTS 2 AND 3, BLOCK 9, RICE ADDITION, 5 FEET ON EACH SIDE OF COMMON LOT LINES ARE HEREBY DELETED BY THIS REPLAT.
 WE HEREBY DEDICATE THE NEW 5 FOOT UTILITY EASEMENTS, 5 FEET ON EACH SIDE OF THE COMMON LOT LINES ALONG THE COMMON LINE BETWEEN NEW LOTS 1 & 2 OF THIS REPLAT, FOR PUBLIC USE.

R & H LEASING, A PARTNERSHIP, OWNER OF LOTS 2 & 3, BLOCK 9, RICE ADDITION, BY:

Russell Strandholm
 RUSSELL STRANDHOLM, PARTNER
Kathryn R. Cavallo
 KATHRYN R. CAVALLO, OWNER OF LOT 1, BLOCK 9, RICE ADDITION.

SUBSCRIBED AND SWORN BY ME THIS 19 DAY OF

February, 2001.

Dawn M. Tibbes
 DAWN M. TIBBES
 NOTARY PUBLIC FOR THE STATE OF OREGON

MY COMMISSION EXPIRES: 10-14-2004



SURVEYOR'S CERTIFICATE

I, WILLIAM R. WELLS, A PROFESSIONAL LAND SURVEYOR IN THE STATE OF OREGON, DO HEREBY CERTIFY THAT I HAVE CORRECTLY SURVEYED AND MARKED WITH LEGAL INCORPORATION IN ACCORDANCE WITH O.R.S. CHAPTER 42, AS REVISED, THE LANDS SHOWN ON THE ACCOMPANYING PLAT OF R & H ADDITION, A REPLAT OF LOTS 1, 2 AND 3, BLOCK 9, RICE ADDITION TO THE CITY OF PENDELTON.

LEGAL DESCRIPTION

LOTS 1, 2 AND 3, BLOCK 9, RICE ADDITION TO THE CITY OF PENDELTON, UMATILLA COUNTY, OREGON, AS RECORDED IN BOOK 12, PAGE 10, "RECORD OF TOWN PLATS".

William R. Wells
 WILLIAM R. WELLS, PLS

REGISTERED PROFESSIONAL LAND SURVEYOR
William R. Wells
 OREGON
 JULY 22, 1977
 WILLIAM R. WELLS
 1106
 RENEWS 8/30/02

RECORDING INFORMATION
 OFFICE OF COUNTY RECORDS

STATE OF OREGON,
 COUNTY OF UMATILLA }
 I certify that this instrument was received and recorded
 ON March 1, 2001
 at 9:25 o'clock Am., in the record of
 PLATS of said County.
 BOOK PAGE Slide
 14 20

OFFICE OF COUNTY RECORDS

By: GEORGIA DUNAWAY Records Officer
 Fees \$ 50.00 No. 2001-3830663

APPROVALS:

CITY OF PENDELTON
 PLANNING DEPARTMENT
 THE ACCOMPANYING PLAT IS HEREBY APPROVED THIS
21st DAY OF February, 2001.

RP01-01
 APPROVAL NUMBER
Russell Strandholm
 CITY OF PENDELTON PLANNING DIRECTOR
 CITY SURVEYOR

I, CITY OF PENDELTON SURVEYOR, DO HEREBY CERTIFY THAT I HAVE EXAMINED THE ACCOMPANYING REPLAT, THAT IT COMPLIES WITH THE STATUTES OF THE STATE OF OREGON AND THE CITY OF PENDELTON WITH REFERENCE TO THE FILING AND RECORDING OF SAID PLATS, AND I HEREBY APPROVE SAID PLAT.

DATED THIS 21 DAY OF Feb, 2001.
James Cole
 CITY OF PENDELTON SURVEYOR

UMATILLA COUNTY

UMATILLA COUNTY SURVEYOR
 I, UMATILLA COUNTY SURVEYOR, DO HEREBY CERTIFY THAT I HAVE EXAMINED THE ACCOMPANYING REPLAT, THAT IT COMPLIES WITH THE LAWS OF THE STATE OF OREGON WITH REFERENCE TO THE FILING AND RECORDING OF SUCH PLATS, AND I HEREBY APPROVE SAID PLAT FOR THE APPROVAL OF THE COUNTY COMMISSIONERS OF UMATILLA COUNTY, OREGON.

DATED THIS 19 DAY OF February, 2001.
David Hillen
 UMATILLA COUNTY SURVEYOR

UMATILLA COUNTY COMMISSIONERS

THIS IS TO CERTIFY THAT THE ACCOMPANYING REPLAT IS APPROVED FOR FILING AND RECORDING IN THE "RECORD OF TOWN PLATS" OF UMATILLA COUNTY, OREGON, BY THE UNDERSIGNED, BY ITS ORDER.

DATED THIS 28th DAY OF February, 2001.
James J. DeLoach Chairman
Emily M. Johnson Commissioner
William S. Hamell Commissioner

ASSESSOR AND TAX COLLECTOR
 WE THE ASSESSOR AND THE TAX COLLECTOR OF UMATILLA COUNTY, OREGON, DO HEREBY CERTIFY THAT WE HAVE EXAMINED THE TAX RECORDS RELATIVE TO THE LAND COVERED BY THE ACCOMPANYING REPLAT AND THAT ALL MONIES DUE FOR STATE AND COUNTY TAXES AND ASSESSMENTS THAT COULD CONSTITUTE A LIEN ON SAID LAND HAVE BEEN PAID AND WE HEREBY APPROVE SAID PLAT.

DATED THIS 26th DAY OF February, 2001.
Paul Chalmers County Assessor
Shirley Winburn County Tax Collector
 Assessment Mgr.

WILLIAM R. WELLS, PLS
 357 N.E. HWY. 11
 P.O. BOX 1696
 PENDELTON, OR 97801
 PHONE: (541) 276-6362

DATE: 12/00 DR. BY: DHT
 CK. BY: PRM NO: 00-149

PROJECT:
R & H ADDITION
 A REPLAT OF LOTS 1, 2 AND 3
 BLOCK 9, RICE ADDITION
 FOR:
RUSS STRANDHOLM
 LOCATED IN THE SOUTHWEST 1/4 OF
 SECTION 15, TOWNSHIP 2 NORTH, RANGE
 32 EAST, 11M., UMATILLA COUNTY, OREGON.