

PENDLETON HOMES, PHASE I  
AN ADDITION TO THE CITY OF PENDLETON, OREGON.  
A SUBDIVISION OF PARCEL 2 OF UMATILLA COUNTY  
PARTITION PLAT NO. 2011-09, SITUATED IN THE  
NW 1/4 OF SECTION 15, T2N., R32E., W.M.,  
UMATILLA COUNTY, OREGON.  
SHEET 1 OF 4

PLAT SHEET INDEX

- SHEET 1 OF 4 - PLAT SHEET INDEX.
- SHEET 2 OF 4 - ANNOTATION OF OVERALL PLAT BOUNDARY AND LOT 33.
- SHEET 3 OF 4 - ANNOTATION OF LOTS 1 THROUGH 32, PUBLIC UTILITY EASEMENTS AND STREETS.
- SHEET 4 OF 4 - APPROVALS, SURVEYORS CERTIFICATE & NARRATIVE & OWNERS DECLARATION & DEDICATION.

RECORDING INFORMATION  
UMATILLA COUNTY OFFICE OF RECORDS:

STATE OF OREGON, }  
COUNTY OF UMATILLA }  
I certify that this instrument was received and recorded

ON June 24, 2014  
at 11:27 o'clock Am., in the record of  
PLATS of said County.

BOOK	PAGE	Slide
15	92	

OFFICE OF COUNTY RECORDS  
By: ...Steve Churchill...Records Officer  
Fees \$ 88.00 No. 2014-6180215

RECEIVED BY  
Umatilla County Surveyor  
Date: 06/25/2014  
Rec'd By: G. Hensley  
No.: 14-098-B

I CERTIFY THIS IS AN EXACT COPY OF SHEET 1 OF 4 OF PENDLETON HOMES, PHASE I.

*Will. R. Wells*  
WILLIAM R. WELLS, PLS

REGISTERED  
PROFESSIONAL  
LAND SURVEYOR

*Will. R. Wells*

OREGON  
JULY 22, 1977  
WILLIAM R. WELLS  
1106  
RENEWS 6/30/16

WELLS SURVEYING  
1 SW NYE AVENUE, SUITE B  
P.O. BOX 1696  
PENDLETON, OR 97801  
PHONE: (541) 276-6362

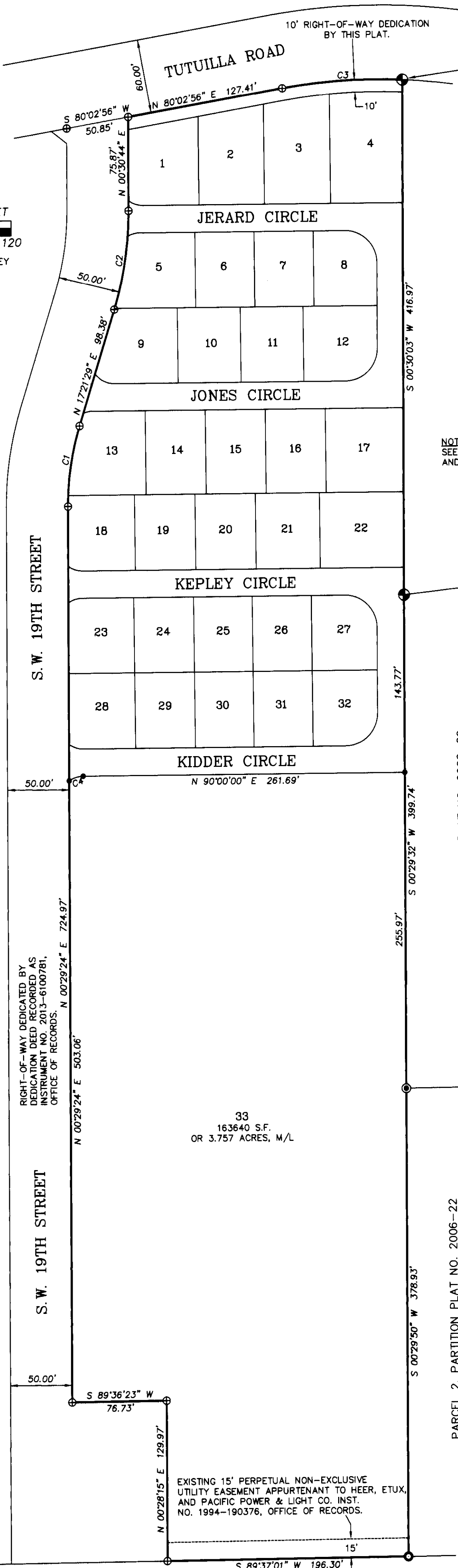
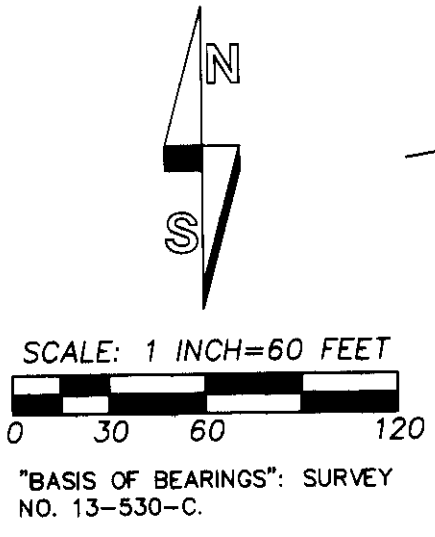
DATE: 10/13	DR. BY: WRW/DMT
CK. BY: WRW	NO: 12-1382

PROJECT: \PHOMESPLATS1  
PENDLETON HOMES,  
PHASE I

PENDLETON HOMES, PHASE I

AN ADDITION TO THE CITY OF PENDLETON, OREGON.  
A SUBDIVISION OF PARCEL 2 OF UMATILLA COUNTY  
PARTITION PLAT NO. 2011-09, SITUATED IN THE  
NW 1/4 OF SECTION 15, T2N., R32E., W.M.,  
UMATILLA COUNTY, OREGON.

SHEET 2 OF 4



INITIAL POINT  
BEARS S 80°07'02" W, 772.71'  
FROM N 1/4 CORNER OF  
SECTION 15 PER PARTITION  
PLAT NO. 2011-09.

NO	DELTA	RADIUS	LENGTH	CHORD	CHORD BRG
C1	16°51'25"	225.00'	66.20'	65.96'	S 08°54'30" W
C2	16°51'29"	275.00'	80.91'	80.62'	N 08°56'15" E
C3	12°34'43"	447.47'	98.24'	98.04'	S 86°31'21" W
C4	35°57'50"	19.50'	12.24'	12.04'	S 72°01'05" W

NOTE:  
SEE SHEET 3 OF 4 FOR NEW EASEMENTS  
AND ANNOTATION OF LOTS 1 THROUGH 32.

LEGEND

- ⊕ - FOUND 5/8" REBAR WITH YELLOW PLASTIC CAP MARKED "PLS 1106" FROM SURVEY NO. 89-071-C.
  - ⊕ - FOUND 5/8" REBAR WITH YELLOW PLASTIC CAP MARKED "PLS 2824 COP" FROM PARTITION PLAT NO. 2011-09.
  - ⊕ - FOUND 5/8" REBAR WITH ALUMINUM CAP MARKED "PLS 933" FROM PARTITION PLAT NO. 2002-29.
  - ⊕ - FOUND 5/8" REBAR WITH RED PLASTIC CAP MARKED "OR PLS 1106 WA PLS 17372" FROM PARTITION PLAT NO. 2006-22.
  - - 5/8" BY 30" REBAR WITH RED PLASTIC CAP MARKED "OR PLS 1106 WA PLS 17372" TO ESTABLISH UNDER "POST MONUMENTATION" STATUTES ORS CHAPTER 92.065 & 92.070. SEE SURVEYORS CERTIFICATE & NARRATIVE, SHEET 4 OF 4.
- S.F. - INDICATES SQUARE FEET. LOT AREAS ARE ROUNDED TO THE NEAREST 5 SQUARE FEET.

NOTE: PLAT BOUNDARY DIMENSIONS WHICH ARE COMMON WITH THOSE OF SURVEY NO. 13-530-C ARE IDENTICAL.

OTHER RECORD ENCUMBRANCES:

- AS DISCLOSED BY PRELIMINARY REPORT FOR TITLE INSURANCE, PREPARED BY PIONEER TITLE COMPANY, 132 S.E. COURT AVENUE, PENDLETON, OREGON, DATED OCTOBER 17, 2013, ORDER NO. 91970.
- EASEMENT FOR POLE ANCHOR GRANTED BY THE CITY OF PENDLETON TO PACIFIC TELEPHONE AND TELEGRAPH COMPANY IN BOOK 160, PAGE 452, DEED RECORDS OF UMATILLA COUNTY. SURVEYOR'S NOTE: THE ANCHOR REFERRED TO IN THE EASEMENT DOCUMENT IS LOCATED APPROXIMATELY 275 FEET EAST OF THE EAST LINE OF THIS PLAT.
  - "BLANKET" TYPE ENCUMBRANCE GRANTED BY THE CITY OF PENDLETON TO PACIFIC POWER & LIGHT COMPANY FOR ELECTRIC TRANSMISSION AND DISTRIBUTION LINES ACROSS THE NE1/4 OF THE NW1/4 OF SECTION 15, T2N., R32E., W.M. SURVEYOR'S NOTE: THIS EASEMENT IS AT OR NEAR THE LOCATION OF "AS STAKED" LOCATION IN MARCH, 1948 AND MAY AFFECT LANDS WITHIN THIS PLAT.

RECEIVED BY  
Umatilla County Surveyor  
Date: 06/25/2014  
Rec'd By: G Hensley  
No.: 14-098-B

I CERTIFY THIS IS AN EXACT COPY OF SHEET 2 OF 4 OF PENDLETON HOMES, PHASE I.

*William R. Wells*  
WILLIAM R. WELLS, PLS

REGISTERED  
PROFESSIONAL  
LAND SURVEYOR

*William R. Wells*  
OREGON  
JULY 22, 1977  
WILLIAM R. WELLS  
1106  
RENEWS 6/30/16

RECORDING INFORMATION  
UMATILLA COUNTY OFFICE OF RECORDS:

STATE OF OREGON, }  
COUNTY OF UMATILLA }  
I certify that this instrument was received and recorded  
ON June 24, 2014  
at 11:27 o'clock Am., in the record of  
PLATS of said County.  
BOOK PAGE Slide  
15 92  
OFFICE OF COUNTY RECORDS  
By: ...Steve Churchill...Records Officer  
Fees \$ 88.00 No. 2014-6180215

WELLS SURVEYING  
1 SW NYE AVENUE, SUITE B  
P.O. BOX 1696  
PENDLETON, OR 97801  
PHONE: (541) 276-6362

PROJECT: \PHOMESPLATS2  
PENDLETON HOMES,  
PHASE I

DATE: 10/13 DR. BY: WRW/DMT  
CK. BY: WRW NO: 12-1382

SOUTH LINE OF NE1/4  
NW1/4, SEC. 15

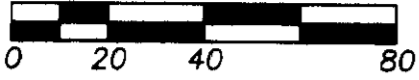
PENDLETON HOMES, PHASE I

AN ADDITION TO THE CITY OF PENDLETON, OREGON. A SUBDIVISION OF PARCEL 2 OF UMATILLA COUNTY PARTITION PLAT NO. 2011-09, SITUATED IN THE NW 1/4 OF SECTION 15, T2N., R32E., W.M., UMATILLA COUNTY, OREGON.

SHEET 3 OF 4



SCALE: 1 INCH=40 FEET

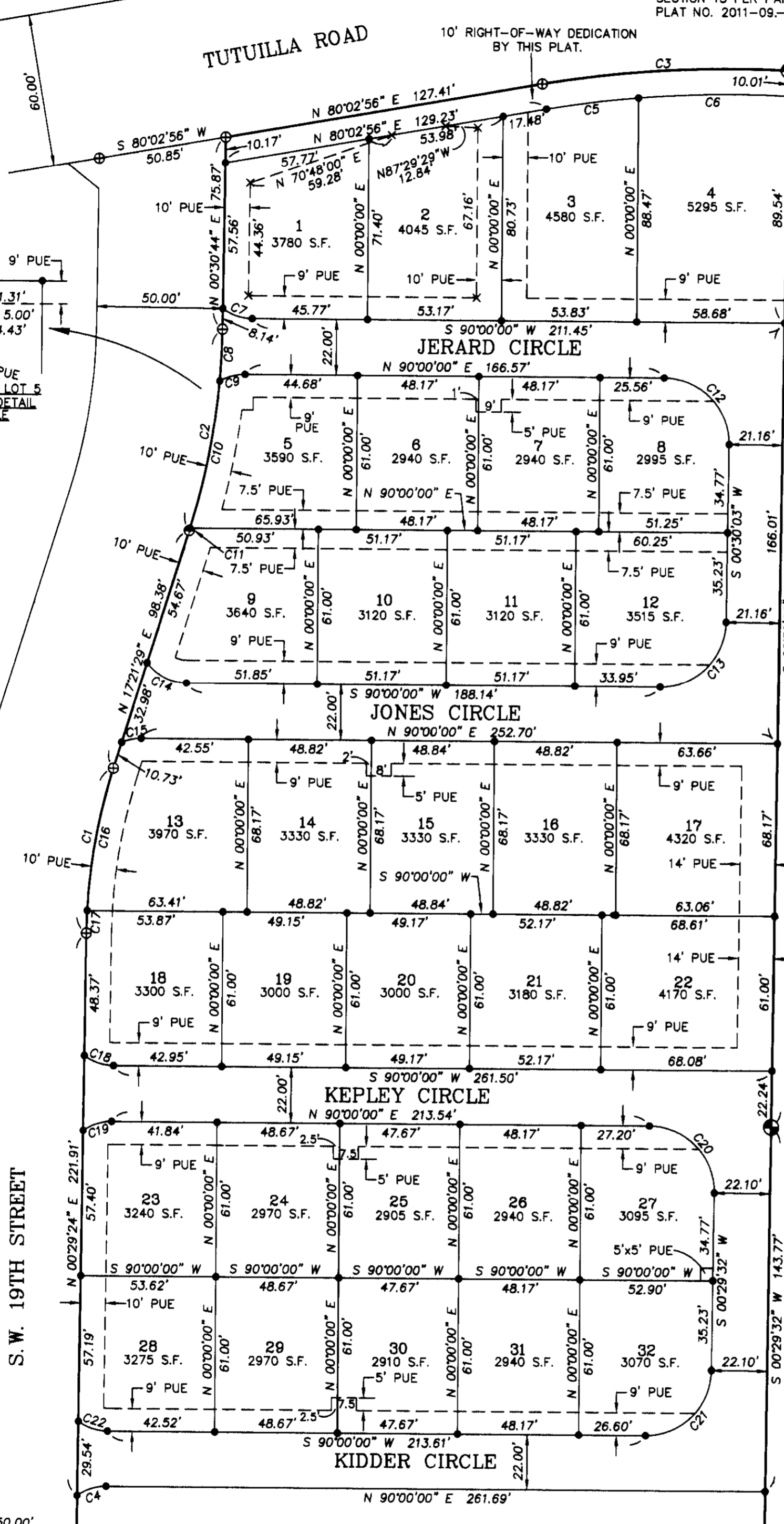


"BASIS OF BEARINGS": SURVEY NO. 13-530-C.

INITIAL POINT BEARS S 80°07'02" W, 772.71' FROM N 1/4 CORNER OF SECTION 15 PER PARTITION PLAT NO. 2011-09.

10' RIGHT-OF-WAY DEDICATION BY THIS PLAT.

TUTUILLA ROAD



LEGEND

- FOUND 5/8" REBAR WITH YELLOW PLASTIC CAP MARKED "PLS 1106" FROM SURVEY NO. 89-071-C.
FOUND 5/8" REBAR WITH YELLOW PLASTIC CAP MARKED "PLS 2824 COP" FROM PARTITION PLAT NO. 2011-09.
FOUND 5/8" REBAR WITH ALUMINUM CAP MARKED "PLS 933" FROM PARTITION PLAT NO. 2002-29.
FOUND 5/8" REBAR WITH RED PLASTIC CAP MARKED "OR PLS 1106 WA PLS 17372" FROM PARTITION PLAT NO. 2006-22.
5/8" BY 30" REBAR WITH RED PLASTIC CAP MARKED "OR PLS 1106 WA PLS 17372" TO ESTABLISH UNDER "POST MONUMENTATION" STATUTES ORS CHAPTER 92.065 & 92.070. SEE SURVEYORS CERTIFICATE & NARRATIVE, SHEET 4 OF 4.
S.F. - INDICATES SQUARE FEET. LOT AREAS ARE ROUNDED TO THE NEAREST 5 SQUARE FEET.
PUE - INDICATES PUBLIC UTILITY EASEMENT.
--- INDICATES PUE EASEMENT LINE.

NOTE: PLAT BOUNDARY DIMENSIONS WHICH ARE COMMON WITH THOSE OF SURVEY NO. 13-530-C ARE IDENTICAL.

CURVE TABLE

Table with columns: NO, DELTA, RADIUS, LENGTH, CHORD, CHORD BRG. Lists curve data for C1 through C22.

OTHER NOTES:

- 1. JERARD CIRCLE, JONES CIRCLE, KEPLLEY CIRCLE AND KIDDER CIRCLE ARE COMMON AREAS WITH UNDERLYING EASEMENTS FOR PUBLIC UTILITIES, INGRESS-EGRESS TO LOTS AND FIRE AND EMERGENCY VEHICLE ACCESS. SEE OWNERS DECLARATION, SHEET 4 OF 4.
2. IT IS THE INTENT THAT PUBLIC UTILITY EASEMENTS DEDICATED ON THIS PLAT ALSO INCLUDE THE USE FOR PEDESTRIAN INGRESS AND EGRESS.

RECEIVED BY

Umatilla County Surveyor
Date: 06/25/2014
Rec'd By: G. Nensley
No.: 14-098-B

RECORDING INFORMATION
UMATILLA COUNTY OFFICE OF RECORDS:

STATE OF OREGON, COUNTY OF UMATILLA
I certify that this instrument was received and recorded

ON June 24, 2014
at 11:27 o'clock Am., in the record of PLATS of said County.
BOOK PAGE Slide
15 92

OFFICE OF COUNTY RECORDS

By: ...Steve Churchill...Records Officer

Fees \$ 88.00 No. 2014-6180215

I CERTIFY THIS IS AN EXACT COPY OF SHEET 3 OF 4 OF PENDLETON HOMES, PHASE I.

Will R. Wells
WILLIAM R. WELLS, PLS

REGISTERED PROFESSIONAL LAND SURVEYOR

Will R. Wells

OREGON
JULY 22, 1977
WILLIAM R. WELLS
1106

RENEWS 6/30/16

WELLS SURVEYING
1 SW NYE AVENUE, SUITE B
P.O. BOX 1696
PENDLETON, OR 97801
PHONE: (541) 276-6362

DATE: 10/13 DR. BY: WRW/DMT
CK. BY: WRW NO: 12-1382

PROJECT: PHOMESPLATS3
PENDLETON HOMES, PHASE I

PARCEL 1, PARTITION PLAT NO. 2011-09

PARCEL 2, PARTITION PLAT NO. 2002-29

PENDLETON HOMES, PHASE I  
AN ADDITION TO THE CITY OF PENDLETON, OREGON.  
A SUBDIVISION OF PARCEL 2 OF UMATILLA COUNTY  
PARTITION PLAT NO. 2011-09, SITUATED IN THE  
NW 1/4 OF SECTION 15, T2N., R32E., W.M.,  
UMATILLA COUNTY, OREGON.  
SHEET 4 OF 4

**OWNERS DECLARATION & DEDICATION**

PENDLETON AFFORDABLE HOUSING, LLC, AN OREGON LIMITED LIABILITY COMPANY, AS CONTRACT PURCHASER, DOES HEREBY ESTABLISH AND ACKNOWLEDGE THIS PLAT AS THE OFFICIAL MAP AND PLAT OF PENDLETON HOMES, PHASE I, AN ADDITION TO THE CITY OF PENDLETON, OREGON AND DOES HEREBY DEDICATE THE STREET RIGHT-OF-WAY AND PUBLIC UTILITY EASEMENTS SHOWN OR NOTED WITHIN THE PLAT BOUNDARY FOR PUBLIC USE.

PENDLETON AFFORDABLE HOUSING, LLC, FURTHER DECLARES THAT THE STREETS NAMED JERARD CIRCLE, JONES CIRCLE, KEPLEY CIRCLE AND KIDDER CIRCLE ARE PRIVATE STREETS TO BE OPERATED AND MAINTAINED AS COMMON AREAS BY THE HOMEOWNERS ASSOCIATION OF PENDLETON HOMES, PHASE I AND THAT THERE IS A PERPETUAL, NON-EXCLUSIVE, PUBLIC UTILITY EASEMENT, INGRESS-EGRESS EASEMENT AND FIRE AND EMERGENCY VEHICLE ACCESS EASEMENT RESERVED OVER, UNDER AND ACROSS ALL AREAS WITHIN NAMED PRIVATE STREET LIMITS.

PENDLETON AFFORDABLE HOUSING, LLC

BY: [Signature]  
SAJ T. JIVANJEE, MANAGING MEMBER

ACKNOWLEDGMENT  
STATE OF OREGON )  
COUNTY OF Yamhill )SS

THIS INSTRUMENT WAS ACKNOWLEDGED BEFORE ME THIS 12<sup>th</sup> DAY OF June, 2014, BY SAJ T. JIVANJEE.

[Signature]  
NOTARY PUBLIC FOR THE STATE OF OREGON  
MY COMMISSION EXPIRES: May 25 2015  
COMMISSION NUMBER: 458748

THE CITY OF PENDLETON, AN OREGON MUNICIPAL CORPORATION, AS FEE OWNER AND CONTRACT SELLER, DOES HEREBY ESTABLISH AND ACKNOWLEDGE THIS PLAT AS THE OFFICIAL MAP AND PLAT OF PENDLETON HOMES, PHASE I, AN ADDITION TO THE CITY OF PENDLETON, OREGON.

THE CITY OF PENDLETON DOES HEREBY DEDICATE THE STREET RIGHT-OF-WAY AND PUBLIC UTILITY EASEMENTS SHOWN OR NOTED WITHIN THE PLAT BOUNDARY FOR PUBLIC USE.

THE CITY OF PENDLETON FURTHER DECLARES THAT THE STREETS NAMED JERARD CIRCLE, JONES CIRCLE, KEPLEY CIRCLE AND KIDDER CIRCLE ARE PRIVATE STREETS TO BE OPERATED AND MAINTAINED AS COMMON AREAS BY THE HOMEOWNERS ASSOCIATION OF PENDLETON HOMES, PHASE I. THE CITY OF PENDLETON HEREBY RESERVES A PERPETUAL, NON-EXCLUSIVE, PUBLIC UTILITY EASEMENT, INGRESS-EGRESS EASEMENT AND FIRE AND EMERGENCY VEHICLE ACCESS EASEMENT OVER, UNDER AND ACROSS ALL AREAS WITHIN NAMED PRIVATE STREET LIMITS.

CITY OF PENDLETON  
[Signature] [Signature]  
MAYOR CITY RECORDER

ACKNOWLEDGMENT  
STATE OF OREGON )  
COUNTY OF UMATILLA )SS

ON THIS 24 DAY OF June, 2014, PERSONALLY APPEARED THE ABOVE NAMED MAYOR AND CITY RECORDER OF THE CITY OF PENDLETON, AND EACH BEING DULY SWORN, DID SAY THAT THEY ARE THE MAYOR AND CITY RECORDER OF THE CITY OF PENDLETON, A MUNICIPAL CORPORATION IN THE STATE OF OREGON, AND THIS INSTRUMENT WAS SIGNED ON BEHALF OF SAID CORPORATION BY AUTHORITY OF ITS COUNCIL.

[Signature]  
NOTARY PUBLIC FOR THE STATE OF OREGON  
MY COMMISSION EXPIRES: 2-7-2017  
COMMISSION NUMBER: 475393A

I CERTIFY THIS IS AN EXACT COPY OF SHEET 4 OF 4 OF PENDLETON HOMES, PHASE I.

[Signature]  
WILLIAM R. WELLS, PLS

**APPROVALS**

**CITY OF PENDLETON**

PENDLETON CITY PLANNING COMMISSION  
THE ACCOMPANYING PLAT IS HEREBY APPROVED THIS

23 DAY OF June, 2014.

[Signature] [Signature]  
CHAIRPERSON CITY PLANNER

PENDLETON CITY SURVEYOR  
THE ACCOMPANYING PLAT IS HEREBY APPROVED THIS

16 DAY OF June, 2014.

[Signature]  
PENDLETON CITY SURVEYOR

**UMATILLA COUNTY**

**UMATILLA COUNTY SURVEYOR**

I CERTIFY I HAVE EXAMINED THE ACCOMPANYING PLAT, THAT IT COMPLIES WITH THE LAWS OF THE STATE OF OREGON WITH REFERENCE TO THE FILING AND RECORDING OF SUCH PLATS, AND I THEREFORE APPROVE SAID PLAT FOR SIGNATURE BY THE COUNTY COMMISSIONERS OF UMATILLA COUNTY, OREGON.

DATED THIS 24 DAY OF June, 2014.

[Signature]  
UMATILLA COUNTY SURVEYOR

**UMATILLA COUNTY COMMISSIONERS**

THE ACCOMPANYING PLAT IS APPROVED FOR FILING AND RECORDING IN THE RECORD OF PLATS OF UMATILLA COUNTY BY THE UNDERSIGNED, BY ITS ORDER.

DATED THIS 24 DAY OF June, 2014.

[Signature]  
CHAIRMAN  
[Signature]  
COMMISSIONER  
[Signature]  
COMMISSIONER

**ASSESSOR AND TAX COLLECTOR**

WE, THE ASSESSOR AND THE TAX COLLECTOR OF UMATILLA COUNTY, OREGON, DO HEREBY CERTIFY THAT WE HAVE EXAMINED THE TAX RECORDS RELATIVE TO THE LAND COVERED BY THE ACCOMPANYING PLAT AND THAT ALL AD VALOREM AND SPECIAL ASSESSMENTS DUE PURSUANT TO LAW HAVE BEEN ASSESSED AND COLLECTED.

DATED THIS 24 DAY OF June, 2014.

[Signature]  
COUNTY ASSESSOR  
[Signature]  
COUNTY TAX COLLECTOR

**SURVEYORS CERTIFICATE & NARRATIVE**

I, WILLIAM R. WELLS, A PROFESSIONAL LAND SURVEYOR IN THE STATE OF OREGON, DO HEREBY CERTIFY THAT I HAVE CORRECTLY SURVEYED AND MARKED WITH LEGAL MONUMENTS, IN ACCORDANCE WITH O.R.S. CHAPTER 92, AS REVISED, AND THE CITY OF PENDLETON DEVELOPMENT ORDINANCE, THE LANDS SHOWN IN THE ACCOMPANYING PLAT OF "PENDLETON HOMES, PHASE I".

THE SURVEY WAS MADE FROM CONTROLLING MONUMENTS RECOVERED ON THE BOUNDARY OF PARCEL 2 OF UMATILLA COUNTY PARTITION PLAT NO. 2011-09. THE RECORD SURVEY SHOWING RECORD VERSES MEASURED COURSES ON THE BOUNDARY OF PARCEL 2 IS RECORDED AS UMATILLA COUNTY SURVEY NO. 13-530-C.

THE SURVEY WAS MADE BY A 2 PERSON CREW USING TRIMBLE GEODETIC GPS RECEIVERS OPERATED IN REAL TIME KINEMATIC MODE. MONUMENTS FOUND AND TIED WERE VERIFIED BY REDUNDANT GPS MEASUREMENTS.

PER ORS CHAPTER 92.065 AND 92.070, I CERTIFY THAT INTERIOR MONUMENTS IN THIS SUBDIVISION WILL BE SET, IN ACCORDANCE WITH ORS CHAPTER 92.060, WITHIN 60 DAYS OF INTERIOR STREET PAVING AND SIDEWALK CONSTRUCTION OR BY OCTOBER 1, 2014, WHICHEVER OCCURS FIRST.

**REAL PROPERTY DESCRIPTION**

PARCEL 2 OF UMATILLA COUNTY PARTITION PLAT NO. 2011-09, RECORDED APRIL 18, 2011 IN THE RECORD OF PLATS OF UMATILLA COUNTY AS INSTRUMENT NO. 2011-5770527, UMATILLA COUNTY OFFICE OF RECORDS.

SUBJECT TO, A 15 FOOT WIDE PERPETUAL NON-EXCLUSIVE EASEMENT GRANTED BY THE CITY OF PENDLETON TO HEER AND PACIFIC POWER AND LIGHT COMPANY, PER INSTRUMENT NO. 1994-190376, UMATILLA COUNTY OFFICE OF RECORDS, AND OTHER EASEMENTS AND ENCUMBRANCES OF RECORD.

REGISTERED  
PROFESSIONAL  
LAND SURVEYOR

[Signature]  
WILLIAM R. WELLS, PLS

[Signature]

OREGON  
JULY 22, 1977  
WILLIAM R. WELLS  
1106  
RENEWS 6/30/16

**RECORDING INFORMATION**  
UMATILLA COUNTY OFFICE OF RECORDS:

STATE OF OREGON,  
COUNTY OF UMATILLA )  
I certify that this instrument was received and recorded

ON June 24, 2014  
at 11:27 o'clock Am., in the record of  
PLATS of said County.  
BOOK 15 PAGE 92 Slide

**OFFICE OF COUNTY RECORDS**

By: ...Steve Churchill...Records Officer  
Fees \$ 88.00 No. 2014-6180215

WELLS SURVEYING  
1 SW NYE AVENUE, SUITE B  
P.O. BOX 1696  
PENDLETON, OR 97801  
PHONE: (541) 276-6362

**PROJECT:** \PHOMESPLAT4

PENDLETON HOMES,  
PHASE I

DATE: 10/13 DR. BY: WRW/DMT  
CK. BY: WRW NO: 12-1382

3/4  
AFTER RECORDING RETURN TO:  
Umatilla County Survey Department  
3920 Westgate  
Pendleton, OR 97801

  
2015-6250252 1 of 3

State of Oregon  
County of Umatilla



Instrument received  
and recorded on  
1/14/2015 11:52:55 AM

in the record of instrument  
code type DE-AFF

Instrument number 2015-6250252  
Fee \$64.00

Umatilla County  
Received:1/14/2015



Office of County Records

*Steve Churchill*

Records Officer  
1024301 P3

## AFFIDAVIT INTERIOR MONUMENTATION

I, William R. Wells, am the surveyor for the Plat of Pendleton Homes, Phase I. The Plat was recorded June 24, 2014 at Book 15, Page 92, in the Record of Plats of Umatilla County, Oregon as Instrument No. 2014-6180215, Umatilla County Office of Records.

This is to certify that this subdivision plat has been correctly surveyed and monumented with proper monuments as depicted on the recorded subdivision plat except as explained in this Affidavit. Monuments were fully established as of January 2, 2015.

Due to the nature of the subdivision, ("Zero" lot lines, narrow streets and rock walls on or near property lines), different monuments than those depicted on the plat were established in certain areas, with the consent of the Umatilla County Surveyor. Descriptions of areas where different monuments were established are:

1. A rock wall is constructed on the property line common to Lots 5 through 8 and 9 through 12. The Southerly corners between Lots 5 and 6, Lots 6 and 7, and Lots 7 and 8 were referenced by 5/8 inch by 24 inch rebars with 1 1/4" red plastic caps stamped "ORPLS 1106 WAPLS17372", established North 00°00'00" East 4.00 feet from corner points. The Northerly corners between Lots 9 and 10, Lots 10 and 11 and Lots 11 and 12 were referenced by 5/8 inch by 24 inch rebars with red plastic caps stamped "ORPLS 1106 WAPLS 17372" established North 00°00'00" East, 4.00 feet from their corner points.
2. Corner positions for monuments on each end of Curve 7 on Lot 1 and Curve 9 on Lot 5 fall in the concrete sidewalk and are monumented with a lead plug in drilled hole with a 3/4 inch brass washer stamped "PLS 1106" screwed into the lead plug.
3. Corner positions for monuments on each end of Curve 14 on Lot 9 and Curve 15 on Lot 13 fall in the concrete sidewalk and are monumented with a lead plug in drilled hole with a 3/4 inch brass washer stamped "PLS 1106" screwed into the lead plug.

4. Corner positions for monuments on each end of Curve 18 on Lot 18 and on the West end of Curve 19 on Lot 23 fall in the concrete sidewalk and are monumented with a lead plug in drilled hole with a  $\frac{3}{4}$  inch brass washer stamped "PLS 1106" screwed into the lead plug.

5. Corner positions for monuments on West end of Curve 22 on Lot 28 and on the West end of Curve 4 on Lot 33 fall in the concrete sidewalk and are monumented with a lead plug in drilled hole with a  $\frac{3}{4}$  inch brass washer stamped "PLS 1106" screwed into the lead plug.

6. Corner positions at the Southwest corners of Lots 2, 3 and 4 and the Northwest corners of Lots 6, 7 and 8 fall in the concrete sidewalk. Reference monuments to the Southwest corners of Lots 6, 7 and 8 were set in the centerline of Jerard Circle, South  $00^{\circ}00'00''$  West, 11.00 feet from the corner points. Corner positions at the Northwest corners of Lots 6, 7 and 8 were set in the centerline of Jerard Circle, North  $00^{\circ}00'00''$  East, 11.00 feet from the corner points. Reference monuments are 1  $\frac{1}{2}$  inch stainless steel disks set in the asphalt with 2 inch "magspikes".

7. Corner positions at the Southwest corners of Lots 10, 11 and 12 and the Northwest corners of Lots 14, 15, 16 and 17 fall in the concrete sidewalk. Reference monuments to the Southwest corners of Lots 10, 11 and 12 were set in the centerline of Jones Circle, South  $00^{\circ}00'00''$  West, 11.00 feet from the corner points. Reference monuments to the Northwest corners of Lots 14, 15, 16 and 17 were set in the centerline of Jones Circle, North  $00^{\circ}00'00''$  East, 11.00 feet from the corner points. Reference monuments are 1  $\frac{1}{2}$  inch stainless steel disks set in the asphalt with 2 inch "magspikes".

8. Corner positions at the Southwest corners of Lots 19, 20, 21 and 22 fall in the concrete sidewalk. Corner positions at the Northwest corners of Lots 24, 25, 26 and 27 fall South of the existing curb where a sidewalk will be constructed in the future. Reference monuments to the Southwest corners of Lots 19, 20, 21 and 22 were set in the centerline of Kepley Circle, South  $00^{\circ}00'00''$  West, 11.00 feet from the corner points. Reference monuments to the Northwest corners of Lots 24, 25, 26 and 27 were set in the centerline of Kepley Circle, North  $00^{\circ}00'00''$  East, 11.00 feet from the corner points. Reference monuments are 1  $\frac{1}{2}$  inch stainless steel disks set in the asphalt with 2 inch "magspikes".

9. The Southeast corner of Lot 4 falls near the East edge of a concrete block retaining wall. I set a reference monument to said Southeast corner in the top of the concrete block retaining wall, South  $90^{\circ}00'00''$  West, 2.40 feet from the corner point. The reference monument is a drilled hole with lead plug with a  $\frac{3}{4}$  inch brass washer stamped "PLS 1106" screwed into the lead plug.

10. The  $\frac{5}{8}$  inch rebar monuments from Partition Plat No. 2011-09, at the West end of Curve 3 and North end of Curve 8 were destroyed by construction and were not re-established. The  $\frac{5}{8}$  inch rebar from Partition Plat No. 2011-09, which bears North  $00^{\circ}30'44''$  East, 10.17 feet from the Northwest corner of Lot 1, was destroyed by construction and was not re-established.



2015-6250252 2 of 3



2015-6250252 3 of 3

William R. Wells

William R. Wells, PLS, License No. 1106

[Surveyor's Seal]

This instrument was acknowledged before me on this 7<sup>th</sup> day of January, 2015.

by William R. Wells

Dawn M Tubbs

Notary Public for the State of Oregon

My Commission expires: 10-14-16

Approved by: David H. Krumbein  
David H. Krumbein, County Surveyor

REGISTERED  
PROFESSIONAL  
LAND SURVEYOR

William R. Wells

OREGON  
JULY 22, 1977  
WILLIAM R. WELLS  
1106

renews 6-30-16

14 January 2015  
Date

OFFICIAL SEAL  
DAWN M TUBBS  
NOTARY PUBLIC-OREGON  
COMMISSION NO. 471536  
MY COMMISSION EXPIRES OCTOBER 14, 2016