

CARVER REPLAT

A REPLAT OF LOTS 6 & 7 OF BLOCK 152, RESERVE (RESERVATION) ADDITION TO THE TOWN, NOW CITY OF PENDLETON, SITUATED IN THE SE1/4 OF SECTION 2, TOWNSHIP 2 NORTH, RANGE 32 EAST, W.M., UMATILLA COUNTY, OREGON. MAY, 2021.

APPROVALS

CITY OF PENDLETON

CITY OF PENDLETON PLANNING COMMISSION
THE ACCOMPANYING REPLAT IS HEREBY APPROVED THIS DAY

23rd DAY OF November 2021.
Ryan D. Hoff PRESIDENT
Hege Bess CITY PLANNER

CITY SURVEYOR
THE ACCOMPANYING REPLAT IS HEREBY APPROVED THIS DAY

1st DAY OF December 2021.
David H. Kelly
CITY OF PENDLETON SURVEYOR

UMATILLA COUNTY

UMATILLA COUNTY SURVEYOR
I CERTIFY I HAVE EXAMINED THE ACCOMPANYING REPLAT, THAT IT COMPLIES WITH THE LAWS OF THE STATE OF OREGON, WITH REFERENCE TO THE FILING AND RECORDING OF SUCH PLATS, AND THEREFORE APPROVE SAID PLAT FOR SIGNATURE BY THE COUNTY COMMISSIONERS OF UMATILLA COUNTY, OREGON.

DATED THIS 2 DAY OF December 2021.
David H. Kelly
UMATILLA COUNTY SURVEYOR

UMATILLA COUNTY COMMISSIONERS

THE ACCOMPANYING REPLAT IS APPROVED FOR FILING AND RECORDING IN THE RECORD OF PLATS OF UMATILLA COUNTY BY THE UNDERSIGNED, BY IT'S ORDER.

DATED THIS 2 DAY OF December 2021.
Greg M. Deak CHAIRPERSON
John Baker COMMISSIONER
Christina COMMISSIONER

ASSESSOR & TAX COLLECTOR

WE, THE ASSESSOR AND THE TAX COLLECTOR OF UMATILLA COUNTY, OREGON, DO HEREBY CERTIFY THAT WE HAVE EXAMINED THE TAX RECORDS RELATIVE TO THE LAND COVERED BY THE ACCOMPANYING REPLAT AND THAT ALL AD VALOREM AND SPECIAL ASSESSMENTS DUE PURSUANT TO LAW HAVE BEEN ASSESSED AND COLLECTED.

DATED THIS 2 DAY OF December 2021.
Rachael Reynolds COUNTY ASSESSOR
Rachael Reynolds COUNTY TAX COLLECTOR

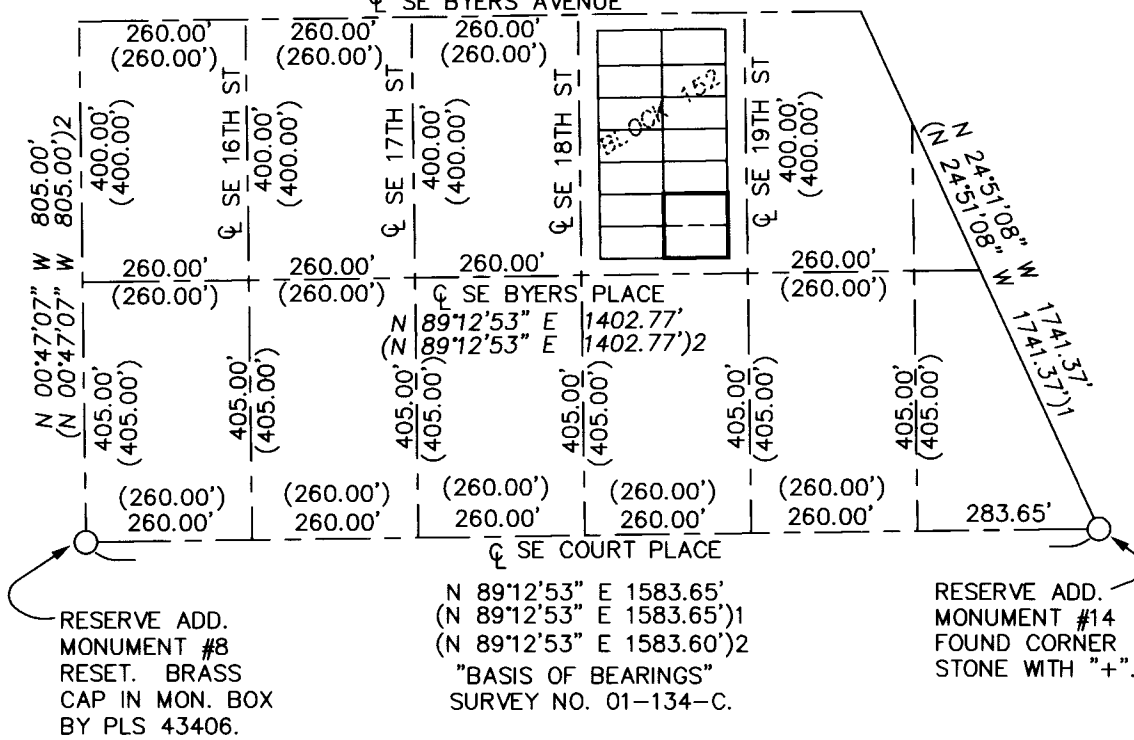
RECORDING INFORMATION,
UMATILLA COUNTY OFFICE OF RECORDS:

STATE OF OREGON, }
COUNTY OF UMATILLA }
I certify that this instrument was received and recorded on 12-03-2021 at 2:18 o'clock P. m., in the record of PLATS of said County. BOOK 17 PAGE 36
OFFICE OF COUNTY RECORDS
By: STEVE CHURCHILL Records Officer
Fee \$ 120.00 No. 2021-7330018

VICINITY MAP

NOT TO SCALE

N 89°12'53" E 1224.12'
(N 89°12'53" E 1224.12')²
SE BYERS AVENUE



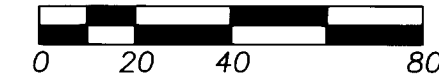
RESERVE ADD. MONUMENT #8 RESET. BRASS CAP IN MON. BOX BY PLS 43406.

N 89°12'53" E 1583.65'
(N 89°12'53" E 1583.65')¹
(N 89°12'53" E 1583.60')²
"BASIS OF BEARINGS" SURVEY NO. 01-134-C.

RESERVE ADD. MONUMENT #14 FOUND CORNER STONE WITH "+".



SCALE: 1"=40 FEET



"BASIS OF BEARINGS IS SURVEY NO. 01-134-C AS SHOWN. ALL COMMON LOT & BLOCK DIMENSIONS ARE IDENTICAL.

SURVEYORS CERTIFICATE

I, JASON M. WELLS, A PROFESSIONAL LAND SURVEYOR IN THE STATE OF OREGON, DO HEREBY CERTIFY THAT I HAVE CORRECTLY SURVEYED AND MARKED WITH LEGAL MONUMENTS, IN ACCORDANCE WITH O.R.S. CHAPTER 92, AS REVISED, AND THE CITY OF PENDLETON AND UMATILLA COUNTY DEVELOPMENT ORDINANCES, THE LANDS SHOWN IN THE ACCOMPANYING PLAT OF "CARVER REPLAT".

THE SURVEY WAS MADE WITH REFERENCE TO CONTROLLING MONUMENTS SHOWN IN THE VICINITY MAP DETAIL.

REAL PROPERTY DESCRIPTION:

DESCRIPTION FROM WARRANTY DEED RECORDED AS INSTRUMENT NO. 2016-6400648, UMATILLA COUNTY DEED RECORDS.

LOTS 6 AND 7, BLOCK 152, RESERVATION ADDITION (PLATTED AS RESERVE ADDITION) TO THE TOWN, NOW CITY OF PENDLETON, UMATILLA COUNTY, OREGON.

REGISTERED PROFESSIONAL LAND SURVEYOR

Jason M. Wells
JASON M. WELLS, PLS

OREGON
NOVEMBER 29, 2010
JASON M. WELLS
54657PLS
RENEWS 6/30/22

OWNERS DECLARATION

I, JANICE L. CARVER, OWNER OF THE LANDS CONTAINED WITHIN THIS REPLAT, DO HEREBY ESTABLISH AND ACKNOWLEDGE THIS REPLAT AS THE OFFICIAL MAP AND PLAT OF "CARVER REPLAT", A REPLAT OF LOTS 6 AND 7, BLOCK 152, RESERVATION ADDITION, (PLATTED AS RESERVE ADDITION), TO THE TOWN, NOW CITY OF PENDLETON, AND THAT SAID PLAT WAS PREPARED IN ACCORDANCE WITH ORS CHAPTER 92, AS REVISED, AND THE CITY OF PENDLETON AND UMATILLA COUNTY DEVELOPMENT ORDINANCES.

I FURTHER ACKNOWLEDGE ALL EASEMENTS AND ENCUMBRANCES AFFECTING THIS PROPERTY WHETHER SHOWN ON THIS PLAT OR CONTAINED WITHIN DEED RECORDS OF UMATILLA COUNTY.

Janice L. Carver
JANICE L. CARVER, OWNER

NARRATIVE

THIS SUBDIVISION REPLAT WAS MADE AT THE REQUEST OF JANICE CARVER, OWNER, TO REMOVE THE ORIGINAL LOT LINE BETWEEN LOTS 6 & 7 AND PLAT A NEW LINE BASED ON AN APPROVED VARIANCE OBTAINED FROM THE CITY OF PENDLETON. THE NEW LOT CONFIGURATIONS ARE SHOWN HEREIN. THE BLOCK WAS PREVIOUSLY CALCULATED IN SURVEYS 01-134-C, AND 13-217-B AS SHOWN IN THE VICINITY MAP DETAIL.

THE SURVEY WAS MADE WITH A ONE PERSON CREW USING A LEICA TOTAL STATION AND A LEICA GS14 GPS RECEIVER CONNECTED TO THE OREGON REALTIME GNSS NETWORK. CONTROL MONUMENT TIES AND CORNER SETS WERE VERIFIED BY REDUNDANT OBSERVATIONS.

ACKNOWLEDGMENT

STATE OF OREGON) SS
COUNTY OF UMATILLA)

THIS INSTRUMENT WAS ACKNOWLEDGED BEFORE ME THIS 22

DAY OF November 2021
BY JANICE L. CARVER, OWNER

Tricia K. Bateman NOTARY PUBLIC
Tricia K. Bateman NOTARY PRINTED NAME

MY COMMISSION EXPIRES: June 15, 2025

MY COMMISSION NUMBER: 1013652

LEGEND

- ◆ - SET 5/8" BY 24" REBAR WITH 1 1/4" BLUE PLASTIC CAP MARKED "WELLS SURVEYING PLS 54657 FOR WITNESS CORNER S 00°47'07" E-1.0' FROM TRUE CORNER POINT TO AVOID FENCE AND WOOD PILE. DIMENSIONS SHOWN ARE TO TRUE CORNER POINT.
- - SET 5/8" BY 24" REBAR WITH 1 1/4" BLUE PLASTIC CAP MARKED "WELLS SURVEYING PLS 54657."
- - MONUMENT FOUND AS NOTED.
- ⊕ - CALCULATED POINT ONLY. NOTHING FOUND OR SET ON THIS SURVEY.
- (XOX) - RECORD DIMENSION PER PLAT OF RESERVE, (RESERVATION) ADDITION.
- (XOX)1 - RECORD DIMENSION PER SURVEY NO. 01-134-C.
- (XOX)2 - RECORD DIMENSION PER SURVEY NO. 13-217-B.
- ① - LOT NUMBER, BLOCK 152 RESERVE, (RESERVATION) ADDITION.
- - INDICATES ORIGINAL LOT LINE FROM RESERVE (RESERVATION) ADDITION TO BE EXTINGUISHED BY THIS REPLAT.
- x--- - INDICATES EXISTING FENCE LINE.

NOTES:

1. RESERVATION ADDITION WAS ORIGINALLY PLATTED AS RESERVE ADDITION.
2. LOTS IN BLOCK 152, RESERVATION ADDITION WERE PLATTED 50.00' BY 100.00' WITH SIDE LINES AT RIGHT ANGLES TO BLOCK LINES.

I CERTIFY THIS IS A TRUE AND EXACT COPY OF "CARVER REPLAT."

Jason M. Wells
JASON M. WELLS, PLS

RECEIVED BY

Umatilla County Surveyor
Date: 12/7/21
Rec'd By: CT
No.: 21-134-8

WELLS SURVEYING
200 SE HAILEY SUITE 108
P.O. BOX 1696
PENDLETON, OR 97801
PHONE: (541) 276-6362

DATE: 05/21 DR. BY: JMW
CK. BY: JMW NO: 21-1787

PROJECT: \CARVERROT2021
REPLAT SURVEY FOR:

JANICE CARVER
LOTS 6 AND 7, BLOCK 152,
RESERVE (RESERVATION), ADDITION
TO THE TOWN, NOW CITY
CITY OF PENDLETON.
LOCATED IN THE SE1/4 OF SECTION 2,
T2N., R32E., W.M.,
UMATILLA COUNTY, OREGON.

