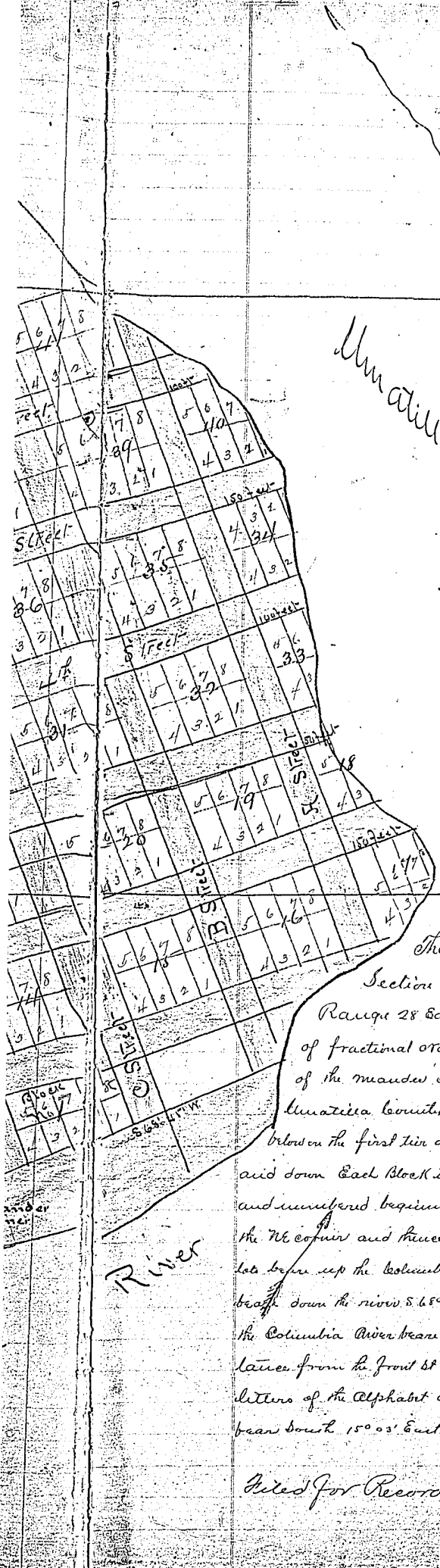


Umatilla River

See No 13.



Description of the Town of Umatilla
 The Town of Umatilla is located in the SW q. of the N. 1/4 of Section 17 and in the East half of the NE q. of Section 18, in Town 5 North Range 28 East of Willamette Meridian and more particularly located by the NE corner of fractional 0703, Block 0702 which lot corner is forty three links South and five the West of the meander corner on the Columbia River between Section 17 & 18 of the above named Township & Range in Umatilla County, Oregon. The Blocks are 100 feet square and numbered up the Columbia River commencing below on the first tier of Blocks then down the river in the next tier of blocks back and so on alternately up and down. Each Block is subdivided into eight lots 50 by 100 feet each located beginning from the said river and numbered beginning at the NE corner of each Block and numbering up the said river 1, 2, 3, 4, to the NE corner and then back 5, 6, 7, 8 to the SW corner, from the NE corner of Block 0703. The front range of lots begin up the Columbia River North 74° 57' E. from said corner of Block No 3. The front range of blocks begin down the river S. 65° 45' W. to the West side of O Street below Block No 1. All of the streets running up and down the Columbia River bear North 74° 57' E. and are designated by numbers 1, 2, 3 etc according to the distance from the front lot or lower the street leading to and from the Columbia are designated by the letters of the Alphabet as thus, beside from the Umatilla River, D Street being between Blocks No 1 & 2 and bear South 15° 03' East.

Filed for Record June 1st 1863

Timothy H. Davenport
Surveyor