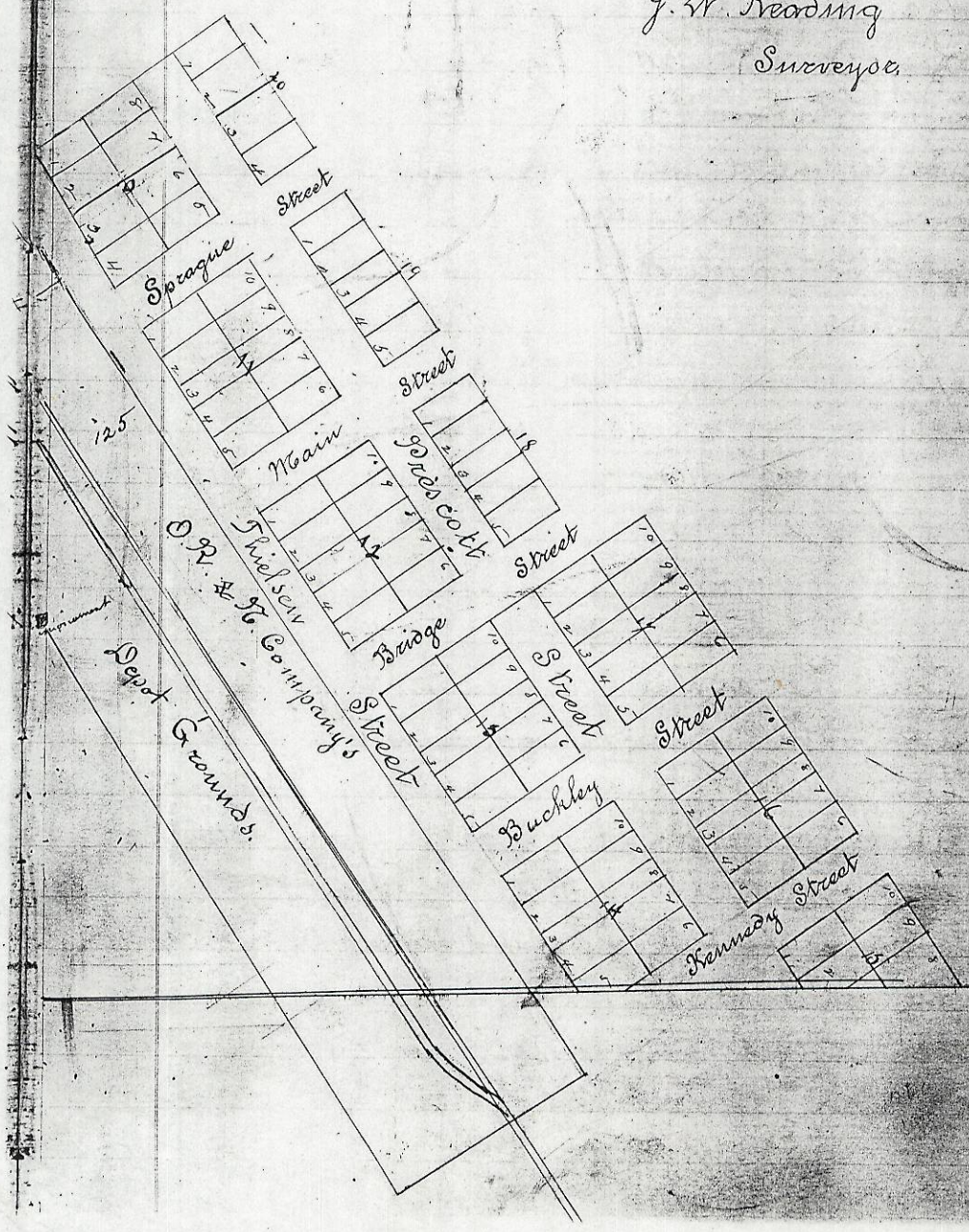
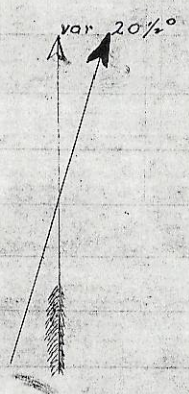


Plat of J. H. Koontz's
 Addition
 to
 Echo City, Umatilla Co.
 Oregon.

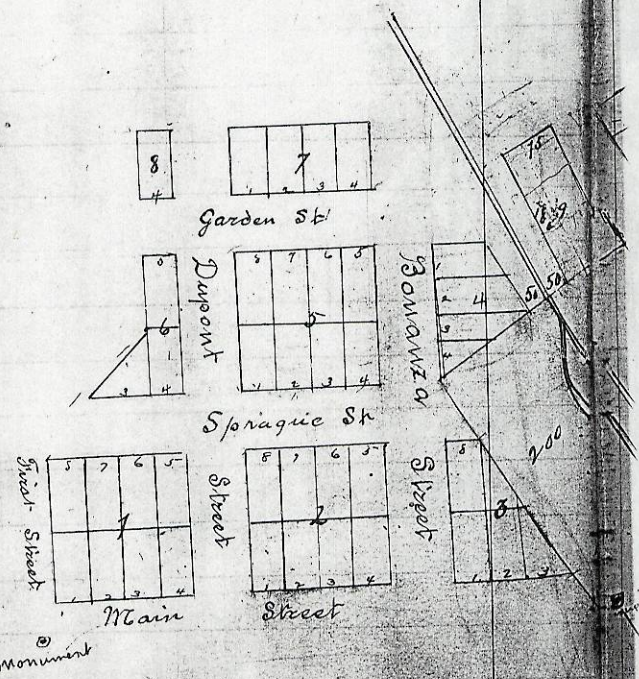
Situated in the N.E. and N.W. quarter of Section
 16, Township 3, North Range 29, East.
 Scale 1 inch to 100 feet

G. W. Reading
 Surveyor.



Description

The full Blocks North of the Original Town site, are 200 by 200 feet
 The full lots 50 by 100 ft
 The full lots Blocks lying N.E. of the original Town site, are 246 by 200 ft. The full lots 50 by 100 feet, except lots 5 & 8 in Blocks 11, 12, 13, 14, 16, 17, 18 & 19, they being 46 by 100 ft. and lots in Block 9, they being 75 by 180 ft
 All streets 80 feet wide excepting Shielsen St. it being 60 feet



Original Town Site

Filed Nov 11, 1887 at Astoria Ore
 J.P. Bushee Clerk