

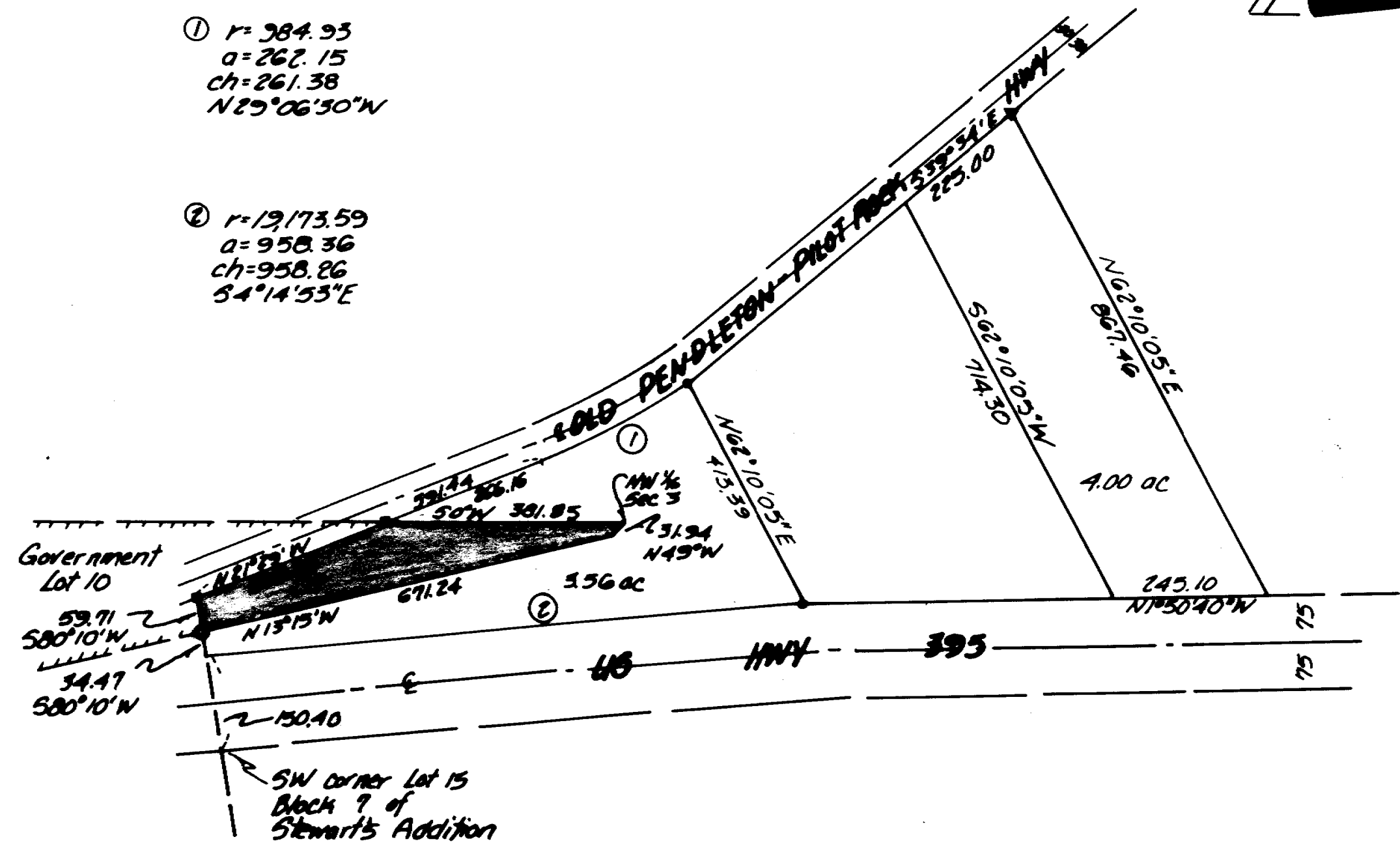


① $r=984.93$
 $a=262.15$
 $ch=261.38$
 $N29^{\circ}06'30''W$

② $r=19,173.59$
 $a=958.36$
 $ch=958.26$
 $S4^{\circ}14'53''E$

NARRATIVE

The purpose of this survey was to partition off a 3.56 acre parcel. -
 Bearings and distances are based upon a survey by Donald Staebler for Wyland Ranches dated 2-22-73.



- denotes set 5/8" x 30" iron pin w/aluminum cap stamped PLS 933
- denotes find 1/2" smooth steel pin set by Staebler for Wyland Ranches dated 2-22-73
- denotes find 2 1/2" Dept of Agriculture Brass Cap Cor #31 1938
- ▼ denotes find 1 1/2" O.D. steel pipe set by Staebler for Wyland Ranches dated 2-22-73

KRUMBEIN ENGINEERING LTD. ENGINEERS - SURVEYORS - PLANNERS 281 S.E. Second Pendleton, Oregon	Scale 1"=200'	Des. By MLD	Eng. No. 87-01	Revision 1 5-17-87
	Date 2-8-87	Chk. By DMS	Job No.	Revision 2

Survey for MALCOLM NW 1/4, Sec 3, T1N, R32E, W.M.	REGISTERED PROFESSIONAL LAND SURVEYOR	RECEIVED BY Umatilla County Surveyor Date <u>6-88</u> Rec'd By <u>KA</u> No. <u>88-29-A</u>
	OREGON JULY 17, 1979 DAVID H. KRUMBEIN 933	