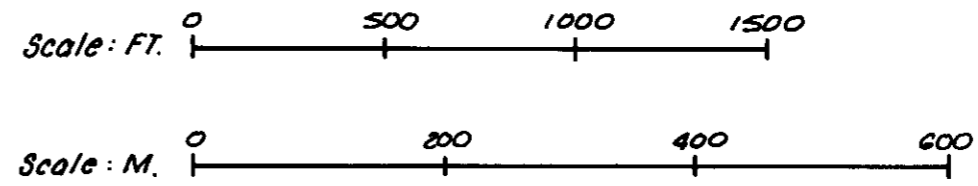
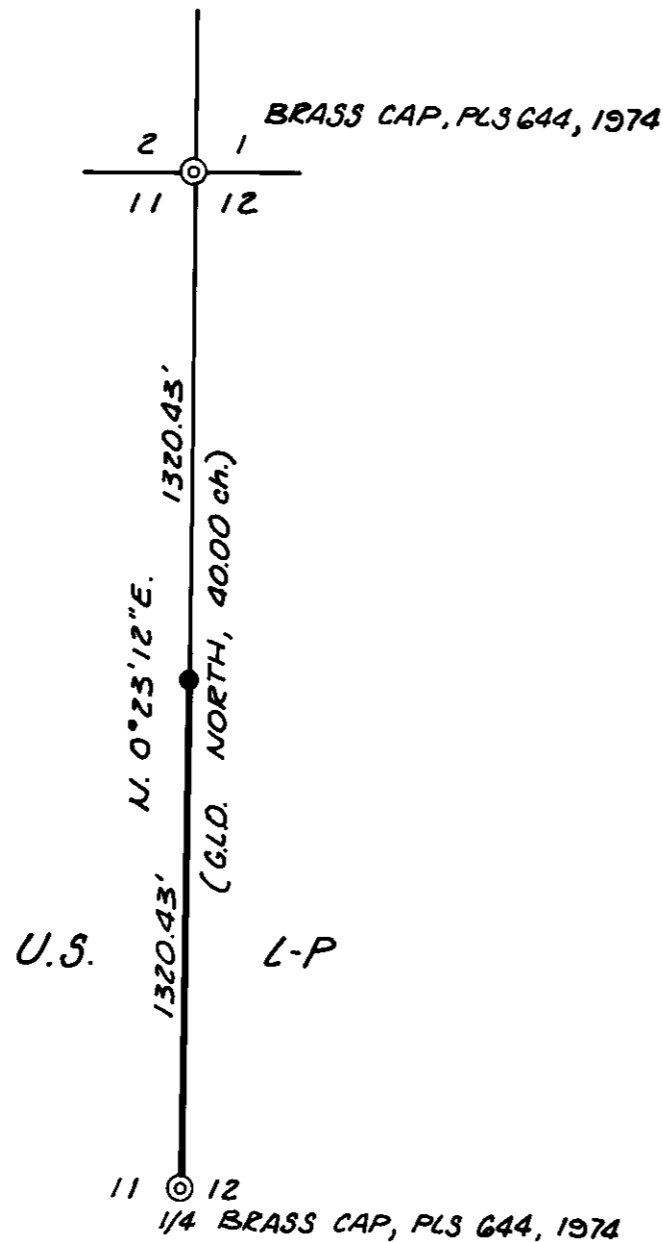


PLAT OF 1989 SURVEY FOR LOUISIANA-PACIFIC CORP.

NW $\frac{1}{4}$ SECTION 12, T.5S., R.30E., W.M.
UMATILLA COUNTY, OREGON
REFER TO FIELD NOTES, BOOK 1 OF THIS SURVEY



LEGEND

- ⊙ CORNER FOUND PROPERLY MONUMENTED
- CORNER SET THIS SURVEY FROM MEASUREMENT;
2 1/2" x 30" ALUM. PIPE WITH 2 1/2" ALUM. CAP;
CERTIFIED RECORD OF LAND CORNER MONUMENTATION
FILED WITH THIS PLAT.
- SECTION LINE.
- PROPERTY BOUNDARY POSTED THIS SURVEY.

BASIS OF BEARINGS:
SOLAR 3 SEPT 89 AT
1/4 11/12.

HISTORY AND NARRATIVE

REFER TO: 1989 SURVEY FOR LOUISIANA-PACIFIC CORP.
NW $\frac{1}{4}$ SECTION 12, T.5S., R.30E., W.M., UMATILLA CO., OREGON
HISTORY AND NARRATIVE FILED WITH THIS PLAT.

CERTIFICATE OF SURVEY

I, FAYETTE S. MUNRO, A REGISTERED PROFESSIONAL LAND SURVEYOR IN THE STATE OF OREGON, HEREBY CERTIFY THAT THIS PLAT AND THE HISTORY AND NARRATIVE HEREIN REFERRED TO ARE A CORRECT REPRESENTATION OF A SURVEY PERFORMED BY ME OR UNDER MY DIRECT SUPERVISION DURING MAY AND SEPTEMBER, 1989, FOR LOUISIANA-PACIFIC CORP., IN ACCORDANCE WITH THE STATUTES OF THE STATE OF OREGON AND THE ARTICLES OF MY CONTRACT.

Fayette S. Munro

FAYETTE S. MUNRO
REGISTERED PROFESSIONAL SURVEYOR
OREGON LICENSE NO. 1832

REGISTERED
PROFESSIONAL
LAND SURVEYOR

Fayette S. Munro

OREGON
JULY 31 1979
FAYETTE S. MUNRO
1832

RECEIVED BY

12-89
KH
89-115-A

1989 SURVEY FOR LOUISIANA-PACIFIC CORP.
NW $\frac{1}{4}$ Section 12, T.5S., R.30E., W.M.; Umatilla Co., Oregon
HISTORY AND NARRATIVE

HISTORY

Frank W. Campbell under G.L.O. contract number 468, dated April 12, 1883, subdivided T.5S., R.30E. and set the NW corner and the W $\frac{1}{4}$ corner of Section 12.

Duane Griffith, PLS 644, remonumented these corners in 1974 under a U.S.D.A. Forest Service contract.

NARRATIVE

This survey was performed under a contract with the Louisiana-Pacific Corp. in May and September, 1989. The purpose of the survey was to establish the west line of Louisiana-Pacific land in SW $\frac{1}{4}$ NW $\frac{1}{4}$ Section 12 and post same.

The controlling corners were tied in by traverse or approved radial survey procedure using a Lietz TM-10 theodolite and a Lietz Red-2 E.D.M.

The NW corner of SW $\frac{1}{4}$ NW $\frac{1}{4}$ Section 12 was set and monumented according to the Manual and the contract specifications.

Property boundary was posted with 6' steel fence posts and Forest Service "Property Boundary" signs (Company land adjoins the Umatilla National Forest.)..

Fayette S. Munro
P.O. Box 242
Pendleton, Or. 97801

REGISTERED
PROFESSIONAL
LAND SURVEYOR

Fayette S. Munro

OREGON
JULY 13, 1979
FAYETTE S. MUNRO
1832

RECEIVED BY

Umatilla County Surveyor

Date 12-89

Rec'd by KA

No. 89-115-A