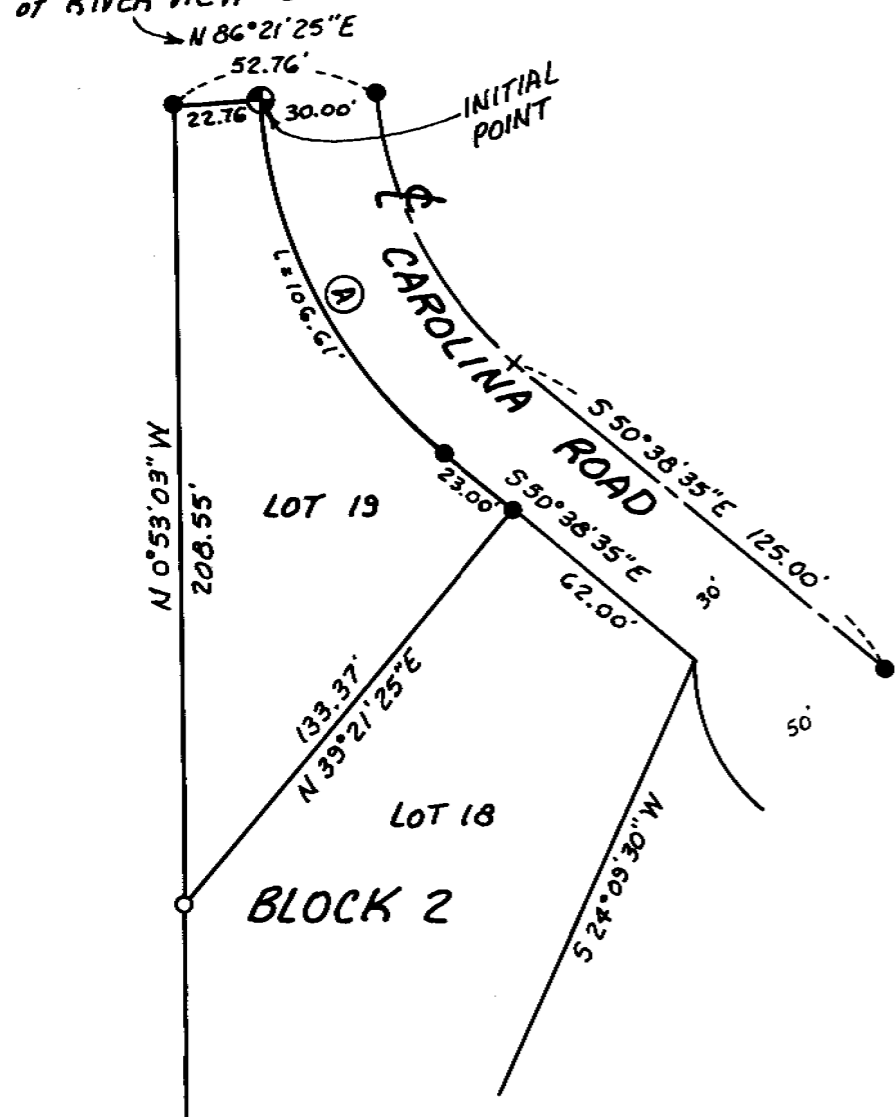


Bearing Base: 1980 Plat of "RIVER VIEW TERRACE"



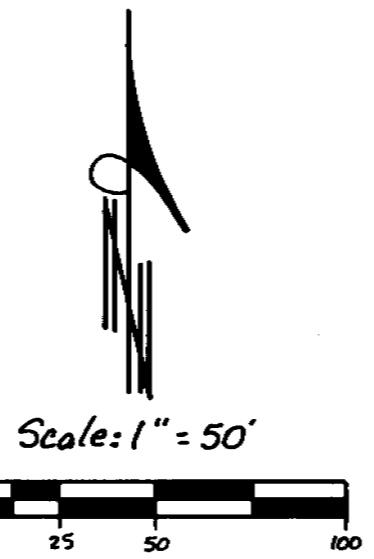
CURVE DATA					
No.	Radius	Arc	Chord	Bearing	Delta
A	130.00'	106.61'	103.66'	N 27° 08' 06\"W	46° 59' 26\"

NOTE: There is a 6 ft. utility easement on all lot lines.

NARRATIVE:

The purpose of this survey is to find or set the corners of Lot 19, Block 2, "RIVER VIEW TERRACE," for a pending sale. I found three of the five corners of this lot and also two street centerline monuments. The two missing corners were reset by retracing the original 1980 survey by Tom Lagier. One of those corners, the Initial Point at the Northeast corner of this lot, was found in a horizontal position so I reset it and placed one of my plastic caps on it.

REGISTERED PROFESSIONAL LAND SURVEYOR
G. Dennis Edwards
 OREGON
 JULY 16, 1971
 G. DENNIS EDWARDS
 951
 RENEWS 12/31/95



LEGEND:

- Found 5/8" rebar set by Tom Lagier, 1980, Plat of "RIVER VIEW TERRACE."
- Set 5/8" x 30" rebar with plastic cap #951.
- ⊕ Reset INITIAL POINT of "RIVER VIEW TERRACE," 5/8" rebar in 6" concrete cylinder with my plastic cap #951.

In SE 1/4 Section 18, T5N, R28E, W. M.,

Survey for WACO INC. & ERA UNIVERSAL
 In Lot 19, Block 2, "RIVER VIEW TERRACE," to the
 City of Umatilla, Umatilla County, Oregon
 10/5/95 Job #59509140
 Edwards Surveying P.O. Box 763
 541-567-3336 Hermiston, Oregon 97838

RECEIVED BY
 Umatilla County Surveyor
 Date 10-95
 Rec'd by KK
 No. 95-176-A

95-176-A