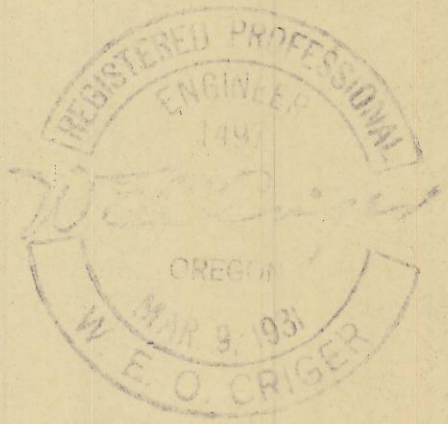
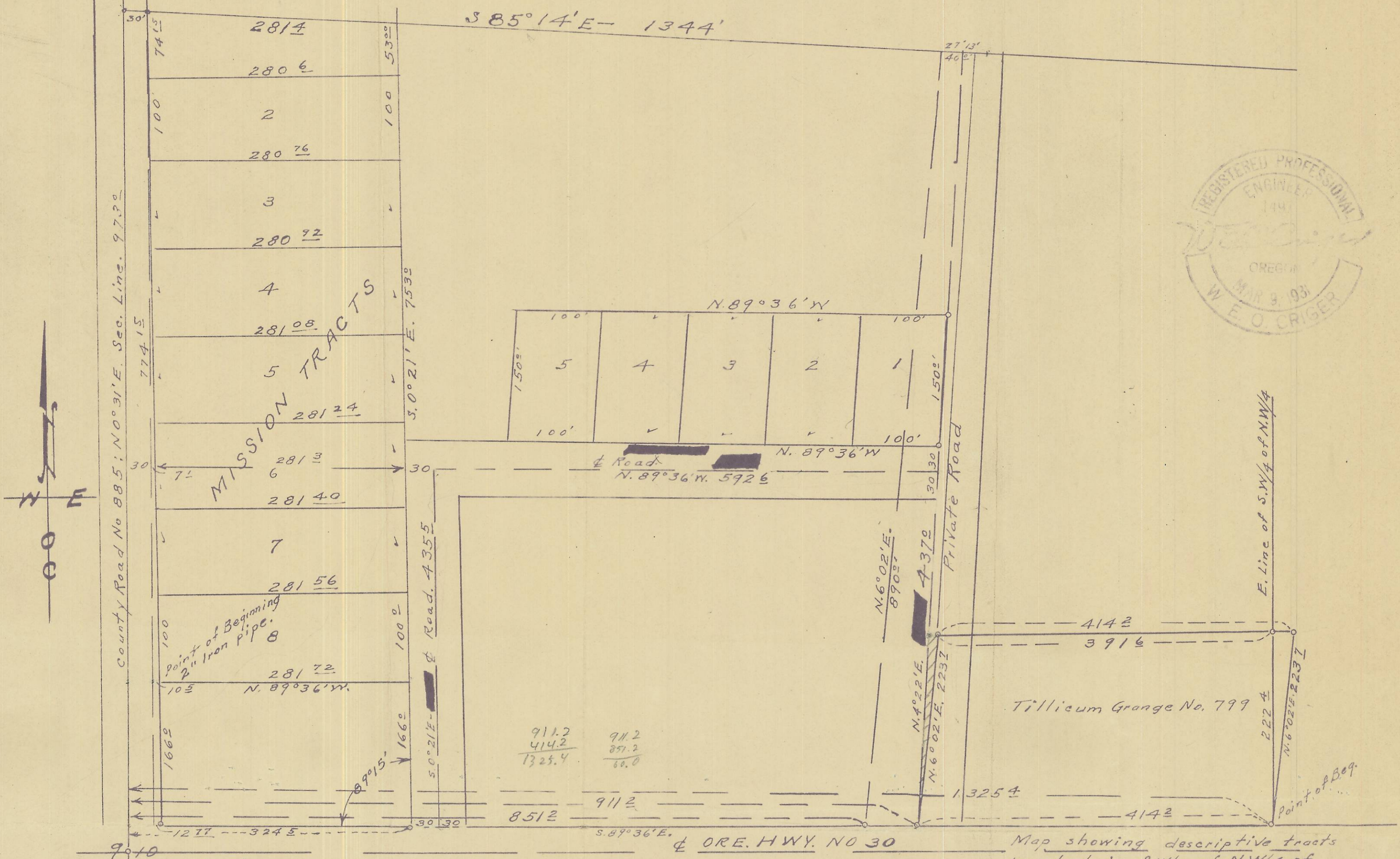


Pendleton Grain Growers.

O.W.R. & N. R/W
N. 85° 14' W.



(Bearing of & Description of)
(Easement Revised - 7-31-1952)
W.E. Criger.

Map showing descriptive tracts
Located in S.W/4 of N.W/4 of
Sec. 10-T.2N., R.33 E. W.M.
Surveyed, staked & platted April 1952.
By W.E.O. Criger. Scale 1" = 100'

06-59-A