

3029  
3132

N. 1/4 cor. of  
Sec. 32.

N.E. 1/4 of N.E. 1/4

N.W. 1/4 of N.W. 1/4

N.E. 1/4 of N.W. 1/4

2° C.L. 9 ch.  
594.2'

S. 51° 40' W 114.10 ch.  
(930.6 ft.)

S. 53° 10' W  
Adams. (2363 ch.  
1559.58')

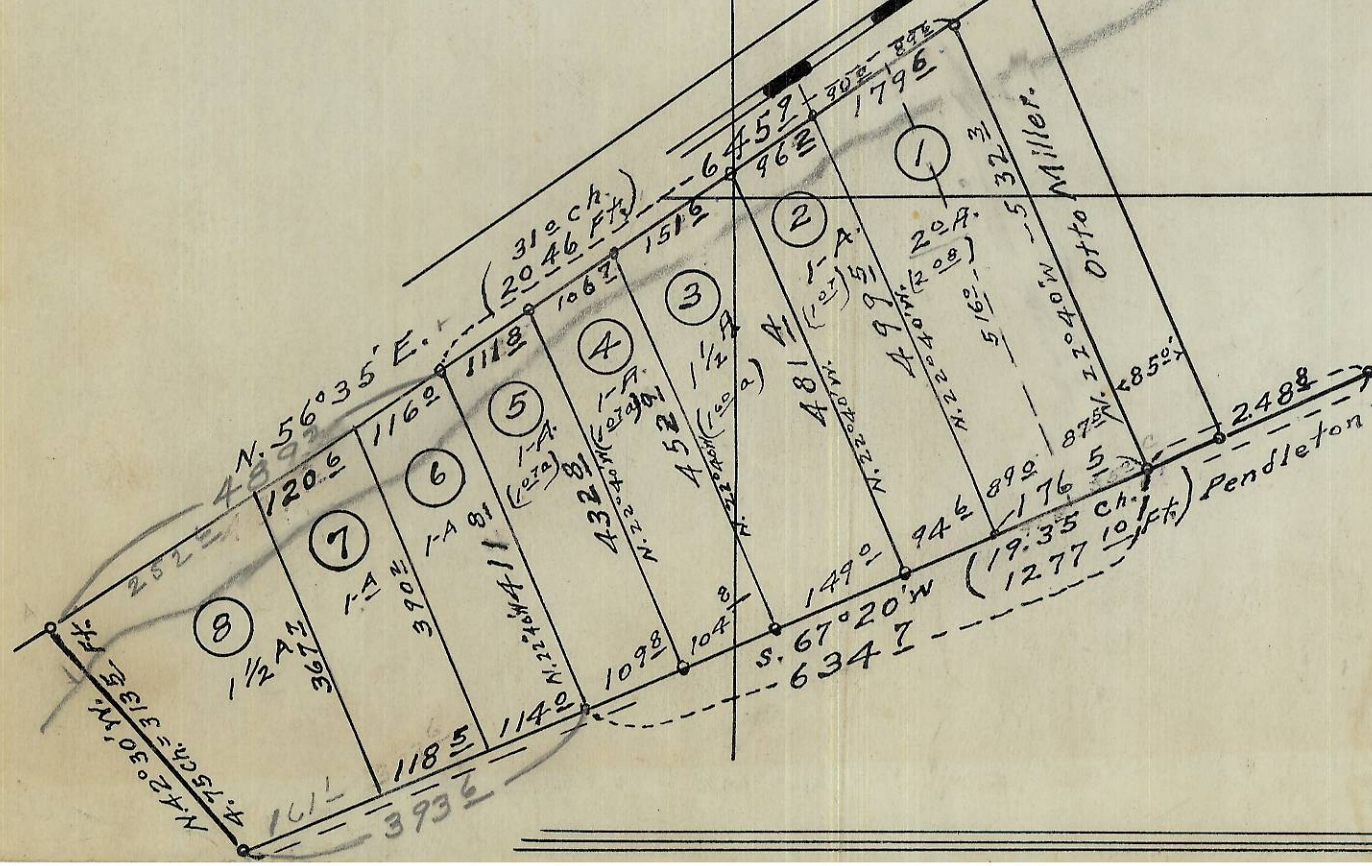
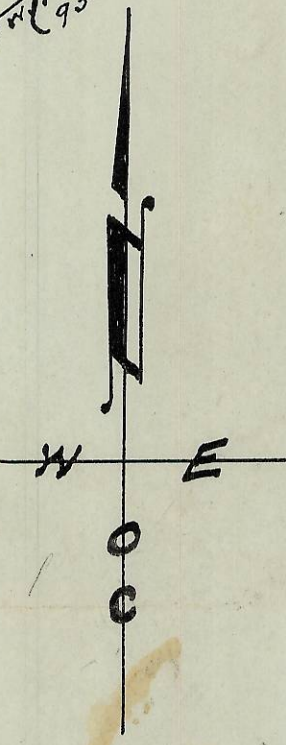
Wild Horse Creek.

O.W.R. & N.Co. R.R.

County Road No. 374

Otto Miller.

Pendleton



Map showing  
descriptive tracts in N.W. 1/4 of Sec. 32,  
and N.E. 1/4 of Sec. 31, T. 3 N., R. 33 E. W.M.  
Umatilla County Oregon -  
Scale: 1 inch = 200 feet.

Myrtle Deman - Ph. 4854  
Bob Larsen - Ph. 348  
1935  
on Wild Horse Cr.

06-87-A