

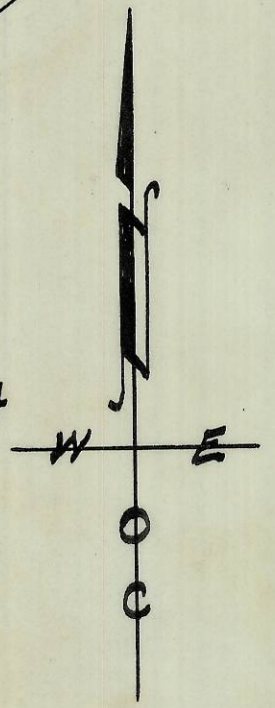
30 29
31 32

N.W/4 of N.W/4

O.W.R.R. & N.CO. - R.R.

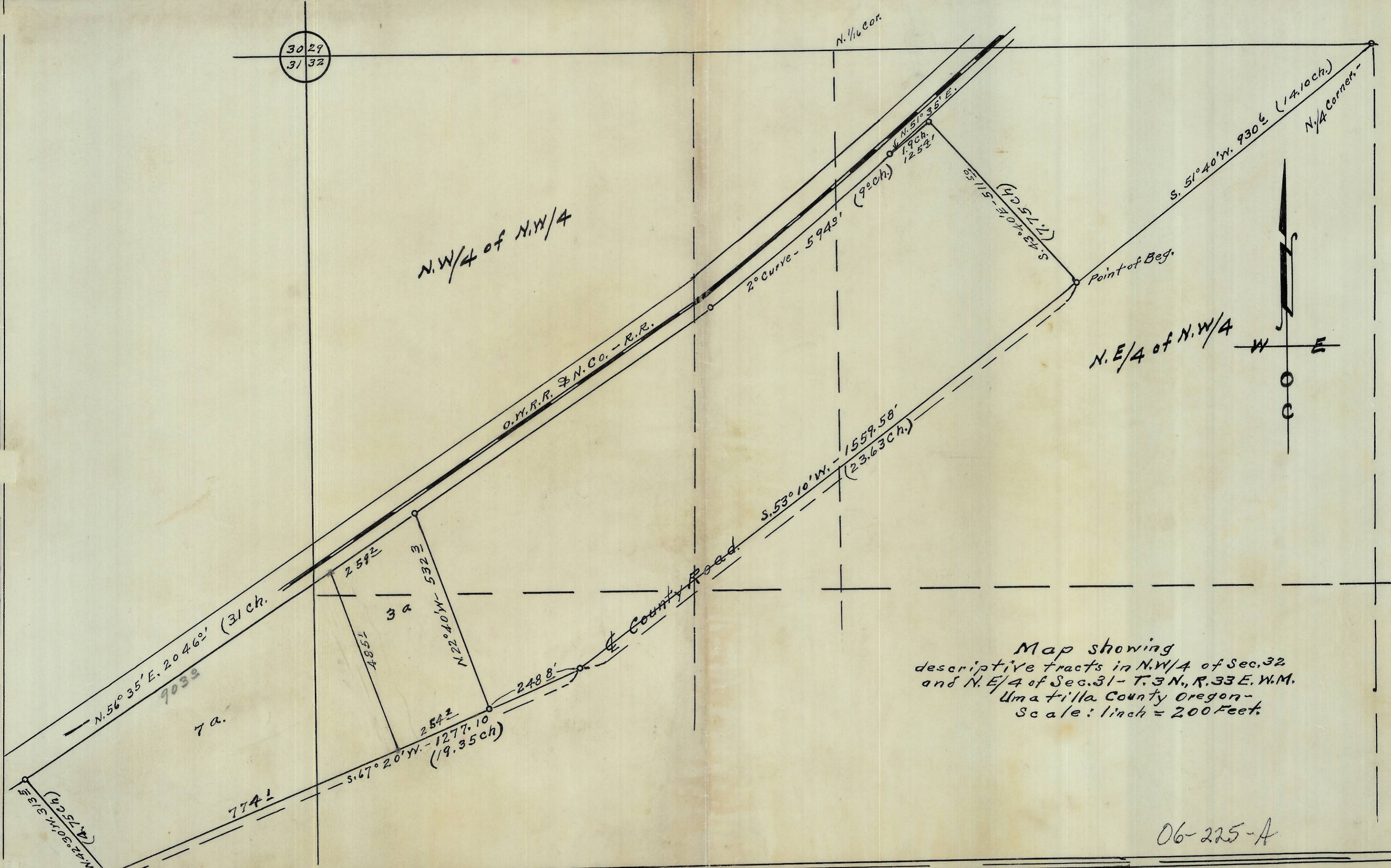
N. 1/4 cor.

N.E/4 of N.W/4



Map showing
descriptive tracts in N.W/4 of Sec. 32
and N.E/4 of Sec. 31 - T. 3 N., R. 33 E. W.M.
Umatilla County Oregon -
Scale: 1 inch = 200 Feet.

06-225-A



7 a.

3 a

774 1

254 3
S. 67° 20' W. - 1277.10
(19.35 ch)

248 8'

N. 22° 40' W. - 522 3

259 2

485 1

903 2

N. 56° 35' E. 2046' (31 ch.)

2° Curve - 5949' (9° ch.)

N. 51° 35' E.
125 3'

S. 43° 40' E. - 511.59
(42.55 ch.)

S. 51° 40' W. 930 6 (14.10 ch.)
N. 1/4 Corner

Point of Beg.