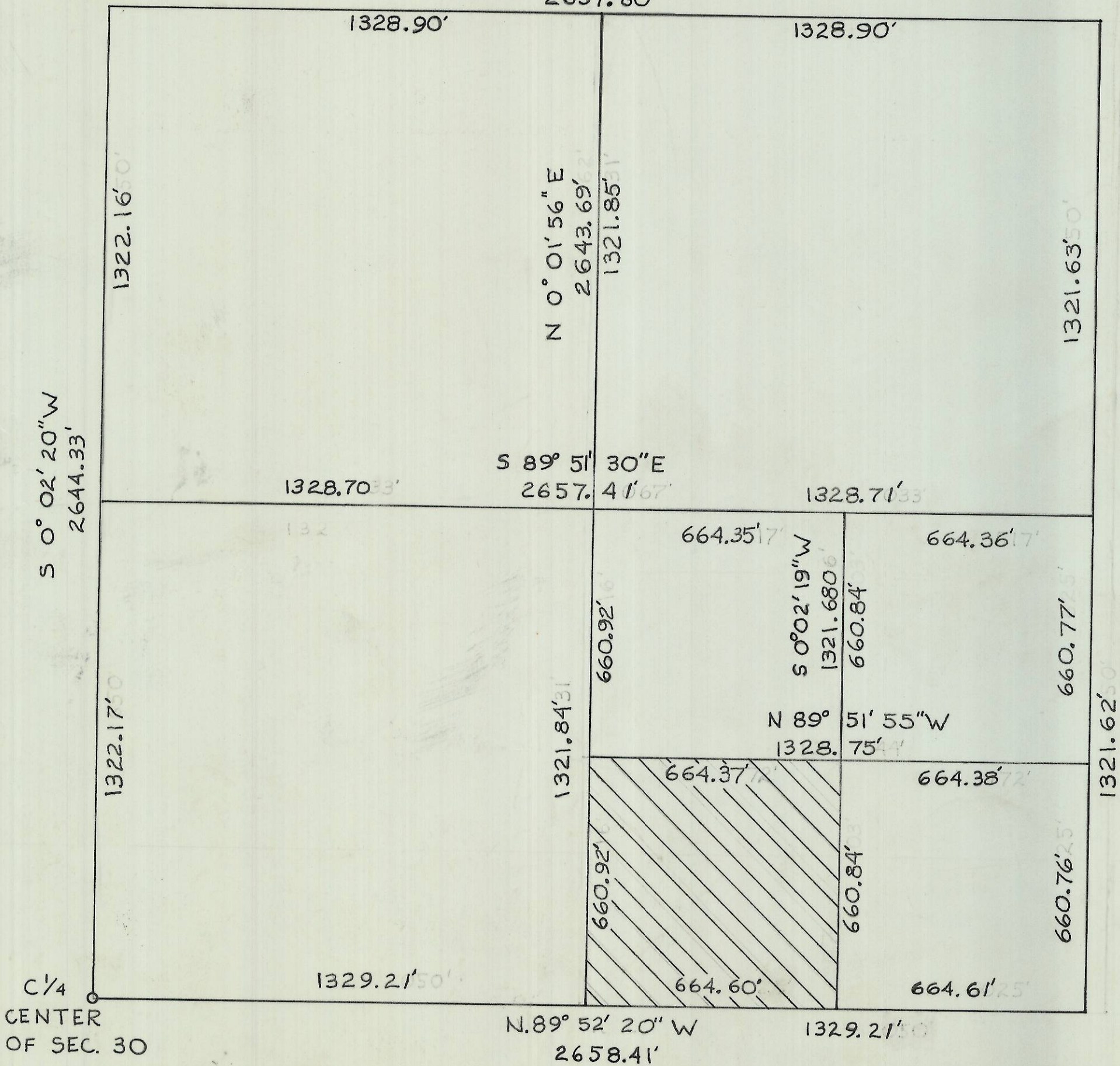


# N.E. 1/4 SECTION 30

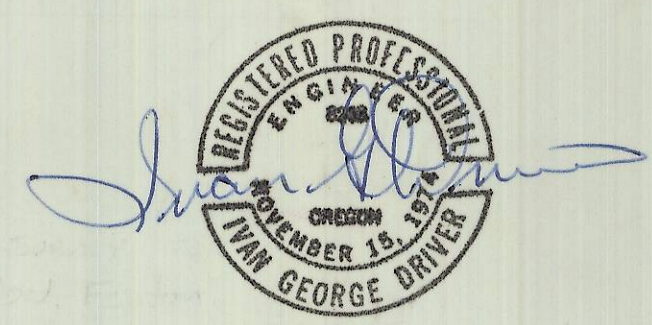
NE 1/4 SEC. 30

S 89° 50' 40" E  
2657.80'



NOTE: BEARINGS SHOWN ARE BASED ON PREVIOUS SURVEYS DONE BY THIS COMPANY FOR THE PORT OF UMATILLA. SEE DRAWING NUMBER 72-291-C.

NOTE: BEARINGS SHOWN ARE BASED ON PREVIOUS SURVEYS DONE BY THIS COMPANY FOR THE PORT OF UMATILLA. SEE DRAWING No. 72-291-C



N-11-A

SURVEY FOR DON FENTON		WAYNE HARRIS CO. INC. ENGINEERS SURVEYORS PENDLETON, ORE.			
SCALE	DATE	DWN.	CHK.	DWG. NO.	
1"=300'	6-30-77	S.K.	I.O.	78-408A	