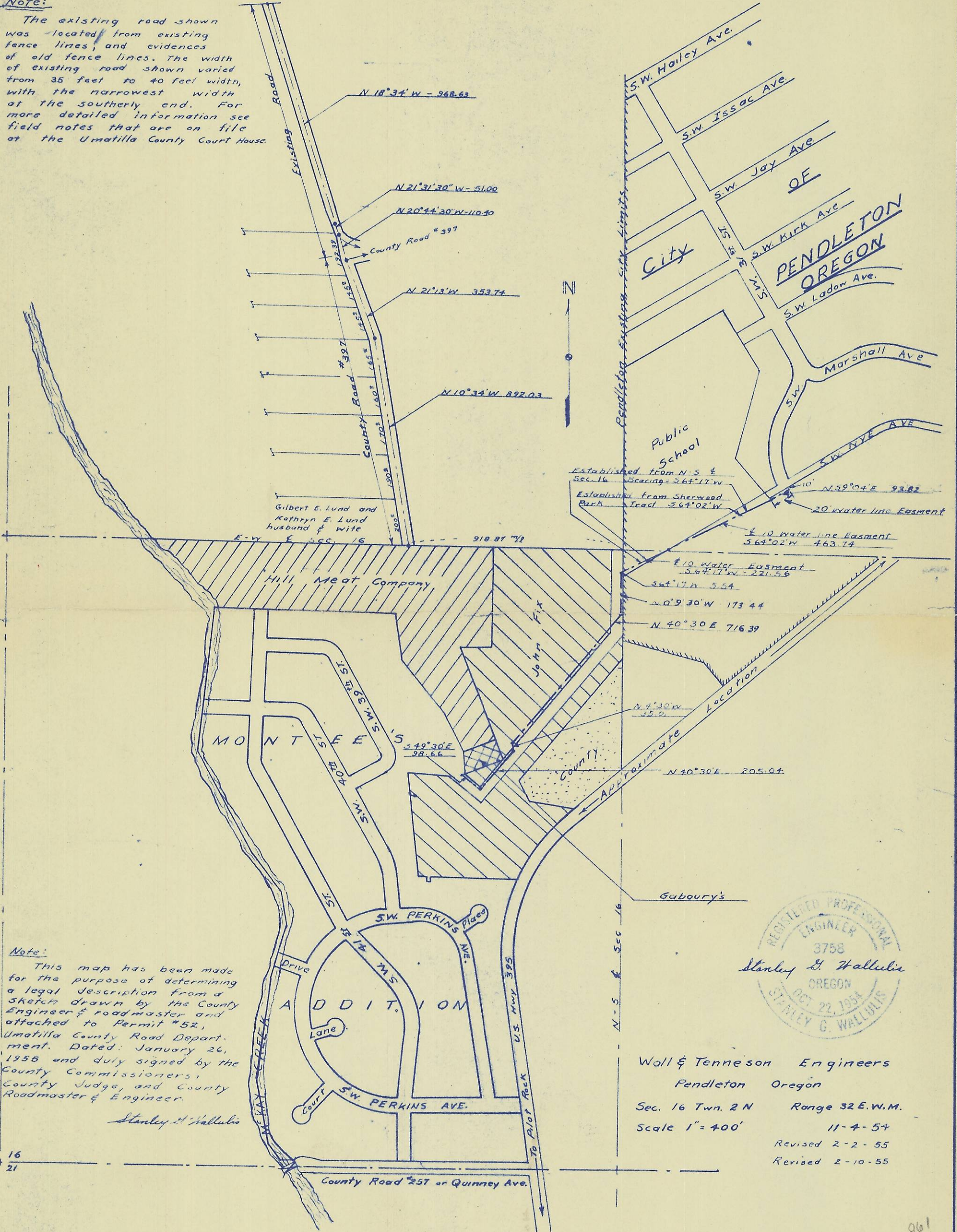


Note:

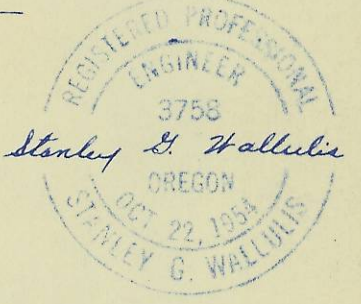
The existing road shown was located from existing fence lines, and evidences of old fence lines. The width of existing road shown varied from 35 feet to 40 feet width, with the narrowest width at the southerly end. For more detailed information see field notes that are on file at the Umatilla County Court House.



Note:

This map has been made for the purpose of determining a legal description from a sketch drawn by the County Engineer & roadmaster and attached to Permit #52, Umatilla County Road Department. Dated: January 26, 1955 and duly signed by the County Commissioners, County Judge, and County Roadmaster & Engineer.

Stanley G. Wallulis



Wall & Tenneson Engineers
 Pendleton Oregon
 Sec. 16 Twn. 2 N Range 32 E. W.M.
 Scale 1" = 400'
 11-4-54
 Revised 2-2-55
 Revised 2-10-55

17 16
20 21