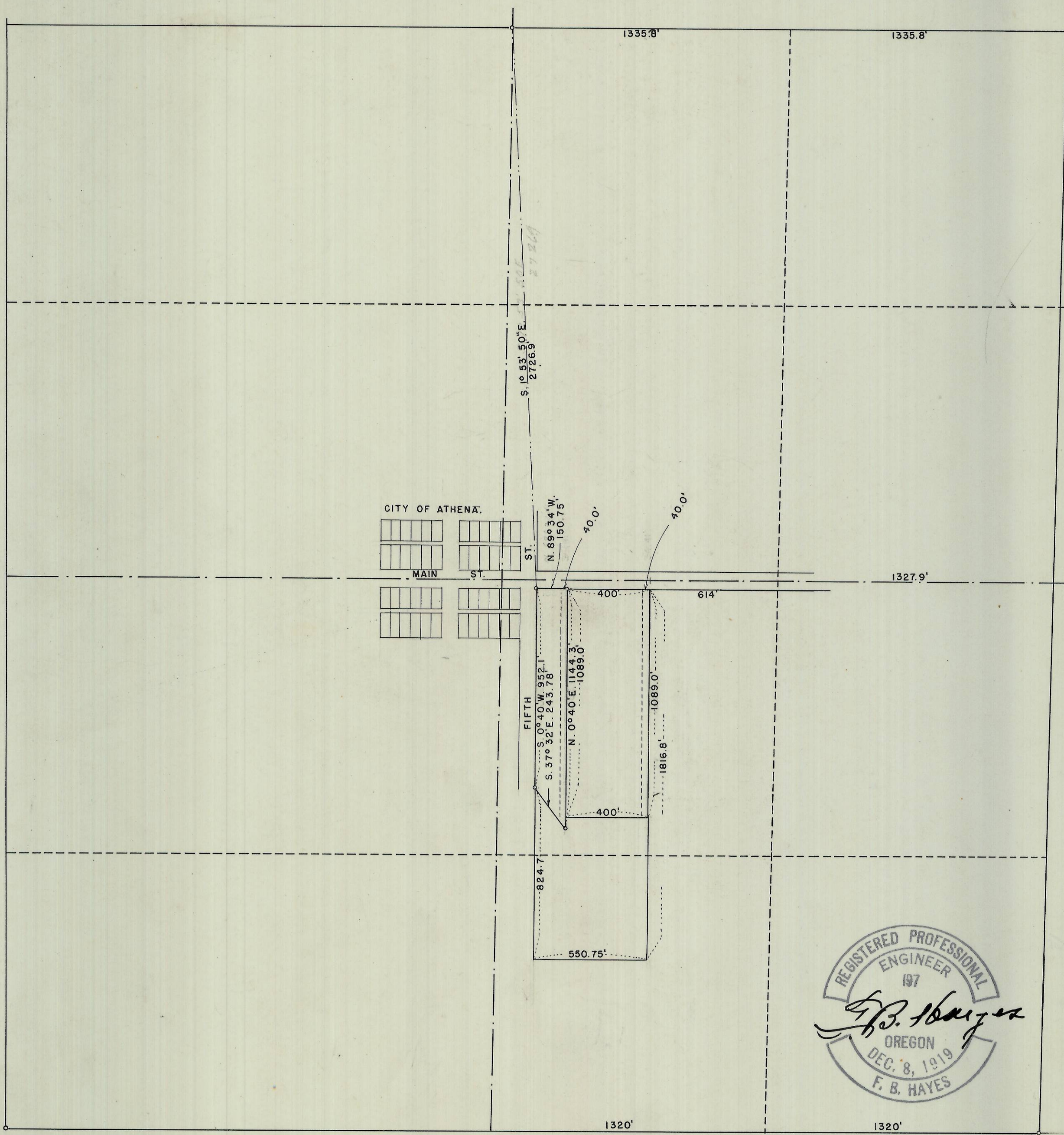


1/2" = 400'



HAYES & HARRIS ENGINEERING		
SURVEY FOR		
HOUSING AUTHORITY OF		
UMATILLA COUNTY, OREGON,		
A PUBLIC BODY CORPORATE.		
SEC. 19, T. 4 N., R. 35 E.W.M.		
SCALE	DATE	DRAWN BY
1" = 400'	4/20/55	F.B.H.



Q-718-A