

W.C. Ind. "X" in wall  
see note # 2  
sta. L 58+18.2

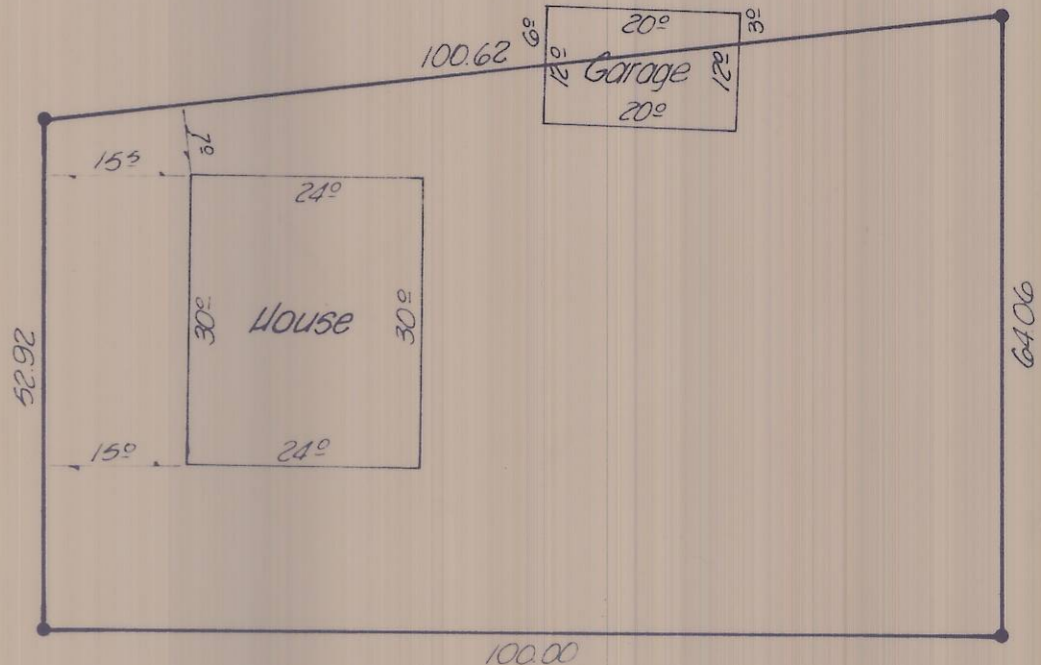
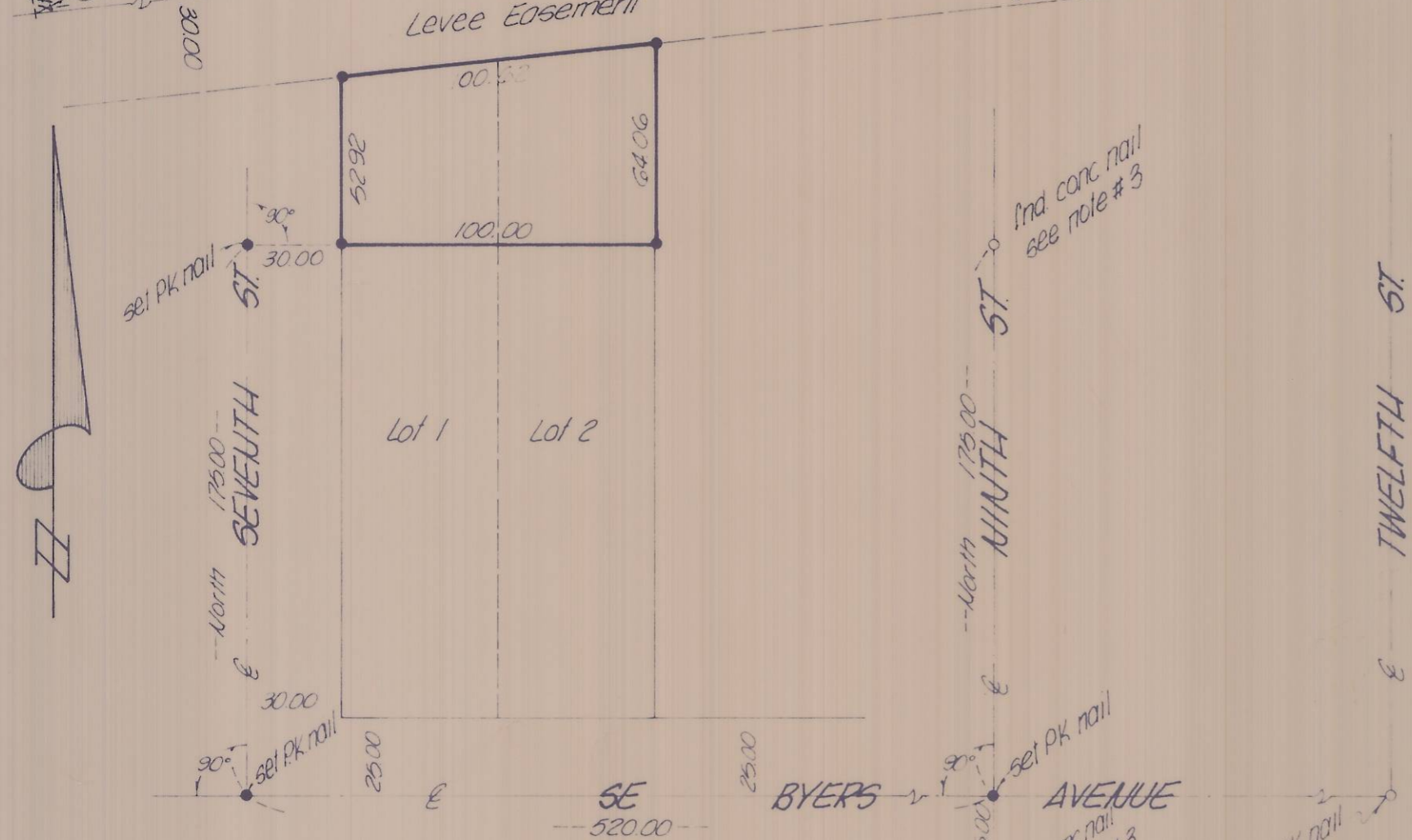
(N 82° 56' E)  
N 83° 38' 43" E

Ind Brass  
screw & washer  
see note # 4

Ind conc nail  
see note # 3

Ind conc nail  
see note # 3

Ind PK nail  
city mon.



DETAIL  
1" = 20'

- o denotes monument found as noted
- denotes 1/2 in iron pin set, except as noted
- ( ) denotes bearing of record

**NOTES**

- Bearings are based upon the original Plat of Jacobs Addition to the City of Pendleton, Oregon
- "X" in wall is a witness corner for station L 58+18.2, set by Stanley G Waitulis as recorded on a survey dated July 12, 1961, Umatilla County Survey Records drawing no. Q-89-Ax
- Concrete nail, set by David H. Krumbain as recorded on a survey dated March 21, 1973, Umatilla County Survey Records drawing no. I-12-A
- Brass screw and washer marked Um-18, Corps of Engineers sta. L 53+14.0

RECEIVED BY  
Umatilla County Surveyor  
Date 7-81  
Rec'd By BLS  
No. S-98-A

<b>K</b> KRUMBEIN ENGINEERING CO. ENGINEERS - SURVEYORS - PLANNERS 221 S. Main, Pendleton, Oregon	SCALE 1" = 50'
	DATE June 29, 1981
Survey for <b>BUD SCHLUTER</b> Portion of Lots 1 & 2, Blk B, Jacobs Addition, Pendleton	DRN. BY MH
	CKD. BY DHK
	DRNG. NO. 81-16B

S-98-A No. 81-73