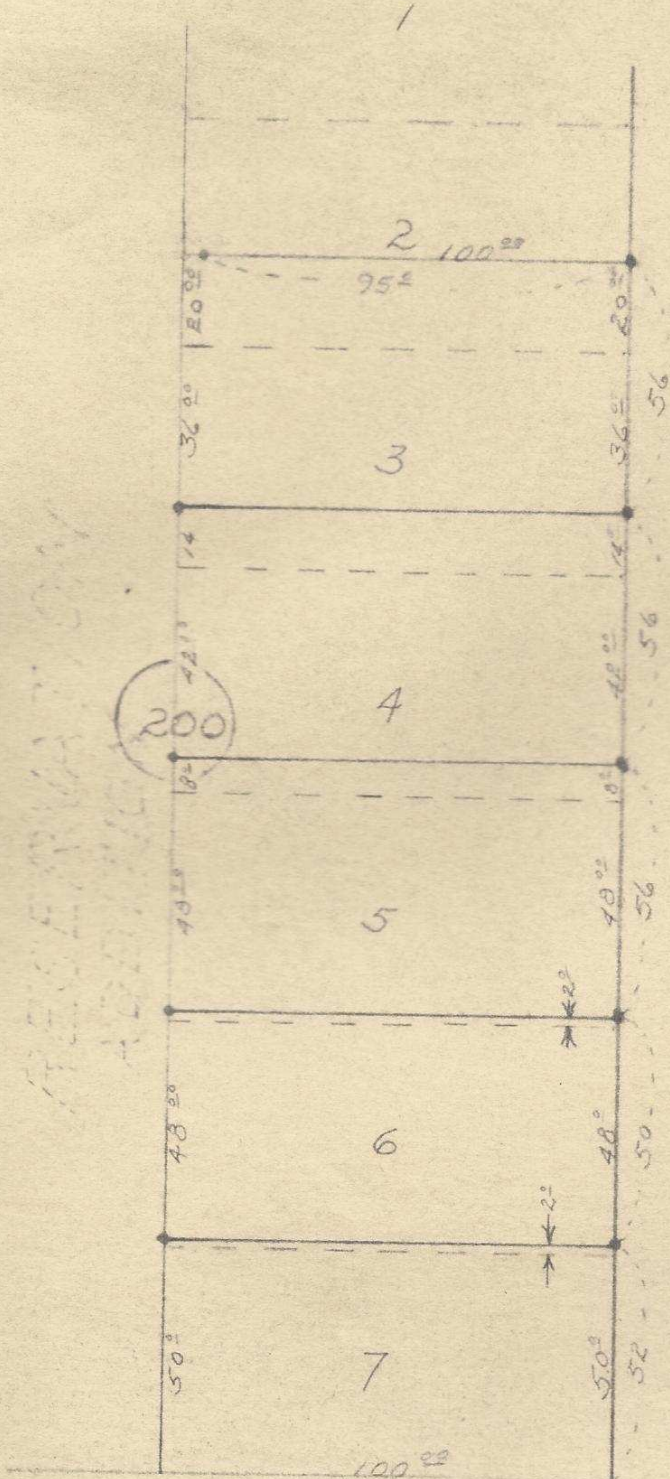


LEGEND

• 1/2 x 24 IRON PIN



MESEPHATION
 ADDITION

S. W. 19th ST.

WALLS HEIGHTS
 SECOND ADDITION

S.W. HAILEY AVE.

REGISTERED PROFESSIONAL
 ENGINEER
 3758
Stanley G. Wallulis
 OREGON
 OCT. 22, 1954
 STANLEY G. WALLULIS

99-225-AX
 2N3210CC

SCALE C.A.E. 1" = 40'	DATE: 6-11-56
WALL AND TENNESON	
Engineers	
The Dalles	Oregon