

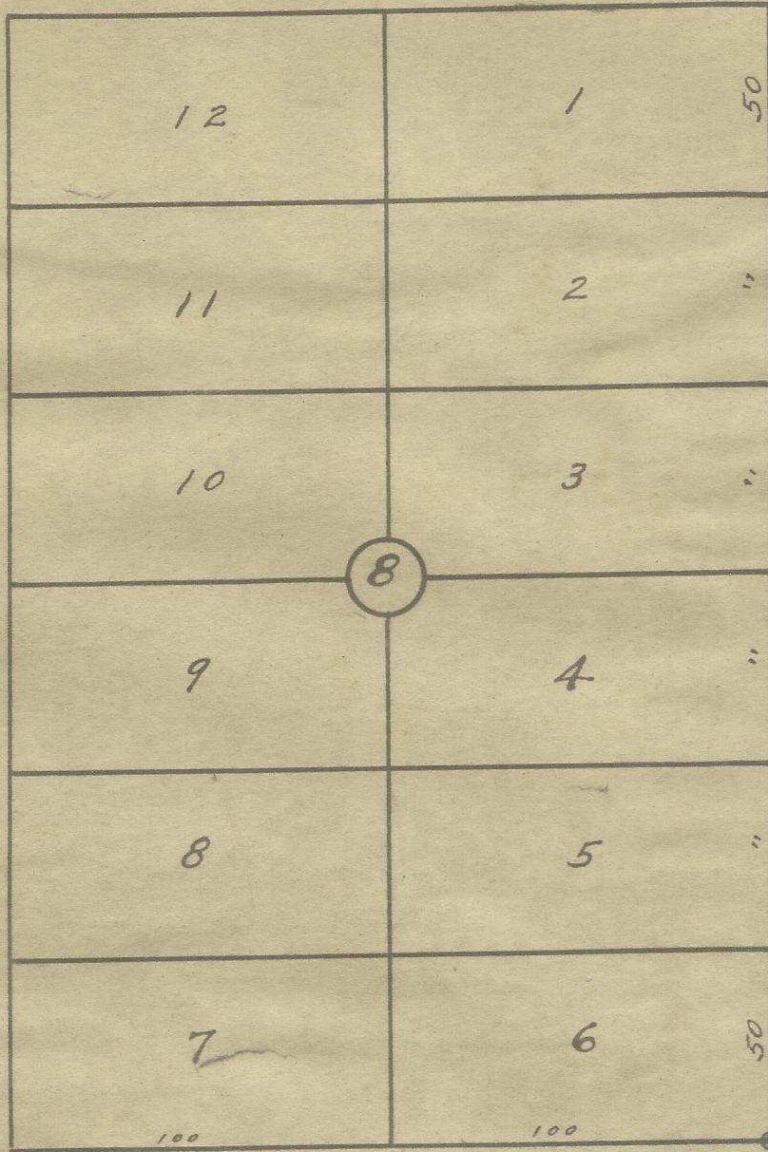
80

60

N. W. Ellis Ave.

60

N. Main Street.



N. E. First St.

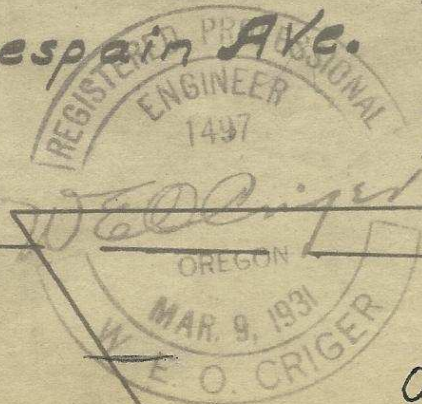


N. W. Despain Ave.

Plat showing  
 Block 8 of Switzler's Add'n  
 To the town, now City of  
 Pendleton, Oregon.  
 Surveyed, staked, and platted  
 Feb. 1949 - By W. E. O. Criger.  
 Scale: 1 inch = 50 feet.

2032 3DD

Sec. 3 T. 2. N., R. 32 E. W. M.  
Sec. 10



06-112-Ax

F. B. Hayes.