

60

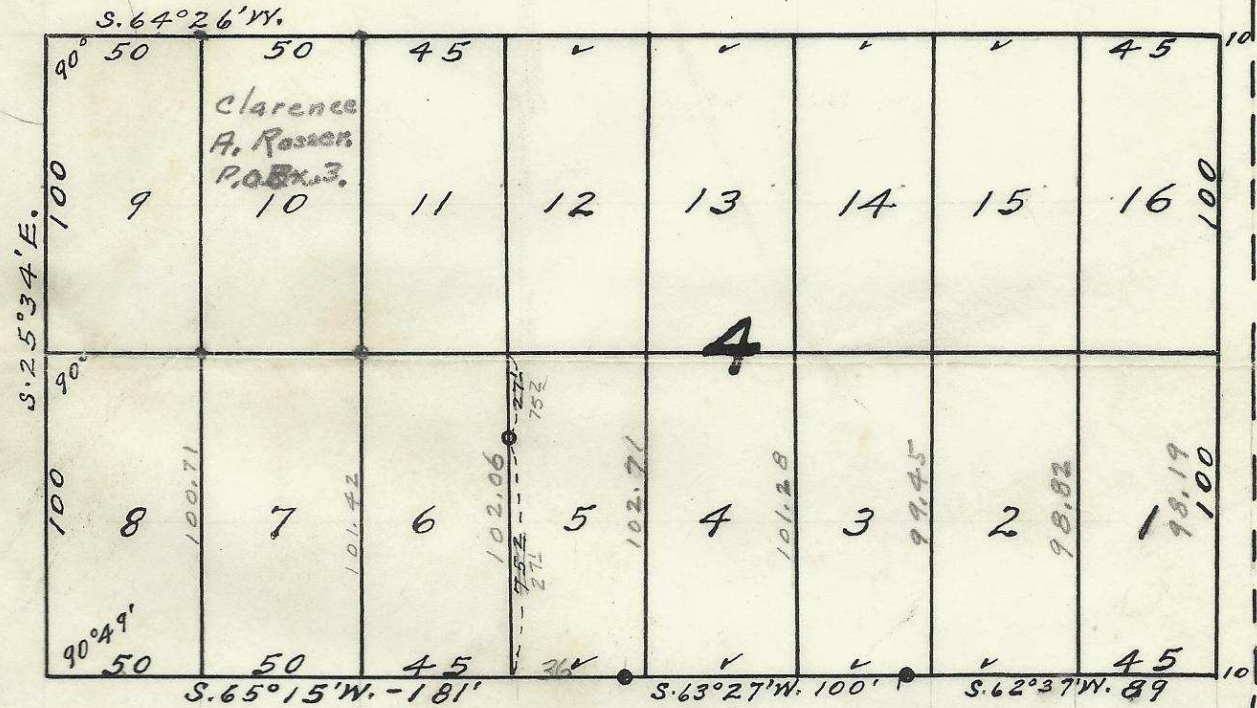
50

George St.

Hill St.

60

270°



Delphi St.

60

Main Street.  
(Old Oregon Trail)

Plat of

Block 4 of Geanakopulos Addition  
Town of Doris - (Now Rieth)  
Umatilla County, Oregon.

Surveyed, staked, & platted - August - 1956

By J. C. Payne & W. E. O. Criger.

Scale 1 in. = 60 Ft.

(Original survey - by Aubrey E. Perry - August - 1925)

REGISTERED  
OREGON  
LAND SURVEYOR

J. C. Payne  
J. C. PAYNE  
NOV. 9, 1951  
279

2031 12DD

06-127-Ax

7