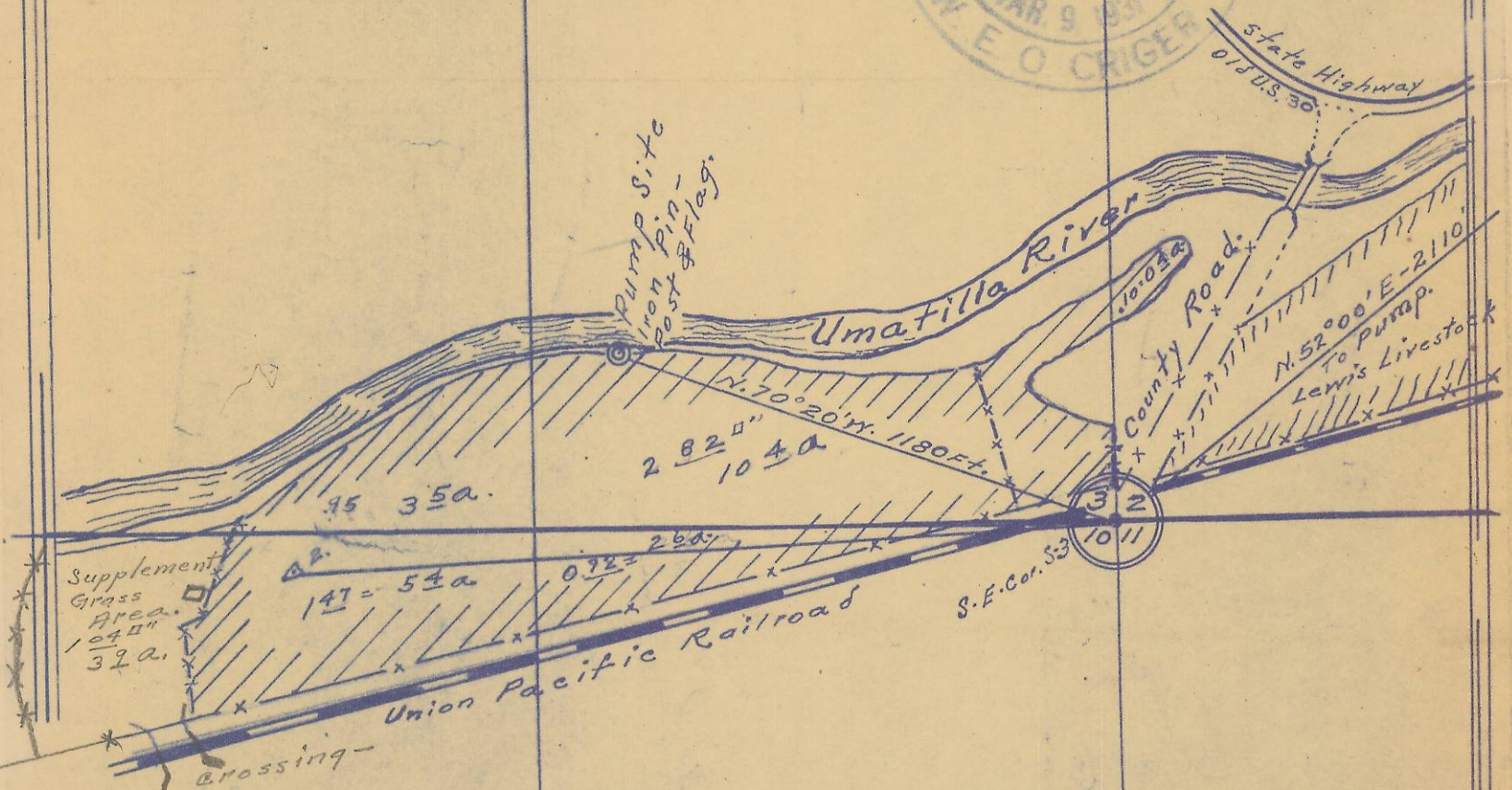
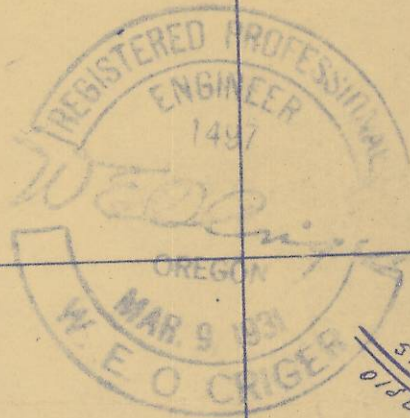
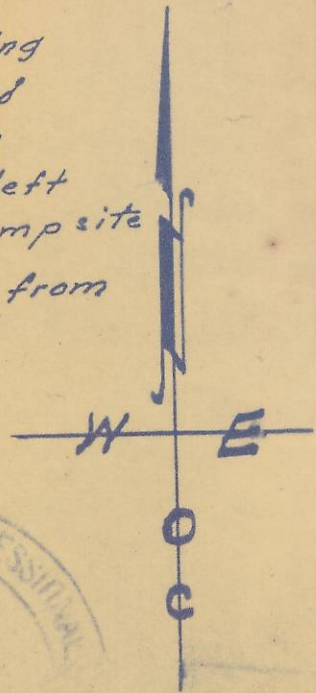


Map showing part of
 Sec. 3 and 10-T. 2N., R. 30 E. W.M., - owned and operated by
 C. A. Hubbard - Pendleton, Ore. - (Yoakum Sta.)
 Surveyed - staked & platted - Mar. 25 - 1955 - By W. E. O. Criger.
 Scale: 1 in. = 400 Ft. Const. = 1 in. = 3672 a.

I, W. E. O. Criger of Pendleton, Oregon do hereby
 certify that this map was made from notes taken during
 an actual survey made by me on Mar. 25th 1955, and
 that the monument shown on this map, consists of
 a $\frac{3}{4}$ " iron pin 3' long and the top of which was left
 6" above the surface of the ground at the pump site
 and noted as follows: N. 70° 20' W. 1180 Ft., from
 the S. E. Cor. of Sec. 3, T. 2N., R. 30 E. W.M.
 Umatilla County, Oregon.



223
39
262

C. A. Hubbard.

6

06-134-Ax