

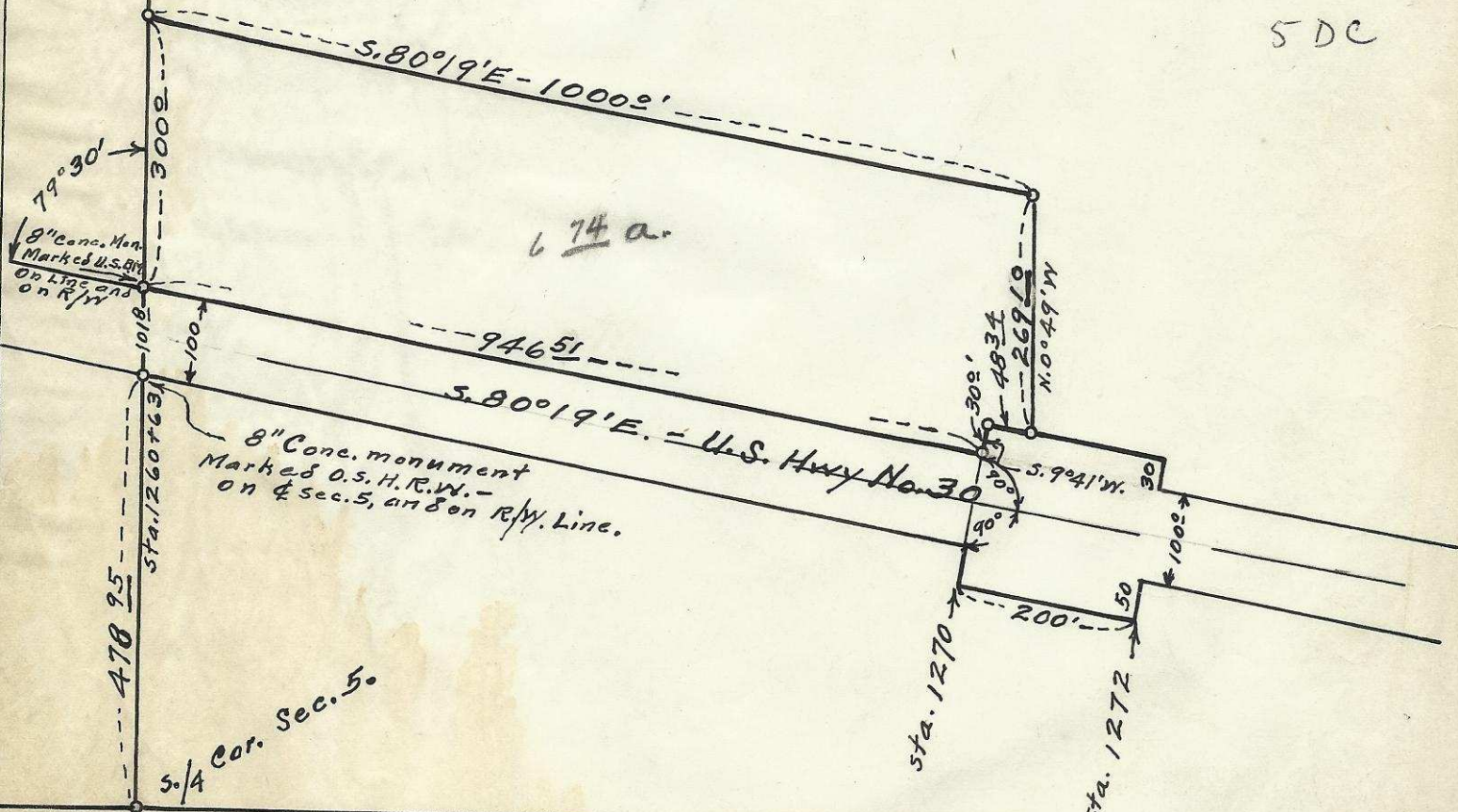
5.

N. 0° 49' W. N-S E Sec. 5.



Map of
Descriptive tract of land
located in S.E. 1/4 of Sec. 5,
T. 2 N., R. 32 E. W.M., North of
and adjacent to U.S. Hwy. 30
and west of Pendleton,
Umatilla County, Oregon.
Surveyed, staked and platted
April, 1950 - By W. E. O. Criger.
Scale: 1 inch = 200 Feet.

5 DC



06-153-Ax