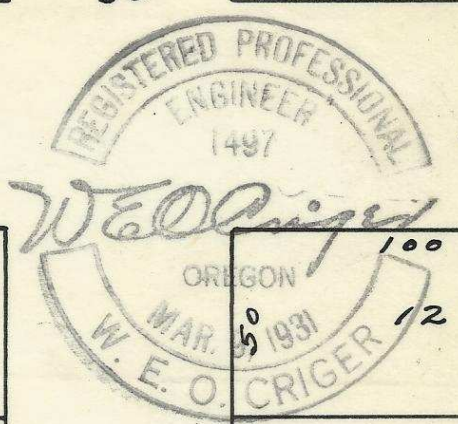
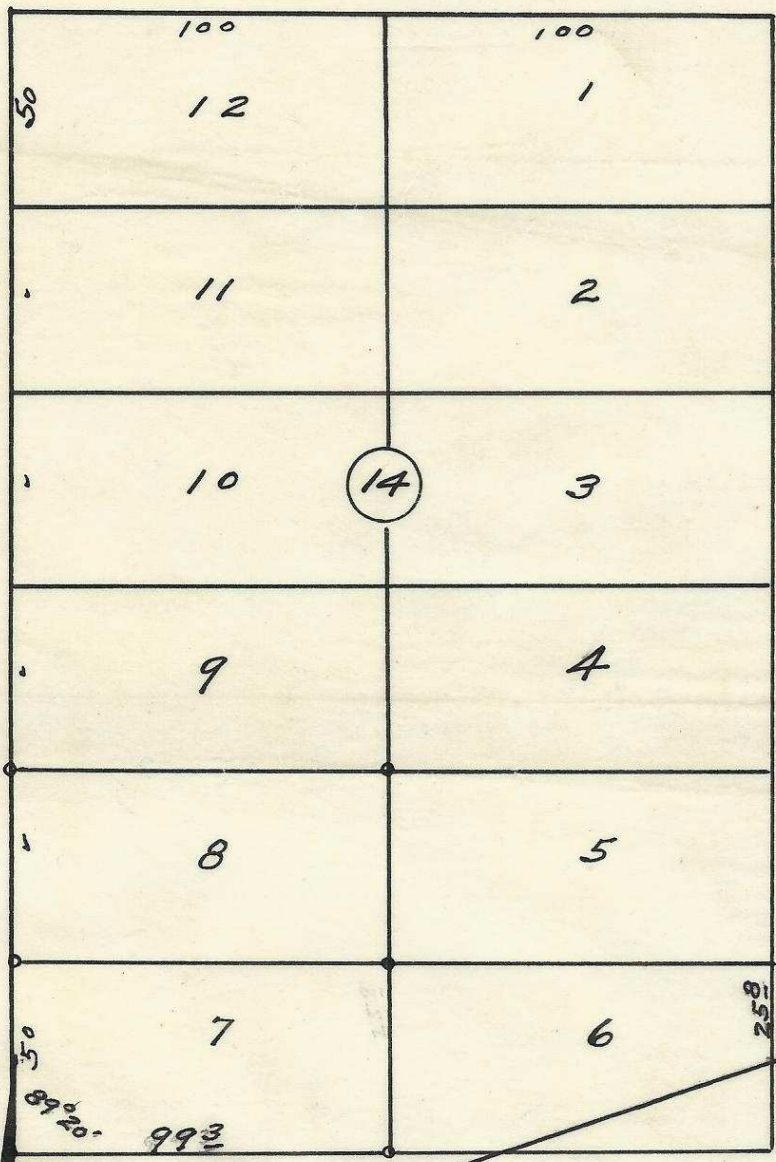


Carden
check this



N.W. 10th St.

N.W. 9th St.



2032 10 AB
Plat of Block 14 of Raley's
Addition to the town, now City of Pendleton,
Oregon. Surveyed, staked, & platted, Mar. 1931
By - W. E. O. Criger. -

06-162-Ax

Scale: 1 inch = 50 Feet.

Ira Perkins - John Nerschl.