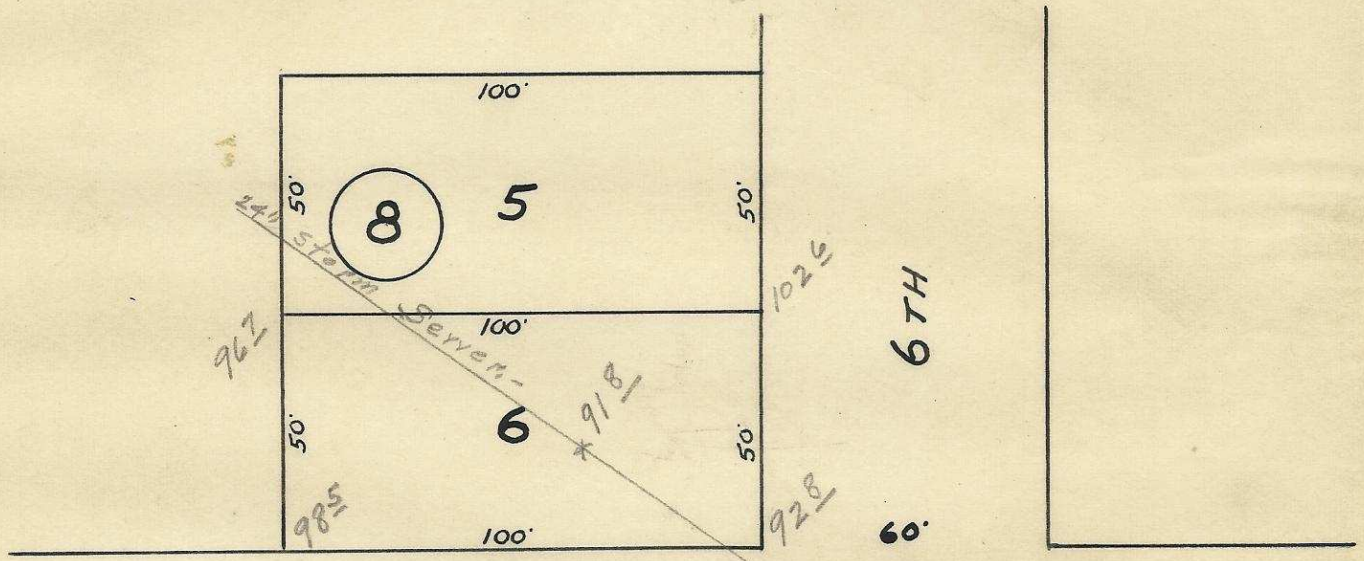


PLAT OF
 LOT 6 BLOCK 8
 LIVERMORES
 ADDITIONS TO THE
 CITY OF PENDLETON
 SURVEYED, STAKED
 AND PLOTTED SEPT. 1948
 SCALE 1" = 40'
 BY W.E. O. CRIGER



4 Square Gospel,



ELLIS

AVE.

6TH

60'

N.W.

2N32 3DC

06-185-Ax