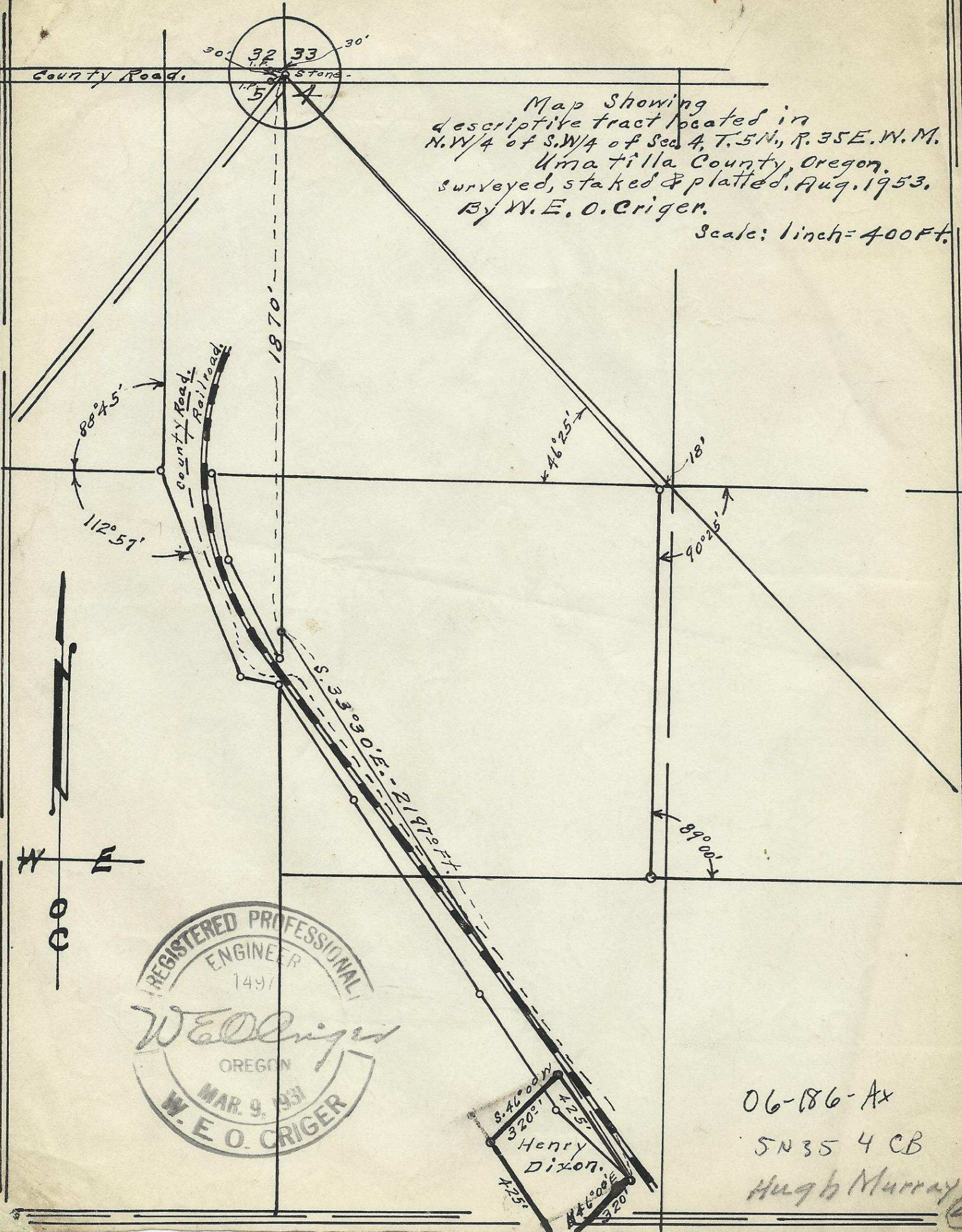


Map Showing  
 descriptive tract located in  
 N.W. 1/4 of S.W. 1/4 of Sec. 4, T. 5N., R. 35E., W. M.  
 Umatilla County, Oregon.  
 surveyed, staked & platted, Aug. 1953.  
 By W. E. O. Criger.

Scale: 1 inch = 400 ft.



06-186-Ax  
 5N35 4 CB  
 Hugh Murray