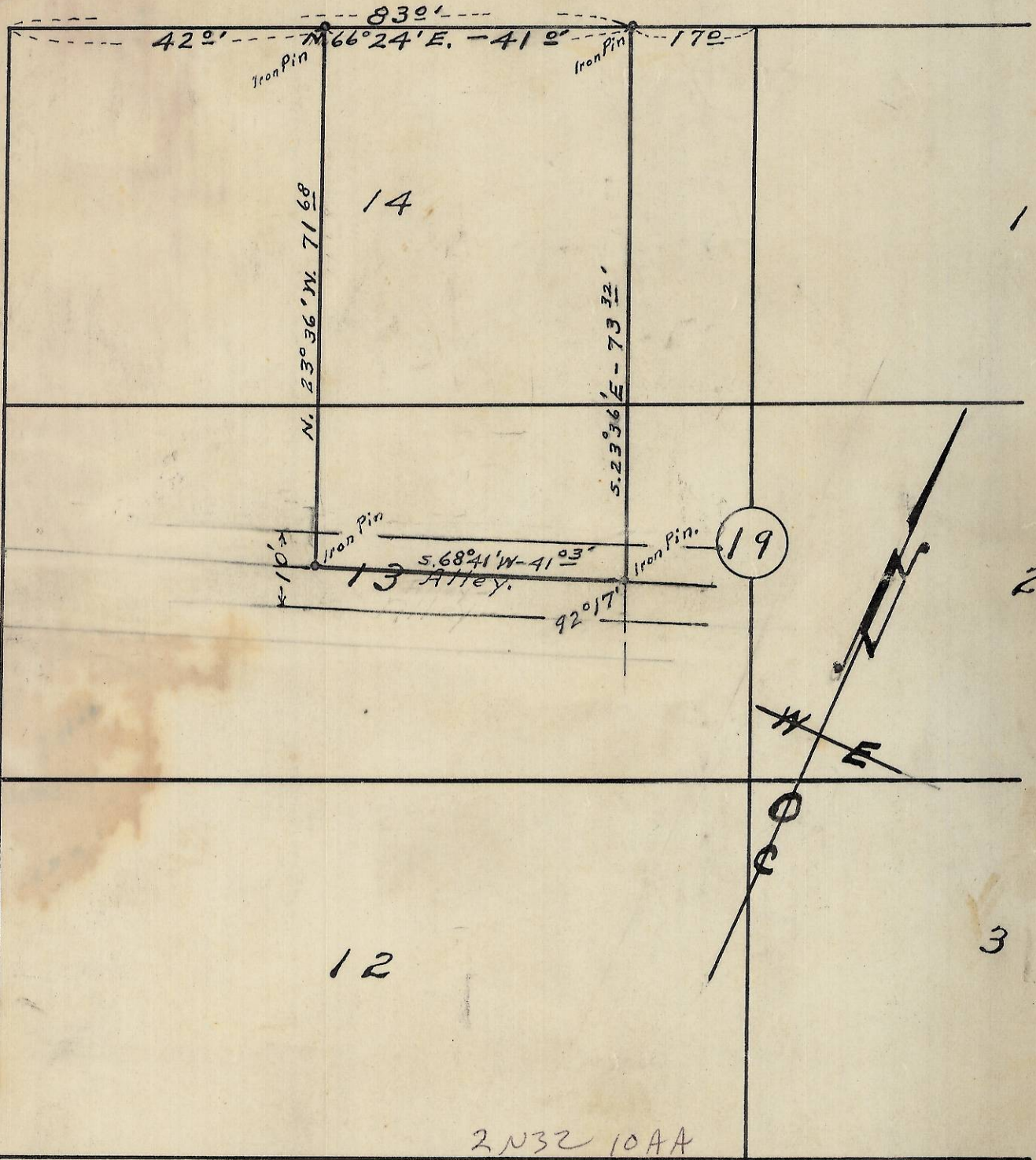


S.W. COURT AVE.

S.W. 4<sup>th</sup> St.

S. 23° 36' E



2N32 10AA

Plat of  
 Portion of Block 19 of Arnold & Raley's  
 Addition to the town, now  
 City of Pendleton, Oregon.

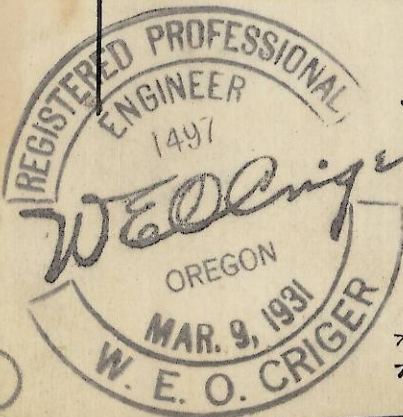
Surveyed, staked and platted - Dec. 1952

By W. E. O. Criger

06-261-AX

Scale: 1 inch = 20 Feet.

Note: the above shown alley was never dedicated,  
 to public - never vacated, now is deeded out in piecemeal  
 tracts and occupied by buildings; - therefore, it does not exist.



6