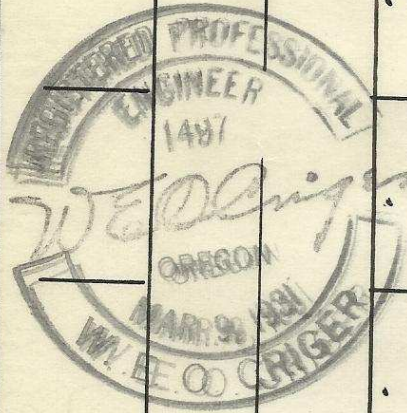
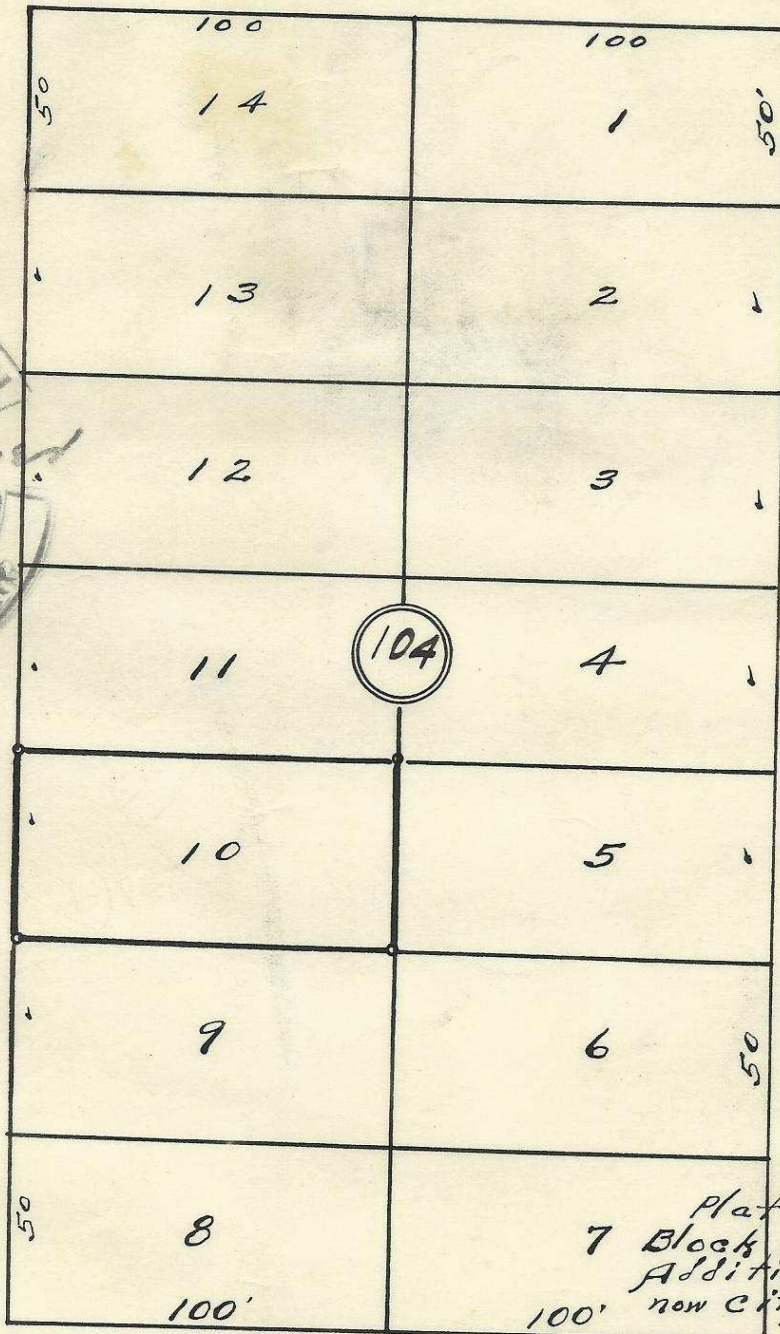


S.W. Frazier Ave



S.W. 13th St

S.W. 12th St

S.W. Goodwin Ave

Plat showing
 7 Block 104 of Reservation
 Addition to the town,
 now City of Pendleton, Ore.

Surveyed, staked & platted
 Dec-1952 By W.E.O. Criger

Scale: 1" = 50'

2N 32 10 DB

06-267-Ax