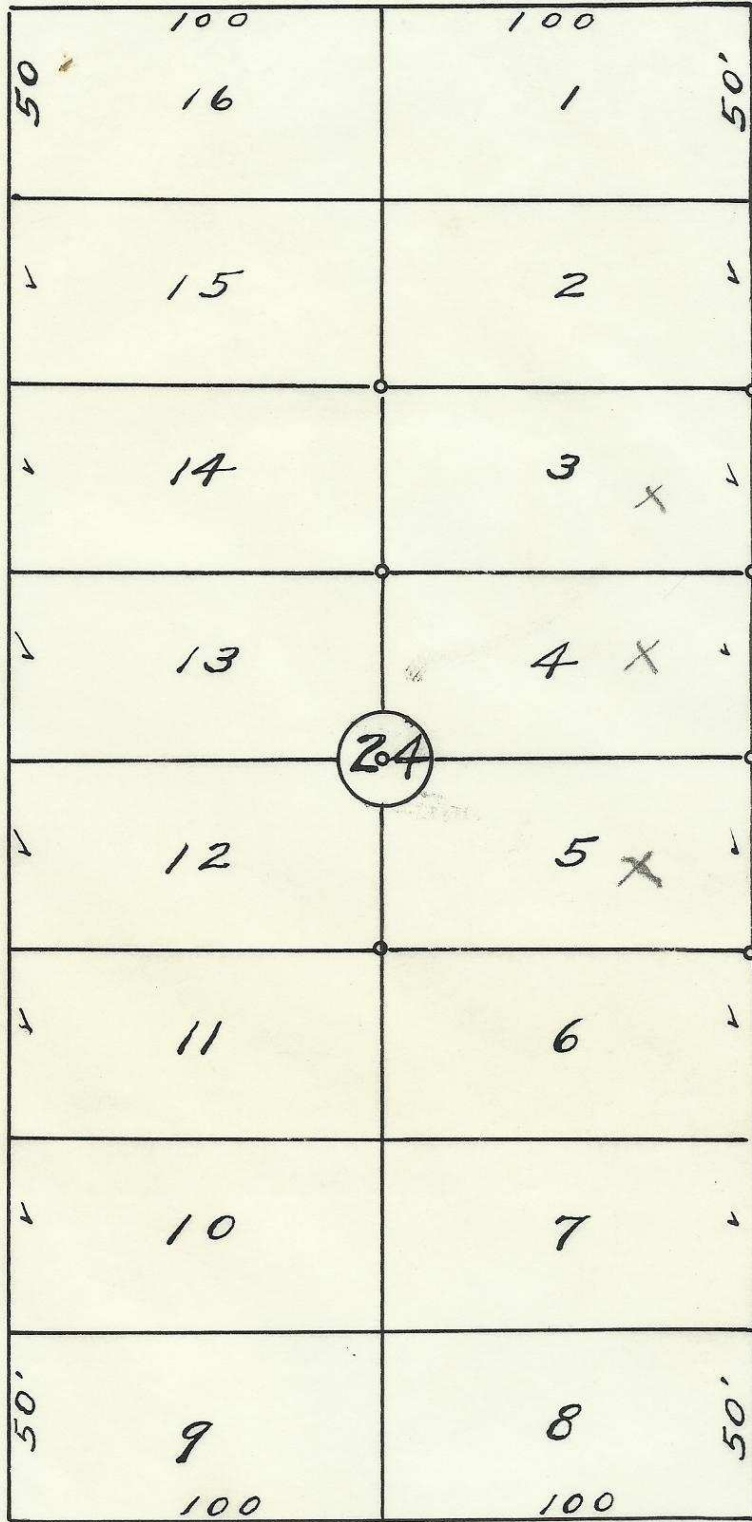
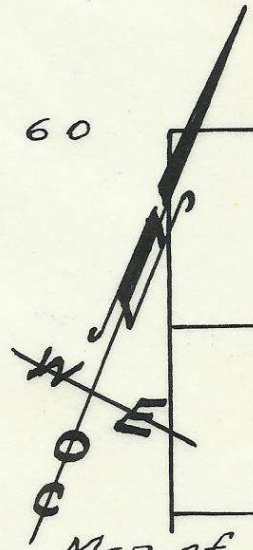


S.W. COURT AVE

60



60



Map of
Block 24 of
Arnold and Raley's Add.
to the town, now City
of Pendleton, Oregon.
Surveyed, staked & platted
June 1956.
By W. E. O. Criger.
Scale: 1" = 50'

S.W. 9th St.

S.W. 8th St.

60

60

S.W. DORION AVE.

2N32-10AC

06-268-Ax

(4)

Fletcher.-